

# Notices for the week beginning:

**Sunday 8th February 2015**

Please ask if you would like to know any more about the events listed on this page.

**Coming up.....**

**Monday 16 February**

Schools half term week.

**Tuesday 17**

2.00pm Coach House Tea at the Rectory.

**Wednesday 18**

7.30pm Ash Wednesday service in church.

**Friday 20**

Work being carried out on trees in the churchyard.

**Monday 23 — Wednesday 25.**

Work continues on the trees in the churchyard

**Tuesday 24**

2.30pm Tuesday Tea in church.

7.30pm Lent course begins.

**Thursday 26**

10.30am Holy Communion in church

**Saturday 28**

9.30am Walking group meet for a walk at Blakedown and Yielding Tree.

**Monday 2nd March**

10.00am Open The Book Team visit Old Swinford Primary School

7.30pm Standing Committee Meeting.

**Tuesday 3**

7.30pm Second Lent Course

Meeting.

**Saturday 7**

Marriage preparation day in the Coach House.



We have a Facebook page. If you're a Facebook user and want to keep up to speed with events at St Mary's visit [www.facebook.com/StMarysChurchOldswinford](http://www.facebook.com/StMarysChurchOldswinford).

There are still some 2015 diaries available at the back of church. These are supplied to us at no cost. Please help yourself.

Our Lent Course this year will follow a short course developed by the Mission Development Officers for Worcester Diocese. The course reflects on the Church's engagement with society and how our Christian faith might inform our citizenship. The course has been designed to challenge our thinking prior to the General Election in May. The sessions will be held on Tuesday evenings as follows:

24/2—A Good Life?

3/3—A Good Society?

10/3—A Good Nation?

17/3—A Good Creation?

24/3—A Good Citizen?

There are further details about this in The February edition of our Parish Magazine.



Despite popular demand, it's back again - the show that's had more comebacks than Phel!

# Raise the Roof! 6

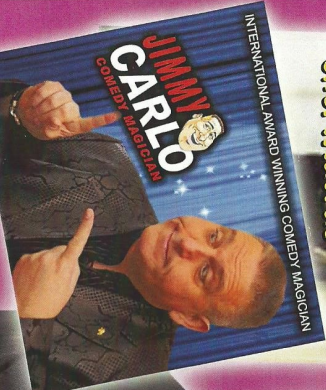
**Charity Cabaret Night** In aid of Hill Wheeler School, Kenya

Chadsgrove School & Specialist Sports College  
Meadow Road, Catsmill, Bromsgrove B61 0JL

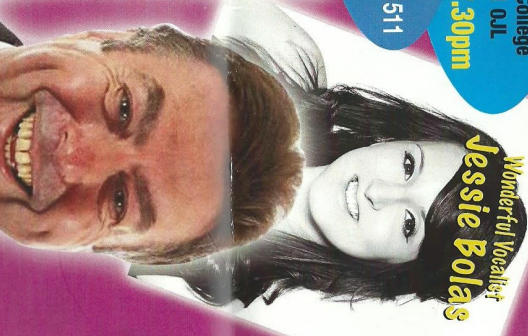
**TUESDAY 24th March 2015 at 7.30pm**

Tickets £10 available from the office at  
Chadsgrove School (Jackie) 01527 871511  
or from Jan Dew 01384 371397

From 'The Fortunes'  
**Shel Macrae**



Wonderful Vocalist  
**Jessie Bolas**



Hilarious comic  
**Rod Beech**

Host & Emcee  
**Chris King**



[www.thehillwheelercharity.com](http://www.thehillwheelercharity.com)  
Refreshments - Bring your own Wine & Beer. Snacks will be provided  
Sponsored by C. BEECH Steel Stockholders 01384 456654

Message from the Food Bank.....

Hi Everyone

We are busy, the food is going out as quickly as its coming in. The volunteers are working hard and we are very thankful for them. Please keep the donations going.

Shortages this week are:

- Tinned Meat
- Tinned Fruit

Thanks Everyone!