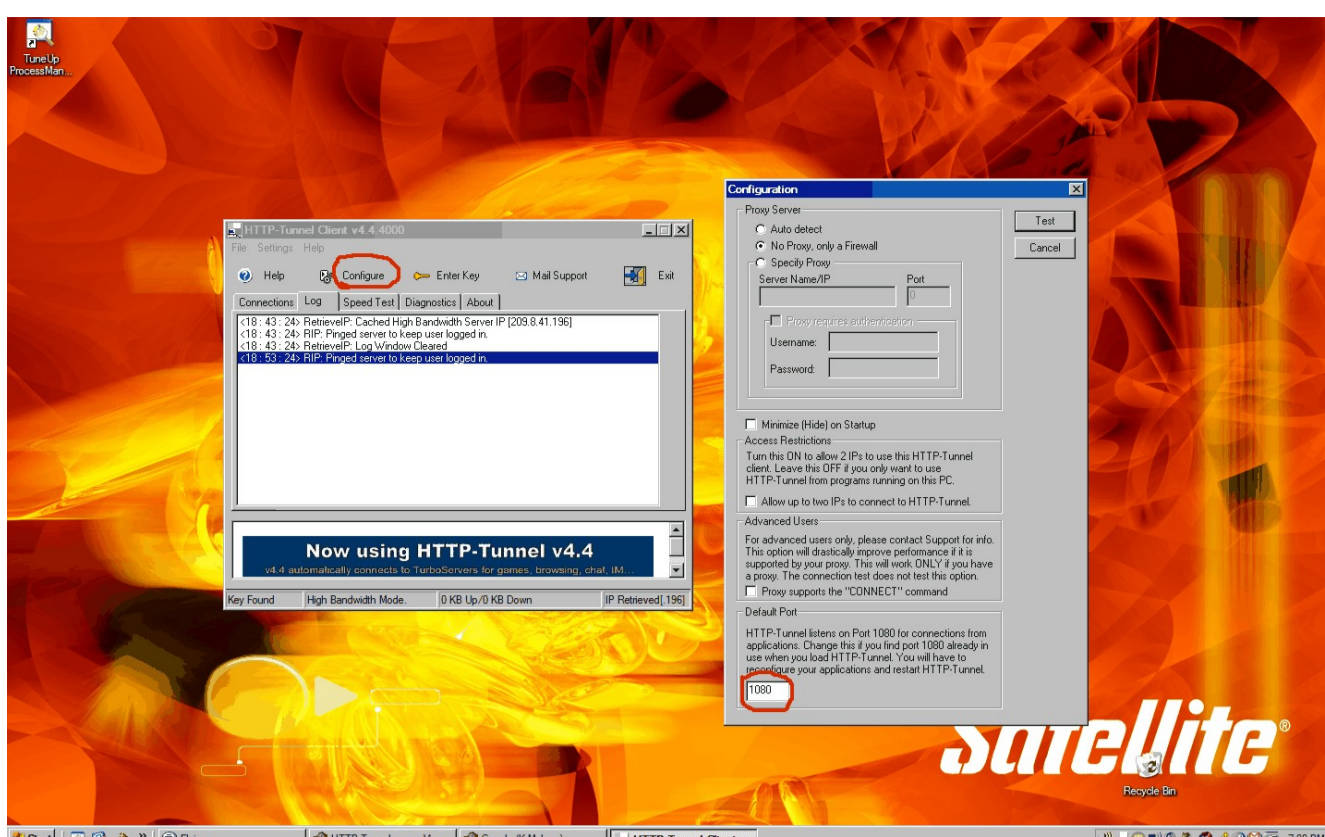


This guide will show you how to configure Eve on line to use Http-Tunnel.

Once you have Http-Tunnel installed, run the application, The main window will appear, choose the configure option. There you will be presented with three (3) options.

1. You can Select Auto detect if you want Http-Tunnel to detect your settings.
2. No Proxy, only a firewall if this is appropriate.
3. Specify Proxy, Here you will enter the IP address and Port number of the proxy that you use.

Complete 1 of the 3 options, then click test, the client will bind to port 1080 and localhost by default and connect to the tunnel servers if your settings are correct.



Eve On Line is not natively configurable to use a proxy (HTTP Tunnel) like Internet Explorer is. So you will need, what some refer to as, a Socksifying Agents. Socksifying Agents can provide limited support for applications not natively configurable to use a proxy. I tried various Socksifying Agents but only SocksCap would get it to work for me. You may have better luck than me with others available. 2 of the most popular commercial ones are ProxyCap and Proxifier. Each come with a 30 day free trial and run about \$30. A good free 1 you may want to try is Hummingbird.

For our purposes, I will be using SocksCap in this example. If you can not find a copy of SocksCap contact support and we may be able to help you. Follow the screen-shots below to configure SocksCap for Eve On line. Run SocksCap. Right Click SocksCap in the systems tray. Select settings. From the SocksCap control Panel>Choose File, scroll to Settings and Click then fill in the fields according to the screen-shot on the right then click OK. Now Click: New>Browse> Then Navigate to the Eve.exe file. Click: Open> OK and then Run Eve by Clicking the Run button in SockCap. Do not try to run Eve by Clicking the desktop icon. It must be started via the Run button in SocksCap.

