

Eva



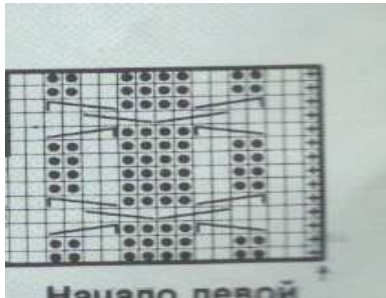
Materials: 6 skeins (50 g =130 m)

Knitting tension: 28 sts x 30 rows on needles size 3mm in M3. = 10 x 10 cm.

Back piece:

Cast on 101 sts, knit 1/1 ribs for 4 rows, then continue in M2. When the work measures 31 cm cast off 3 sts at each end of the row, then dec for raglan *every 4th row: 1sts 1 time and every 2th row 1 sts 3 times*, repeat from * to * until work measures 18 sm from the beginning of raglan shape. Cast off all the sts.

M1



M3

1 row: *K1, P1* rep. from * to *
2 row: *K1, P1* rep. from * to *
3 row: *knit the stitch in the previous row, P1* rep. from * to *
4 row: *K1, P1* rep. from * to *
Rep. rows 3,4

Right front piece:

Cast on 63 sts, knit 1/1 ribs for 4 rows, then 1 edge st., 3 st.in M3, 16 st in M1, 4 st in M3 then in M2, 1 edge st. When piece measures 31 cm inc. at the side as described for back piece repeating from * to * 4 times. When piece measures 38 cm bind off the center 21 sts for neck. Bind off at right edge every other row 4 st. until there's no stitches left.

Left front piece:

Like right front piece, but mirrored.

Sleeve:

Cast on 70 sts, knit 1/1 ribs for 4 rows, continue in M2. At the same time bind off 3 sts at each side, then dec. for the raglan shaping for one side as for back piece instruction and for the other as for the front piece. When raglan shaping for the front piece is complete bind off every other row 4 sts 5 times.

Turtleneck:

Cast on 31 sts, knit in M3. make the button holes in 6th row, knit turtleneck long enough to all neckline.

Assembly: Sew side- raglan and turtleneck seams.

M2



/ - 2-st RC
\ - 2-st LC
| - P