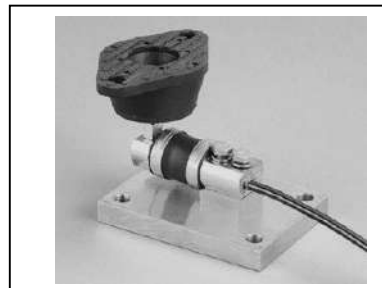
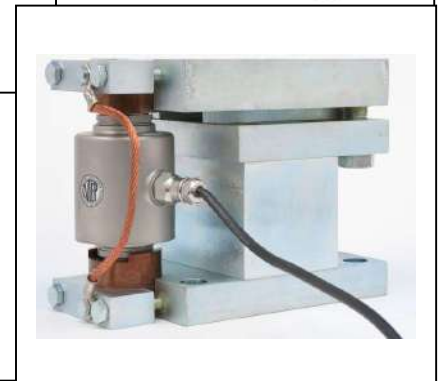


Weighing Assemblies

Distributor Reference Guide

New OmniMount Pro for
NTEP applications



Important note:
Fairbanks product information located at the
Nexus platform are updated more
frequently and are the best source for
current product information.




Contents

Fairbanks OmniCell (Weighing Assembly) Lineup.....	3
9101FB Specs & Notes.....	4
9101FB Pricing.....	5
9102FB Specs & Notes.....	6
FB9102FB Pricing.....	7
9104FB Specs & Notes.....	8
9104FB Pricing.....	9
9106FB Specs & Notes.....	11
9106FB Pricing.....	12
9109	13
9120	14
6/8/10 Cell & Enclosure Options:	14
Fairbanks Omnicell Overview	15
Omnicell Placement Diagram	16
OmniMount Pro	17
OmniMount Pro Pricing.....	19
OmniMount Pro Specs.....	19

The prices and product information in this catalog are for reference only. Please check the Fairbanks Nexus online catalog system for the most up to date information.




Fairbanks OmniCell (Weighing Assembly) Lineup


Fairbanks Omnicell	Model	Type	Applications:	Features:	Capacity (lbs)
	9101FB	SESB (Single Ended Shear Beam)	Light Vessels Conveyors Vibratory Feeders	Vibration suppression mount	100 to 2,500
	9102FB		Small Tanks In-motion Process Reactors	Articulating mount Integral height adjustment	1,000 to 10,000
	9106FB		Biomedical Reactors General Washdown	Stainless welded load cell, articulating mount	1,000 to 10,000

Weighing Assemblies

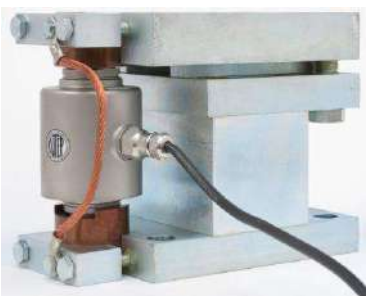
9104FB Series Weighing Assembly

	Model	9104FB	All models include a stainless-steel load cell with hermetically sealed welded covers for superior environmental protection and years of reliable and accurate performance. <ul style="list-style-type: none"> • 100% self-checking (uplift & sideload protection) • Design counteracts the adverse effects of most blending applications • Mounts directly to the floor or other structural support • High load cell output is perfect for high dead-load and low live-load applications • Custom capacities & cable lengths available
	Description	This Omnicell comes in your choice of mild steel, stainless steel or hybrid construction and is designed to provide years of reliable and accurate performance.	
	Capacities & Sizes	1,000 – 75,000 lbs	
	Target Applications	An easy choice for a general tank weighing need. Tanks, Conveyors, Bins, Hoppers, Non-skirted Silos, Batching vessels & Inventory Monitoring	


9109 Series Weighing Assembly

9109	Model		The 9109 Omnicell has a double-ended design suitable for applications requiring high accuracy and extreme environmental protection. <ul style="list-style-type: none"> • Stainless steel, hermetically sealed load cell and both a zinc plated machined steel or machined stainless-steel mounting assembly. • Neutral Axis Load Introduction and infinitely adjustable Omnimount checking system. • Load cells are 17-4 PH stainless steel with true hermetic seals at gauging and cable entry areas • Compact design (40% smaller than competition) • NTEP & FM approved
Fairbanks' Omnicell 9109 Series double-ended shear beam weighing assembly is unmatched in adjustability by changing the orientation of only a few components.	Description		
1,000 – 50,000 lbs	Capacities & Sizes		
Tanks-recipes Hoppers-agriculture Reactors-chemical Silos, Agitated conditions & Existing site conversions	Target Applications		

9120 Series Weighing Assembly

	Model	9120	They use the proven rocker column load cell and a rugged mild steel mounting assembly. <ul style="list-style-type: none"> • Self-checking design • High-grade stainless-steel load cell const. • Rocker column load cells ensure accurate, repeatable loads • Hermetically sealed load cells • Mild steel mounting assemblies • Stainless steel mounts available through Fairbanks Solutions Group • Easy mount installation, weld or via fasteners
	Description	The 9120 Series Omnicells are for vessels with mid-range to extremely high capacities. The durability and ease of installation of these weighing assemblies are unparalleled.	
	Capacities & Sizes	7 ½ - 100 ton	
	Target Applications	Medium to ultra-heavy capacity weighing	

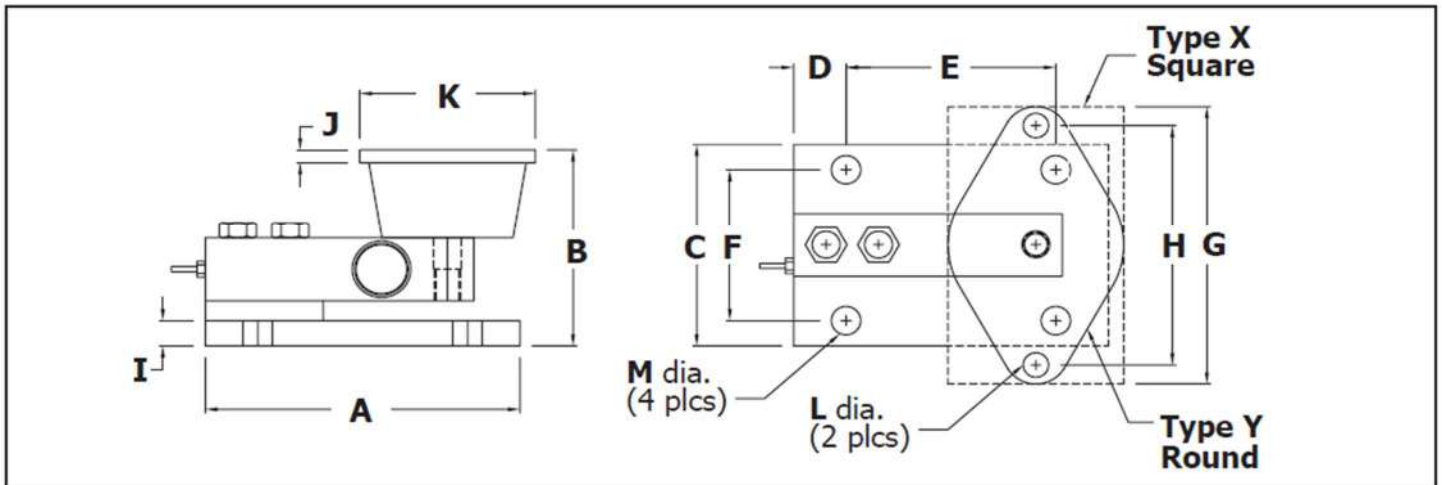
9101FB Specs & Notes

	Specifications:			
	Full Scale Output (FSO)	3.0 mV/V \pm 0.25%	Excitation Voltage	10 volts DC (15 maximum)
Accuracy Class (NTEP only)	Class III/IIIL	Safe Overload	150%	
Combined Error (FSO)	< 0.03%	Ultimate Overload	300%	
Non-linearity (FSO)	< 0.03%	Bridge Resistance	350 Ω Nominal	
Hysteresis (FSO)	< 0.02%	Sealing	IP67	
Creep (20 minutes)	< 0.03%	Load Cell Cable	20' polyurethane cable	
Compensated Temperature	14°F to 104°F (-10°C to 40°C)	Mount Construction	Neoprene rubber top mount; Stainless Steel base plate	
Operating Temperature	0°F to 150°F (-18°C to 65°C)			

Notes:

- **9101 FB Series:** A compact, mini tank weighing assembly, utilizing a single-ended beam load cell.
- **Features of the 9101 FB Series:** Neoprene shock mount, self-checking, semi-floating load plate designed for applications in the low weight range (100 lbs to 2500 lbs). Suitable for tanks, bins, and hoppers. Factory Mutual System approved.
- Stainless steel load cell, 100-250 lbs
- Nickel-plated alloy tool steel load cell, 500-2,500 lbs supplied with 20' of load cell cable.
- Mounting hardware is stainless steel.
- **Kits include:** Three or four Omnicells, NEMA 4X rated stainless steel analog junction box, and 25' of six-conductor interface cable.
- Analog J-box and accessories: See Omnicell Accessories page.
- Contact Product Manager for application questions and product modifications.
- FM Approval on capacities 500 lbs and above.

RATED CAPACITY	DIMENSIONS All measurements in inches													
	A	B	C	D	E	F	G	H	I	J	K	L	M	TYPE
100-250 lbs	4.00	3.13	3.00	0.37	3.25	2.25	3.88	3.00	0.50	0.22	2.38	0.38	0.34	Y
500 lb	6.00	3.88	4.00	1.00	4.00	3.00	5.50	4.13	0.50	0.25	3.38	0.56	0.47	Y
1k	6.00	4.00	4.00	1.00	4.00	3.00	5.13	4.13	0.50	0.13	3.00	0.44	0.47	X
2.5k	6.00	4.00	4.00	1.00	4.00	3.00	6.25	5.00	0.50	0.38	4.62	0.44	0.47	X



9101FB Pricing

9101FB OmniCells

	Product #	Description	Load Cell Construction	NTEP	FM		Capacity	Weight	List Price
					Approved				
Single Mounts	27873	9101FB OMC 100LB CAP STAINLESS	Nickle Plated Tool Steel	No	No		100 lb	5 lbs.	\$584.00
	27874	9101FB OMC 150LB CAP STAINLESS	Nickle Plated Tool Steel	No	No		150 lb	5 lbs.	\$619.00
	27875	9101FB OMC 250LB CAP STAINLESS	Nickle Plated Tool Steel	No	No		250 lb	5 lbs.	\$619.00
	27876	9101FB OMC 500 LB CAP HYBRID	Stainless Steel	Yes	Yes		1000 lb	9 lbs.	\$739.00
	27877	9101FB OMC 1000 LB CAP HYBRID	Stainless Steel	Yes	Yes		1000 lb	9 lbs.	\$739.00
	27878	9101FB OMC 2500 LB CAP HYBRID	Stainless Steel	Yes	Yes		2500 lb	9 lbs.	\$739.00

	Product #	Description	Load Cell Construction	NTEP	FM		Capacity	Weight	List Price
					Approved				
3 Mount Kits	97632	9101FB 3OMC KIT 100#CAP SS ANL	Nickle Plated Tool Steel	No	No		100 lb	22 lbs.	\$2,085.00
	97633	9101FB 3OMC KIT 150#CAP SS ANL	Nickle Plated Tool Steel	No	No		150 lb	22 lbs.	\$2,085.00
	97634	9101FB 3OMC KIT 250#CAP SS ANL	Nickle Plated Tool Steel	No	No		250 lb	22 lbs.	\$2,085.00
	97635	9101FB 3OMC KIT 500#CAP SS ANL	Stainless Steel	Yes	Yes		500 lb	22 lbs.	\$2,445.00
	97636	9101FB 3OMCKIT 1000#CAP SS ANL	Stainless Steel	Yes	Yes		1000 lb	35 lbs.	\$2,445.00
	97636	9101FB 3OMCKIT 1000#CAP SS ANL	Stainless Steel	Yes	Yes		1000 lb	35 lbs.	\$2,445.00

	Product #	Description	Load Cell Construction	NTEP	FM		Capacity	Weight	List Price
					Approved				
4 Mount Kits	97640	9101FB 4OMC KIT 100#CAP SS ANL	Nickle Plated Tool Steel	No	No		100 lb	27 lbs.	\$2,704.00
	97641	9101FB 4OMC KIT 150#CAP SS ANL	Nickle Plated Tool Steel	No	No		150 lb	27 lbs.	\$2,564.00
	97642	9101FB 4OMC KIT 250#CAP SS ANL	Nickle Plated Tool Steel	No	No		250 lb	27 lbs.	\$2,704.00
	97643	9101FB 4OMC KIT 500#CAP SS ANL	Stainless Steel	Yes	Yes		500 lb	27 lbs.	\$3,184.00
	97644	9101FB 4OMCKIT 1000#CAP SS ANL	Stainless Steel	Yes	Yes		1000 lb	43 lbs.	\$3,184.00
	97645	9101FB 4OMCKIT 2500#CAP SS ANL	Stainless Steel	Yes	Yes		2500 lb	43 lbs.	\$3,184.00

Each mounting kit comes with the following:


3 or 4 Omnicells (depending on which model is being purchased), ACC 1172 NEMA 4X rated stainless steel analog junction box (PN 67171M) and 25' of six-conductor cable

Compatible Accessories

Product #	Name/Description	Description	List Price
27999	OMNICELL LOAD CELL SUMMING	J-BOX, 6 CELLS, SS ENCLOSURE	\$375.00
28057	OMNICELL LOAD CELL SUMMING	J-BOX, 6 CELLS, FIBERGLASS	\$390.00
28058	OMNICELL LOAD CELL SUMMING	J-BOX, 8 CELLS, SS ENCLOSURE	\$438.00
28059	OMNICELL LOAD CELL SUMMING	J-BOX, 8 CELLS, FIBERGLASS ENC	\$448.00
28060	OMNICELL LOAD CELL SUMMING	J-BOX, 10 CELLS, STAINLESS ENC	\$607.00
32420	SUMMING JUNCTION BOX,4-CELL	FIBERGLASS, EXPANDABLE, NEMA 4X	\$269.00
32421	SUMMING JUNCTION BOX,SS 4-CELL	EXPANDABLE, NEMA 4X	\$248.00
67171M	ACC 1172 NEMA 4X RATED STAINLESS STEEL ANALOG JUNCTION BOX WITH FM LABEL		\$202.00



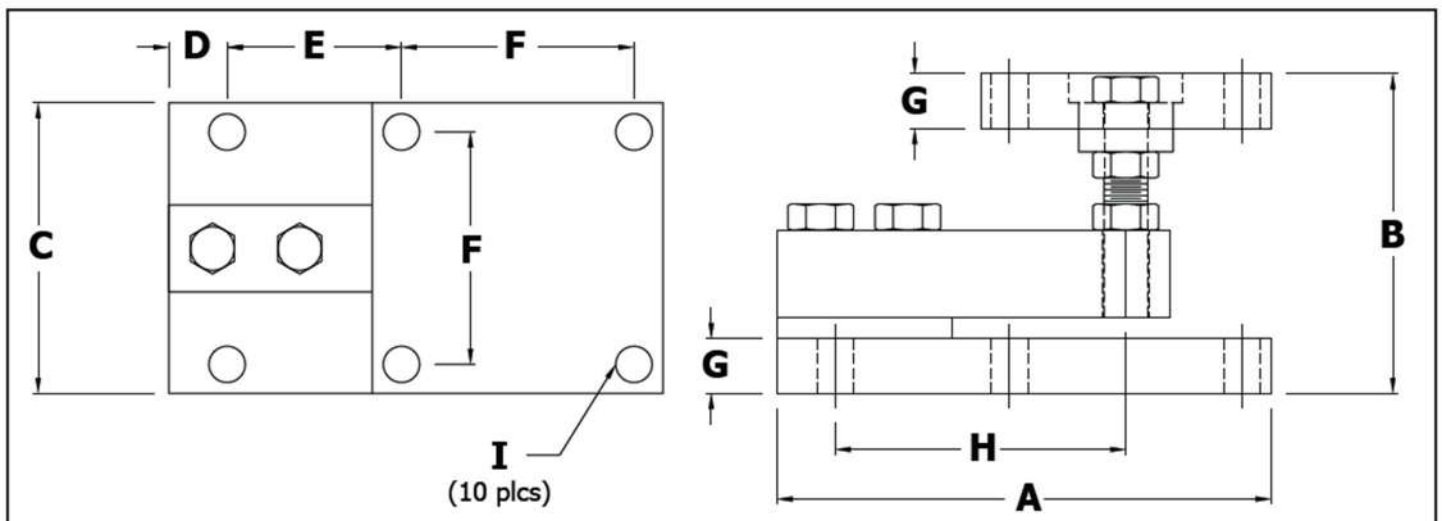
9102FB Specs & Notes

	Specifications:			
	Full Scale Output (FSO)	3.0 mV/V \pm 0.25%	Excitation Voltage	10 volts DC (15 maximum)
Accuracy Class	Class III/IIIL	Safe Overload	150%	
Combined Error (FSO)	< 0.03%	Ultimate Overload	300%	
Non-linearity (FSO)	< 0.03%	Bridge Resistance	350 Ω Nominal	
Hysteresis (FSO)	< 0.02%	Sealing	IP66	
Creep (20 minutes)	< 0.03%	Load Cell Cable	20' polyurethane cable	
Compensated Temperature	14°F to 104°F (-10°C to 40°C)	Load Cell Construction	Stainless Steel potted	
Operating Temperature	0°F to 150°F (-18°C to 65°C)	Mount Construction	Stainless Steel	
NTEP	YES	FM Approved	YES	

Notes:

- **9102 FB Series:** A compact weighing assembly, designed for superior performance in the medium-to-high weight ranges not requiring extreme hostile protection.
- **Features of the 9102 FB Series:** Integral height adjustment, articulating load interface and thermal expansion provisions. Designed for tanks, hoppers, blending, and mixing.
- Supplied with 20' of shielded load cell cable and stainless steel potted load cell and stainless steel mounting hardware.
- **Kits include:** Three or four Omnicells, NEMA 4X rated stainless steel analog junction box, and 25' of six-conductor interface cable.
- Analog J-box and accessories: See Omnicell Accessories page.
- Contact Product Manager for application questions and product modifications.
- 5,000 pound capacity dimensions have changed from earlier versions of the 9102 Series.

RATED CAPACITY	DIMENSIONS All dimensions in inches								
	A	B	C	D	E	F	G	H	I
1,000 — 5,000 lb	7.12	4.00-4.50	5.00	0.56	2.00	4.00	0.70	4.00	0.63
10,000 lb	8.50	5.00-5.50	5.00	0.75	3.00	4.00	0.94	5.00	0.69



9102FB OmniCells

	Product #	Description	Load Cell Construction	NTEP	FM Approved	Capacity	Weight	List Price
	Single Mounts	27881	9102FB 1000 LB CAP OMC STAINLESS	Stainless Steel Potted	Yes	Yes	1000 lb	17 lbs.
27882		9102FB 1500 LB CAP OMC STAINLESS	Stainless Steel Potted	Yes	Yes	1500 lb	17 lbs.	\$713.00
27883		9102FB 2500 LB CAP OMC STAINLESS	Stainless Steel Potted	Yes	Yes	2500 lb	17 lbs.	\$713.00
27884		9102FB 5000 LB CAP OMC STAINLESS	Stainless Steel Potted	Yes	Yes	5000 lb	47 lbs.	\$713.00
27885		9102FB 10,000 LB CAP OMC STAINLESS	Stainless Steel Potted	Yes	Yes	10000 lb	47 lbs.	\$1,014.00

	Product #	Description	Load Cell Construction	NTEP	FM Approved	Capacity	Weight	List Price
	3 Mount Kits	97653	9102FB 3-OMC KIT/1000#/SS/ANL	Stainless Steel Potted	Yes	Yes	1000 lb	58 lbs.
97654		9102FB 3-OMC KIT/1500#/SS/ANL	Stainless Steel Potted	Yes	Yes	1500 lb	58 lbs.	\$2,367.00
97655		9102FB 3-OMC KIT 2500#/SS/ANL	Stainless Steel Potted	Yes	Yes	2500 lb	58 lbs.	\$2,367.00
97656		9102FB 3-OMC KIT 5000#/SS/ANL	Stainless Steel Potted	Yes	Yes	5000 lb	148 lbs.	\$2,367.00
97657		9102FB 3-OMC KIT 10k#/SS/ANL	Stainless Steel Potted	Yes	Yes	10000 lb	148 lbs.	\$3,270.00

	Product #	Description	Load Cell Construction	NTEP	FM Approved	Capacity	Weight	List Price
	4 Mount Kits	97660	9102FB 4-OMC KIT/1000#/SS/ANL	Stainless Steel Potted	Yes	Yes	1000 lb	75 lbs.
97661		9102FB 4-OMC KIT/1500#/SS/ANL	Stainless Steel Potted	Yes	Yes	1500 lb	75 lbs.	\$3,080.00
97662		9102FB 4-OMC KIT 2500#/SS/ANL	Stainless Steel Potted	Yes	Yes	2500 lb	75 lbs.	\$3,080.00
97663		9102FB 4-OMC KIT 5000#/SS/ANL	Stainless Steel Potted	Yes	Yes	5000 lb	195 lbs.	\$3,080.00
97664		9102FB 4-OMC KIT 10k#/SS/ANL	Stainless Steel Potted	Yes	Yes	10000 lb	195 lbs.	\$4,284.00

Note: Mount Construction is stainless steel

Each mounting kit comes with the following:


3 or 4 Omnicells (depending on which model is being purchased), ACC 1172 NEMA 4X rated stainless steel analog junction box (PN 67171M) and 25' of six-conductor cable

Compatible Accessories

Product #	Name/Description	Description	List Price
27999	OMNICELL LOAD CELL SUMMING	J-BOX, 6 CELLS, SS ENCLOSURE	\$375.00
28057	OMNICELL LOAD CELL SUMMING	J-BOX, 6 CELLS, FIBERGLASS	\$390.00
28058	OMNICELL LOAD CELL SUMMING	J-BOX, 8 CELLS, SS ENCLOSURE	\$438.00
28059	OMNICELL LOAD CELL SUMMING	J-BOX, 8 CELLS, FIBERGLASS ENC	\$448.00
28060	OMNICELL LOAD CELL SUMMING	J-BOX, 10 CELLS, STAINLESS ENC	\$607.00
32420	SUMMING JUNCTION BOX,4-CELL	FIBERGLASS,EXPANDABLE,NEMA 4X	\$269.00
32421	SUMMING JUNCTION BOX,SS 4-CELL	EXPANDABLE, NEMA 4X	\$248.00
67171M	ACC 1172 NEMA 4X RATED STAINLESS STEEL ANALOG JUNCTION BOX WITH FM LABEL		\$202.00



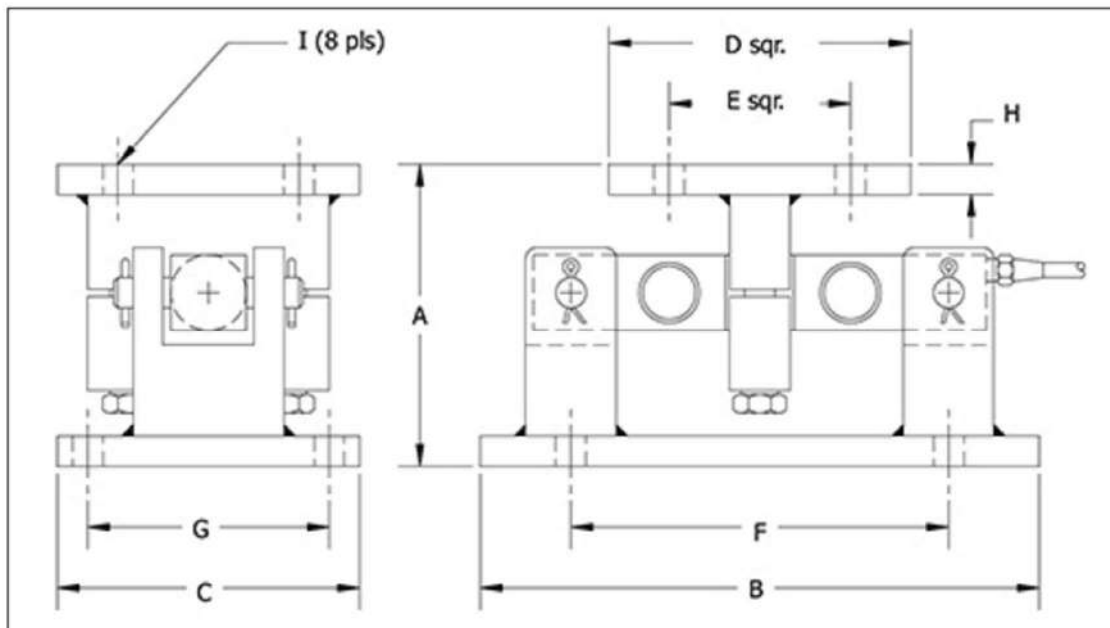
9104FB Specs & Notes

	Specifications:		
	Full scale output (FSO)		3.0m V/V ± 0.25%
	Combined error (FSO)		≤ 0.03%
	Non-linearity (FSO)		≤ 0.03%
	Hysteresis (FSO)		≤ 0.02%
	Creep (20 minutes)		≤ 0.03%
	Compensated temperature		14°F to 104°F (-10°C to 40°C)
	Operating temperature		14°F to 150°F (-10°C to 65°C)
	Excitation Voltage		10 volts DC (15 maximum)
	Safe Overload		150%
	Ultimate Overload		300%
	Bridge resistance		700 Ω nominal
	Sealing		Meets NEMA 6 and IP67 standards
	Load cell cable		20 feet polyurethane cable
	FM Approved		Yes

Notes:

- **9104 FB Series** — A sturdy fabricated tank weighing assembly that provides ultimate reliability in tank and hopper weighing applications.
- **Features of the 9104 FB Series** — Multi-directional checking and easy installation.
- **Stainless steel models** — 17-4ph stainless steel load cells and fabricated stainless steel mounting hardware.
- **Hybrid models** — 17-4ph stainless steel load cells and nickel-plated mild steel mounting hardware.
- **Analog models** — Alloy tool steel load cell and nickel-plated mild steel mounting hardware.
- **Analog Kits include** — Three or four Omnicells, NEMA 4X rated stainless steel analog junction box and 25 feet of six conductor interface cable.
- **NTEP** — Mild steel load cells, 25k to 75k capacities
- For J-box, see Omnicell Accessories page.
- Contact Omnicell Product Manager for cable variations.
- Contact Omnicell Product Manager for application questions and product modifications.

DIMENSIONS									
All dimensions in inches									
Capacity	A	B	C	D	E	F	G	H	I
1000 — 5000 lbs	5.00	9.25	5.00	4.00	2.75	6.25	3.75	0.50	0.56
10,000 — 35,000 lbs	7.90	12.00	8.00	8.00	6.00	7.50	6.00	0.75	0.81
50,000 — 75,000 lbs	9.30	16.25	12.00	9.00	6.50	11.5	9.50	1.00	0.81



9104FB OmniCells

Product #	Description	Load Cell Construction	Mount Construction	NTEP	Capacity	Weight	List Price
32954	9104FB OMNICELL 1K TOOL STEEL	Alloy Tool Steel	Nickel-plated mild steel	No	1000 lb	25 lbs.	\$807.00
32955	9104FB OMNICELL 2.5K TOOLSTEEL	Alloy Tool Steel	Nickel-plated mild steel	No	2500 lb	25 lbs.	\$807.00
32956	9104FB OMNICELL 5K TOOL STEEL	Alloy Tool Steel	Nickel-plated mild steel	No	5000 lb	25 lbs.	\$807.00
32957	9104FB OMNICELL 10K TOOL STEEL	Alloy Tool Steel	Nickel-plated mild steel	No	10000 lb	77 lbs.	\$1,086.00
32958	9104FB OMNICELL 15K TOOL STEEL	Alloy Tool Steel	Nickel-plated mild steel	No	15000 lb	77 lbs.	\$1,086.00
32959	9104FB OMNICELL 25K TOOLSTEEL	Alloy Tool Steel	Nickel-plated mild steel	Yes	25000 lb	77 lbs.	\$1,086.00
32960	9104FB OMNICELL 35K TOOLSTEEL	Alloy Tool Steel	Nickel-plated mild steel	Yes	35000 lb	77 lbs.	\$1,738.00
32961	9104FB OMNICELL 50K TOOL STEEL	Alloy Tool Steel	Nickel-plated mild steel	Yes	50000 lb	169 lbs.	\$2,234.00
33001	9104FB OMNICELL 75K TOOL STEEL	Alloy Tool Steel	Nickel-plated mild steel	Yes	75000 lb	169 lbs.	\$2,234.00
32971	9104FB OMNICELL 1K HYBRID	Stainless Steel	Nickel-plated mild steel	No	1000 lb	25 lbs.	\$845.00
32972	9104FB OMNICELL 2.5K HYBRID	Stainless Steel	Nickel-plated mild steel	No	2500 lb	25 lbs.	\$845.00
32973	9104FB OMNICELL, 5K HYBRID	Stainless Steel	Nickel-plated mild steel	No	5000 lb	25 lbs.	\$845.00
32974	9104FB OMNICELL 10K HYBRID	Stainless Steel	Nickel-plated mild steel	No	10000 lb	77 lbs.	\$1,120.00
32975	9104FB OMNICELL 15K HYBRID	Stainless Steel	Nickel-plated mild steel	No	15000 lb	77 lbs.	\$1,120.00
32976	9104FB OMNICELL 25K HYBRID	Stainless Steel	Nickel-plated mild steel	No	25000 lb	77 lbs.	\$1,120.00
32977	9104FB OMNICELL 35K HYBRID	Stainless Steel	Nickel-plated mild steel	No	35000 lb	77 lbs.	\$2,005.00
32978	9104FB OMNICELL 50K HYBRID	Stainless Steel	Nickel-plated mild steel	No	50000 lb	169 lbs.	\$2,630.00
32979	9104FB OMNICELL 75K HYBRID	Stainless Steel	Nickel-plated mild steel	No	75000 lb	169 lbs.	\$2,630.00
32962	9104FB OMNICELL 1K STAINLESS	Stainless Steel	Stainless Steel	No	1000 lb	25 lbs.	\$1,354.00
32963	9104FB OMNICELL 2.5K STAINLESS	Stainless Steel	Stainless Steel	No	2500 lb	25 lbs.	\$1,354.00
32964	9104FB OMNICELL 5K STAINLESS	Stainless Steel	Stainless Steel	No	5000 lb	25 lbs.	\$1,354.00
32965	9104FB OMNICELL 10K STAINLESS	Stainless Steel	Stainless Steel	No	10000 lb	77 lbs.	\$2,067.00
32966	9104FB OMNICELL 15K STAINLESS	Stainless Steel	Stainless Steel	No	15000 lb	77 lbs.	\$2,067.00
32967	9104FB OMNICELL 25K STAINLESS	Stainless Steel	Stainless Steel	No	25000 lb	77 lbs.	\$1,950.00
32968	9104FB OMNICELL 35K STAINLESS	Stainless Steel	Stainless Steel	No	35000 lb	77 lbs.	\$3,171.00
32969	9104FB OMNICELL 50K STAINLESS	Stainless Steel	Stainless Steel	No	50000 lb	169 lbs.	\$4,283.00
32970	9104FB OMNICELL 75K STAINLESS	Stainless Steel	Stainless Steel	No	75000 lb	169 lbs.	\$4,283.00

Compatible Accessories

Product #	Name/Description	Description	List Price
27999	OMNICELL LOAD CELL SUMMING	J-BOX, 6 CELLS, SS ENCLOSURE	\$375.00
28057	OMNICELL LOAD CELL SUMMING	J-BOX, 6 CELLS, FIBERGLASS	\$390.00
28058	OMNICELL LOAD CELL SUMMING	J-BOX, 8 CELLS, SS ENCLOSURE	\$438.00
28059	OMNICELL LOAD CELL SUMMING	J-BOX, 8 CELLS, FIBERGLASS ENC	\$448.00
28060	OMNICELL LOAD CELL SUMMING	J-BOX, 10 CELLS, STAINLESS ENC	\$607.00
32420	SUMMING JUNCTION BOX,4-CELL	FIBERGLASS,EXPANDABLE,NEMA 4X	\$269.00
32421	SUMMING JUNCTION BOX,SS 4-CELL	EXPANDABLE, NEMA 4X	\$248.00
67171M	ACC 1172 NEMA 4X RATED STAINLESS STEEL ANALOG JUNCTION BOX WITH FM LABEL		\$202.00



9104FB OmniCell Mounting Kits


Product #	Name / Description	List Price	Product #	Name / Description	List Price
93901	9104FB 3-OMC KIT 1K TOOL STEEL	\$2,649.00	93902	9104FB 4-OMC KIT 1K TOOL STEEL	\$35,185.00
93903	9104FB 3-OMC KIT 2.5K TL STEEL	\$2,649.00	93904	9104FB 4-OMC KIT 2.5K TL STEEL	\$3,456.00
93905	9104FB 3-OMC KIT 5K TOOL STEEL	\$2,649.00	93906	9104FB 4-OMC KIT 5K TOOL STEEL	\$3,456.00
93907	9104FB 3-OMC KIT 10K TOOLSTEEL	\$3,486.00	93908	9104FB 4-OMC KIT 10K TOOLSTEEL	\$4,572.00
93909	9104FB 3-OMC KIT 15K TOOLSTEEL	\$3,486.00	93910	9104FB 4-OMC KIT 15K TOOLSTEEL	\$4,572.00
93911	9104FB 3-OMC KIT 25K TOOLSTEEL	\$3,486.00	93912	9104FB 4-OMC KIT 25K TOOLSTEEL	\$4,572.00
93913	9104FB 3-OMC KIT 35K TOOLSTEEL	\$5,442.00	93914	9104FB 4-OMC KIT 35K TOOLSTEEL	\$7,180.00
93915	9104FB 3-OMC KIT 50K TOOLSTEEL	\$6,930.00	93916	9104FB 4-OMC KIT 50K TOOLSTEEL	\$9,164.00
93917	9104FB 3-OMC KIT 75K TOOLSTEEL	\$6,930.00	93918	9104FB 75K 4-OMC KIT TOOLSTEEL	\$8,688.00
93919	9104FB 3-OMC KIT 1K HYBRID	\$2,763.00	93920	9104FB 4-OMC KIT 1K HYBRID	\$3,608.00
93921	9104FB 3-OMC KIT 2.5K HYBRID	\$2,763.00	93922	9104FB 4-OMC KIT 2.5K HYBRID	\$3,608.00
93923	9104FB 3-OMC KIT 5K HYBRID	\$2,763.00	93924	9104FB 4-OMC KIT 5K HYBRID	\$3,608.00
93925	9104FB 3-OMC KIT 10K HYBRID	\$3,588.00	93926	9104FB 4-OMC KIT 10K HYBRID	\$4,708.00
93927	9104FB 3-OMC KIT 15K HYBRID	\$3,588.00	93928	9104FB 4-OMC KIT 15K HYBRID	\$4,708.00
93929	9104FB 3-OMC KIT 25K HYBRID	\$3,588.00	93930	9104FB 4-OMC KIT 25K HYBRID	\$4,708.00
93931	9104FB 3-OMC KIT 35K HYBRID	\$6,243.00	93932	9104FB 4-OMC KIT 35K HYBRID	\$8,248.00
93933	9104FB 3-OMC KIT 50K HYBRID	\$8,118.00	93934	9104FB 4-OMC KIT 50K HYBRID	\$10,748.00
93935	9104FB 3-OMC KIT 75K HYBRID	\$8,118.00	93936	9104FB 4-OMC KIT 75K HYBRID	\$10,748.00
93937	9104FB 3-OMC KIT 1K STAINLESS	\$4,290.00	93938	9104FB 4-OMC KIT 1K STAINLESS	\$5,644.00
93939	9104FB 3OMC KIT 2.5K STAINLESS	\$4,290.00	93940	9104FB 4OMC KIT 2.5K STAINLESS	\$5,644.00
93941	9104FB 3-OMC KIT 5K STAINLESS	\$4,290.00	93942	9104FB 4-OMC KIT 5K STAINLESS	\$5,644.00
93943	9104FB 3-OMC KIT 10K STAINLESS	\$6,429.00	93944	9104FB 4-OMC KIT 10K STAINLESS	\$8,496.00
93945	9104FB 3-OMC KIT 15K STAINLESS	\$6,429.00	93946	9104FB 4-OMC KIT 15K STAINLESS	\$8,496.00
93947	9104FB 3-OMC KIT 25K STAINLESS	\$6,429.00	93948	9104FB 4-OMC KIT 25K STAINLESS	\$8,496.00
93949	9104FB 3-OMC KIT 35K STAINLESS	\$9,741.00	93950	9104FB 4-OMC KIT 35K STAINLESS	\$12,912.00
93951	9104FB 3-OMC KIT 50K STAINLESS	\$13,077.00	93952	9104FB 4-OMC KIT 50K STAINLESS	\$17,360.00
93953	9104FB 3-OMC KIT 75K STAINLESS	\$13,077.00	93954	9104FB 4-OMC KIT 75K STAINLESS	\$17,360.00

Each mounting kit comes with the following:

3 or 4 Omnicells (depending on which model is being purchased), ACC 1172 NEMA 4X rated stainless steel analog junction box (PN 67171M) and 25' of six-conductor cable



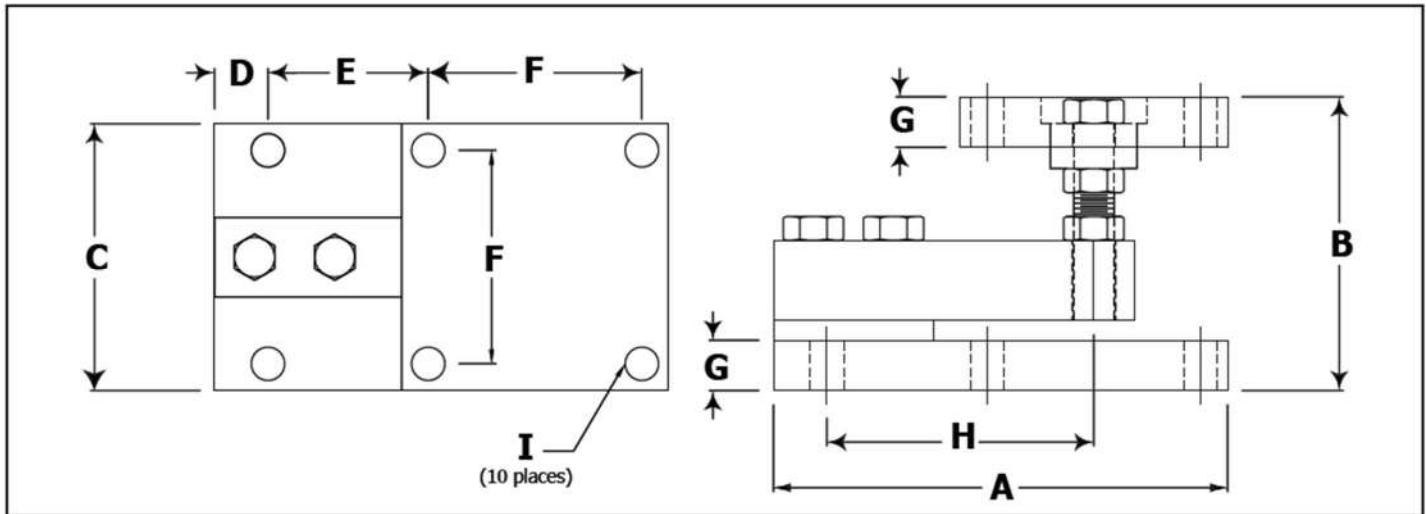
9106FB Specs & Notes

	Specifications:			
	Full Scale Output (FSO)	3.0 mV/V \pm 0.25%	Excitation Voltage	10 volts DC (15 maximum)
Accuracy Class	Class III/IIIL	Safe Overload	150%	
Combined Error (FSO)	< 0.03%	Ultimate Overload	300%	
Non-linearity (FSO)	< 0.03%	Bridge Resistance	350 Ω Nominal	
Hysteresis (FSO)	< 0.02%	Sealing	IP67	
Creep (20 minutes)	< 0.03%	Load Cell Cable	20' polyurethane cable	
Compensated Temperature	14°F to 104°F (-10°C to 40°C)	Load Cell Construction	Stainless Steel w/ welded covers	
Operating Temperature	0°F to 150°F (-18°C to 65°C)	Mount Construction	Stainless Steel	
NTEP	YES	FM Approved	YES	

Notes:

- **9106 FB Series:** A compact weighing assembly, designed for superior performance in medium weight ranges under the most hostile conditions.
- **Features of the 9106 FB Series:** Stainless steel, welded seal shear beam load cell, stainless steel mounting hardware with integral height adjustment, articulating load interface, and thermal expansion provisions. Designed for tanks, hoppers, blending, and mixing.
- **Kits include:** Three or four Omnicells, NEMA 4X rated stainless steel analog junction box, and 25' of six-conductor interface cable.
- Analog J-box and accessories: See Omnicell Accessories page.
- Contact Product Manager for application questions and product modifications.
- 5,000 pound capacity dimensions have changed from earlier versions of the 9106 FB Series.

RATED CAPACITY	DIMENSIONS All dimensions in inches								
	A	B	C	D	E	F	G	H	I
1000 — 5,000 lbs	7.12	4.00-4.50	5.00	0.56	2.00	4.00	0.70	4.00	0.63
10,000 lbs	8.50	5.00-5.50	5.00	0.75	3.00	4.00	0.94	5.00	0.69



9106FB OmniCells

Product #	Description	Capacity	Weight	List Price
27886	9106FB OMC 1000# STAINLESS	1000 lb	17 lbs.	\$908.00
27887	9106FB OMC 1500# STAINLESS	1500 lb	17 lbs.	\$908.00
27888	9106FB OMC 2500# STAINLESS	2500 lb	17 lbs.	\$908.00
27889	9106FB OMC 5000# STAINLESS	5000 lb	17 lbs.	\$908.00
27890	9106FB OMC 10K# STAINLESS	10000 lb	17 lbs.	\$1,120.00

Note:

- Load cell construction is Stainless steel with welded covers, Mount Construction is stainless steel
- 9106FB Omnicells are NTEP and FM Approved

9106FB 3 & 4 Mount Kits

9106FB OmniCell Mounting Kits

Product #	Name / Description	List Price	Product #	Name / Description	List Price
97646	9106FB 3-OMC KIT 1K SS-ANL	\$2,952.00	97665	9106FB 4-OMC KIT 1K SS-ANL	\$3,860.00
97647	9106FB 3-OMC KIT 1.5K SS-ANL	\$2,952.00	97666	9106FB 4-OMC KIT 1.5K SS-ANL	\$3,860.00
97648	9106FB 3-OMC KIT 2.5K SS-ANL	\$2,952.00	97667	9106FB 4-OMC KIT 2.5K SS-ANL	\$3,860.00
97649	9106FB 3-OMC KIT 5K SS-ANL	\$2,952.00	97668	9106FB 4-OMC KIT 5K SS-ANL	\$3,860.00
97650	9106FB 3-OMC KIT 10K SS-ANL	\$3,588.00	97669	9106FB 4-OMC KIT 10K SS-ANL	\$4,708.00

Note:

- Load cell construction is Stainless steel with welded covers, Mount Construction is stainless steel
- 9106FB Omnicells are NTEP and FM Approved


Each mounting kit comes with the following:

3 or 4 Omnicells (depending on which model is being purchased), ACC 1172 NEMA 4X rated stainless steel analog junction box (PN 67171M) and 25' of six-conductor cable

Compatible Accessories

Product #	Name/Description	Description	List Price
27999	OMNICELL LOAD CELL SUMMING	J-BOX, 6 CELLS, SS ENCLOSURE	\$375.00
28057	OMNICELL LOAD CELL SUMMING	J-BOX, 6 CELLS, FIBERGLASS	\$390.00
28058	OMNICELL LOAD CELL SUMMING	J-BOX, 8 CELLS, SS ENCLOSURE	\$438.00
28059	OMNICELL LOAD CELL SUMMING	J-BOX, 8 CELLS, FIBERGLASS ENC	\$448.00
28060	OMNICELL LOAD CELL SUMMING	J-BOX, 10 CELLS, STAINLESS ENC	\$607.00
32420	SUMMING JUNCTION BOX,4-CELL	FIBERGLASS,EXPANDABLE,NEMA 4X	\$269.00
32421	SUMMING JUNCTION BOX,SS 4-CELL	EXPANDABLE, NEMA 4X	\$248.00
67171M	ACC 1172 NEMA 4X RATED STAINLESS STEEL ANALOG JUNCTION BOX WITH FM LABEL		\$202.00



	Specifications:			
	Rated Output	2.0 mV/V ±0.002%	Safe Overload	200%
	Combined Error (FSO)	< 0.03%	Ultimate Overload	300%
	Creep (20 minutes)	< 0.0049%	Sideload	300%
	Compensated Temperature	14°F to 104°F (-10°C to 40°C)	Bridge Resistance	500Ω Nominal
	Operating Temperature	-40°F to 176°F (-40°C to 80°C)	Protection	IP69K
	Excitation Voltage	5 volts DC (15 maximum)	Load Cell Cable	25' polyurethane cable
	FM Approved	YES	Load Cell Construction	Stainless Steel 17-4 PH (1.4848)
	NTEP	YES	Sealing	Complete hermetic seal' cable entry sealed by glass to metal header

Each mounting kit comes with the following:

<ul style="list-style-type: none"> • 3 or 4 Omnicells (depending on which model is being purchased) 	<ul style="list-style-type: none"> • ACC 1172 NEMA 4X rated stainless steel analog junction box (PN 67171M) 	<ul style="list-style-type: none"> • 25' of six-conductor cable
--	--	--

9109 OmniCells

Product #	Description	Mount Construction	Capacity	Weight	List Price
98463	9109 OMC 1000 LB SS NTEP	Stainless Steel	1000 lb	18 lbs.	\$1,592.00
98464	9109 OMC 2500 LB SS NTEP	Stainless Steel	2500 lb	18 lbs.	\$1,592.00
98465	9109 OMC 5000 LB SS NTEP	stainless Steel	5000 lb	18 lbs.	\$1,592.00
98466	9109 OMC 10K LB SS NTEP	Stainless Steel	10000 lb	18 lbs.	\$2,303.00
98467	9109 OMC 25K LB SS NTEP	Stainless Steel	25000 lb	46 lbs.	\$2,303.00
98468	9109 OMC 50K LB SS NTEP	Stainless Steel	50000 lb	84 lbs.	\$4,800.00
98469	9109 OMNICELL 1K HYBRID	Zinc Plated Mild Steel	1000 lb	18 lbs.	\$973.00
98470	9109 OMNICELL 2.5K HYBRID	Zinc Plated Mild Steel	2500 lb	18 lbs.	\$973.00
98471	9109 OMNICELL 5K HYBRID	Zinc Plated Mild Steel	5000 lb	18 lbs.	\$973.00
98472	9109 OMNICELL 10K HYBRID	Zinc Plated Mild Steel	10000 lb	18 lbs.	\$1,260.00
98473	9109 OMNICELL 25K HYBRID	Zinc Plated Mild Steel	25000 lb	46 lbs.	\$1,260.00
98474	9109 OMNICELL 50K HYBRID	Zinc Plated Mild Steel	50000 lb	84 lbs.	\$2,625.00

Note:

- Load cell construction is Stainless Steel 17-4 PH (1.4548)
- 9109 Omnicells are NTEP and FM Approved

9109 OmniCell Mounting Kits

Product #	Name / Description	List Price	Product #	Name / Description	List Price
98508	9109 3-OMC KIT 1K SS/SS-ANL	\$5,004.00	98520	9109 4-OMC KIT 1K SS/SS-ANL	\$6,596.00
98509	9109 3-OMC KIT 2.5K SS/SS-ANL	\$5,004.00	98521	9109 4-OMC KIT 2.5K SS/SS-ANL	\$6,596.00
98510	9109 3-OMC KIT 5K SS/SS-ANL	\$5,004.00	98522	9109 4-OMC KIT 5K SS/SS-ANL	\$6,596.00
98511	9109 3-OMC KIT 10K SS/SS-ANL	\$7,137.00	98523	9109 4-OMC KIT 10K SS/SS-ANL	\$9,440.00
98512	9109 3-OMC KIT 25K SS/SS-ANL	\$7,137.00	98524	9109 4-OMC KIT 25K SS/SS-ANL	\$9,440.00
98513	9109 3-OMC KIT 50K SS/SS-ANL	\$14,628.00	98525	9109 4-OMC KIT 50K SS/SS-ANL	\$17,844.00
98514	9109 3-OMC KIT 1K HYB/SS-ANL	\$3,147.00	98526	9109 4-OMC KIT 1K HYB/SS-ANL	\$4,120.00
98515	9109 3-OMC KIT 2.5K HYB/SS-ANL	\$3,147.00	98527	9109 4-OMC KIT 2.5K HYB/SS-ANL	\$4,120.00
98516	9109 3-OMC KIT 5K HYB/SS-ANL	\$3,147.00	98528	9109 4-OMC KIT 5K HYB/SS-ANL	\$4,120.00
98517	9109 3-OMC KIT 10K HYB/SS-ANL	\$4,008.00	98529	9109 4-OMC KIT 10K HYB/SS-ANL	\$5,268.00
98518	9109 3-OMC KIT 25K HYB/SS-ANL	\$4,008.00	98530	9109 4-OMC KIT 25K HYB/SS-ANL	\$5,268.00
98519	9109 3-OMC KIT 50K HYB/SS-ANL	\$8,103.00	98531	9109 4-OMC KIT 50K HYB/SS-ANL	\$10,728.00

Note:

- Load cell construction is Stainless Steel 17-4 PH (1.4548)
- 9109 Omnicells are NTEP and FM Approved

Specifications:			
Full Scale Output (FSO)	2.0 mV/V \pm 0.002%	Safe Overload	150%
Combined Error (FSO)	< 0.02%	Ultimate Overload	300%
Non-linearity (FSO)	< 0.05%	Sideload	20%
Creep (20 minutes)	< 0.03%	Bridge Resistance	1,000 Ω Nominal
Compensated Temperature	14°F to 104°F (-10°C to 40°C)	Protection	"True" Hermetic - IP69K
Operating Temperature	-40°F to 175°F (-40°C to 80°C)	Load Cell Cable	40' polyurethane cable
Excitation Voltage	5 to 15 VDC	Load Cell Construction	Stainless Steel true hermetic seal
NTEP	YES	FM Approved	YES



9120 OmniCells

Product #	Description	Mount Construction	Capacity	Weight	List Price
30832	9120 OMNICELL 7.5 TON ZINC MT	Zinc plated mild steel	7.5 ton	53 lbs.	\$1,370.00
30834	9120 OMNICELL 15 TON ZINC MT	Zinc plated mild steel	15 ton	53 lbs.	\$1,370.00
30836	9120 OMNICELL 22.5 TON ZINC MT	Zinc plated mild steel	22.5 ton	53 lbs.	\$1,370.00
30838	9120 OMNICELL 30 TON ZINC MT	Zinc plated mild steel	30 ton	93 lbs.	\$1,741.00
30840	9120 OMNICELL 40 TON ZINC MT	Zinc plated mild steel	40 ton	93 lbs.	\$1,741.00
30842	9120 OMNICELL 50 TON MS MOUNT	Cast mild steel	50 ton	163 lbs.	\$2,847.00
30844	9120 OMNICELL 100 TON MS MOUNT	Cast mild steel	100 ton	163 lbs.	\$4,113.00

Note:







- Load cell construction is Stainless Steel, true hermetic seal
- 9120 Omnicells are NTEP and FM Approved

6/8/10 Cell & Enclosure Options:

6/8/10 Cell & Enclosure Options

Product #	Name/Description	Description	List Price
27999	OMNICELL LOAD CELL SUMMING	J-BOX, 6 CELLS, SS ENCLOSURE	\$375.00
28057	OMNICELL LOAD CELL SUMMING	J-BOX, 6 CELLS, FIBERGLASS	\$390.00
28058	OMNICELL LOAD CELL SUMMING	J-BOX, 8 CELLS, SS ENCLOSURE	\$438.00
28059	OMNICELL LOAD CELL SUMMING	J-BOX, 8 CELLS, FIBERGLASS ENC	\$448.00
28060	OMNICELL LOAD CELL SUMMING	J-BOX, 10 CELLS, STAINLESS ENC	\$607.00
32420	SUMMING JUNCTION BOX,4-CELL	FIBERGLASS,EXPANDABLE,NEMA 4X	\$269.00
32421	SUMMING JUNCTION BOX,SS 4-CELL	EXPANDABLE, NEMA 4X	\$248.00
67171M	ACC 1172 NEMA 4X RATED STAINLESS STEEL ANALOG JUNCTION BOX WITH FM LABEL		\$202.00

Fairbanks Omnicell Overview

Fairbanks Omnicells						
Model	9101FB	9102FB	9104FB	9106FB	9109	9120
Applications	Light vessels, conveyors, vibratory feeders	Small tanks, in-motion, process reactors	Storage silos, tanks, hoppers	Biomedical, reactors, and general washdown	Process reactors, mixers, blenders	Heavy capacity, silos, bins
Features	Vibration suppression mount	Articulating mount, Integral height adjustment	Great accuracy for high capacities	Stainless welded load cell, articulating mount	Compact design, high accuracy for any environment	ULTRA HEAVY capacity
Capacity (lbs unless noted)	100 to 2,500	1,000 to 10,000	1,000 to 75,000	1,000 to 10,000	1,000 to 50,000	7.75 tons to 300 tons
Material –	100-250 Stainless steel 500-2,500 Alloy tool steel	Stainless steel potted	Alloy or stainless steel	Stainless steel with welded covers	Stainless steel true hermetic seal	Stainless steel true hermetic seal
Load Cell	Neoprene rubber top mount; stainless base plate	Stainless steel	Nickel-plated mild steel or stainless steel	Stainless steel	Tool steel, zinc plated, or stainless steel	Tool steel, zinc plated, or stainless steel
Assembly						
Conduit adapter	NO	NO	YES	NO	NO	NO
Design	Single-ended beam	Single-ended shear beam	Double-ended shear beam	Single-ended shear beam	Double-ended shear beam	Rocker Column canister
Accuracy class	0.03% FS	0.03% FS	0.03% FS	0.03% FS	0.03% FS	0.03% FS
NTEP CC No.	Some models	07-009	Some models	N/A	04-072	97-078
FM Approved	500 lb capacity & above - all Classes, Groups & Divisions	Yes - all Classes, Groups & Divisions	Yes - all Classes, Groups & Divisions	Yes - all Classes, Groups & Divisions	Yes - all Classes, Groups & Divisions	Yes - all Classes, Groups & Divisions
Safe sideload	100% of rated capacity	100% of rated capacity	100% of rated capacity	100% of rated capacity	100% of rated capacity	20% of rated capacity
Safe overload	150% of rated capacity	150% of rated capacity	150% of rated capacity	150% of rated capacity	200% of rated capacity	150% of rated capacity
Ultimate overload	300% of rated capacity	300% of rated capacity	300% of rated capacity	300% of rated capacity	300% of rated capacity	300% of rated capacity
Load plate	Semi-floating	Semi-floating	Semi-floating	Semi-floating	Semi-floating	Rocker
Self-checking	YES	YES	YES	YES	YES	YES
Height adjustment	Shim	Threads	Shim	Threads	Shim	Self-aligning within ¼"
Rated output	3mV/V	3mV/V	3mV/V	3mV/V	2mV/V	2mV/V
Bridge resistance	350Ω	350Ω	700Ω	350Ω	500Ω	1000Ω
Environmental	IP66	IP66	IP67	IP67	IP69K	IP69K
Cable length (ft)	20	20	20	20	25	40' / 60'
Cable type	Polyurethane	Polyurethane	Polyurethane	Polyurethane	Polyurethane	Polyurethane
Kits available	YES	YES	YES	YES	YES	NO

Omniceil Placement Diagram

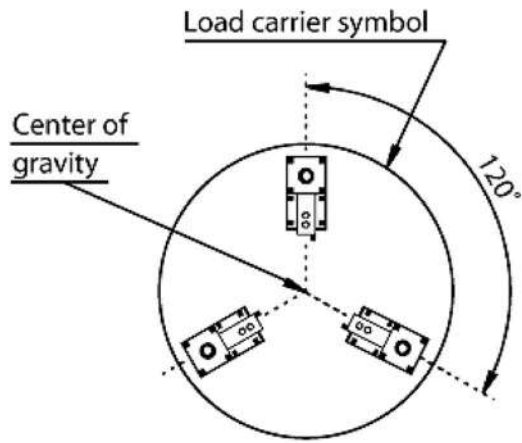


Figure 1

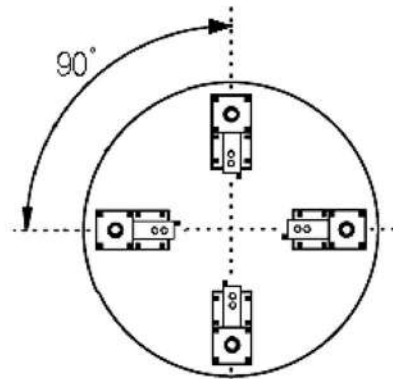


Figure 2

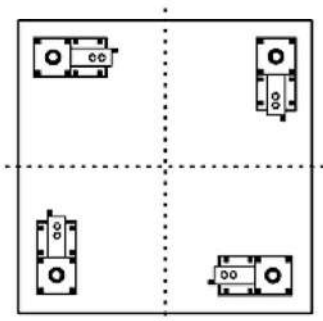


Figure 3

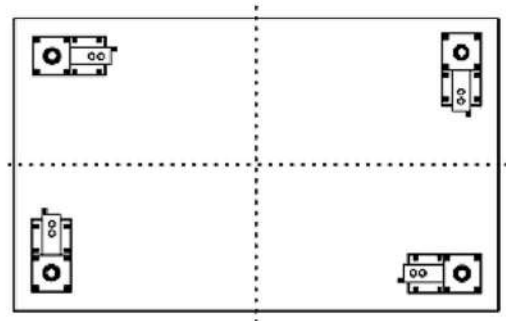


Figure 4

Follow these guidelines for installing Omnicell® Load Cells.

1. The loading points of the modules should be as far from one another as the structure allows.
2. When installing the square and rectangle Omnicell® units, line up the **Base Plates** of the Load Cells with each other, and align them evenly from the end and the sides of the units.
3. When installing six Load Cells (Figure 5), **be extremely careful** to position the center Omnicells® to exactly the same height as the outer Omnicells®.

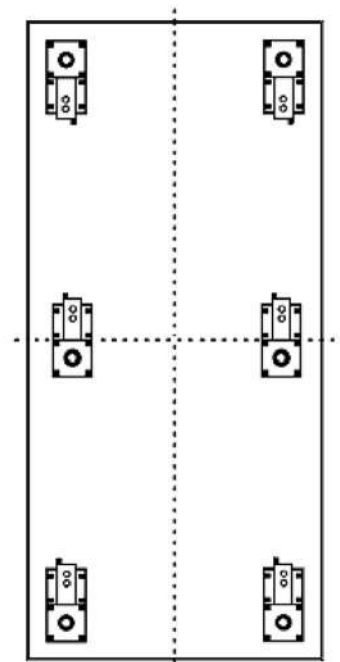


Figure 5



OMNIMOUNT PRO

WEIGHING SYSTEM



- **NTEP Approved**
- **Legal for Trade, High Accuracy Weighing System**
- **Capacities range from 2,000 lbs to 40,000 lbs**
- **Constructed of 304 Stainless Steel**

The Certified Solution for Legal-for-Trade Applications

The OmniMount PRO Weighing System is a premier weighing solution designed to meet the rigorous demands of commercial applications requiring Legal-for-Trade compliance. This system is perfect for retrofitting or new installations in a wide variety of industries, including industrial, agricultural, and chemical sectors.

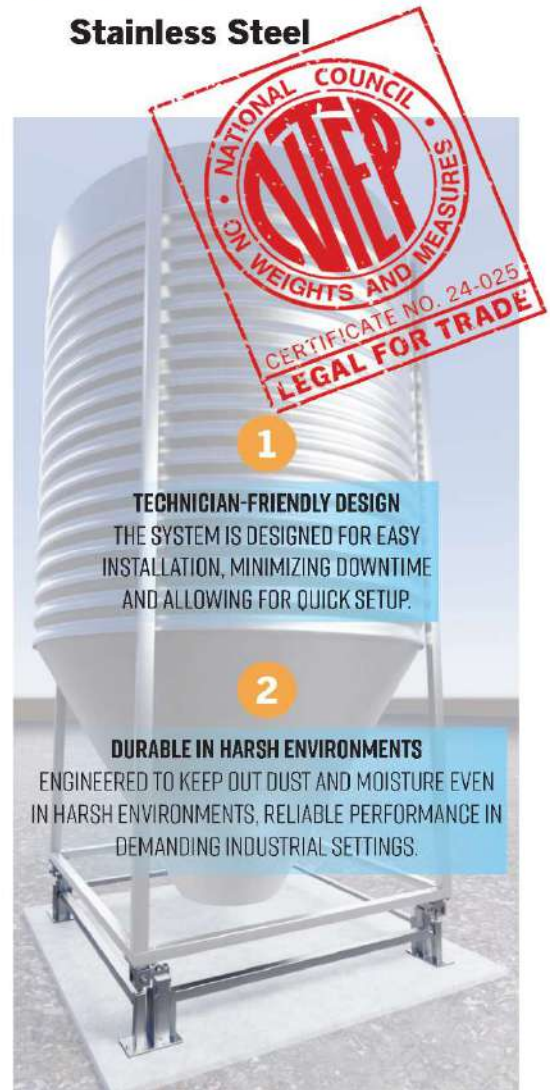
Unmatched Versatility and Customization

Each OmniMount PRO system is meticulously tailored to meet your specific size and operational requirements, ensuring seamless integration under existing or newly installed tanks, hoppers, silos, or weigh vessels. Bolt patterns are designed to match your tank or hopper legs, ensuring a precise and secure fit for your application. This flexibility allows OmniMount PRO to provide a custom fit solution while delivering exceptional performance in even the most challenging environments.

TURN YOUR EXISTING TANK OR HOPPER INTO A LEGAL FOR TRADE SCALE WITH EASE!



PROVIDE FAIRBANKS WITH THE HOPPER'S LENGTH, WIDTH, PLUS HEIGHT OF THE LOAD CELL STANDS AND WE'LL CUSTOM FABRICATE A FULL STAINLESS STEEL BOLT-IN **OMNIMOUNT PRO** WEIGHING SYSTEM TO YOUR EXACT DIMENSIONS.





OmniMount PRO

WEIGHING SYSTEM

WEIGHING SOLUTIONS FOR THE WORLD

Advanced Engineering for Superior Performance:

- **Rocker Pin Assembly:** The system uses a rocker pin to introduce the load, ensuring it is applied directly along the load cell's neutral axis, which enhances accuracy and precision.
- **100% Uplift Protection:** For added safety, the system features complete protection against any uplift forces.
- **Adjustable Side-to-Side Checking:** This feature offers enhanced flexibility, allowing for better control over load placement and stability.

PRECISION WEIGHING FOR YOUR INDUSTRY:



AGRICULTURE

The OmniMount PRO system is perfect for use with fertilizer blenders and grain silos.

CHEMICAL

Handles the precision and durability demands of challenging chemical environments.

MINING AND AGGREGATES

Built to withstand vibrations and loads from blending mixing, and other high-vibration activities.



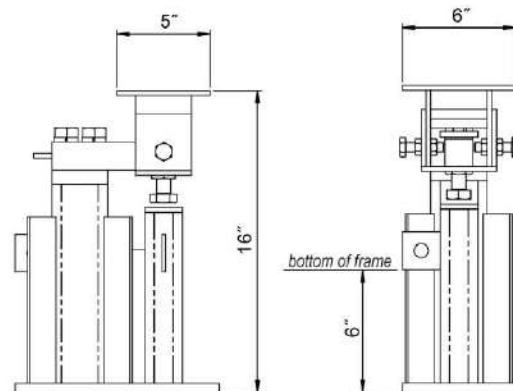
SPECIFICATIONS

- Capacities 2,000 to 40,000 lbs.
- Mount construction 304 stainless steel
- Frame construction Stainless steel
- Load Cell:
 - Output 3 mV/v
 - Combined error 0.2% of capacity
 - Compensated temperature 14° F – 104° F
 - Overload protection 150% of capacity
 - Bridge resistance 350Ω
 - Load cell construction 17-4 stainless steel
 - Load cell sealing IP68
 - Cable length:
 - Capacities <= 10,000 lbs. 19.6 ft.
 - Capacities <= 15,000 lbs. 32 ft.
- Approvals NTEP 24-025

DIMENSIONS

Each OmniMount PRO system is customized to suit the exact size requirements to fit under existing or newly installed vessels. The following side lengths are NTEP approved based on the corresponding capacity ranges:

- 2,000 to 5,000 lbs. 1.35 to 3.95 ft.
- 8,000 to 30,000 lbs. 3.95 to 8.75 ft.
- 10,000 to 40,000 lbs. 8.0 to 20.0 ft.



Dimensions in the above drawing are provided as an example. Final specifications are subject to individual applications.

Call toll-free for the representative nearest you:
(800) 451-4107
 Call between 8:00 a.m. – 5:00 p.m. Central Time
 Corporate Headquarters: 6800 W. 64th Street, Overland Park, Kansas 66202
 (816) 471-0231 fairbanks.com

Models and specifications subject to change without notice. © Fairbanks Scales Inc.

03/25 100312



OmniMount Pro Pricing

OMNIMOUNT PRO

Product #	Description	Square or Rectangle Side Length	Capacity	Cable Length	Weight	List Price
39879	OmniMount PRO System, 2K	1.35 to 3.95	2,000 lbs	19.6'	--	\$9,969.00
39880	OmniMount PRO System, 5K	1.35 to 3.95	5,000 lbs	19.6'	--	\$9,969.00
39881	OmniMount PRO System, 8K	3.95 to 8.75	8,000 lbs	19.6'	--	\$14,069.00
39882	OmniMount PRO System, 10K	3.95 to 20.0	10,000 lbs	19.6'	--	\$14,069.00
39883	OmniMount PRO System, 20K	3.95 to 20.0	20,000 lbs	32'	--	\$22,259.00
39884	OmniMount PRO System, 30K	3.95 to 20.0	30,000 lbs	32'	--	\$22,259.00
39885	OmniMount PRO System, 40K	8.0 to 20.0	40,000 lbs	32'	--	\$26,099.00

OmniMount Pro Specs

OmniMount PRO Specifications

Safe Overload	150%	Output	3 mV/V
Bridge Resistance	350 Ω Nominal	Combined Error	0.2% of capacity
Sealing	Welded Seal, IP68	Compensated Temperature	14° to 104 ° F
Load Cell Construction	17-4 Stainless Steel	Operating Temperature	-40° to 176 ° F
Mount Construction	304 Stainless Steel	Excitation Voltage	5-15 VDC
Frame Construction	Stainless Steel	Mechanical Overload	150% of capacity
NTEP	Yes	Protection	IP68

Notes:

The **OmniMount PRO** includes:

- Four (4) mounts with load cells.
- One (1) junction box.
- One (1) custom supporting frame.

This **OmniMount PRO Weighing System** is intended for use with

- **Non-skirted** vessels,
- With four (4) supports,
- Side lengths ranging from 3.95 to 8.75 feet (other capacities have different approved side lengths).

Notes:

- NTEP approval requires the system to use an NTEP-certified instrument.
- [Contact the Solutions Group](#) for:
 - **Non-Standard Capacities:** Higher capacities than standard may be available (may not be legal for trade).
 - **Non-Standard Number of Supports:** This includes vessels with 3, 5, or 6 supports.
- You must complete the OmniMount PRO worksheet (101395) when submitting your order.

Before your first installation, always consult local weights and measures officials.

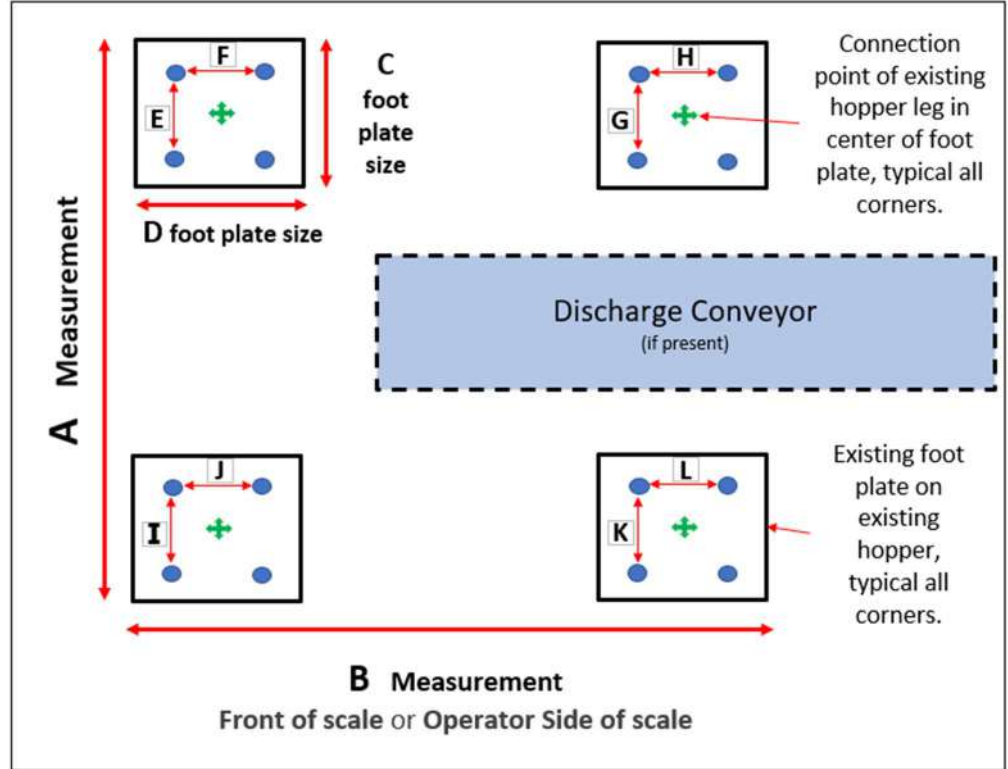
This product introduces a new approach to tank and hopper weighing, so engaging the relevant authorities in advance is recommended.

You can adapt the sample letter (101387) located under worksheets when contacting your local Weights and Measures office.



Example of form 101395 for information needed for installation

- For orientation, **DO NOT** use North, East, South or West. Please us A and B.
- Side A will always be one of the following, 90 degrees to the discharge conveyor or unload mechanism (if present or looking from the front at the scale
- Side B will always be one of the following, parallel to the discharge conveyor or unload mechanism (if present) of the front of the scale/operator side of the scale
- **ALL measurements in yellow boxes must be provided to process quote/order**
- Provide foot plate dimensions for C and D, then show orientation of bold pattern with specific dimensions
- **Note:** Foot plate mounts directly in the center of the mount upper plate.
- **Note:** Not all hoppers will feature a discharge conveyor or similar unloading mechanism



Hopper Brand:		If applicable.
Hopper Style:		Square, rectangle, round hopper - vertical mixer, horizontal mixer, non mixer, etc.
Hopper Capacity:		List in pounds (lbs).
Hopper Empty weight:		List in pounds (lbs).

Number of Mounts	0
-------------------------	----------

A:	0	inches. Outside edge of 'foot' plate to outside edge of opposite 'foot' plate.
B:	0	inches. Outside edge of 'foot' plate to outside edge of opposite 'foot' plate.
C:	0	inches. Outside edge of 'foot' plate to outside edge of 'foot' plate.
D:	0	inches. Outside edge of 'foot' plate to outside edge of 'foot' plate.
E:	0	inches. Center of hole to center of hole
F:	0	inches. Center of hole to center of hole
G:	0	inches. Center of hole to center of hole
H:	0	inches. Center of hole to center of hole
I:	0	inches. Center of hole to center of hole
J:	0	inches. Center of hole to center of hole
K:	0	inches. Center of hole to center of hole
L:	0	inches. Center of hole to center of hole