

XXXXXXXXXXXXX
 X X X X X X X X X X
 X X X X X X X X X X
 X X X X X X X X X X
 X X X X X X X X X X
 XXXXXXXXXXXXX



VeeandCo Cross*Stitch Designs

"Designs To Make You Smile"

3145 Redwing Lane, Rapid City, SD 57703 www.veeandco.com

Swirly Snow

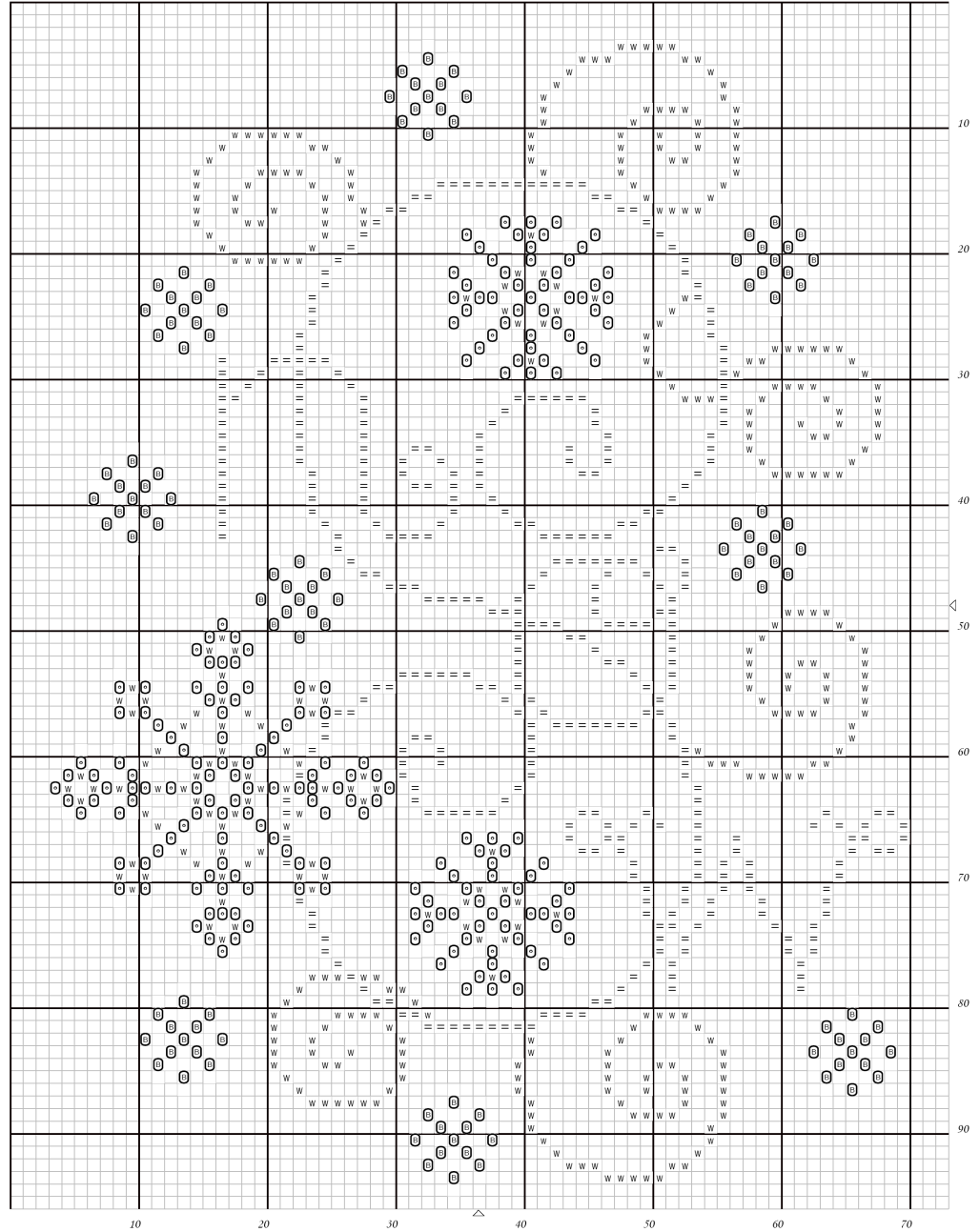


Stitch Count: 67 X 92

Fabric: See Below

Key:

- = 4240 DMC Variation
- W 4220 DMC Variation
- Mill Hill Glass Bead 252 Iris
- B Mill Hill Glass Bead 2009 Ice Lilac



Approximate Sizes:

14Ct 5.21 x 6.86

16Ct 4.56 x 6

18Ct 4.06 x 5.33*

*Using 18Ct, I highly suggest using MH Petite Glass Beads

**All cross-stitches worked with 2 strands floss.
 Beads are attached with a cross-stitch in the same color as the snowflake.**

The chart design "Swirly Snow" is the sole property of VeeandCo Cross*Stitch Designs and Frames and is fully protected by copyright laws. You may not link this chart to any personal website or copy and/or distribute the chart in any way without the expressed written permission from VeeandCo. Every effort has been made to ensure the chart, diagram and instructions are correct. Copyright © 2008 VeeandCo Cross*Stitch Designs and Frames.