

WICHITA

beachfront



- ↑ Lodge; 13, 14, 15, 22, 23, & 24: 1 room
16 & 25: 2 rooms
11 & 21: 3 room efficiency units

🕒 Located on the beachfront next to Arapaho

🚻 Bathroom with tub/shower combo

- ✚ Porch; Units 11 & 21 are efficiency units including a full kitchen with stove, microwave, refrigerator, coffee pot, and toaster oven

🔥 One shared fire pit next to building

♿ No handicap rooms

Beds & Capacity by Unit

	Unit #	11	13	14	15	16	21	22	23	24	25
Beds	Twin	2					1				
	Bunk		1	1	1	1	1	1	1	1	1
	Double					1					1
	Queen	1		1	1	1	1	1	1	1	1
	King	1	1								
Capacity	Minimum	3	3	3	3	4	3	3	3	3	4
	Normal	6	4	4	4	6	5	4	4	4	6
	Maximum	7	5	5	5	6	5	5	5	5	6

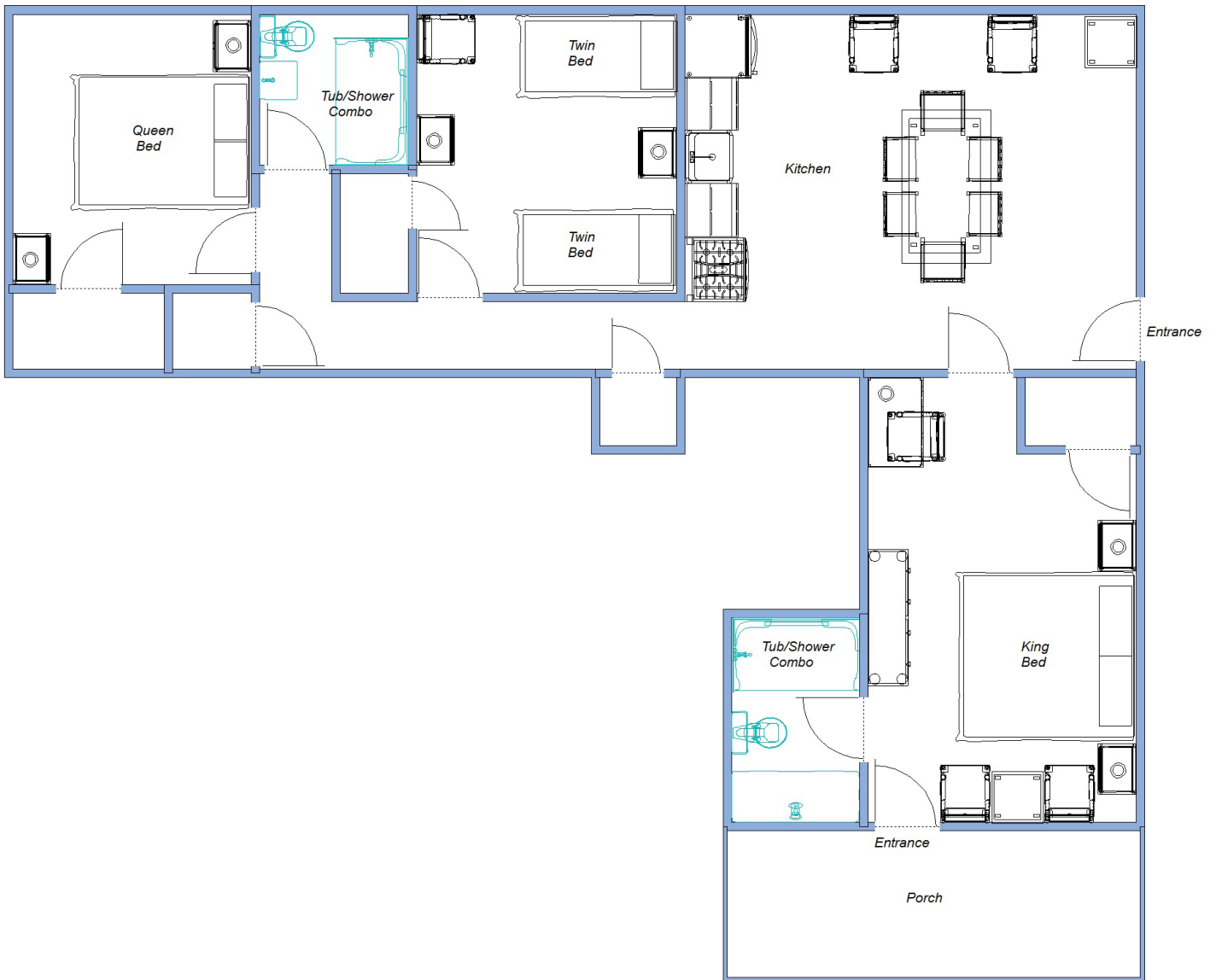
Summer 2019 Pricing

Efficiency Unit 11 & 21: Includes maid service but NO MEALS. Optional meal plans in either dining room available. All non-efficiency units have meals on the Hill. Gratuities for Housekeepers not included. No single occupancy.

	Adult	7 - 13 yr old	6 - 1 yr old	
13-16; 22-15	\$945.00	\$440.65	\$94.50	
11	\$2,619.00 per week		\$174.00 per week, per person over 6 occupants	
21	\$2,520.00 per week		Maximum 5, no additional guests	

WICHITA

Unit 11
Approximately 915 square feet

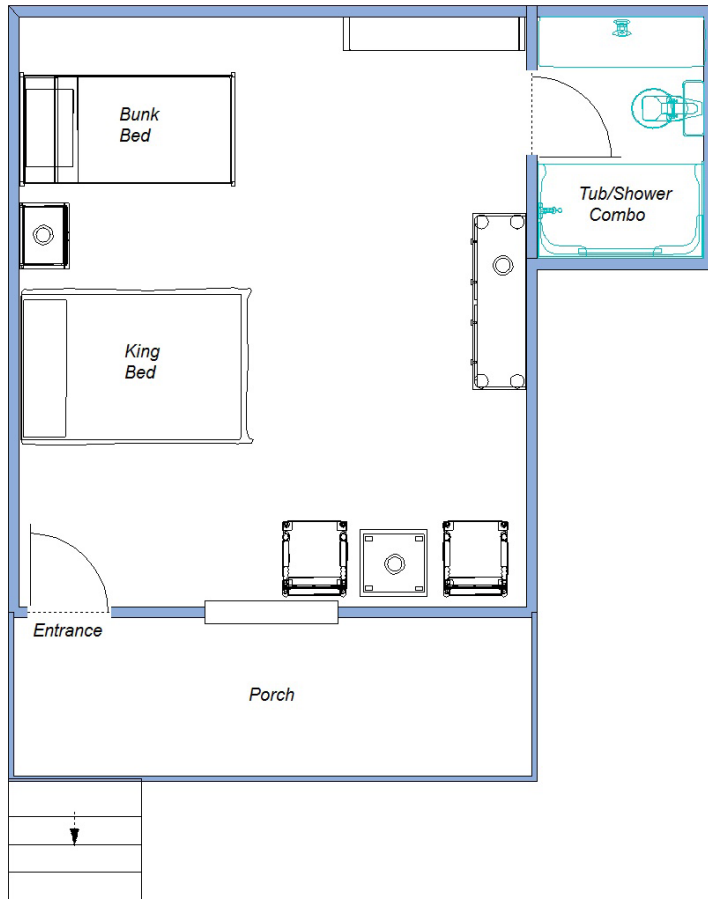


Lake Pleasant

WICHITA

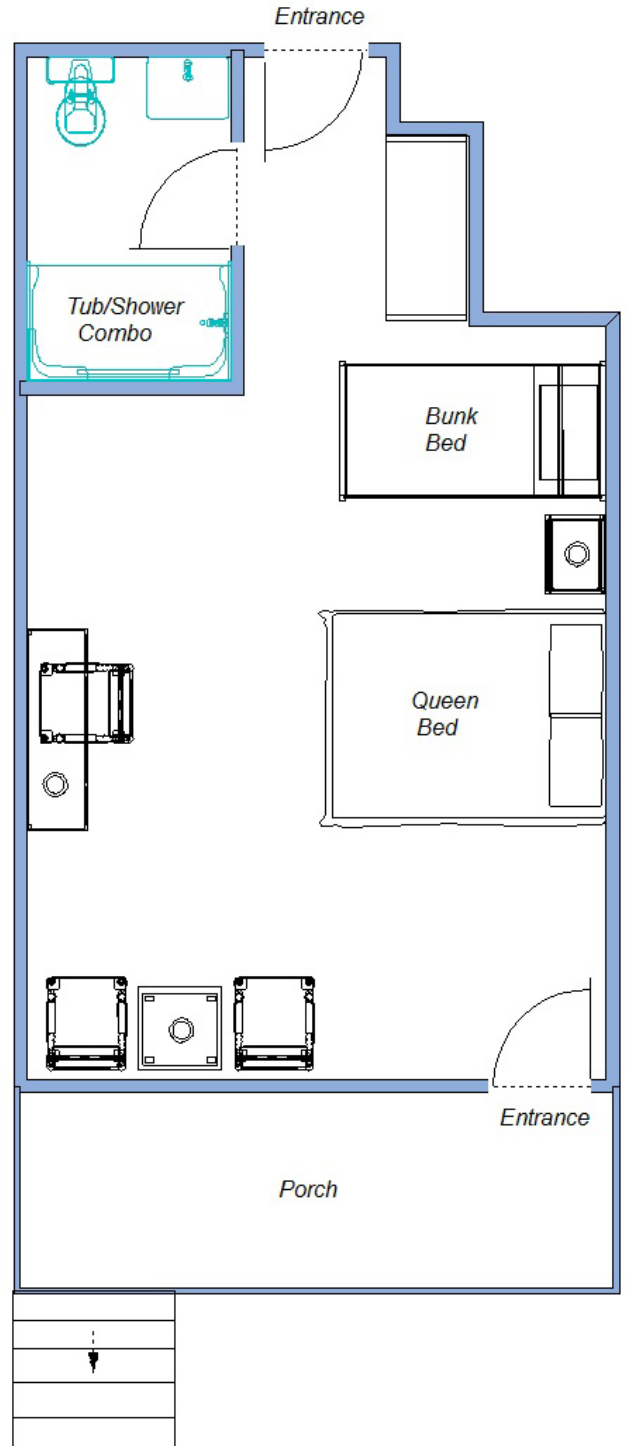
Unit 13

Approximately 310 square feet



Unit 14

Approximately 354 square feet

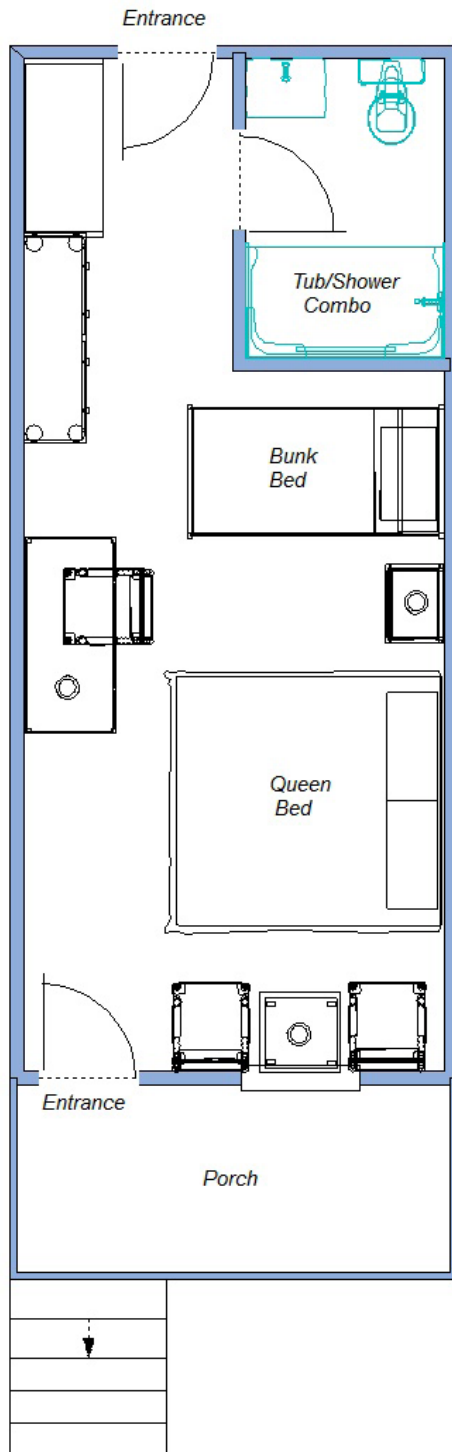


Lake Pleasant

WICHITA

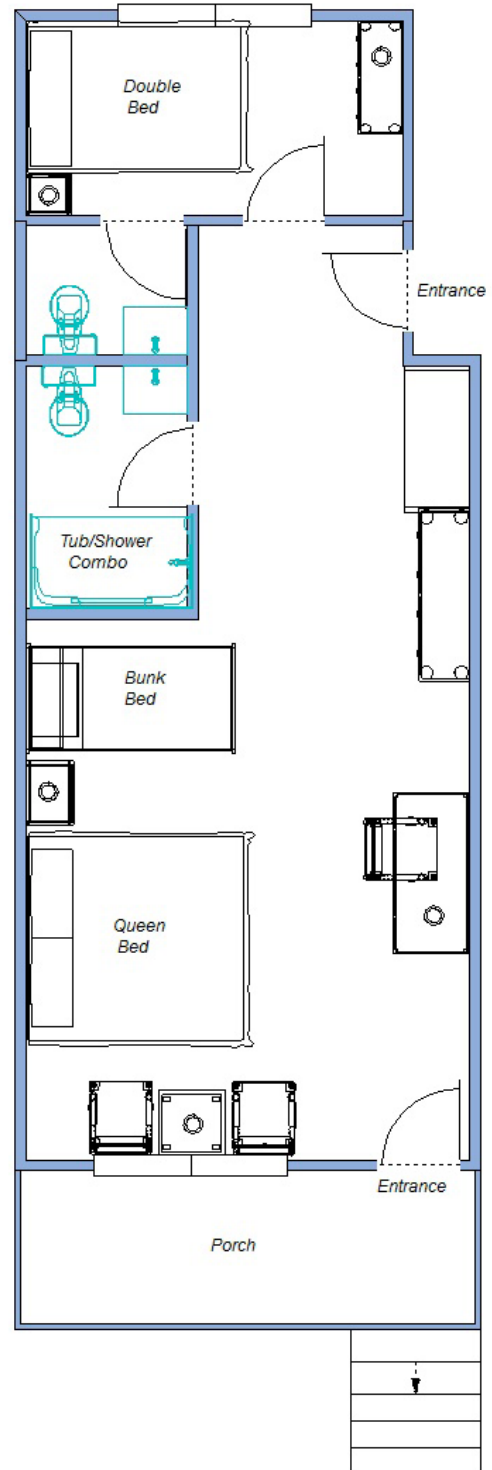
Unit 15

Approximately 273 square feet



Unit 16

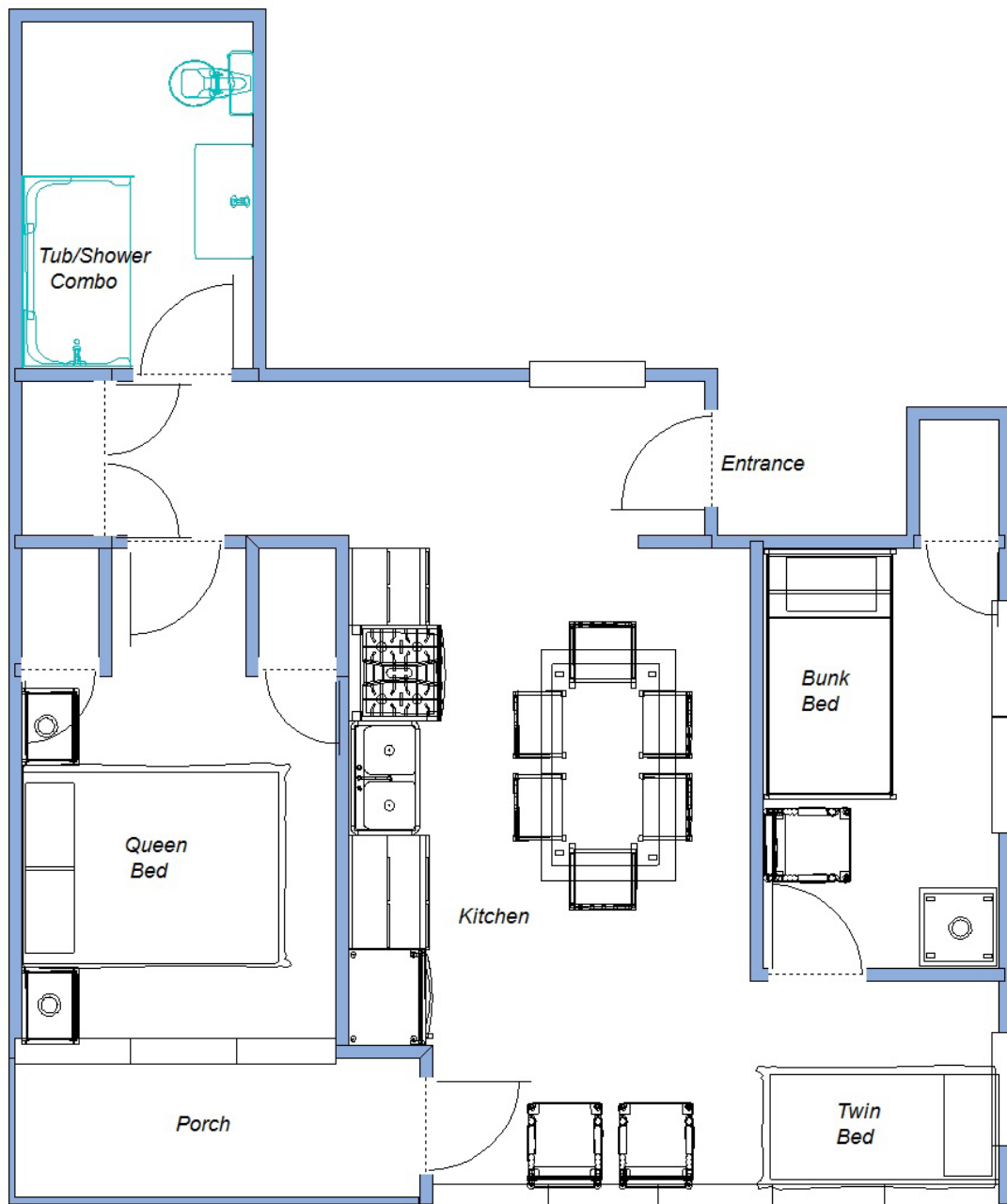
Approximately 490 square feet



Lake Pleasant

WICHITA

Unit 21: Upstairs
Approximately 580 square feet

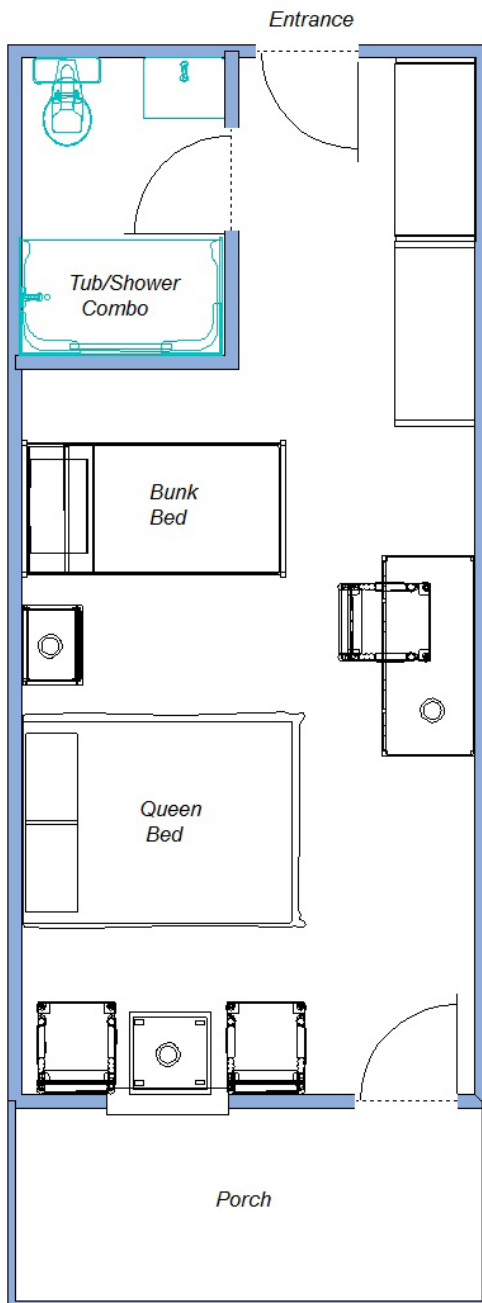


Lake Pleasant

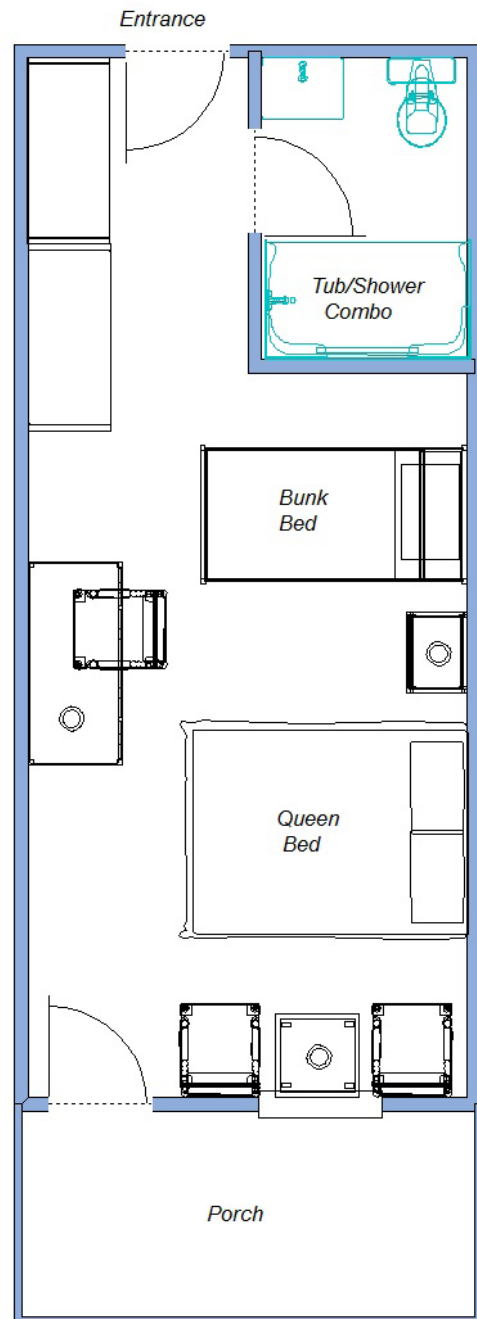
WICHITA

Lake Pleasant

Unit 22: Upstairs
Approximately 285 square feet

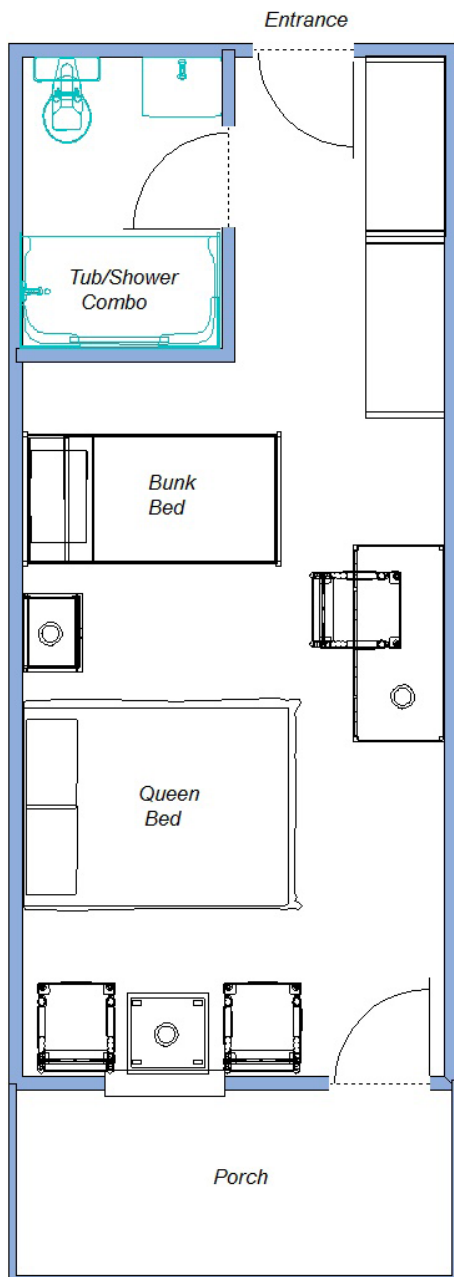


Unit 23: Upstairs
Approximately 285 square feet



WICHITA

Unit 24: Upstairs
Approximately 280 square feet



Unit 25: Upstairs
Approximately 385 square feet

