

CHEROKEE *hillside*



📍 5 Cabins; A: 3 rooms, B & E: 1 room,
C, D, & F: 2 rooms

🕒 Located on the Hillside

🚻 Bathroom with tub/shower combo

✚ Units A, B, C, & E: Screened in porch
Units D & F are efficiency units including a full
kitchen with stove, microwave, refrigerator, and
toaster oven

🔥 Units B, C, & D have fire pits

♿ No handicap rooms

Beds & Capacity by Unit

	Unit	A	B	C	D	E	F
Beds	Twin	4			1		
	Bunk			2	1		2
	Double						
	Queen	1	1	1	1	1	
	King						1
Capacity	Minimum	5	NA	5	3	NA	4
	Units A, C, D, & E: 2 Adult Rates Included in Minimum						
	Normal	6	2	6	5	2	6
	Maximum	7	3	7	6	3	7

Summer 2019 Pricing

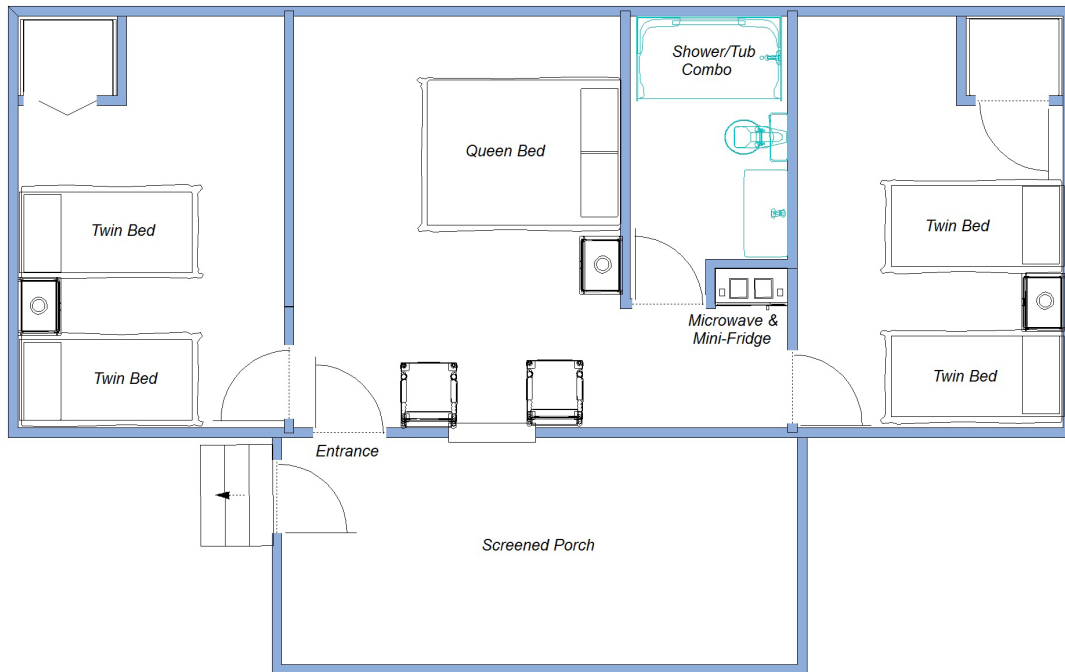
Unit B & E: Contact Registrar for single occupancy rates. **Units A, C, D, & F:** No single occupancy.
Efficiency Unit D & F: Includes maid service but NO MEALS. Optional meal plans in either
dining room available. All non-efficiency units have meals on the Hill. Gratuities for Housekeepers
not included.

	Adult	7 - 13 yr old	1 - 6 yr old	
A,B,C,&E	\$924.00	\$434.35	\$91.38	
D	\$2,469.00 per week		\$174.00 per week, per person over 4 occupants	
F	\$2,568.00 per week		\$174.00 per week, per person over 6 occupants	

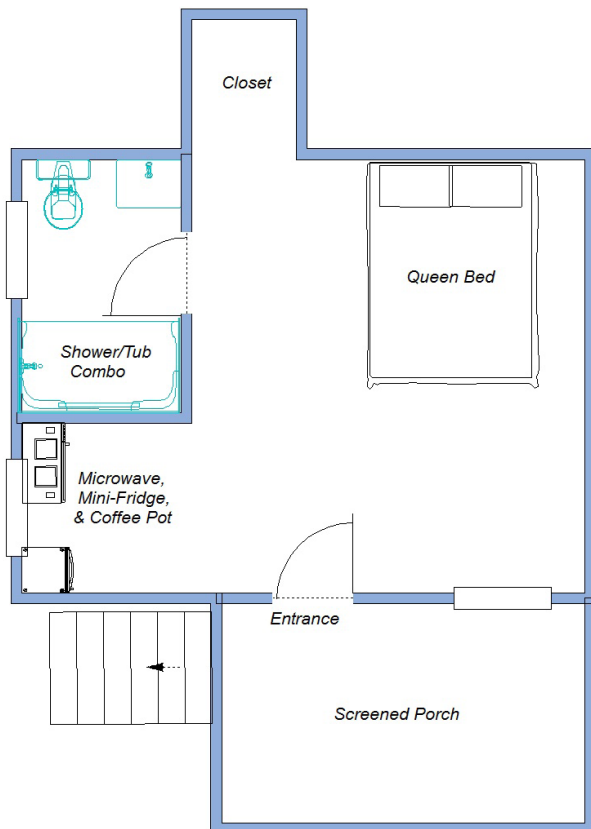
CHEROKEE

Unit A

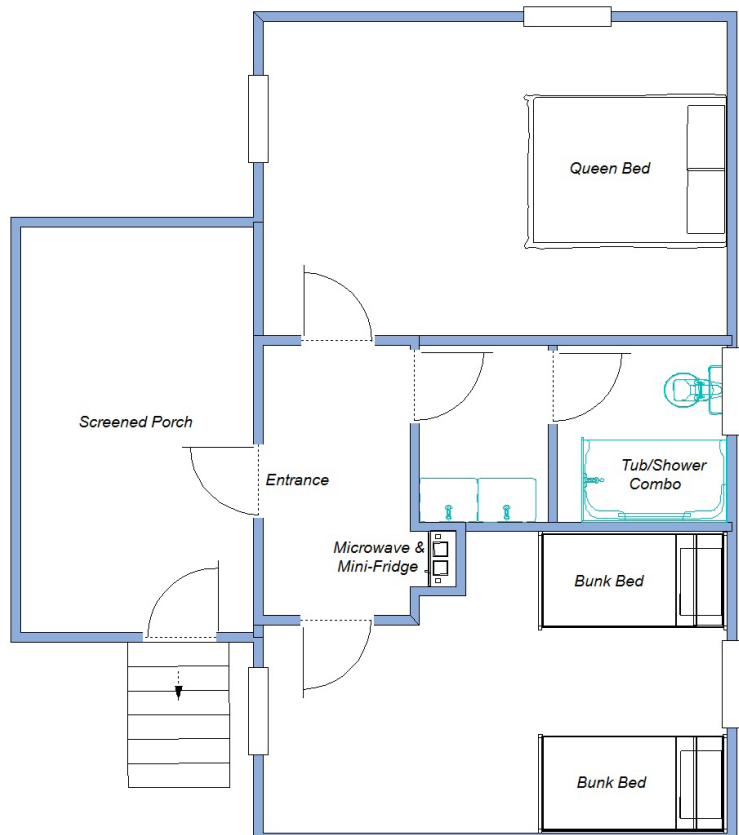
Approximately 519 square feet



Unit B



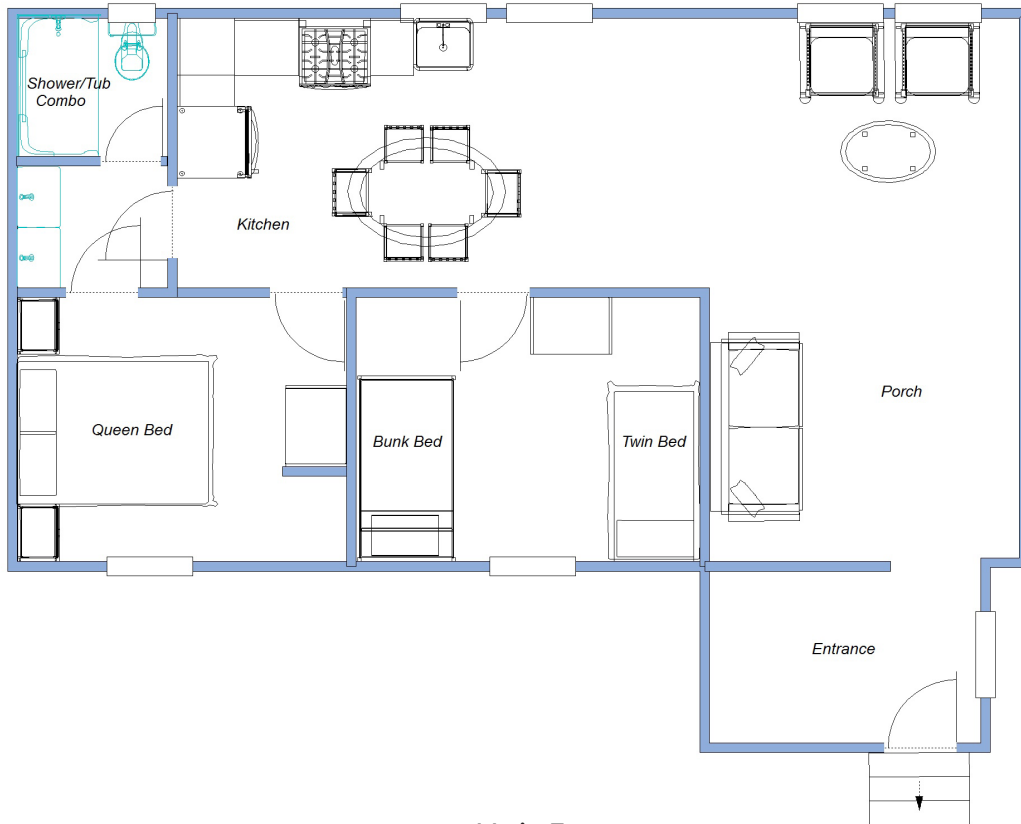
Unit C



CHEROKEE

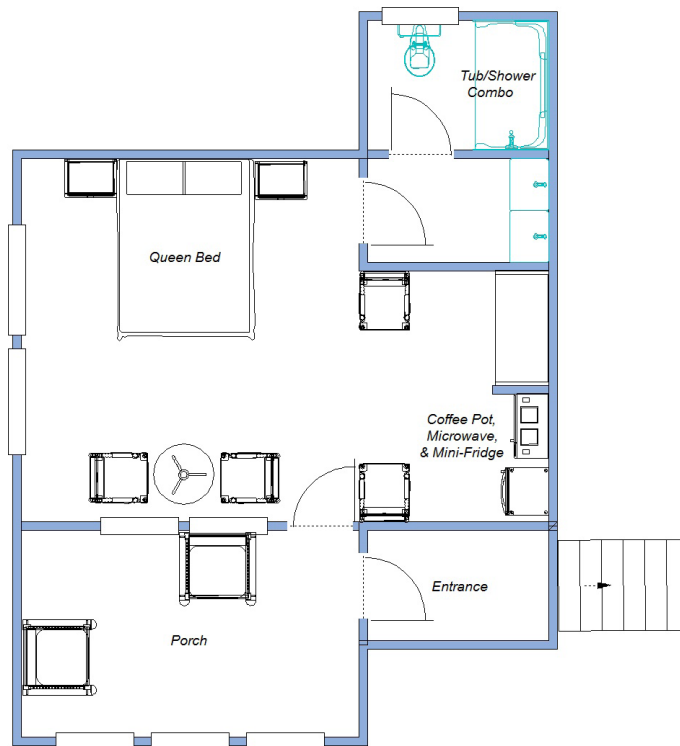
Unit D

Approximately 665 square feet



Unit E

Approximately 383 square feet



CHEROKEE

Unit F

Approximately 875 square feet

