

CHICKASAW

beachfront



🏠 Longhouse; 4 one-room units

📍 Located just off the beach between Oneida and Onondaga

♿ Units 1 & 2: Walk in shower
Units 3 & 4: Tub/shower combo

✚ Porch, and mini fridge

🚫 No firepits

♿ Units 1 & 2 are handicap accessible and have a handicap accessible shower (wheelchair ramp next to unit 1)

Beds & Capacity by Unit

Unit 3: King bed can be converted to 2 twin beds upon prior notice.

	Unit #	1	2	3	4
Beds	Twin				
	Bunk				
	Double				
	Queen	1	1		1
	King			1	
Capacity	Minimum	NA	NA	NA	NA
	Normal	2	2	2	2
	Maximum	2	2	2	2

Summer 2019 Pricing

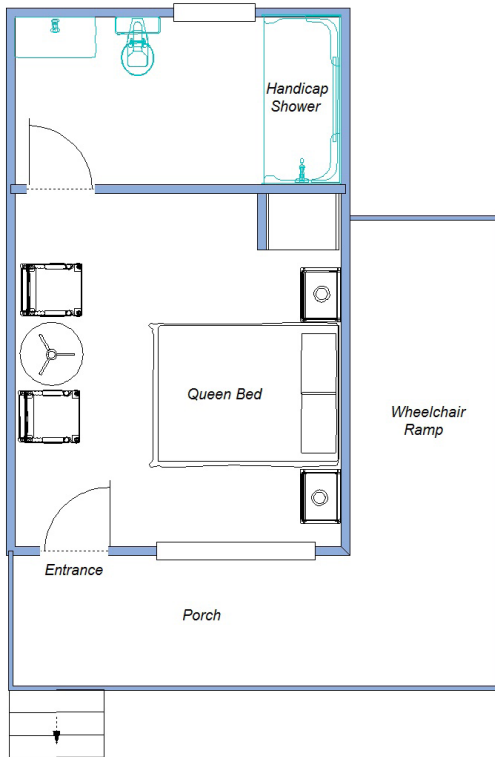
Contact Registrar for single occupancy rates.

Adult	7 - 13 yr old	1 - 6 yr old
\$936.00	\$437.95	\$93.18

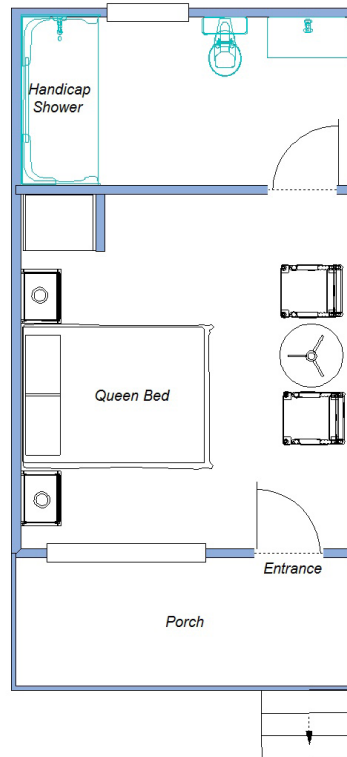
CHICKASAW

Each unit is approximately 234 square feet

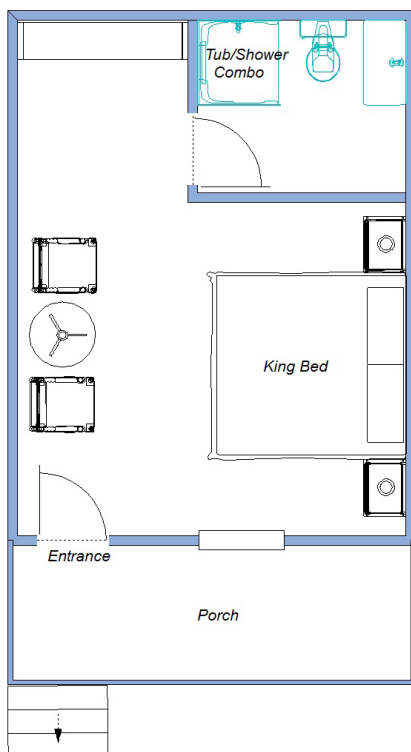
Unit 1



Unit 2



Unit 3



Unit 4

