

ISLOTTA

lakeside



🏠 9 Cabins; A, E, F, & G: 3 rooms,
B, D, & J: 2 rooms, C & H: 1 room

📍 Located along the lake near the point

🚿 A, B, C, E, F, G, & F: Tub/shower combo
C, D, H, & J: Shower

✚ Units A, E, & F are efficiencies including a full kitchen with stove, microwave, refrigerator, and toaster oven; Unit B has a screened in porch

🔥 A, B, D, E, F, G, H, & J have fire pits

♿ No handicap rooms

Beds & Capacity by Unit

Units E: 2 twin beds can be converted into a king bed upon prior notice.

	Unit	A	B	C	D	E	F	G	H	J
Beds	Twin	2	1		2	2	2		1	
	Bunk		1					1		1
	Double	1				1	1	1		
	Queen	1	1	1	1	1	1	1	1	1
	King									
Capacity	Minimum	4	3	NA	3	4	4	4	2	2
	Unit G: 2 Adult Rates Included in Minimum									
	Normal	6	5	2	4	6	6	6	3	4
	Maximum	8	6	3	6	8	8	8	4	5

Summer 2019 Pricing

Efficiency Unit A, E, & F: Includes maid service but NO MEALS. Optional meal plans in either dining room available. All non-efficiency units have meals on the Hill. Gratuities for Housekeepers not included.

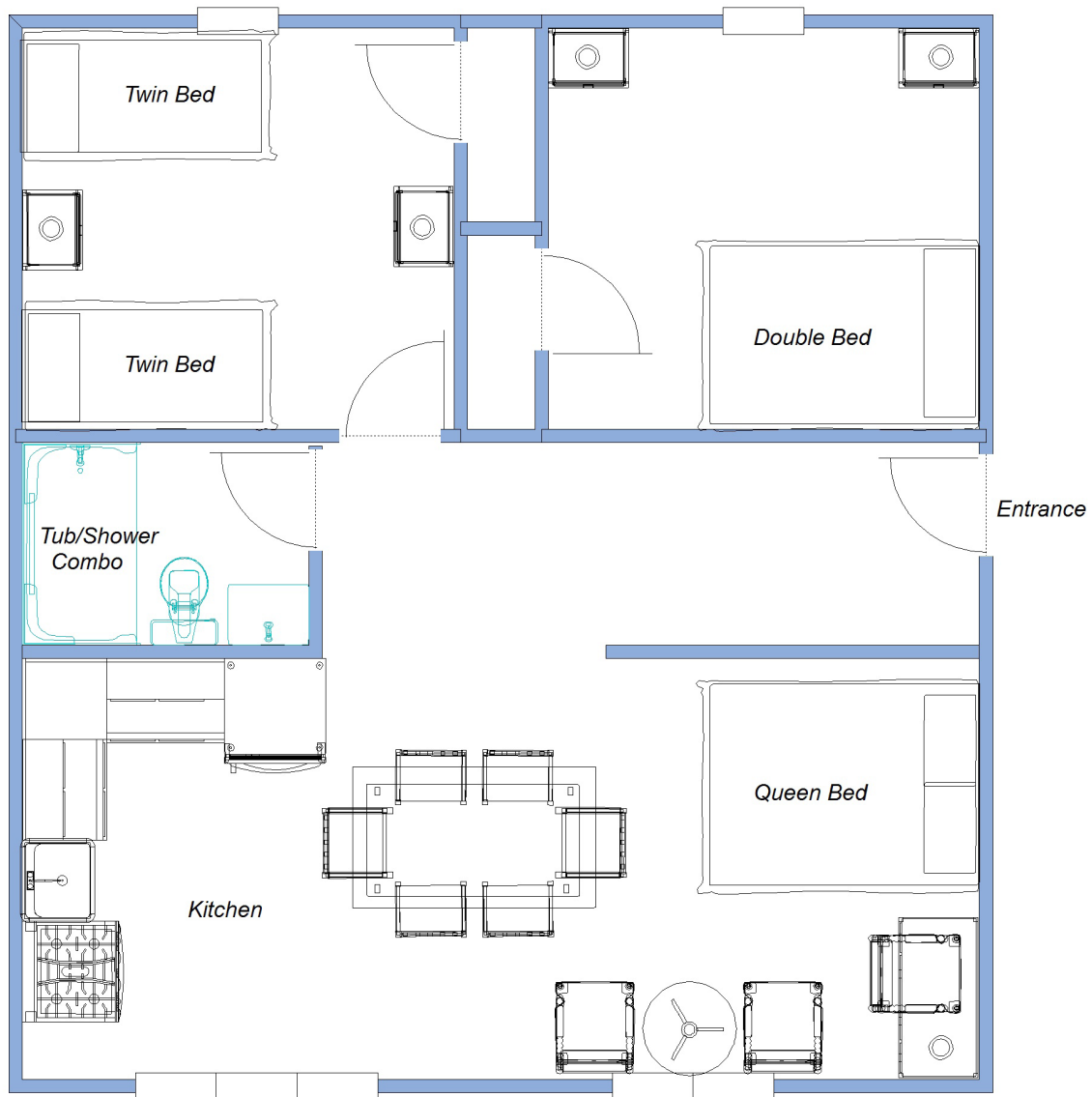
Unit C: Contact Registrar for single occupancy rates.

Units A, B, D, E, F, G, H, & J: No single occupancy.

	Adult	7 - 13 yr old	1 - 6 yr old	
B,D,G,H & J	\$996.00	\$455.95	\$102.18	
C	\$912.00	\$430.75	\$89.58	
A, E, & F	\$2,568.00 per week		\$174.00 per week, per person over 6 occupants	

ISLOTTA

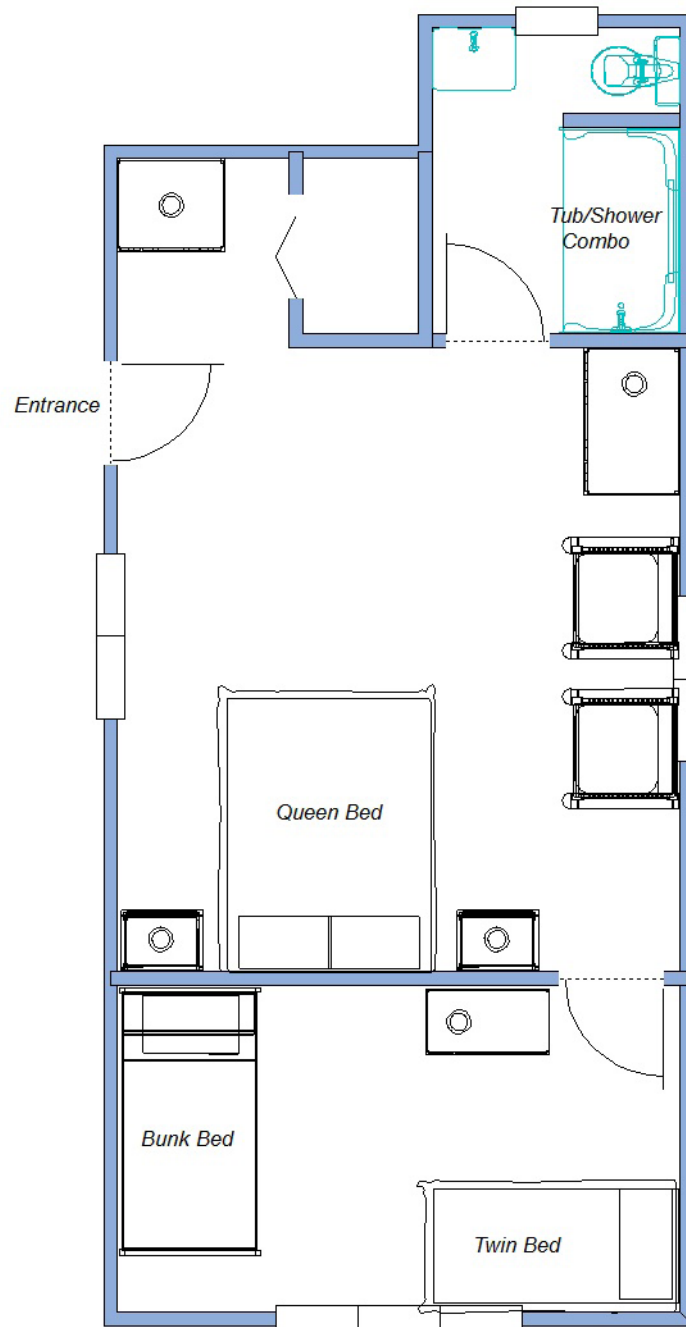
Unit A
Approximately 610 square feet



Lake Pleasant

ISLOTTA

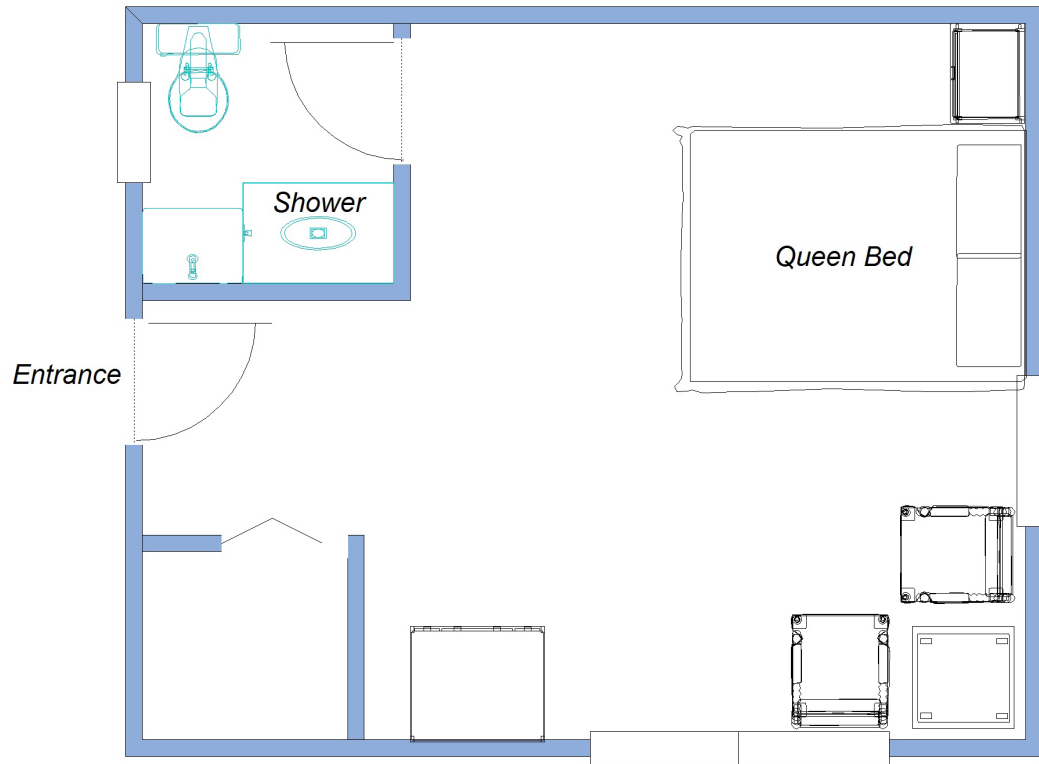
Unit B



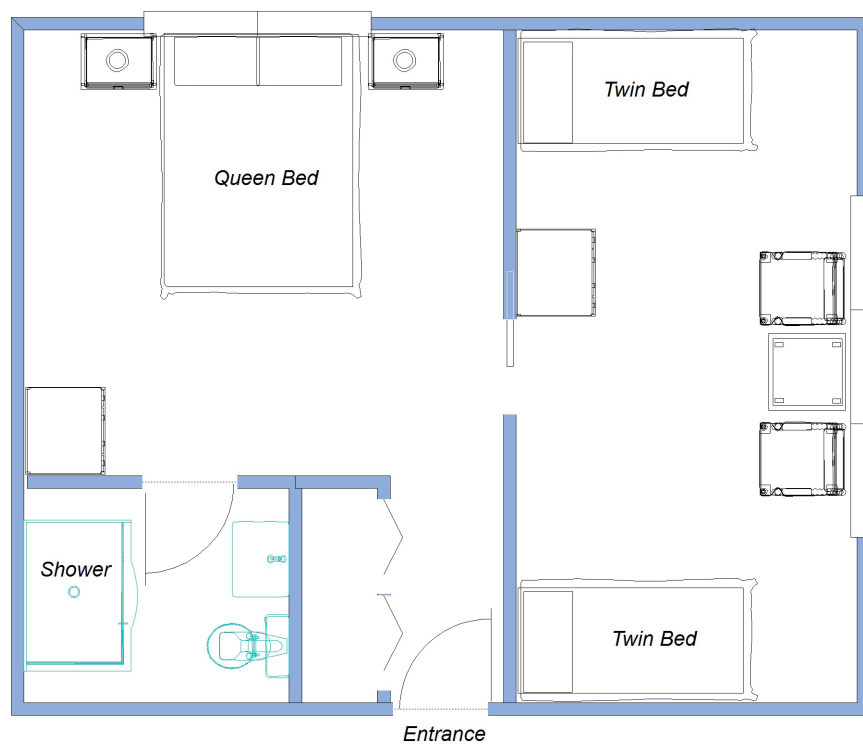
Lake Pleasant

ISLOTTA

Unit C



Unit D



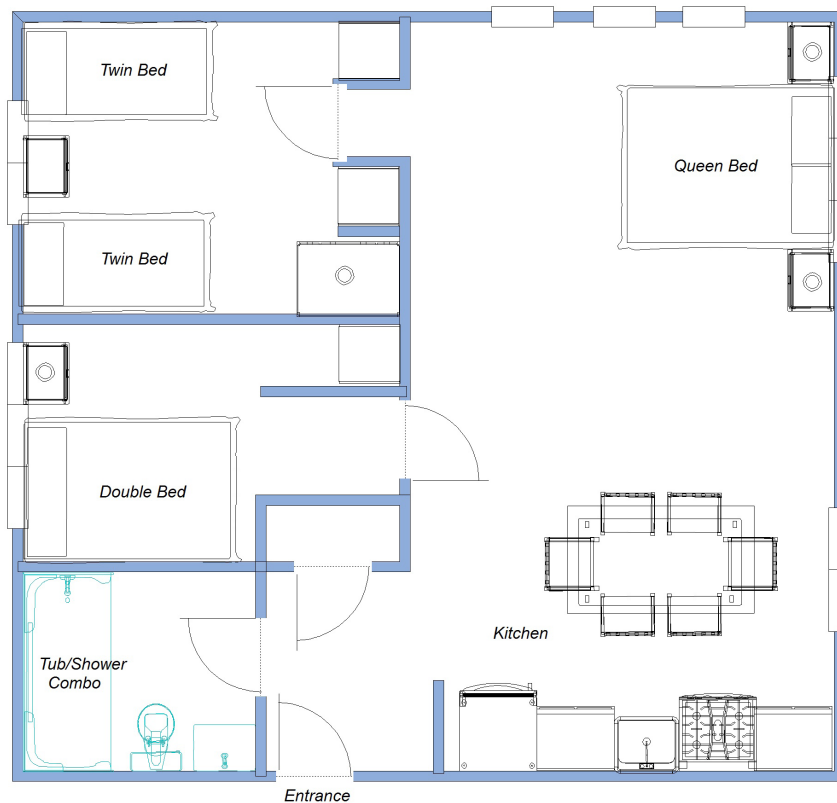
ISLOTTA

Unit E



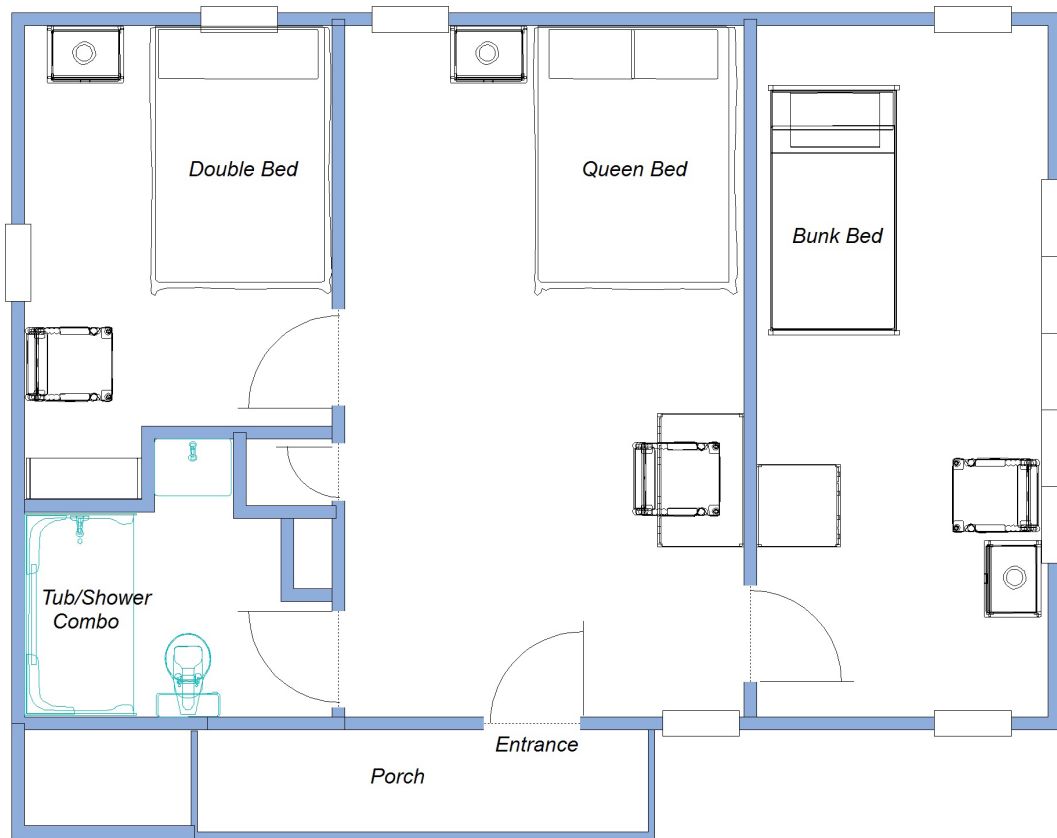
Unit F

Approximately 626 square feet

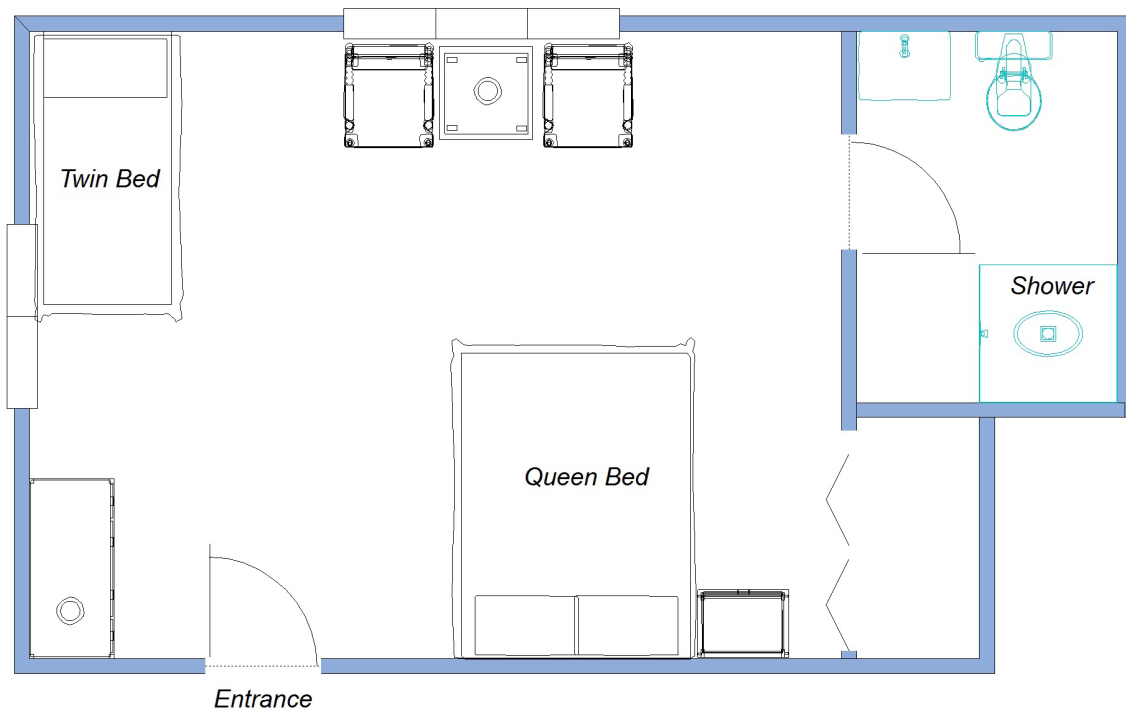


ISLOTTA

Unit G
Approximately 490 square feet



Unit H



ISLOTTA

Unit J
Approximately 368 square feet

