

ONEIDA

beachfront



- 🏠 Longhouse; 10 one-room units
- 📍 Located on the beach between the Tee Pee and Onondaga
- 🚻 Bathroom with tub/shower combo

- ✚ Porch and mini fridge
- 🔥 2, 4, 6, 7, 8, 9, & 10 have fire pits
- ♿ No handicap rooms

Beds & Capacity by Unit

Units 9 & 10: Smaller than rooms 1 - 8
Rooms 1/2, 3/4, 5/6, 7/8, & 9/10 connect

	Unit #	1	2	3	4	5	6	7	8	9	10
Beds	Twin	1		1		1		1			
	Bunk										
	Double		2		2		2		2		
	Queen	1		1		1		1		1	1
	King										
Capacity	Minimum	2	2	2	2	2	2	2	2	NA	NA
	Normal	3	4	3	4	3	4	3	4	2	2
	Maximum	4	5	4	5	4	5	4	5	2	2

Summer 2019 Pricing

Units 9 & 10: Contact Registrar for single occupancy rates.
Units 1 - 8: No single occupancy

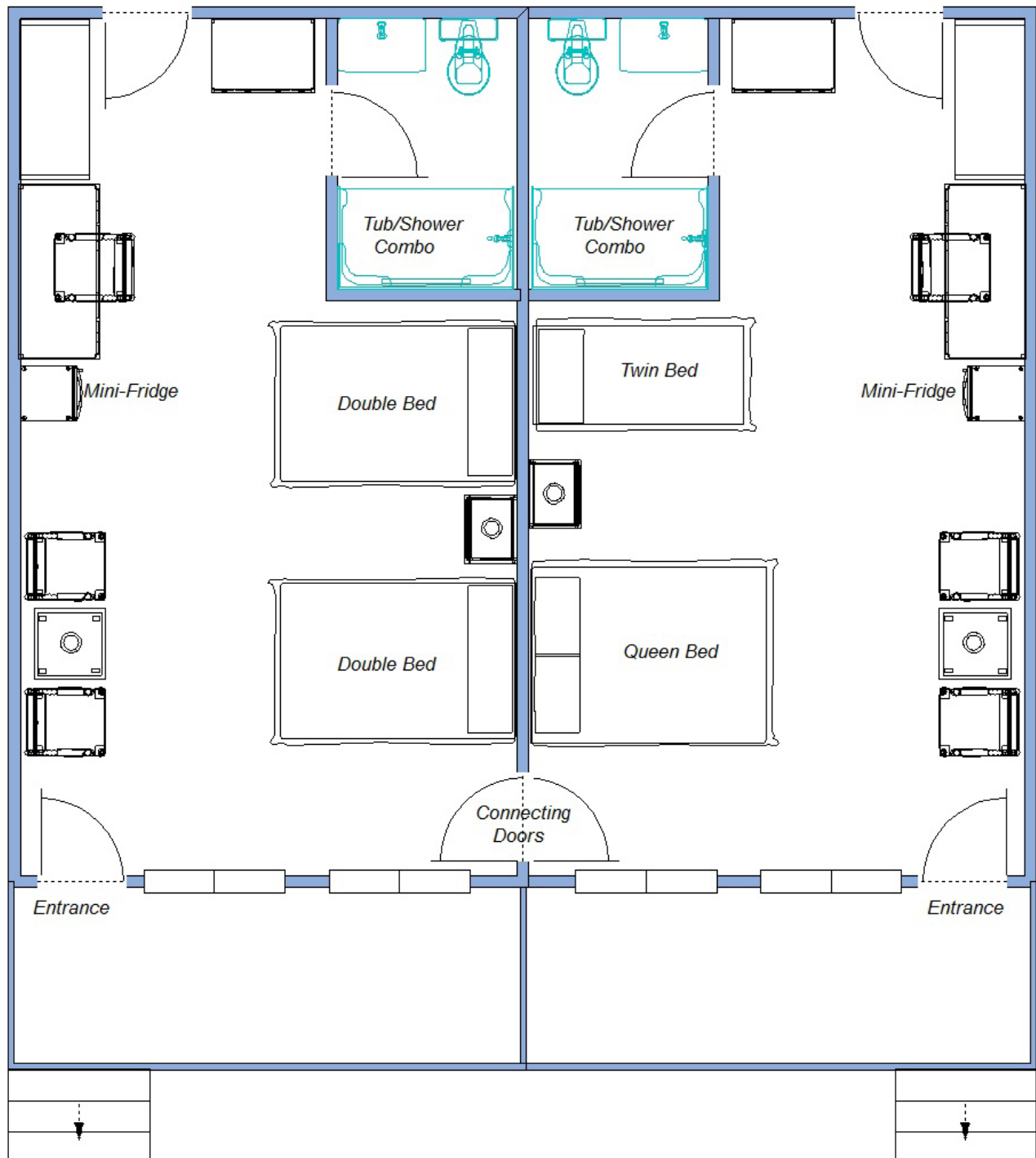
Adult	7 - 13 yr old	1 - 6 yr old
\$1,008.00	\$459.55	\$103.98

ONEIDA

Each unit is approximately 340 square feet

Units 2, 6, & 8

Units 1, 3, & 7



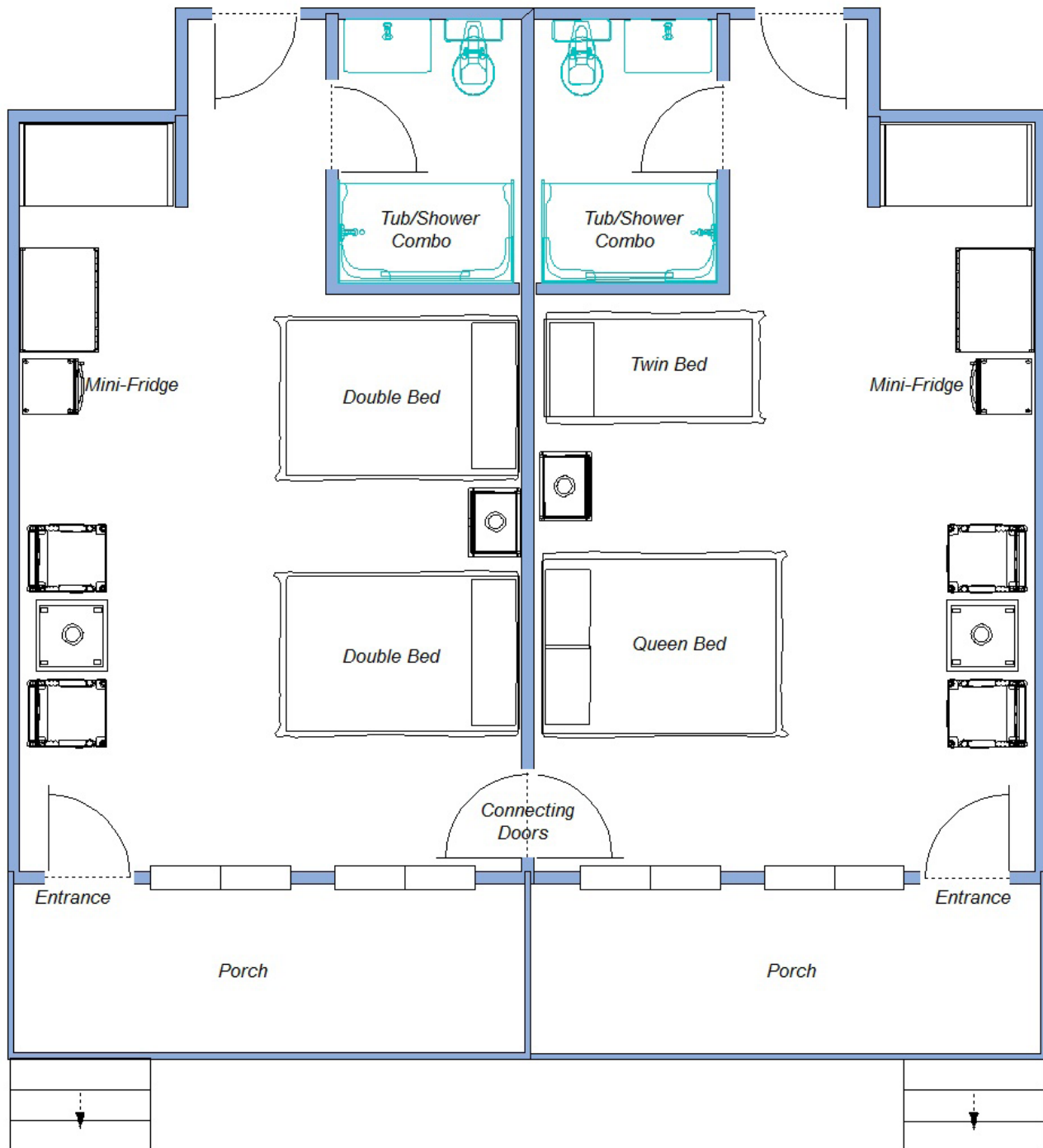
Lake Pleasant

ONEIDA

Each unit is approximately 340 square feet

Units 4

Units 5



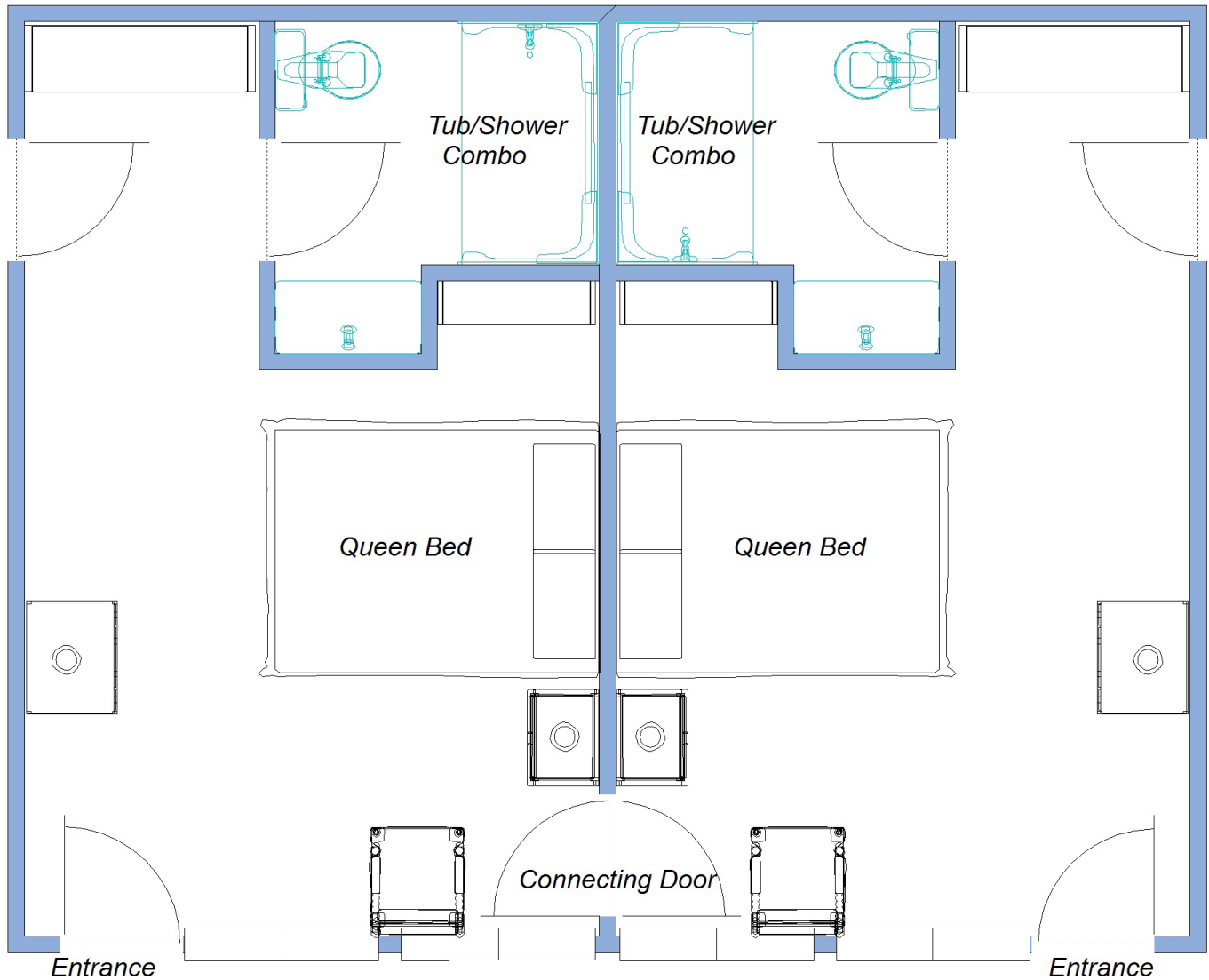
Lake Pleasant

ONEIDA

Each unit is approximately 223 square feet

Unit 10

Unit 9



Lake Pleasant