

CHIPPEWA *lakeside*



↑ 8 Cabins; A, B, C, G, & H: 2 rooms,
D: 1 room, E & F: 3 rooms
Unit E: 2nd floor unit

🕒 Located along the lake near the point

🚻 Bathroom with tub/shower combo,
Unit A: Bathroom with shower only

✚ Units C, E, G, & H are efficiencies including a
full kitchen with stove, microwave, refrigerator,
and toaster oven

🔥 All units have fire pits

♿ No handicap rooms

Beds & Capacity by Unit

Units C, F, G, & H: 2 twin beds can be converted into a king bed upon prior notice.
Unit D: King bed can be converted into 2 twin beds upon prior notice.

| | Unit | A | B | C | D | E | F | G | H |
|----------|---------|---|---|---|----|---|---|---|---|
| Beds | Twin | 1 | 2 | 3 | | 1 | 3 | 2 | 2 |
| | Bunk | | | | | 1 | | | |
| | Double | 1 | | 1 | | 2 | 2 | 1 | |
| | Queen | | | | | | | | 1 |
| | King | | 1 | | 1 | | | | |
| Capacity | Minimum | 2 | 2 | 3 | NA | 4 | 5 | 3 | 3 |
| | Normal | 3 | 4 | 5 | 2 | 7 | 7 | 4 | 4 |
| | Maximum | 4 | 5 | 5 | 3 | 8 | 7 | 5 | 5 |

Summer 2019 Pricing

Efficiency Units C, G, H, & E: Includes maid service but NO MEALS. Optional meal plans in either dining room available. All non-efficiency units have meals on the Hill. Gratuities for Housekeepers not included.

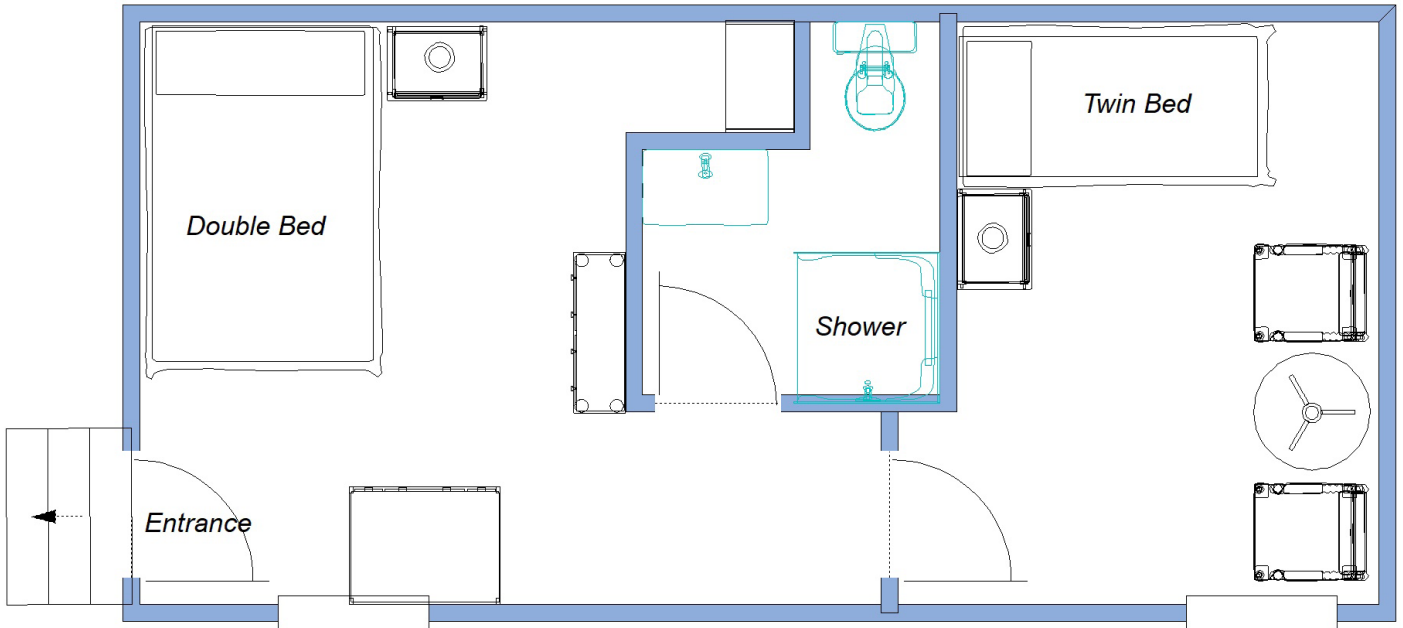
Unit D: Contact Registrar for single occupancy rates.

Units A, B, C, E, F, G, & H: No single occupancy.

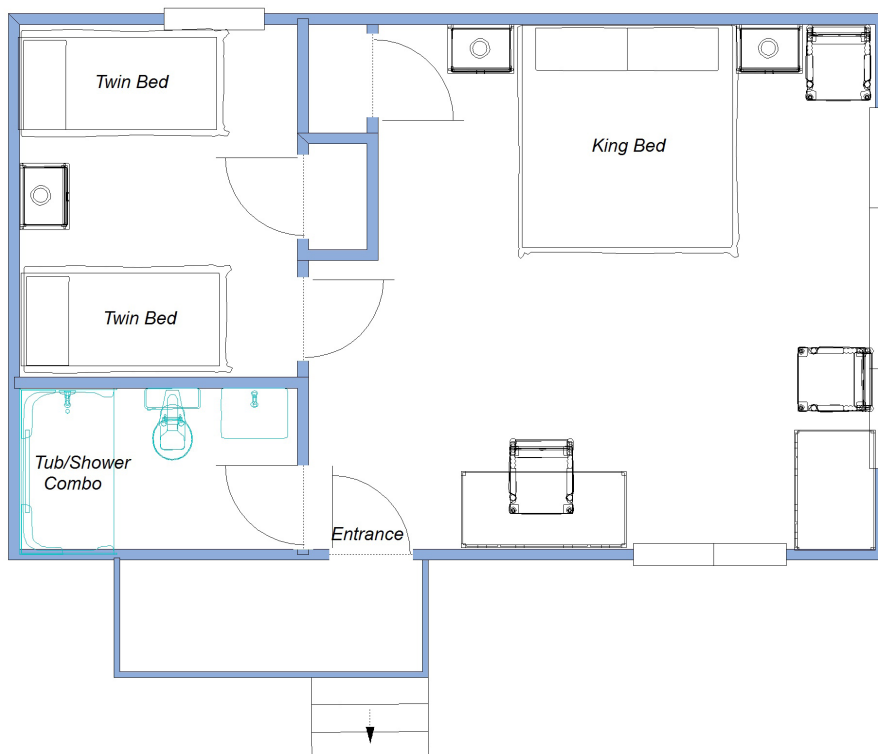
| | Adult | 7 - 13 yr old | 1 -7 yr old | |
|---|---------------------|---------------|--|--|
| A,B,D,F | \$996.00 | \$455.95 | \$102.18 | |
| C,G,H | \$1,851.00 per week | | \$174.00 per week, per person over 4 occupants | |
| Unit C does not require additional fee for a 5th occupant | | | | |
| E | \$2,568.00 per week | | \$174.00 per week, per person over 7 occupants | |

CHIPPEWA

Unit A
Approximately 238 square feet



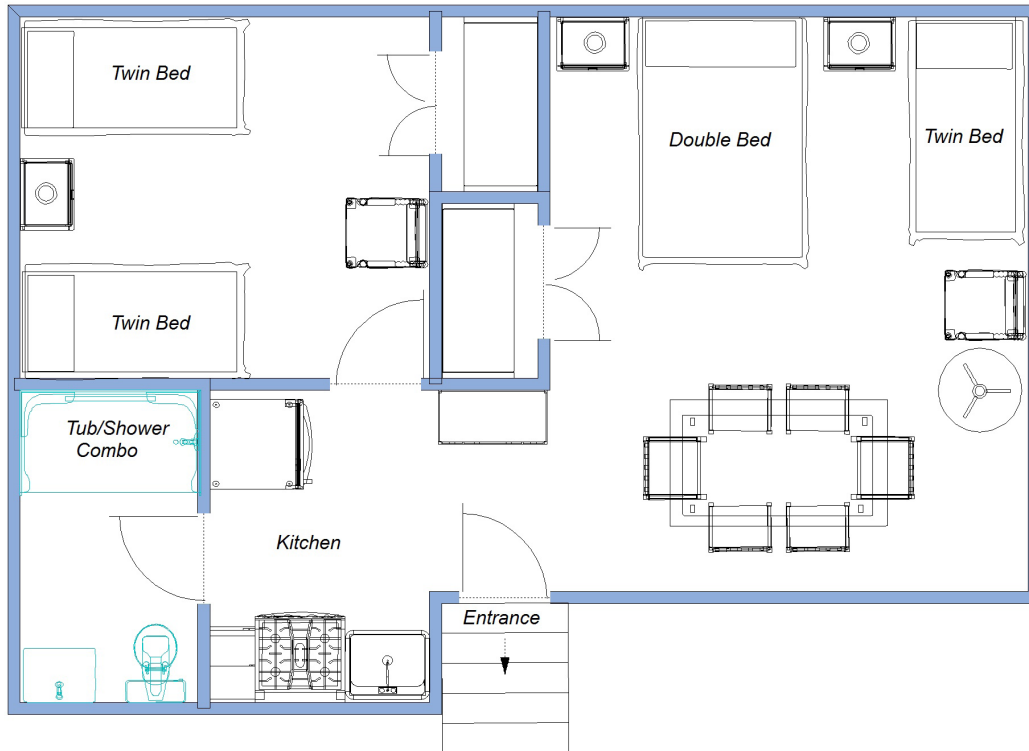
Unit B
Approximately 412 square feet



CHIPPEWA

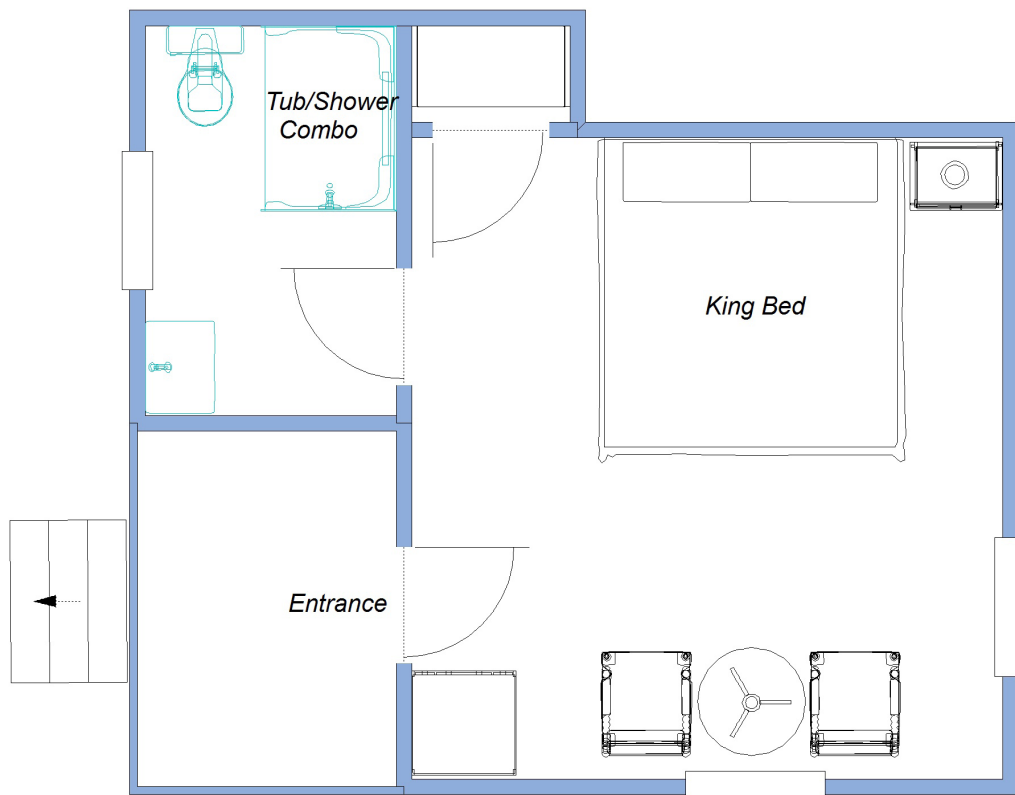
Unit C

Approximately 447 square feet



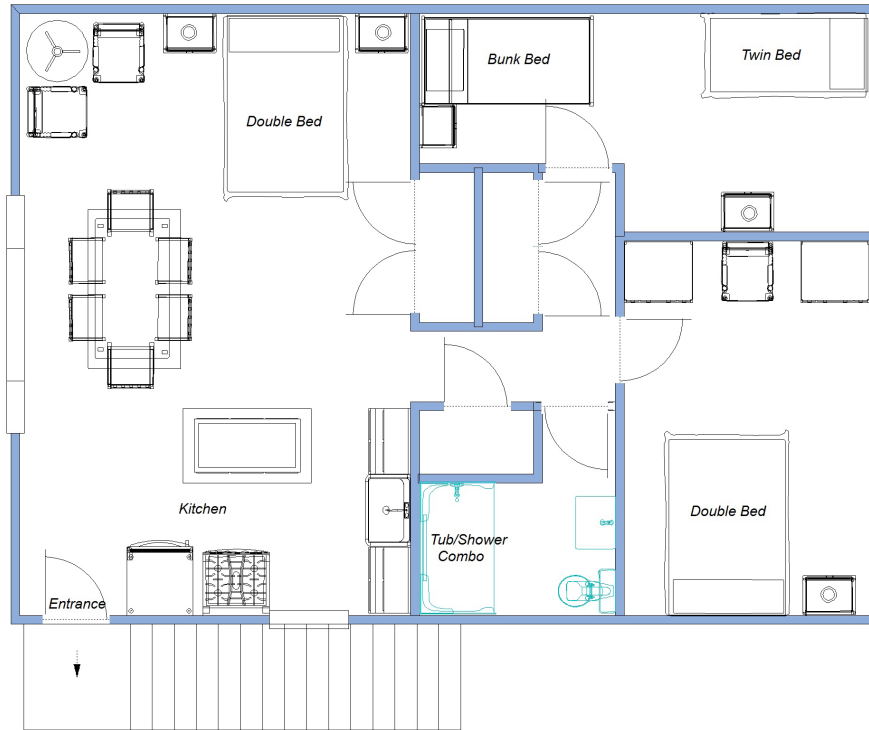
Unit D

Approximately 222 square feet

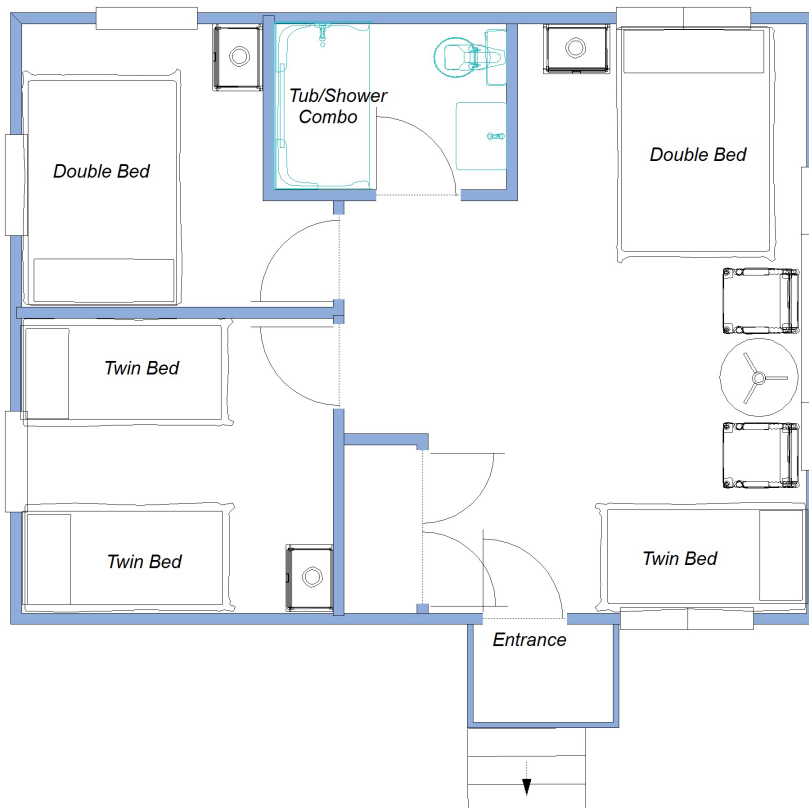


CHIPPEWA

Unit E: Upstairs
Approximately 730 square feet



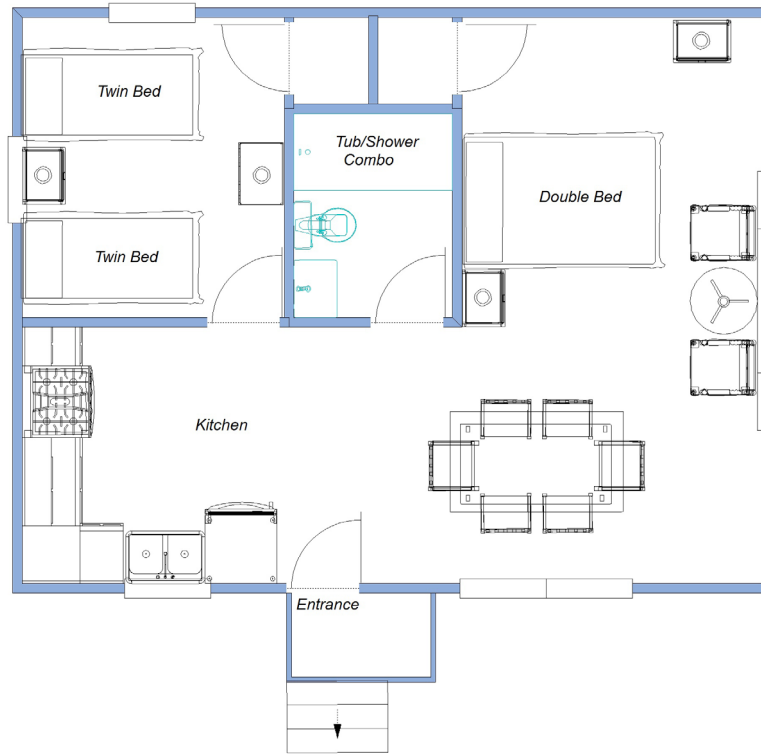
Unit F
Approximately 410 square feet



CHIPPEWA

Unit G

Approximately 500 square feet



Unit H

Approximately 500 square feet

