

An A-Z of Grange-over-Sands 19<sup>th</sup> and early 20<sup>th</sup> century worthies, the people who were involved in its development.

Reasons for researching this section and what has been investigated

Who were the people who helped to shape Grange-over-Sands? The following is a brief biography of people who served as School Trustees, Local Board members or Grange Councillors for random dates between 1874 to 1906. The lists came from Grange Red Books. Other people have been added as their importance has been recognised.

Initially I searched census details to find the person and if I could easily find any thing else out about them from other sources I had readily available I have added that information. The list was started to satisfy my curiosity as names reoccurred and I realised that though the names were familiar I knew nothing about the person. It is on-going research and the following is only a précis of the information. If you want more information or have information to share with me please contact me. Information from newspapers has not been researched yet

Sources: Grange Red Books; online Census and births marriages and death records; W. E. Swale Grange-over-Sands. The Story of a Gentle Township (1972); Freemason information - [www.furnessmasons.org/?page\\_id=13](http://www.furnessmasons.org/?page_id=13) accessed 12.12.11;

Pat Rowland  
31 Dec 2011

Update

1. John Beckett provided information about Alfred Binyon, Reverend Massie and William Pitt Miller. I have added information from Michael Atkinson's booklet Enlightenment comes to Grange-over-Sands published in 2007 to commemorate the centenary of Grange Lecture Society.

A new section on ladies who had an impact on Grange and district has also been prepared as a separate item.

Pat Rowland  
2 January 2013

2. Pictures from Furness Year Book and information about Dr R H Beardsley, Rev J W Burman, Father Langtree , Rev Father Swarbrick and Rev G W Thompson added.

Pat Rowland  
21 March 2013

## Historical Background to establishment of services in Grange

Grange National School was built in 1863 and its Managers were drawn from St Paul's Church and the Community. A separate article has been written about schools in Grange that includes information about this school.

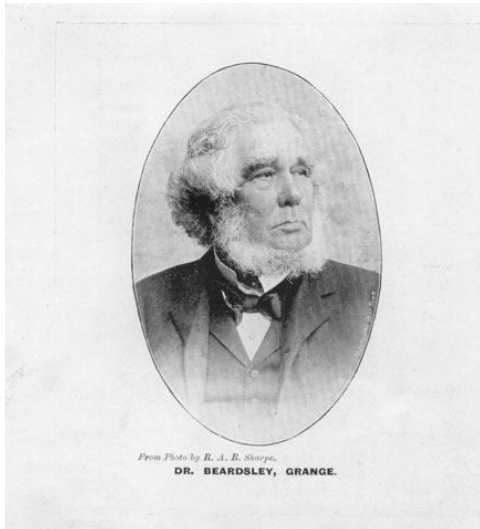
In 1874 a Local Board was created primarily to oversee the town's development and to organise a proper water supply for its residents. The Local Board minutes from this period give details of the Board's increasing intervention in Grange's development. The first meeting of the Local Board took place at the Grange Hotel in October 1874. Those present were Thomas Westwood, Thomas Rigg, James Simpson Young, Richard Tinkler, William Mossop, Marcellus Thompson, William Stewart, Thomas Jopson and Dr Amos Beardsley. Each had declared an estate owned to the value of £500. (CPLHS website Village histories - Grange)

Grange Urban District Council came into existence in 1894 and replaced the Local Board.

### **Grange Worthies (male)**

**Rev J P Airey** – Grange School Trustee 1903. ?

**Dr Amos Beardsley** – Member of Grange Local Board 1874. Trustee Grange School 1882. Lived at Bay Villa, Grange-over-Sands from 1861 census – general practitioner; born 1822 Heanor, Derbyshire. Died 1900 and was buried at Field Broughton. 'The distinguished surgeon, physician and friend to the late Duke of Devonshire and medical attendant to the Stanley's of Witherslack Hall.'



**Dr R H Beardsley** – youngest son of Dr Amos Beardsley born in 1863. Educated at Giggleswick School and Edinburgh and Glasgow Universities. Married Margaret Waddington in 1892 and continued to live at Bay Villa following his father's death. 1911 census records that they had 2 children but one died before 1911.



**Alfred Binyon** was born in Manchester in 1800, but he already had a family connection with this area as his grandparents Benjamin Busby Binyon and Ruth Wakefield were married in the Friends Meeting House, Kendal, in 1760. In 1828, following his marriage to Lucy Hoyle, he was made a partner in his father-in-law's calico printing firm, Thomas Hoyle & Sons, of Mayfield Printworks, Manchester. After being heavily involved with the firm for the next twenty years or so, he acquired a small estate near Grange-over-Sands, possibly from his half 2<sup>nd</sup> cousin John Wakefield of Sedgwick, who owned 150 acres of Eggerslack Woods. On the 19<sup>th</sup> May 1853 Alfred laid the foundation stone of Merlewood, which had been designed for him by George Webster, then living in retirement at Eller How, Lindale. In 1854 he funded the installation of a heating system at St Paul's Church, Grange, after the congregation complained of being cold during the previous winter. Alfred was not able to enjoy his new home, greenhouses and gardens for long, however, as he died from heart disease on 21<sup>st</sup> August 1856, and is buried in the churchyard at St Paul's Church, Lindale. (J Beckett)

**Samuel Broadbent** – Councillor Grange UDC 1905, 1906. Grange School Trustee 1906. Living at Sea View 1901 census – fish, game and poultry dealer; born 1867 Bridgenorth, Salop. Died 1945

**Arthur John Brogden** – Trustee Grange School 1882. Lived at Yewbarrow Lodge in 1877 ([www.furnessmasons.org/?page\\_id=13](http://www.furnessmasons.org/?page_id=13) accessed 12/12/11); founder of Grange-over-Sands Freemason Lodge in 1877, resigned in 1882 as going to be living out of area. 1882 Grange School Trustee. Born 1855 in Ulverston, son of John (junior) and Ellen Brogden. 1881 census shows him living in Hereford Square, Kensington, London. Died 1885.

**Alexander Brogden** – Trustee Grange School 1882. Lived at Holme Island in 1870s; Second son of John Brogden, railway contractor and coalmine owner. Liberal MP for Wednesbury 1868-1885. Bankrupt 1884 by failure of family business. Freemason 1877-1879. Born in Manchester 1825; died 1892.

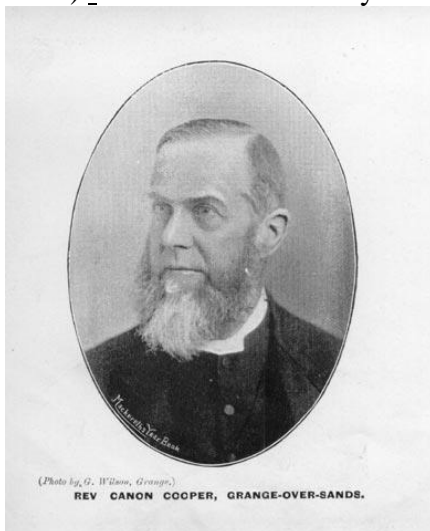
**Thomas Brown** – Member of Grange Local Board 1882; 1882 school manager; probably Thomas Brown joiner and lodging house keeper of Bay View Terrace, Grange but could be Thomas Brown, farmer of Cart Lane.

**Rev J W Burman** – Congregational Minister at Grange. No further details known. The Congregational Church was built in 1894.



**John Chippendale** – Member of Grange Local Board 1882; Councillor Grange UDC 1899, 1901, 1905, 1906; lived at 2 Eggerslack Terrace 1871 census – plasterer master employing 2 men; born 1840 Waddington, Yorkshire. Died 1921.

**Cannon Thomas Cooper** - vicar from 1888-1907 St Paul's, Grange. First visited Grange in 1858 where he met and married Ann Eliza Arkwright, the younger daughter of Richard Arkwright of Preston, at St Paul's Grange-over-Sands on 26 June 1861. She was the niece of his immediate predecessor Rev Canon Smith. They had at least eleven children. Mrs Cooper died in October 1902. His ministry marked a period of consolidation at the church. The vestry was enlarged in 1905 and the Fell Mission Church was built in 1907 and one of his final services was held there. He introduced the surpliced choir. The rebuilding and enlargement of the church was an aim and when he retired £1000 had been accumulated for the project (Grange-over-Sands Parish Magazine June 1907). He retired to Staveley in Cartmel and died in Newton on 25 January 1911 aged 73.



**Thomas Jopson** – Member of Grange Local Board 1874. Lived at Devonshire House and Post Office 1871 census- postmaster, telegraphist and dealer in fancy goods, and 1881; 1891 and 1901 living on Grange Fell but grocer's assistant in 1891 and fire and life insurance agent 1901; born 1841 Kendal Westmorland. Died 1908.

**John Just** – Member of Grange Local Board 1882; lived at Eggerslack Terrace 1871 census and Belle Isle Terrace 1881 census – retired grocer 1871 and coal merchant 1881; born 1810 at Cartmel. Died 1888.

**The Rev Father Richard T Langtree** – born about 1855 in Preston Lancashire. By 1891, a Roman Catholic Priest, he was living at Hawthorn Terrace, Grange; 1901 he was living at Burton House, Grange and in 1911 he was living at St Charles Kents Bank Road, Grange. He died in 1929. Swale states that he was the first parish priest and is remembered for his magnificent rose garden which stretched over the site of the school playground (now Kents Bank Road car park). He was a parish priest for 46 years. St Charles RC Church was built in 1884.



**Dr Richard Lowther** – Councillor Grange UDC 1899, 1901; Grange School Trustee 1903,1906. Lived at Fernleigh, Fernleigh Road 1891 census - general practitioner; born 1847 Muker, Swaledale, Yorkshire. Moved to Grange from Cartmel in 1881 and his garden was one of the richest horticulturally. Died 1916.



**Anthony Mason** - Member of Grange Local Board 1882; 1882 school manager; living at Burners Close 1881 census; auctioneer. Born 1827 in Dent, Yorkshire. Died 1888.

**Revd Edward Massie** was born in 1806, the 3<sup>rd</sup> son of Revd Richard Massie of St Timothy's, Chester. He graduated BA from Wadham College, Oxford, in 1830, was ordained in 1840, and became a chaplain at Durham University from 1841-1845. After marrying Sophia Thornycroft in 1845, he became vicar of St James', Gawsworth, 2 miles SW of Macclesfield, where he remained for a quarter of a century. After his wife died in 1872 he retired to Grange, living first at Sandyfield (now the Hampsfell House Hotel) before moving across Hampsfield Road into Nutwood, where he was joined as his housekeeper by his niece by marriage Henrietta Arkwright. Edward was very active in his retirement: he conducted services at the Parish Church, and in 1877 was reported as preaching at Cartmel Fell; in 1889 he established the fund for the 'Grange Sick Nurse', and was much involved with the Working Men's Institute where in the same year he generously provided a

library of 500 volumes and a reading room with newspapers and “good” magazines. He became president of the Institute in 1891. He died on 21<sup>st</sup> January 1893, and his body was taken by train to Gawsorth to be buried with his wife. At the time of the burial a short service was held in Grange Church, and for the hour between 2-3pm the shops in Grange were closed as a token of widespread regret and genuine respect. ( J Beckett)

**William Pitt Miller** was the nephew of Eliza Horrocks (*q.v.*). After the death of Eliza in 1872 he purchased Merlewood from her trustees, and moved in with his wife and young son, and when three more children were born he extended the property by building a tower to provide additional bedrooms. In 1881 the census recorded that there were nine servants living in the house, the coachman and his family in the coachhouse, the gardener and his family in the lodge, and the butler at The Slack. Like his aunt, W P Miller was actively involved with events in both Lindale and Grange: the Jubilee celebrations in Lindale in 1887; the establishment of a library at the Working Men’s Institute in Grange in 1889 (see also Edward Massie). In 1892 he took a great interest in the exploration of a cave in the limestone cliff below Merlewood, the results of which were published in the Transactions of the Lancashire & Cheshire Antiquarian Society, of which he was a member. The Miller family spent the winters at their other residence at Thistleton near Kirkham, and it was there in November 1893 that W P Miller died very suddenly from an attack of pneumonia. He was 44 and left a widow and six children. At that time the Merlewood estate comprised 102 acres of land and 14 acres of wood, part of Eggerslack Wood. (J Beckett)

**William R Maude** - Trustee Grange School 1882.; possibly William Edward Maude of Blawith (adjoining Maude Mansion and Blawith Farm Broughton East ie Grange Village) in 1881 census – owner and occupier of 200 acres employing 3 men and 2 boys; born 1819 in Blackburn.

**James Henry Midgley** – Councillor Grange UDC 1899, 1901; lived at Berners Close which he built in about 1882 – landscape artist and magistrate; born 1854 Saffron Walden, Essex. Quaker. Left Grange by 1911; died 1929.

**John Mossop** – Member of Grange Local Board 1882; brother of William, lived at East View, Birch Terrace from 1891 census – grocer and confectioner in 1871 census; born 1841 Cartmel ; died 1899. Very involved in establishing Grange Freemasons in 1877. W and J Mossop's grocers, confectioners and bakers was set up in 1861. They ground their own flour at Lindale.

**William Mossop** – Member of Grange Local Board 1874; Councillor Grange UDC 1905, 1906. Grange School Trustee 1903. Brother of John, lived at Belle Mont Villa, Grange Fell Road, 1871 census, Sunnyside Kents Bank Road, 1881 census onward – grocer, baker, confectioner and miller in 1871 census (school teacher 1861 census; lodging house keeper and grocer 1871 census); born 1837 Cartmel. Died 1916.

**Albert Nelson** – Councillor Grange UDC 1901, 1905, 1906; Lived at Sunnybrow, Charney Road 1901 census, prior to that census he had lived in Kendal – joiner and builder; born 1858 Kendal. Died 1937.

**Robert Parkinson** - 1899 Councillor Grange UDC; lived at Yewbarrow 1901 census – analytical pharmaceutical chemist partly retired; born in Bradford 1831. Two deaths in area with this name 1911 and 1913.

**George Podmore** - Grange School Trustee 1901, 1903, 1906. Headmaster of Charney Hall Prep School and living there 1891-1911 census. Born 1854 at Elstree, Herts. Mr Podmore started his school in 1882 on Eden Mount and built Charney Hall in 1888. He was churchwarden at St Paul’s Church 1903-4. Died 1933.

**Austin T Porritt** - Harold Porritt's(qv) cousin. Generous benefactor who provided money for extending the gardens and parks in Grange. He lived at Yewbarrow Lodge when it was destroyed by bombing in 1941. Married to Annie their son Richard was an MP and was the first officer to be killed in action in May 1940.

**Harold Porritt** - Councillor Grange UDC 1901; Chairman Grange UDC 1905, 1906; wealthy director of a textile factory in Helmshore, Haslington, Lancs who came to Grange in 1895. Lived at Netherwood, Rocklands Road 1901 which he had built in 1895 – JP and wool manufacturer; born 1855 Ramsbottom, Lancs. Died 1910. He was one of the town's most generous benefactors: gifts from him extended promenade, paid for tearoom on Prom and bandstand.

**Richard Redhead** – Member of Grange Local Board 1882; Lived at High Farm 1871 census onwards – farmer of 96 acres employing one man (1871). Born 1835 Levens. Died 1905.

**Thomas Rigg** - Member of Grange Local Board 1874. Ran Grange Hotel, Blawith, Grange, built by Furness Railway in 1866, for 40 years until his retirement in 1912. Born 1848 at Windermere and died in 1913. His father ran Riggs Windermere Hotel, built in 1847, opposite the station. He also had carriages and post horses for hire and developed summer coach tours to Lakeside.

**James Rostron Riley** – 1865 or 1866 - 1898 Treasurer and Secretary to Grange School. Listed again in Grange Red Book in 1901 and 1903 as Treasurer. 1866 Trustee of The Institute, with William Henry Wakefield, the site of which was acquired from James Simpson Young by Canon Henry Robert Smith (qv), vicar of Grange. 1866 -1884 church warden at St Paul's, Grange-over-Sands. Lived at Underwood, Fernhill Road which he and his father built in about 1860; family were cotton millers in Preston who had been initially employed then helped by Horrocks family to establish a cotton mill in the early 19<sup>th</sup> century. Had been tenants of Eliza Horrocks (qv) in Preston. Sold Underwood 1900 and lived at Oakdene, Rocklands Road. He married Rose Cooper, sister of Cannon Thomas Cooper who was vicar from 1888-1907 St Paul's, Grange and they had 2 daughters. His sister Alice married James Simpson Young (qv). James was born 1833 in Preston and died in Grange in 1908.

**Rev Canon Henry Robert Smith** – Chairman School Trustees 1882, 1901, 1903, 1906 . 2<sup>nd</sup> Vicar of St Paul's Grange from 1858-1888; born 1822 Preston; died 1896 at Grange. Responsible for the Working Mens' Institute on Main Street built in 1866. He suggested the name Grange-over-Sands to differentiate the town from Grange-in-Borrowdale. Very influential in development of Grange and involved in every aspect of welfare of the town. His son was Henry Eden Smith.

**Henry Eden Smith** –Son of Henry Robert Smith, vicar of St Paul's Grange; born 1865, Grange; lived at Lea, Esplanade in 1901, occupation given as newspaper proprietor. Councillor Grange UDC for 35 years and chairman for many of those years; Grange School Trustee Treasurer 1901 1903, 1906; Chairman of the committee responsible for the building of Victoria Hall which opened in 1900; first president of the Grange-over-Sands Lecture Association formed in 1901; President of Grange Amateur Operatic Society and a leading performer within the Society; choir master at St Paul's for 7 years; trustee of Working Men's Institute; president of Literary and Scientific Society Died 1940.



**William Stewart** - Member of Grange Local Board 1874; Chairman of Grange Local Board 1882. Lived at Methven Terrace 1871 census - lodging house keeper; 1881 San Remo Villa, The Esplanade; 1891 census he was a coal merchant and his wife was a lodging house keeper at San Remo; born 1836 Kirkham, Lancs. Died 1892.

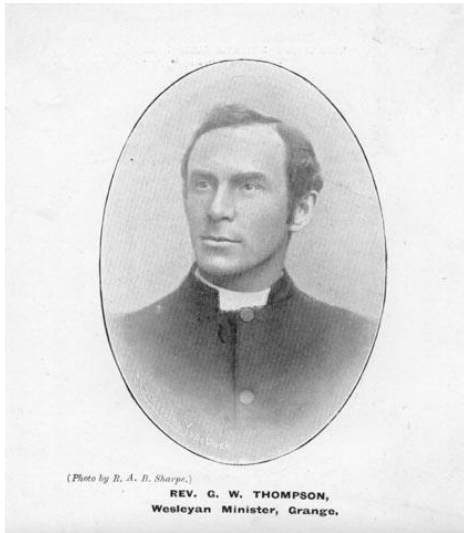
**Rev Father Swarbrick** – died 1899 approx. James swarbrick was born in 1823 in Garstang and in 1881 he was a Roman Catholic Priest at Thurnham. The 1891 census records him as retired Roman Catholic Priest living at Seaholm, Gray Rigg Terrace, Grange.



**Frank Taylor** – Councillor Grange UDC 1899, 1905, 1906; chairman of Grange UDC 1900 ; Grange School Trustee 1906. Living at Inglewood, Kents Bank Road in 1901 census;- solicitor; born in Haslingborough, Lincs 1839. Not sure when died.

**Rev G W Thompson** – Wesleyan Minister, Grange. 1901 census shows him living with the Hankinson family(chemist and druggist) at Summerfield, Grayrigg Terrace, Kents Bank Road. George William Thompson was born in Hull, Yorkshire in 1867. No other information known currently. The Methodist Church opened in 1875.





**Marcellus Thompson** - Member of Grange Local Board 1874 . Lived on Eden Mount 1871 census - marble mason and landowner employing 7 men and 2 boys; born 1817 Kendal. Died 1880 in Kendal district.

**William Till** – Councillor Grange UDC 1905, 1906. Living at Fernleigh Rd 1901 and at Morecambe Bank 1911 – joiner and builder . Born in Kents Bank, 1862. Died 1922.

**Richard Tinkler** - Member of Grange Local Board 1874and 1882. Lived at Rose Villa, Grange in 1871 census - black and white smith employing 1 man; born 1842 Langwarthby, Cumberland. Not sure when died.

**William G M Townley** – Grange School Trustee 1901. Councillor Grange UDC 1905, 1906. Living at Hardcragg, Grange 1871, 1901 and 1911 – living on own means. Born in Grange 1870. Died 1929.

**Rev George Vickars-Gaskell** – Born 1857 in Yorkshire. Vicar of St Paul’s, Grange 1916 to 1934, having been curate from 1898 to 1906 and again from 1910 onwards. Much involved in Grange organisations. Founder secretary Literary and Scientific Society; 20 years a member of Grange UDC of which he spent 6 years as chairman; 1906 he was involved in setting up the fire brigade and was the first captain; 1912 he was involved in bringing electricity to the town; captain of the cricket team and golf club; fellow of Royal Astronomical Society. He died in 1934.



**William Henry Wakefield** – Trustee Grange School 1882. Living at Sedgwick House, Sedgwick 1881 census – banker, magistrate and farmer of 447 acres. Born 1828 in Newton in Cartmel, died 1889. His wife Augusta and daughter Mary moved to Eggerslack, Grange by 1891.

**W Wakefield** - Grange School Trustee 1901, 1903. Unable to identify.

**James Ward** – Grange UDC councillor 1901 – living at Limehurst, Kents Bank Road in 1901 census – limestone quarry owner and merchant; born at Lund, Lancashire in 1849. Not sure when died.

**John West** - 1899 Councillor Grange UDC – living on Grange Fell – bread baker; born in Bradford 1827. In 1881 he had been living at Colton and was a powder works labourer (possibly Black Beck Gunpowder Works). Not sure when died.

**William Westwood** – Councillor Grange UDC 1899, 1901; Grange School Trustee 1901. Brother of Thomas Westwood. Lived at Ingwell House, Main Street from 1871 census – butcher (butcher and farmer 1891). Born 1836 Middleton, Yorks. Died 1904.

**Thomas Westwood** – Member of Grange Local Board 1874 and 1882. Brother of William Westwood. Lived at Crown Hotel 1871 census - farmer and hotel keeper. Born 1839 Middleton Yorkshire. Very involved in establishing Grange Freemasons in 1877. Died 1898.

**James Simpson Young** – Member of Grange Local Board in 1874. Lived at Abbot Hall, Kents Bank from about 1858 – wealthy industrialist involved in calico printing and coal mine owner who moved to Kents Bank from Salford when he married Alice Riley following the death of his first wife. Born Lennox Town, Stirling, Scotland in 1819 and died in 1879 at Abbot Hall, Kents Bank.. Owned much of the land in Kents Bank and Main Street, Grange and was responsible for leading the development of the land to attract tourists. He also developed property in Arnside and Silverdale. All was sold off following his death but because of economic problems the sales spread over several years. A separate article in the Kents Bank section includes much greater information about Mr Young.



From the Grange Then collection