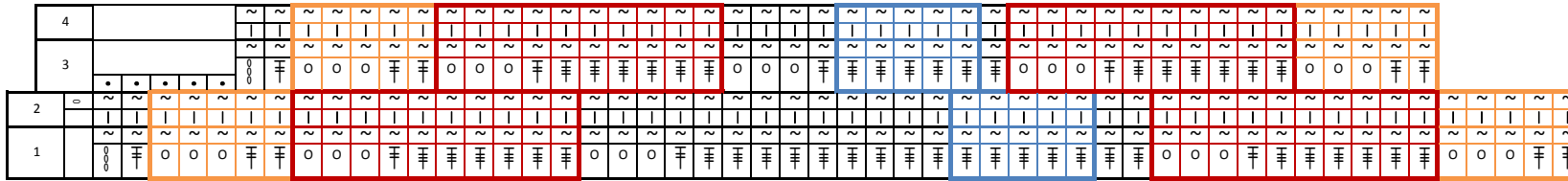
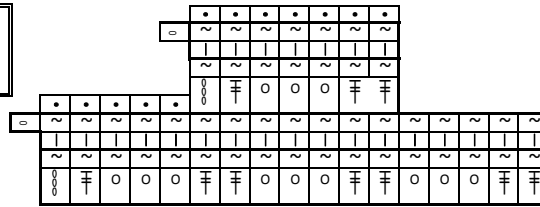


TUNISIAN LATTICE THROW

Closing rows. These are your last 2 pattern repeats



stitch guide		
•	slst	slip stitch
o	ch	chain
l	TSS	tunisian simple stitch
o	YO	yarn over
~	close	normal close
#	TDT	tunisian double treble
#	LTDT	linked tunisian double treble
ooo		chain up 4

How to read this chart

**See written pattern for detailed instructions on how to work the stitches*

***Right handed crocheters - When printing this chart you will want to go into your advanced printer settings and print this as a mirror image*

Once you have reached your desired width you will begin working your decrease rounds.

Work rows 1 and 2 once, repeating the highlighted sections working in pattern.

Repeat rows 3 and 4 reducing in pattern, you will 1st reduce the center solid section, than the checkered portion on the edge followed by the outer lattice edging until you have 4 sets of TDT separated by 3 open spaces.

Work closing row.

TUNISIAN LATTICE THROW



stitch guide		
•	slst	slip stitch
o	ch	chain
	TSS	tunisian simple stitch
o	YO	yarn over
~	close	normal close
≡	TDT	tunisian double treble
≡	LTDT	linked tunisian double treble
o		chain up 4

How to read the chart:

**See written pattern for detailed instructions on how to work the stitches*

***Right handed crocheters - When printing this chart you will want to go into your advanced printer settings and print this as a mirror image*

Work rows 1 and 2 on each additional repeat increase the orange section to add one block to the end of the row until you have 6 pair of TDT bars and 5 open spaces between. **Move onto rows 7 and 8** and work once. Repeat rows 9 & 10 working in pattern increasing the red section until you have 7 solid blocks of LTDT separated by open spaces.

Repeat rows 21 and 22 increasing 1 solid block (blue) in center of pattern until blanket reaches desired width.

On last repeat of rows 21 and 22 do not repeat the grey section. You are now setup to add length to your blanket.

Repeat rows 21 and 22 (working in pattern), omitting grey section, to add width.