



Fenix HL55 Announcement



HL55

Max 900 Lumens



Rugged Trailblazer

*Lightweight and tough , self-contained headlamp
powered by one 18650 battery*

A person is walking away from the camera on a dirt path through a forest at night. The path is brightly lit by a headlamp, creating a strong contrast with the dark surroundings. The trees are tall and thin, with some green leaves visible. The overall scene is dark, with the light from the headlamp illuminating the path and the person's silhouette.

HL55

Max 900 Lumens

The Fenix HL55 headlamp offers four brightness levels plus 900-lumen burst mode and 150-hour runtime from one 18650 battery or two CR123A batteries. Neutral white light means superior definition and penetration in high-humidity environments. A 116-meter carry distance reaches farther while the side switch on the head is all you need for ON/OFF, output selection and burst. With all-metal housing and ANSI rated, the HL55 matches all-season backcountry and cave exploration.



HL55

Max 900 Lumens

- ✦ 900-lumen burst mode
- ✦ Optimum output-to-weight ratio
- ✦ Powered by one 18650 battery
- ✦ All-metal housing
- ✦ Waterproof to IPX-8 standard

A person wearing a red shirt and a red helmet is shown in profile, facing left. They are wearing a headlamp that is emitting a bright beam of light. The background is a dark, rocky cave with some light reflecting off the walls and floor. The overall scene is dimly lit, with the primary light source being the headlamp.

HL55

Max 900 Lumens

900-lumen burst mode

Utilizing Cree XM-L2 T6 neutral white LED with better color rendition, the HL55 delivers max 900-lumen output with a beam distance of 116m.

HL55

Max 900 Lumens

Power Off



Power On



900-lumen burst mode

Even if the light is off, press and hold the button for over one second can activate the burst mode. After 30 seconds, the HL55 automatically returns to the previous condition.

HL55

Max **900** Lumens



Eco (10 Lumens)



Low (55 Lumens)



Mid (165 Lumens)



High(420 Lumens)



Burst(900 Lumens)

Four brightness levels plus burst mode
Give you total command over output and runtime.

HL55

Max 900 Lumens



Optimum output-to-weight ratio

Weighing only 115g (excluding battery), the HL55 boasts 900-lumen maximum output.

HL55

Max 900 Lumens



+



或



Powered by one 18650 battery

Or two CR123A batteries

HL55

Max **900** Lumens



Powered by one 18650 battery

Equals to the power of 4 AA cells, but only half of 4 AA cells both in size and weight.

HL55

Max 900 Lumens



Enhanced heat dissipation

All-metal housing

To shed heat and impact

HL55

Max **900** Lumens



Waterproof to IPX-8 standard

Underwater 2 meters

HL55

Max 900 Lumens



160-degree tilt mechanism

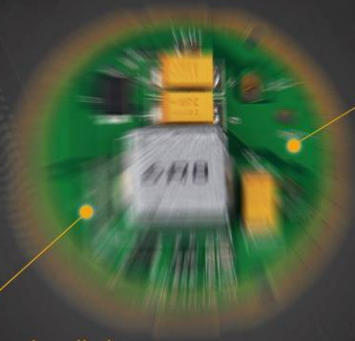
Adjusts the beam where needed

HL55

最高亮度 900 流明

Digitally regulated output
maintains constant brightness

Reverse polarity protection
guards against improper battery installation



HL55

Max 900 Lumens

Side switch



Made of aircraft aluminum
Premium Type III hard-anodized finish



Battery holder

HL55

Max 900 Lumens

ANSI/NEMA FL 1	High	Mid	Low	Eco	Burst
Output	420 Lumens	165 Lumens	55 Lumens	10 Lumens	900 Lumens
Runtime	3h 45min	10h	30h	150h	/
Distance	116m (Max)				
Intensity	3380cd (Max)				
Impact resistant	1m				
Waterproof	IPX-8, underwater 2m				

Notice: The above-mentioned parameters (lab tested by Fenix according to the ANSI/NEMA FL1 standard using one ARB-L2S 3400mAh Li-ion 18650 rechargeable battery) are approximate and may vary between lights, batteries and environments.

HL55

Max 900 Lumens



- ✦ Utilizes Cree XM-L2 T6 neutral white LED with a lifespan of 50,000 hours
- ✦ Uses one 18650 or two CR123A batteries
- ✦ 84mm (Length) × 46mm (Width) × 48mm (Height)
- ✦ 115 – gram weight (excluding batteries)
- ✦ Instant Burst mode
- ✦ All-function switch in the head for easy and fast operation
- ✦ Digitally regulated output maintains constant brightness
- ✦ Reverse polarity protection guards against improper battery installation
- ✦ Made from durable aluminum alloy
- ✦ Premium Type III hard-anodized anti-abrasive finish
- ✦ Toughened ultra-clear glass lens with anti-reflective coating