



**SMALL FOOTPRINT,  
HUGE OUTPUT.**

**E41 pocket-sized searchlight**

**1000 lumens**

# E41

Max **1000** Lumens



E41 is the pocket-sized searchlight you have been searching for. Thanks to the unibody casing and side by side battery compartment, the 11.6cm E41 packs four widely available AA batteries with a Cree XM-L2 U2 LED to blast 1000-lumen output and 275-meter beam distance. Featuring three brightness levels plus burst mode, E41 is a go-to gear for S&R professionals and outdoor enthusiasts.

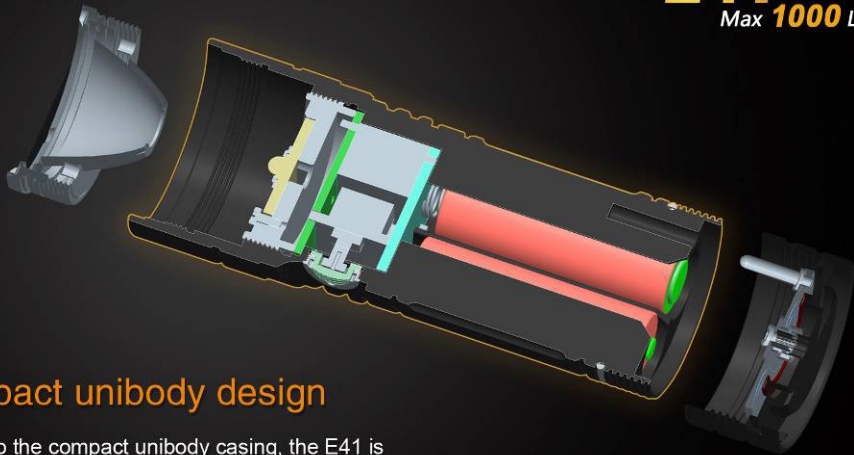
# E41

Max **1000** Lumens



- ✦ Compact unibody design
- ✦ 1000-lumen burst mode
- ✦ Three brightness levels
- ✦ Powered by four AA batteries

**E41**  
Max **1000** Lumens



## Compact unibody design

Thanks to the compact unibody casing, the E41 is smaller, lighter and much more reliable.

**E41**  
Max **1000** Lumens



## Compact unibody design

Measuring less than 12 centimeters long and weighing only 204 grams, the E41 is comfortable to hold and easy to carry.



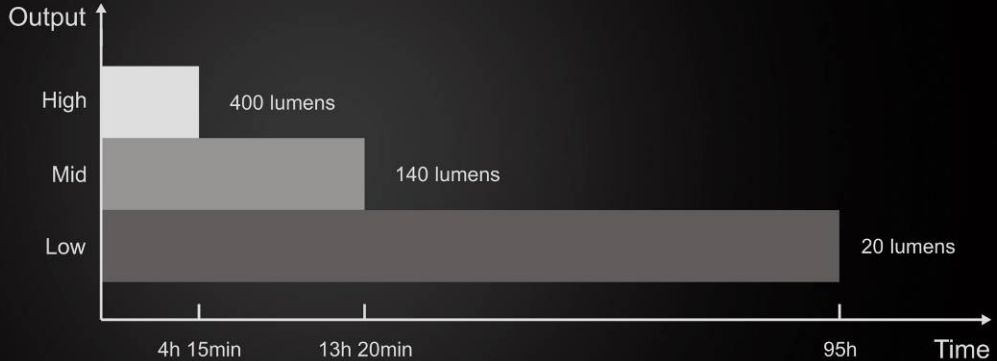
**E41**

Max **1000** Lumens

## 1000-lumen burst mode

Equipped with Cree XM-L2 U2 LED, E41 features 1000-lumen burst mode with 275-meter beam distance.

**E41**  
Max **1000** Lumens



## Three brightness levels

Give you the total command over runtime and output.



**E41**  
Max **1000** Lumens



## Powered by four AA batteries

The compact and battery holder-free E41 can accommodate 4 AA batteries and also features reverse polarity protection.



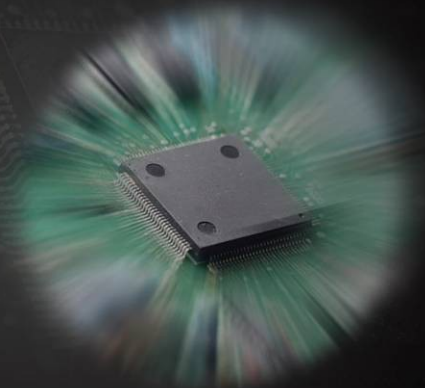


# E41

Max **1000** Lumens

- ★ ON/OFF: press and hold the switch for 0.5 seconds.
- ★ Output selection: press the switch to cycle through three brightness levels in the order of High→Low→Mid when the light is turned on.
- ★ Burst mode: press and hold the side switch for 1.2 seconds to activate 1000-lumen burst mode. The light returns to previous condition when the button is released.

**E41**  
Max **1000** Lumens



## Intelligent memory circuit

Automatically enters previous used brightness level when turned on.

**E41**  
Max **1000** Lumens



**IPX-8 standard**

Waterproof to 2 meters for 30 minutes.

# E41

Max **1000** Lumens

ANSI/NEMA FL 1		Burst	High	Mid	Low
<b>Output</b>		1000 Lumens	400 Lumens	140 Lumens	20 Lumens
<b>Runtime</b>	Ni-MH Battery	/	2h 30min	11h	80h
	Alkaline Battery	/	4h 15min	13h 20min	95h
<b>Beam Distance</b>		275m (Max)			
<b>Intensity</b>		18900cd (Max)			
<b>Impact Resistance</b>		1m			
<b>Water Proof</b>		IPX-8 (underwater 2 meters)			

The above-mentioned parameters (lab tested by Fenix using 2500mAh Ni-MH batteries and the included Alkaline batteries) are approximate and may vary between flashlights, batteries and environments.

# E41

Max **1000** Lumens



- ✦ Utilizes Cree XM-L2 U2 LED with a lifespan of 50,000 hours
- ✦ Uses four AA (Ni-MH, Alkaline ) batteries
- ✦ 116 mm (Length) x 40mm (Body Diameter) X 44mm (Head Diameter)
- ✦ 204-gram weight (excluding batteries)
- ✦ Digitally regulated output maintains constant brightness
- ✦ Reverse polarity protection guards against improper battery installation
- ✦ Side switch for output selection
- ✦ Made of durable aircraft-grade aluminum
- ✦ Premium Type III hard-anodized anti-abrasive finish
- ✦ Toughened ultra-clear glass lens with anti-reflective coating