



## BEYOND THE LIMITS

Fenix CL25R

All-season rechargeable  
camping lantern

Max 350 Lumens



## Fenix CL25R

Measuring at only 9.9 centimeters in length and weighing 130 grams, this all-season camping lantern lights up large areas up to 25 meters diameter with its 350-lumen maximum output, and also features a reliable Micro-USB charging function and a cold-resistant structure. The CL25R offers 6 output modes including turbo, red light and moonlight mode, which delivers more than 600 hours of illumination. This adaptable lighting source can be hung by its lanyard, adhere to metal objects with its magnetic base or mounted on a tripod.





**Dark Black**



**Olive Green**



- ✦ High intensity and wide illumination range
- ✦ Micro-USB charging function
- ✦ Cold-resistant structure
- ✦ White light and red light
- ✦ Hanging loop, tripod socket and magnetic base

# High intensity and wide illumination range

With an ultra-compact size and light weight, CL25R delivers 350-lumen maximum output with 25-meter beam diameter.



## Micro-USB charging function

- ✧ Compatible with common 18650 rechargeable Li-ion battery.
- ✧ Built-in protective circuit protects CL25R from over charging and over discharging.
- ✧ CL25R can light up at mid output, moonlight or red light while being charged.



Green light indicates that the battery is fully charged.

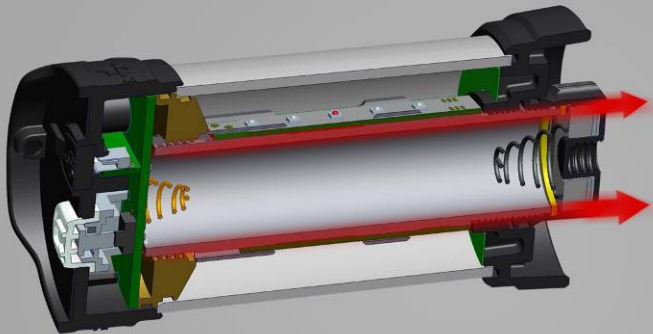
Red light indicates that the battery is being charged.



## Excellent cold resistance

Designed with all-season campers in mind, CL25R supports not only CR123A battery, but also 18650 rechargeable Li-ion battery with operating temperature down to  $-35^{\circ}\text{C}$  or even  $-40^{\circ}\text{C}$ . So we call it A Little Penguin.





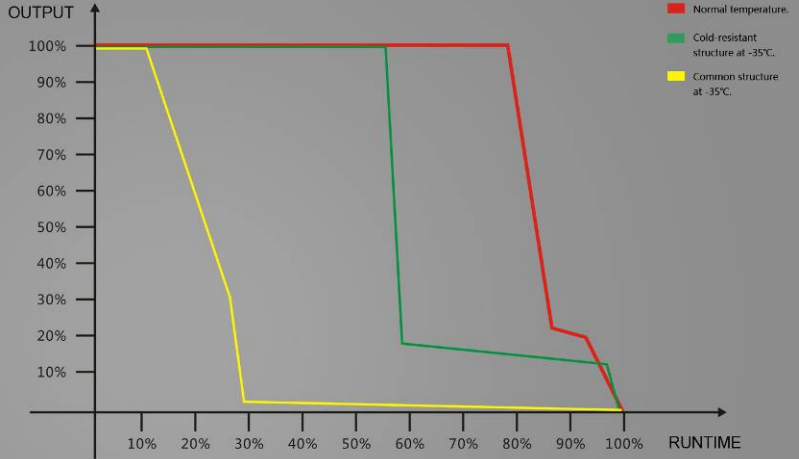
## Cold-resistant structure

Along the surface of battery compartment, the heat dissipation paths are designed as a protective layer against the cold while ensuring the heat-dissipating capability.



## Cold-resistant structure

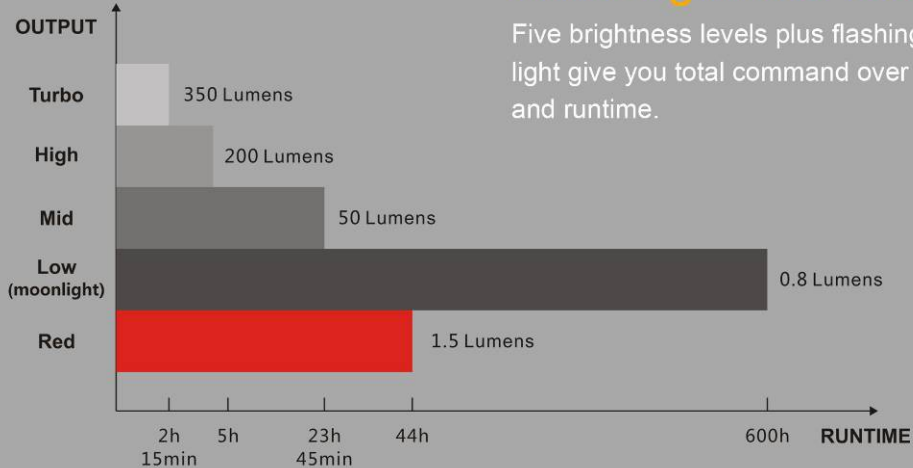
The runtime of 18650-powered light under low temperature will be double extended .



Runtime curves of 18650 Li-ion rechargeable battery

## White light and red light

Five brightness levels plus flashing red light give you total command over output and runtime.





## Moonlight mode (0.8 lumens, 600 hours)

Producing soft beam, the moonlight could satisfy users' demand for lower output with extended runtime like a night-light.



## Red light

### **Constant-on red light**

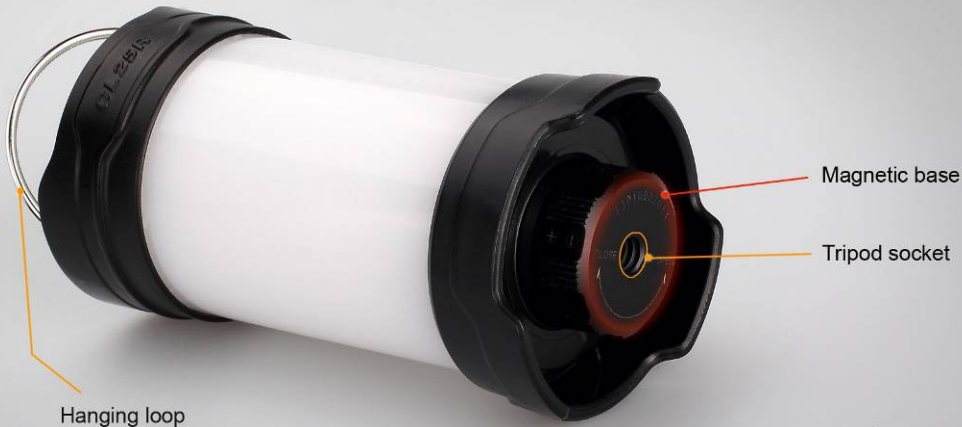
Preserves night vision without attracting things like mosquitoes.

### **Flashing red light**

For signaling and warning.

## Hanging loop, tripod socket and magnetic base

Various kinds of mounting ways for easy attachment.

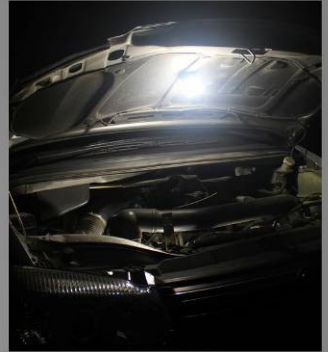




Hanging loop



Tripod mountable



Magnetic base

**Various kinds of mounting ways** for easy attachment.



Electric outlet



Portable power source

## External power options

When batteries are not available, CL25R is able to light up on mid, low or red light with an external power supply.





# Battery options



**3.7V 18650 rechargeable  
Li-ion battery**

High capacity for extended  
time of use.



**3V CR123A Lithium  
batteries**

Better low temperature  
performance.

## Low-power warning function

When the voltage level drops below the preset level, the indicator light on the switch blinks red to remind you to recharge the CL25R or replace the battery.



## White Light

### **ON/OFF**

Press and hold the switch for 0.8 seconds to turn the light on or off.

### **Output selection**

Press the switch to cycle through four brightness levels in the order of Low > Mid > High > Turbo when the light is turned on.

## Red Light

### **ON/OFF**

Double press the switch to activate constant-on red light when the light is turned on.

Double press again to return to white light. Or press and hold the switch for 0.8 seconds to turn the light off.

### **Flashing mode**

Press the switch again when the constant-on red light is turned on.





## IPX-6 standard

Protects against heavy splashing  
and rain.

\*Please ensure the USB cap covered.

		Turbo	High	Mid	Low (Moonlight)	Red	Flashing red
<b>Output</b>		350 Lumens	200 Lumens	50 Lumens	0.8 Lumens	1.5 Lumens	1.5 Lumens
<b>Runtime</b>	18650	2h 15min	5h	23h 45min	600h*	44h	/
	CR123A	2h 5min	4h 10min	18h 50min	500h	42h	/
<b>Beam Diameter</b>		25m (Max)					
<b>Impact Resistance</b>		1.5m					
<b>Water Resistance</b>		IPX-6					

\*When powered by a Fenix ARB-L2-3400mAh 18650 Li-ion battery, the runtime will be 880 hours.

The above-mentioned parameters (lab tested by Fenix using ARB-L2-2300mAh 18650 rechargeable battery and quality CR123A Lithium batteries) are approximate and may vary between lights, batteries and environments.



- ✦ Utilizes white LEDs and red LEDs with 350-lumen maximum output
- ✦ Powered by one 18650 Li-ion rechargeable battery or two CR123A Lithium batteries
- ✦ 52mm (diameter) ×99mm (height) (2.0"×3.9")
- ✦ 130 grams (4.5 oz) excluding battery
- ✦ Excellent cold-resistant design
- ✦ Micro-USB rechargeable, charging indicator and low voltage warning function
- ✦ 25-meter beam diameter
- ✦ Waterproof to IPX-6 standard
- ✦ White light with four output options and red light with two output options
- ✦ Built-in protective circuit protects users from overcharging, over discharging, overheating and improper battery installation
- ✦ Moonlight mode satisfies users' demand for lower output with extended runtime.
- ✦ Built-in magnet and tripod socket for easy attachment
- ✦ Luminous single button switch for easy and fast operation



## Included in the package

- ✦ CL25R camping lantern×1
- ✦ O-ring for water seal ×1
- ✦ Micro-USB cable ×1
- ✦ Fenix ARB-L2-2300mAh  
18650 rechargeable Li-ion battery ×1
- ✦ User manual×1
- ✦ Warranty card ×1