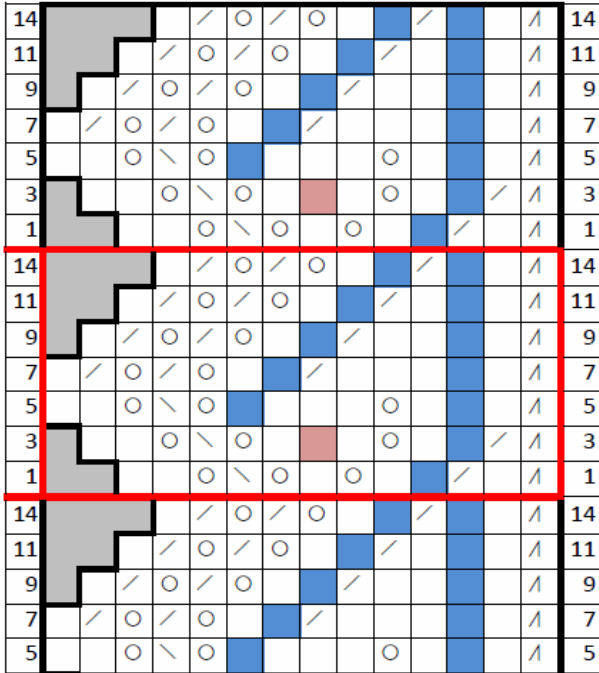


# STELLAR SWIRL EDGING



This is worked over 7 edge stitches so your edging needs to be divisible by 7 before you start.


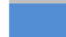
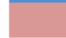
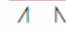
These charts are designed to be followed either by standard or mirror knitters. Do the decreases as appropriate to your style of knitting making them left or right leaning per the symbol.

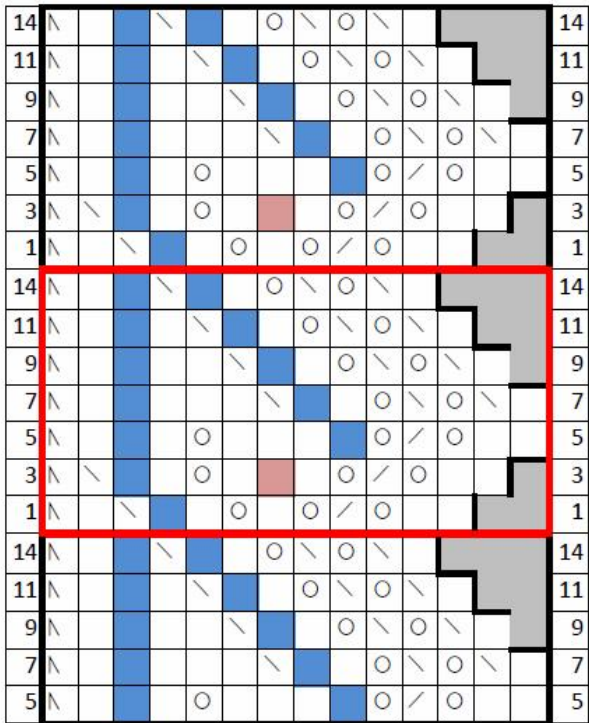
There are 2 charts so that this can be worked no matter

provisional co 12 stitches. Purl one row. The 1st row is actually row 5 of the repeat.

slip the stitch of every row

All wrong side rows, s1, purl to end

-  no stitch
-  small bead
-  large bead
-  join to edge of shawl. Ssk or k2tog as needed



place beads on the stitch before knitting it. I used 2 sizes of beads. One is a larger triangle bead, and the rest are regular 6/0 glass seed beads.

