



# ARB-L16-700U

**USB** RECHARGEABLE LI-ION BATTERY

With protection  
circuit in the anode

- Micro-USB charging port
- Multiple protection
- Short circuit protection
- 500 charge cycles

- Compliant standard certificates:

RoHS CE FC   



**700mAh**  
**ARB-L16-700U**

## MICRO-USB CHARGING PORT



While charging



Fully charged



**700mAh**  
**ARB-L16-700U**

**Protection circuit  
in the anode**

Overcharge protection  
Over-discharge protection  
Short circuit protection  
Overheat protection



**3 Sets of overheat protection**  
Pressure relief valve protection

Separate microporous protection

PTC cathodal block protection

**MULTIPLE PROTECTION**

Ensure the safety and good performance of the battery.

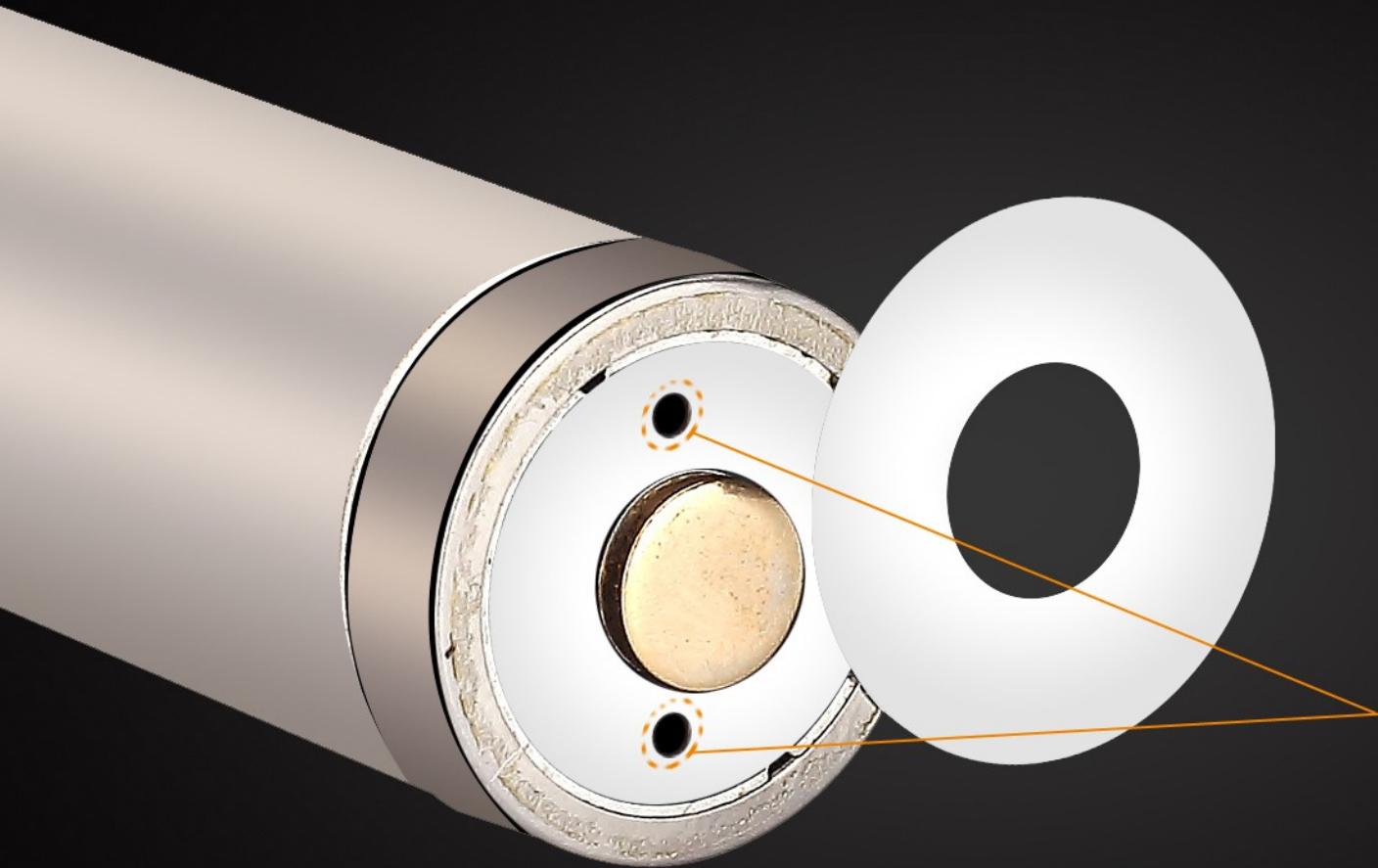
**700mAh**  
**ARB-L16-700U**



## SHORT CIRCUIT PROTECTION

A protective circuit is built into the anode and covered with a riveted steel hat. The battery is fully covered with the steel shell, thus the potential risk of short circuiting caused by collision or impact is hugely eliminated.

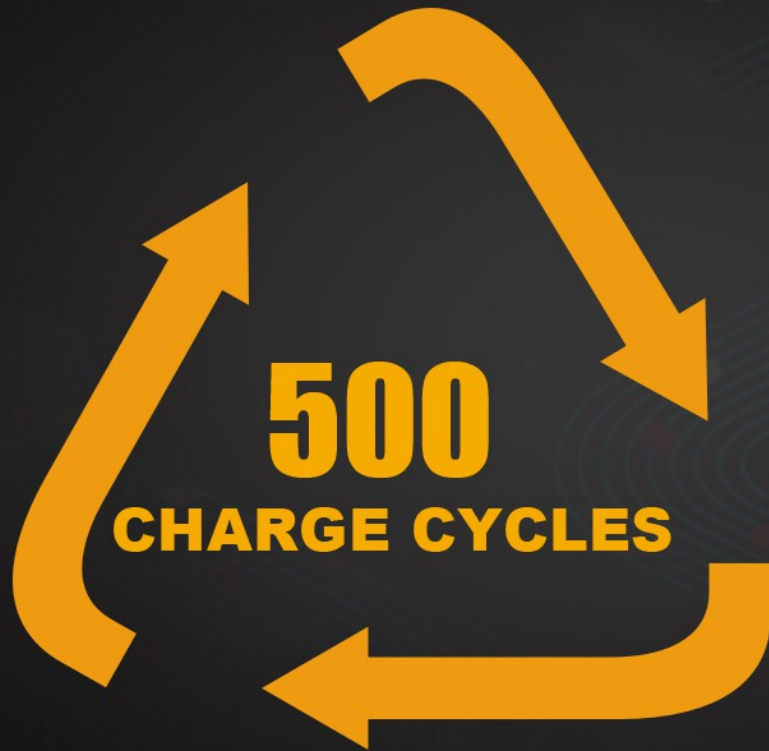
**700mAh**  
**ARB-L16-700U**



## **PRESSURE RELIEF VENT**

Pressure relief vents which will expel gas generated by a possible internal short circuit, will prevent the cell inflating and eliminate secondary hazards such as possible explosions, ensure a safer battery, although this will rarely happen with this quality battery.

**700mAh**  
**ARB-L16-700U**



## **500 CHARGE CYCLES**

A properly maintained ARB-L16-700U battery is designed to retain up to 75% of its original capacity even after 500 full charge and discharge cycles.



# 700mAh ARB-L16-700U

## TECHNICAL PARAMETERS

MODEL	ARB-L16-700U
CAPACITY	700mAh
VOLTAGE	3.6V
CHARGING CURRENT BY CHARGER	1A
CHARGING CURRENT BY USB PORT	0.3A
WEIGHT	183.5g
SIZE	Diameter: 18.6mm    Height: 35.5mm
WARRANTY PERIOD	12 months free warranty period from date of purchase.

- For use in: flashlights, headlamps, bicycle lights and camping lanterns that require 16340 batteries.
- Recommended charger: Fenix ARE-C1<sup>+</sup>, ARE-C2, ARE-C2<sup>+</sup>, ARE-X1<sup>+</sup>, ARE-X2.
- Charging options: USB port ✓    Charger ✓

Do not expose the battery to heat or discard of it in water. After extended periods of storage (three months or longer), it may be necessary to recharge the battery to regain maximum performance. Keep the battery out of the reach of children.