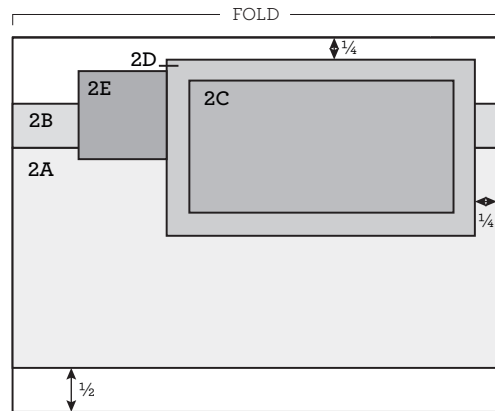
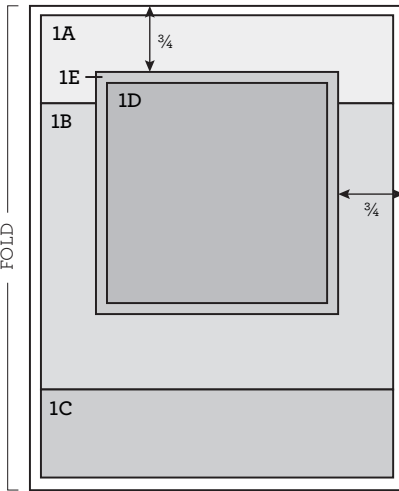
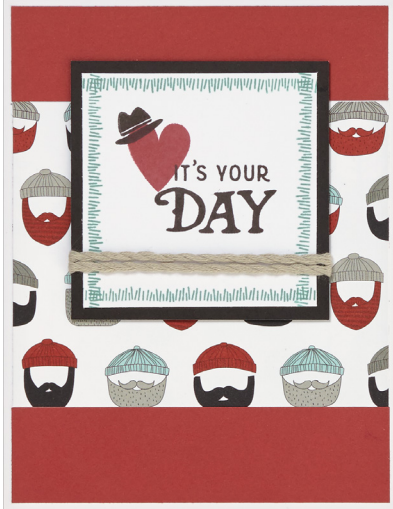
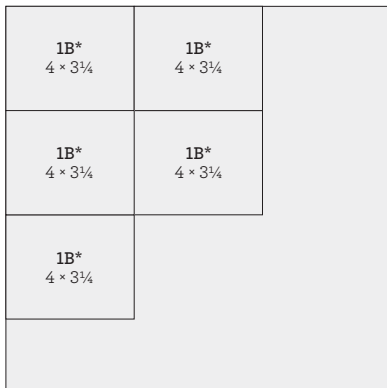


# Jack Cardmaking Workshop

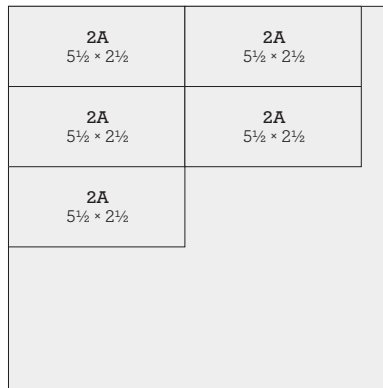


Jack Bulk Paper

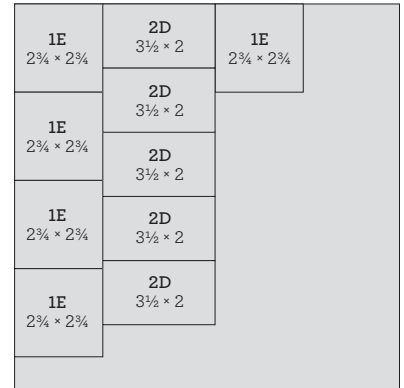
\*Back of paper



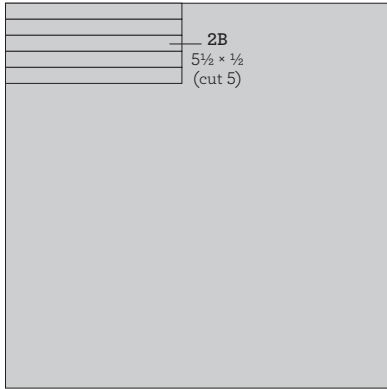
Jack Bulk Paper



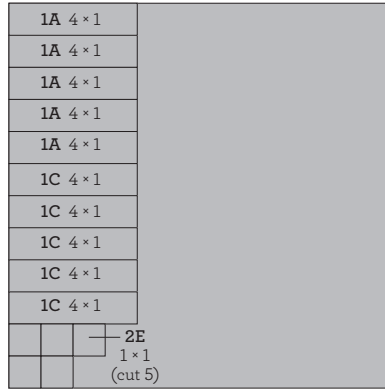
Black Cardstock



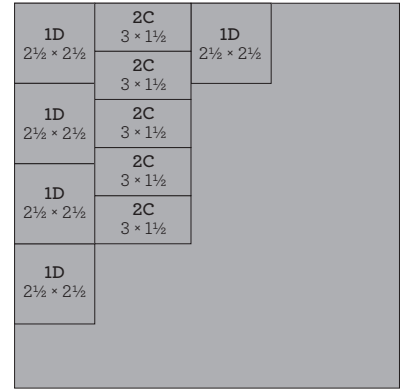
*Juniper Cardstock*



*Ruby Cardstock*



*White Daisy Cardstock*



The cutting diagrams and patterns for this workshop come from our *Make It from Your Heart*™ Vol. 2 how-to book, which features 16 two-page layout patterns, two single-page patterns, and 12 different card patterns. To learn more about this book, talk to your Independent Consultant.

## MATERIALS NEEDED

C1678	My Acrylix® Jack—Cardmaking Stamp Set
BULK400	Jack Bulk Paper Packet
X7222D	Jack Coordinating Cardstock
1385	White Daisy Cardstock
Z2870	Ruby Exclusive Inks™ Stamp Pad
Z2865	Juniper Exclusive Inks™ Stamp Pad
Z2805	Black Exclusive Inks™ Stamp Pad
Z3095	Whisper Thick Twine
Z341	Memory Book Mini Glue Dots™
Z2467	ShinHan™ Touch Twin™ Warm Grey 4 Marker
Z2060	Thin 3-D Foam Tape
Y1000	1" × 1" My Acrylix® Block
Y1002	1" × 3½" My Acrylix® Block
Y1003	2" × 2" My Acrylix® Block
Y1009	2" × 3½" My Acrylix® Block
X254	4½" × 5½" White Cards & Envelopes Value Pack

## CARD 1: IT'S YOUR DAY

*Make It from Your Heart*™ Vol. 2: Pattern 24 (p. 44)

### TIPS

- Turn card base so fold is on left
- Attach 1A ½" from top, left, and right edges of card
- Attach 1B directly below 1A
- Attach 1C directly below 1B
- Using Juniper ink, stamp grass border along all four edges of 1D, as shown
- Using Ruby ink, stamp heart onto 1D ½" from top and left edge
- Using Black ink, stamp "IT'S YOUR DAY" slightly below and to the right of the heart, as shown
- Using Black ink, stamp hat onto heart, as shown
- Attach 1D to center of 1E
- Using Glue Dots™, attach two pieces of twine to 1E ½" from bottom
- Using 3-D foam tape, attach 1E ¾" from top, left, and right edges of card

## CARD 2: HAPPY FATHER'S DAY

*Make It from Your Heart*™ Vol. 2: Pattern 19 (p. 42)

### TIPS

- Turn card base so fold is on top
- Attach 2A ½" from bottom of card
- Attach 2B directly above 2A
- Using Ruby ink, stamp "I LOVE YOU MORE" sentiment in top right corner of 2C
- Using Black ink, stamp top half of bear to the left of the sentiment so slightly tipped, as shown
- Using Ruby ink, stamp hat and tie on bear
- Using grey marker, color bear
- Attach 2C to center of 2D
- Attach 2D ½" from top and ¼" from right edge of card
- Dovetail 2E and 2F (use ½" of wood grain zip strip to create 2F)
- Attach 2E and 2F to top left edge of 2D, layering as shown
- Using two 2¼" pieces of twine, tie a knot and attach to 2C with Glue Dots™ just below sentiment
- Using Black ink, stamp "HAPPY FATHER'S DAY" in bottom right corner of card

**CLOSE** *to my* **HEART**®

*let me show you how*®

[www.closetomyheart.com](http://www.closetomyheart.com)  
[www.closetomyheart.ca](http://www.closetomyheart.ca)