

Shuttle Ice Drop

Vicki Clarke 2018 victats@gmail.com

For tutorials and pictures for this pattern go to victats.blogspot.com

Materials: size 20 thread, square gem (12mm)

Wind 3 yards of size 20 thread on a shuttle CTM with ball (you need 3 yards of ball thread)

You start by making 2 rings that are joined together with the square in between.

R1 6 lp 1 lp 1 lp 6 lp 1 lp 1 lp 6 lp 1 lp 1 lp 6 lp 1 lp 1 close ring and leave a space of thread the same length of the picots then start the next ring. This counts are your first picot.

All picots on R2 join to the same ordered picot on ring 1

R2 1 + 1 + 6 + 1 + 1 + 6 + 1 + 1 + 6 + 1 + 1 + 6 add in the gem so it faces you before you close the ring. The points of the square go between the groups of 3 picots.

Round 1

Leave a space of thread from the ball thread and the shuttle thread so they meet half way between the rings

If you look at the rings there are 4 groupings of 3 picots. When joining I will refer to the first picot of group or the last picot of group.

***C1** 4 lj (last picot of group)

C2 4 p 4 lj (1st picot of group)*

Repeat from * to * joining back to the beginning. Do not cut, go into round 2

Round 2

SR 4/4

***C1** 12

R1 4 + (p rd 1) 4

C2 4

SCMR 4 p 4

C3 4

R2 4 + (p rd 1) 4

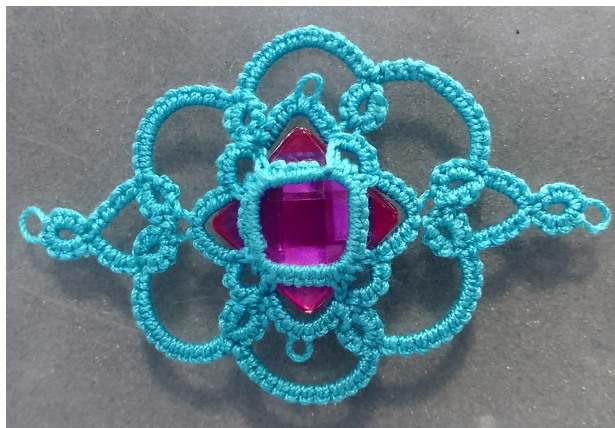
C4 12

R3 4 + (space above lj Rd 1) 4

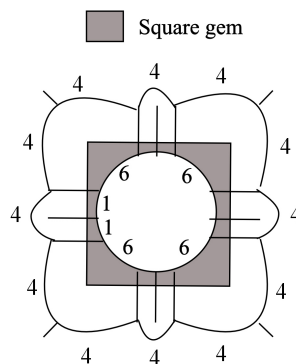
C5 13*

R4 4 + space above lj Rd 1) 4

For 2nd half of shuttle ice drop start from **C1** and end with **C5**, this is marked by *.



Shuttle Ice Drop Round 1

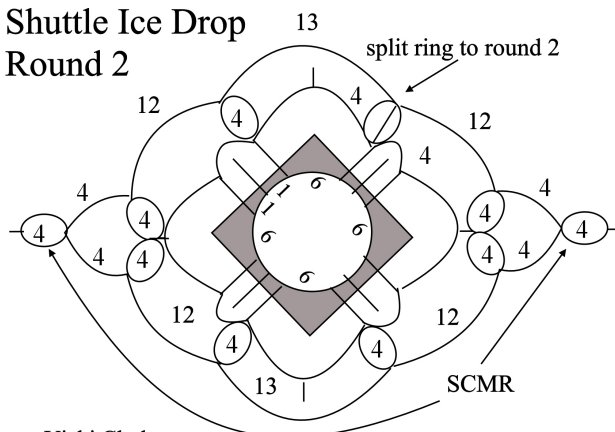


Vicki Clarke
2018 all rights reserved

Terms

R- ring
C- chain
SR- split ring
SCMR- self closing
mock ring
lj- lock join
lp- long picot (5 mm
vertically)
p- picot
+ join

Shuttle Ice Drop Round 2



Vicki Clarke
2018 all rights reserved