

ARB-L18-2900L

COLD-RESISTANT RECHARGEABLE BATTERY

- Withstands extreme cold of - 40°C
- Protective circuit inside the anode
- Multiple protection
- 500 charging circles



ARB-L18-2900L

Cold-resistant rechargeable battery

Work as normal even in severe cold of - 40°C

0.2C current discharges 70% capacity
(about 2000Wh) even in -30°C

EXISTS FOR EXTREMES

Competent for extreme environments
such as glacier, snow mountains



ARB-L18-2900L

Cold-resistant rechargeable battery

SUFFICIENT POWER STEADY PERFORMANCE

Capable of offering super power for
high-performance lighting products
in low-temperature environment



Battery capacity of **2900 mAh**



Max current of **4A**



ARB-L18-2900L

Cold-resistant rechargeable battery

Protection circuit
in the anode

Overcharge
Over-discharge protection
Short circuit
Overheat protection

3 sets of overheat protection

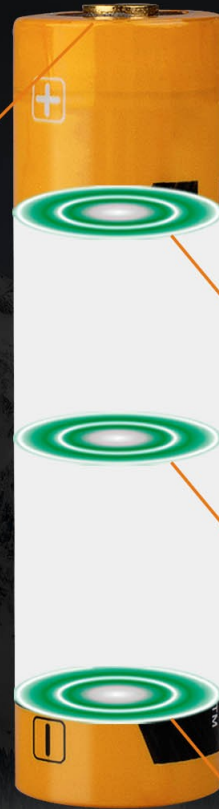
Pressure relief valve protection

Separate microporous protection

PTC cathodal block protection

MULTIPLE PROTECTION

Ensure the use safety and good performance of the battery



ARB-L18-2900L

Cold-resistant rechargeable battery

STEEL SHELL RIVETING TECHNOLOGY

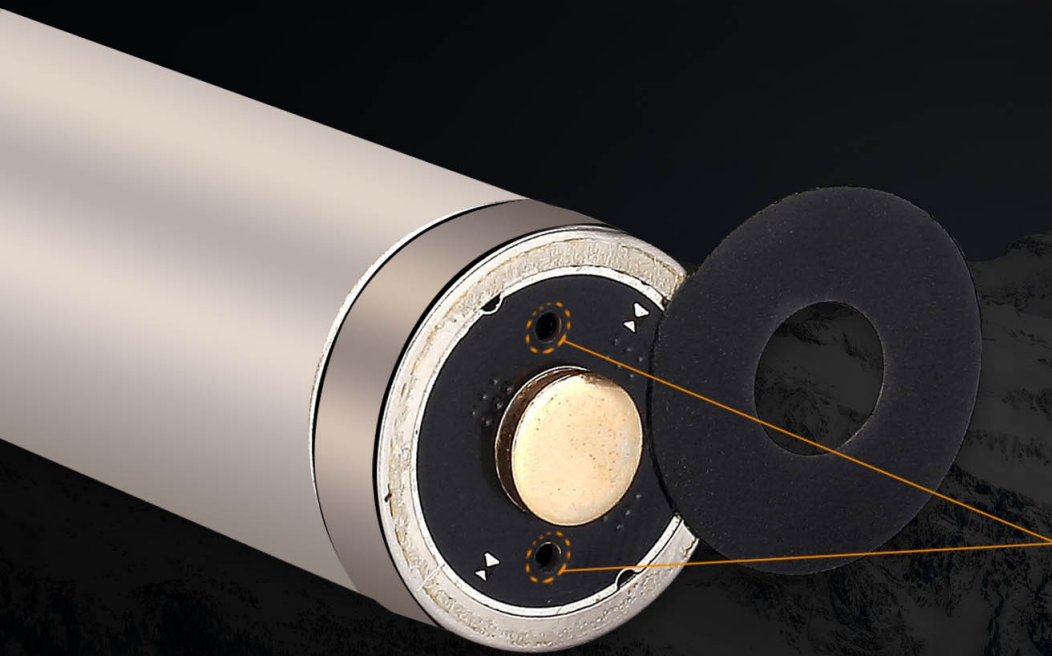
A protective circuit is built into the anode and covered with a riveted steel hat. The battery is fully covered with the steel shell, thus the potential risk of short circuiting caused by collision or impact is hugely eliminated.

Fully protected the
battery against damage



ARB-L18-2900L

Cold-resistant rechargeable battery



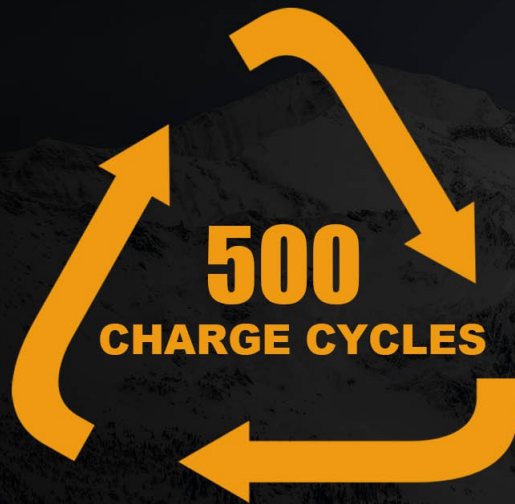
PRESSURE RELIEF VENT

Rapidly expel internal gas

Pressure relief vents which will expel gas generated by a possible internal short circuit, will prevent the cell inflating and eliminate secondary hazards such as possible explosions, ensure a safer battery, although this will rarely happen with this quality battery.

ARB-L18-2900L

Cold-resistant rechargeable battery



500 CHARGING CIRCLES

A properly maintained ARB-L18-2900L battery is designed to retain up to 75% capacity even after 500 full charge and discharge circles.



TECHNICAL PARAMETERS

Battery	ARB-L18-2900L
Capacity	2900mAh
Voltage	3.6V
Current	Recommended: 1A, Maximum: 2.9A
Weight	46g
Size	18.3mm Diameter x 68.8mm Length

ARB-L18-2900L

Cold-resistant rechargeable battery



Note:

1. Do not expose the battery to heat or discard of it in water.
2. After extended periods of storage (three months or longer), it may be necessary to recharge the battery to regain maximum performance.
3. Keep the battery out of the reach of children. Seek medical attention immediately in case of ingestion.

Certificate:    

🕒 Warranty period: 12 months free warranty from date of purchase