

WICHITA 13 - 16 & 22 - 25 WH

beachfront



- 📍 Lodge; 13, 14, 15, 22, 23, & 24: 1 room
16 & 25: 2 rooms
- 🕒 Located on the beachfront next to Arapaho
- 🚿 Bathroom with tub/shower combo

- ✚ Porch
- 🔥 One shared fire pit next to building
- ♿ No handicap rooms

Beds & Capacity by Unit

	Unit #	13	14	15	16	22	23	24	25
Beds	Twin								
	Bunk	1	1	1	1	1	1	1	1
	Double				1				1
	Queen		1	1	1	1	1	1	1
	King	1							
Capacity	Minimum	3	3	3	4	3	3	3	4
	Normal	4	4	4	6	4	4	4	6
	Maximum	5	5	5	6	5	5	5	6

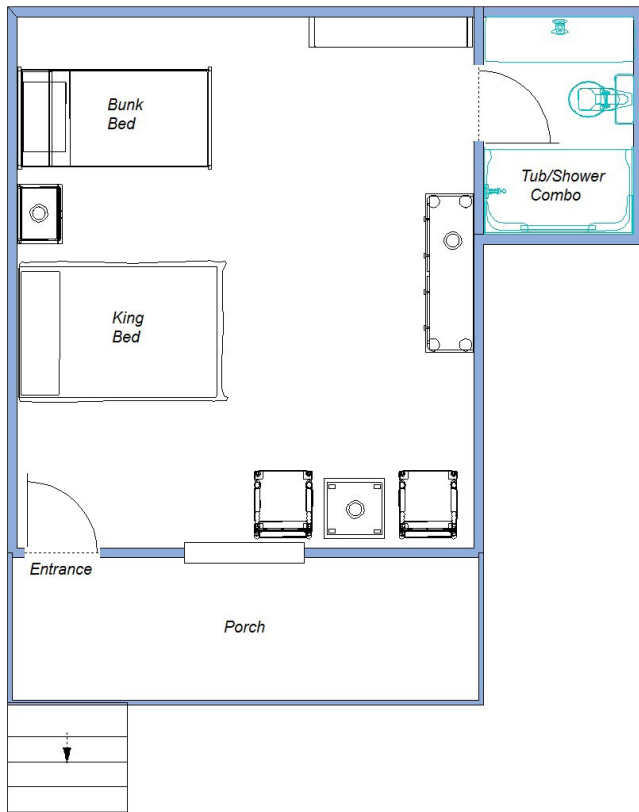
Summer 2022 Pricing

No single occupancy.

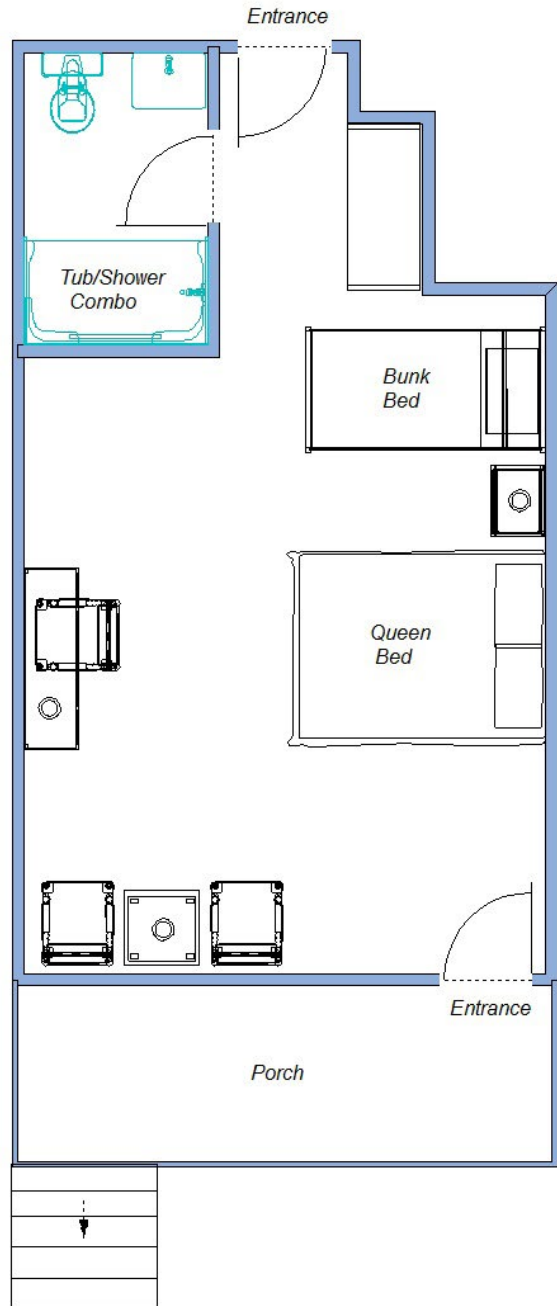
Week	Adult	7 - 13 yr old	1 - 6 yr old
Weeks 1 & 9	\$973.00	\$455.00	\$98.00
Weeks 2, 3, 7, & 8	\$1,043.00	\$490.00	\$105.00
Weeks 4, 5, & 6	\$1,081.50	\$511.00	\$112.00

WICHITA

Unit 13
Approximately 310 square feet



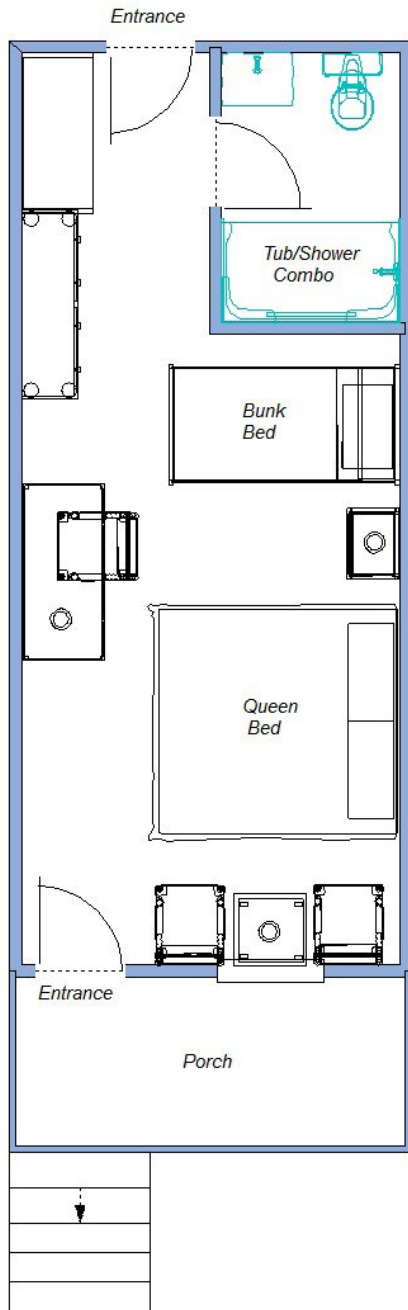
Unit 14
Approximately 354 square feet



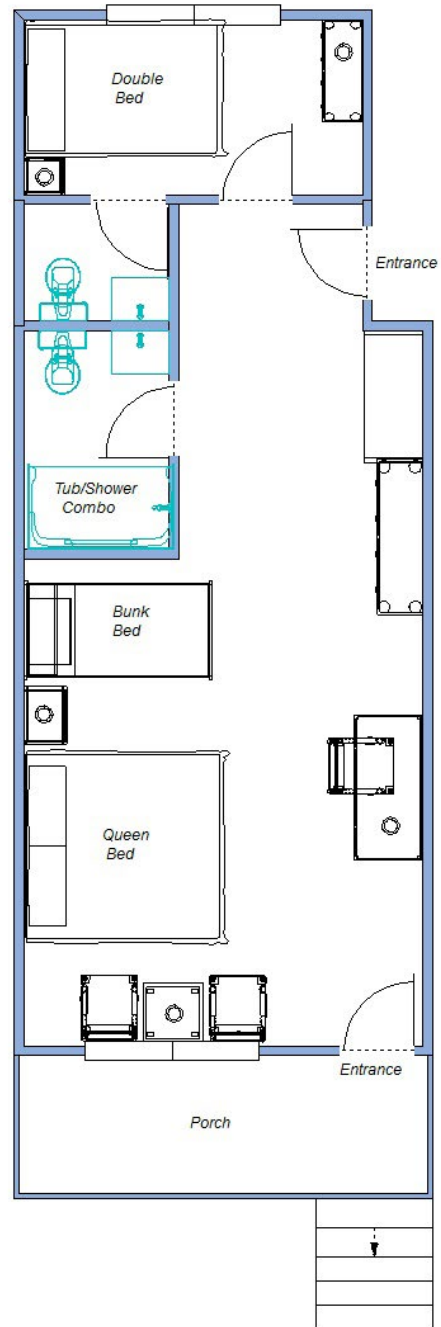
Lake Pleasant

WICHITA

Unit 15
Approximately 273 square feet



Unit 16
Approximately 490 square feet

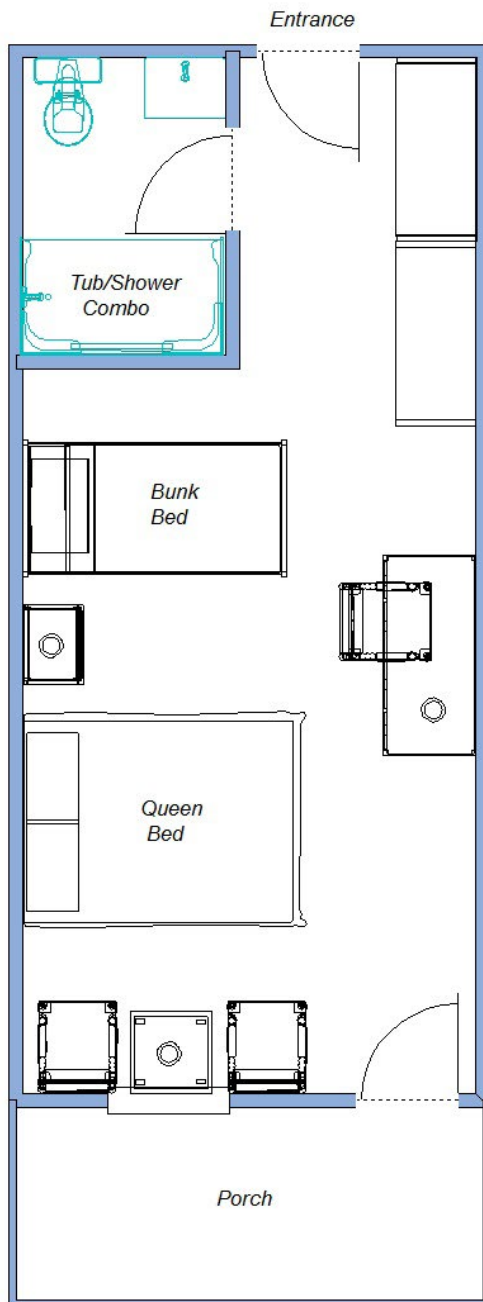


Lake Pleasant

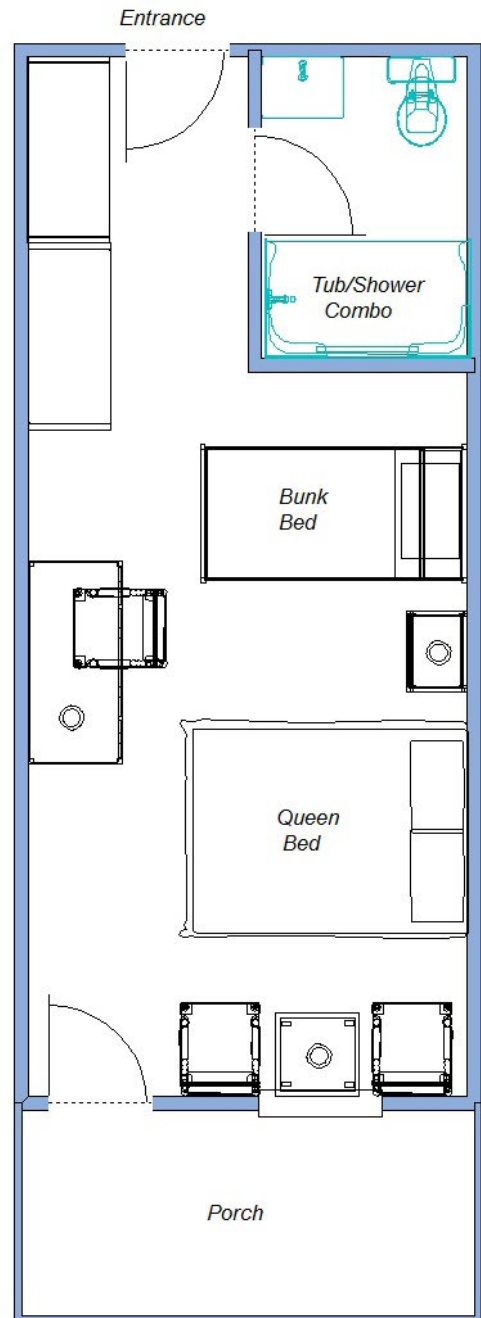
WICHITA

Lake Pleasant

Unit 22: Upstairs
Approximately 285 square feet

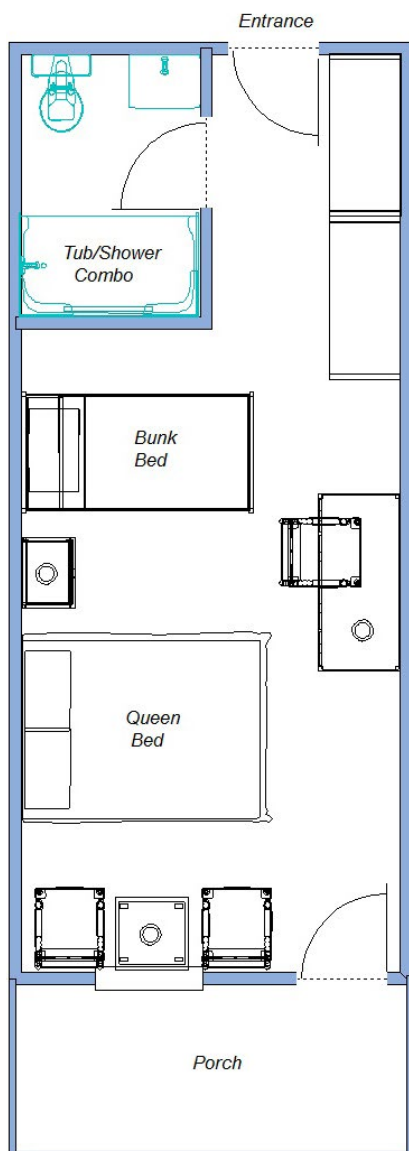


Unit 23: Upstairs
Approximately 285 square feet



WICHITA

Unit 24: Upstairs
Approximately 280 square feet



Unit 25: Upstairs
Approximately 385 square feet

