

# WICHITA 11 & 21

## efficiency

WH



- 🏠 Lodge; efficiency units
- 🕒 Located on the beachfront next to Arapaho
- 🚻 Bathroom with tub/shower combo

- ✚ Efficiency units including a full kitchen with stove, microwave, refrigerator, coffee pot, and toaster oven
- 🔥 One shared fire pit next to building
- ♿ No handicap rooms

## Beds & Capacity by Unit

	Unit #	11	21
Beds	Twin	2	1
	Bunk		1
	Double		
	Queen	1	1
	King	1	
Capacity	Minimum	3	3
	Normal	6	5
	Maximum	7	5

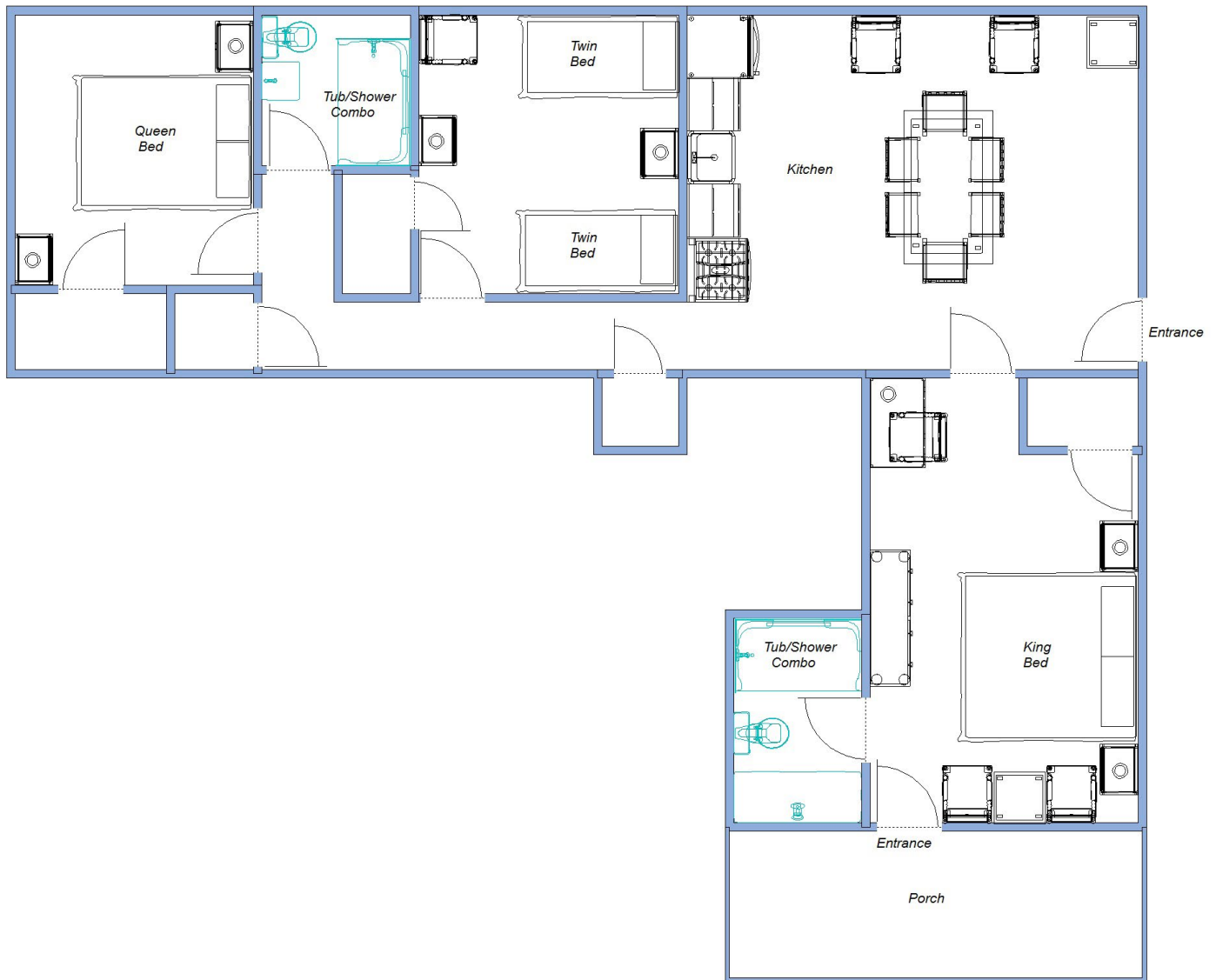
## Summer 2022 Pricing

Includes maid service but NO MEALS. Optional meal plans in either dining room available. All non-efficiency units have meals on the Hill. Gratuities for Housekeepers not included. No single occupancy.

11	Weeks 1 & 9	\$2,688.00 per week	\$175.00 per week, per person over 6 occupants
	Weeks 2, 3, 7, & 8	\$2,891.00 per week	\$175.00 per week, per person over 6 occupants
	Weeks 4, 5, & 6	\$2,989.00 per week	\$175.00 per week, per person over 6 occupants
21	Weeks 1 & 9	\$2,583.00 per week	Maximum 5, no additional guests
	Weeks 2, 3, 7, & 8	\$2,786.00 per week	Maximum 5, no additional guests
	Weeks 4, 5, & 6	\$2,877.00 per week	Maximum 5, no additional guests

# WICHITA

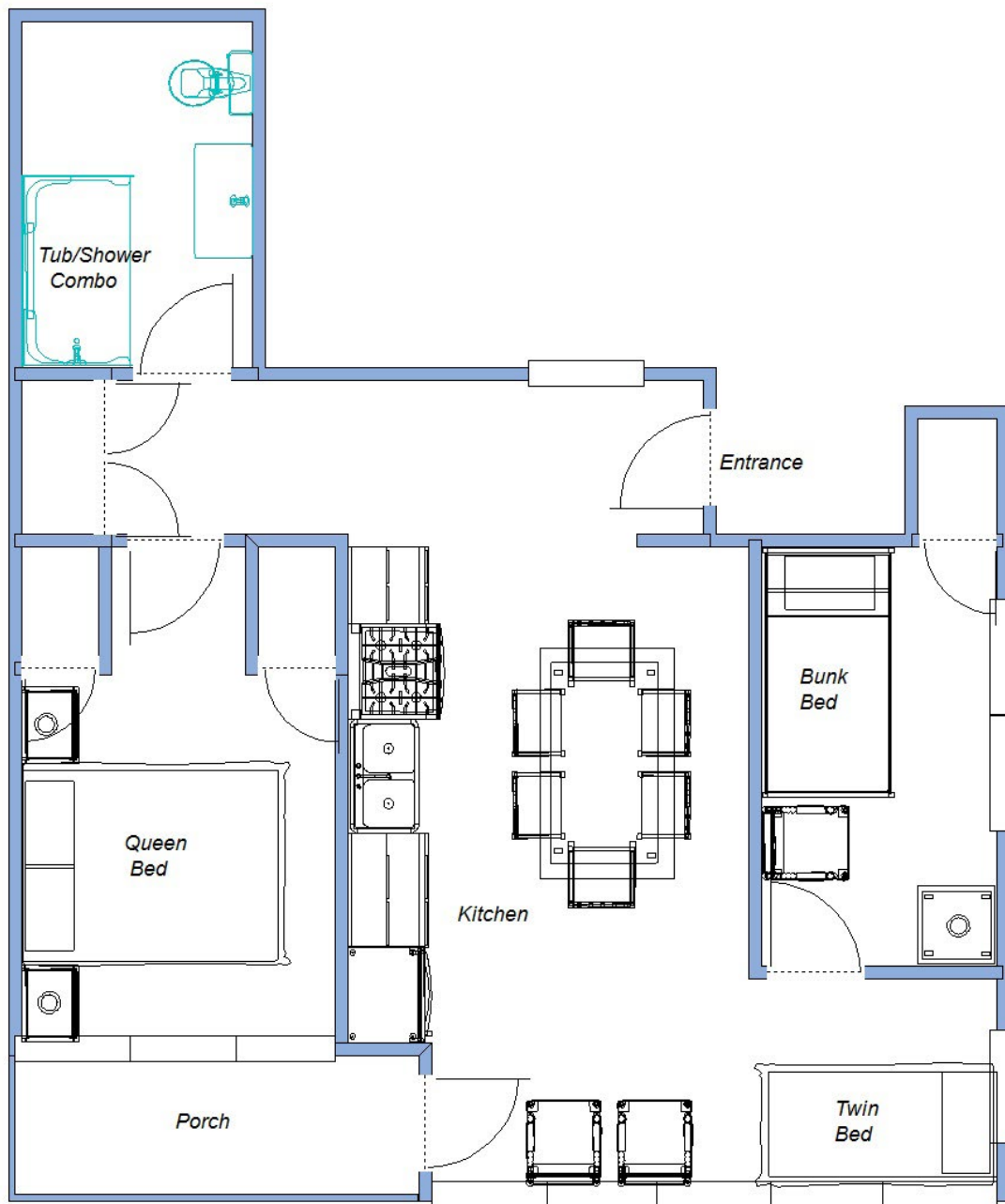
Unit 11  
Approximately 915 square feet



Lake Pleasant

# WICHITA

Unit 21: Upstairs  
Approximately 580 square feet



Lake Pleasant