

# CHIPPEWA A, B, D, & F CP

## lakeside



- ↑ Cabins; A, & B: 2 rooms,  
D: 1 room, F: 3 rooms
- 🕒 Located along the lake near the point
- 🚻 Bathroom with tub/shower combo,  
Unit A: Bathroom with shower only

- + View of lake
- 🔥 All units have fire pits
- ♿ No handicap rooms

## Beds & Capacity by Unit

**Units C, F, G, & H:** 2 twin beds can be converted into a king bed upon prior notice.  
**Unit D:** King bed can be converted into 2 twin beds upon prior notice.

	Unit	A	B	D	F
Beds	Twin	1	2		3
	Bunk				
	Double	1			2
	Queen				
	King		1	1	
Capacity	Minimum	2	2	NA	5
	Normal	3	4	2	7
	Maximum	4	5	3	7

## Summer 2022 Pricing

**Unit D:** Contact Registrar for single occupancy rates.  
**Units A, B, & F:** No single occupancy.

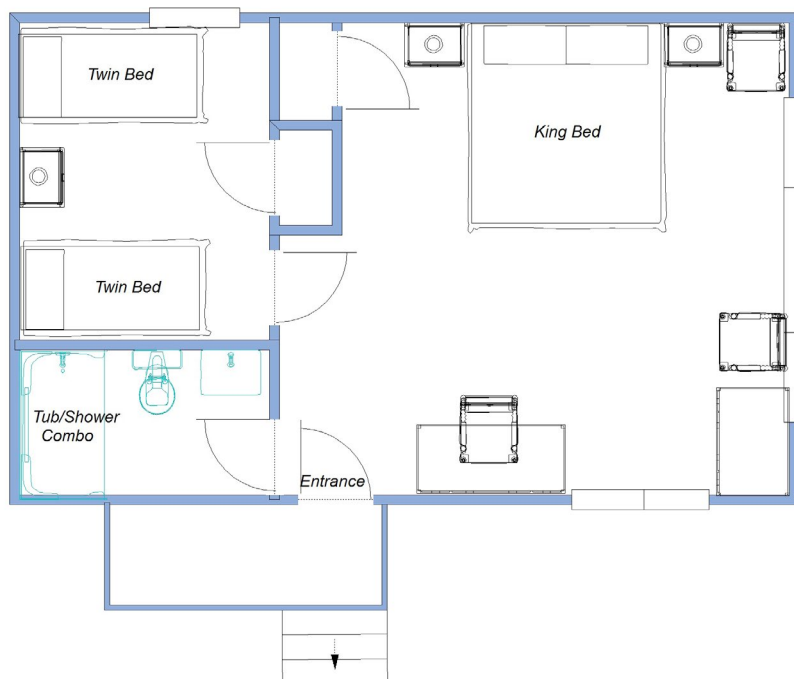
Week	Adult	7 - 13 yr old	1 - 6 yr old
Weeks 1 & 9	\$1,022.00	\$469.00	\$105.00
Weeks 2, 3, 7, & 8	\$1,106.00	\$504.00	\$112.00
Weeks 4, 5, & 6	\$1,141.00	\$525.00	\$119.00

# CHIPPEWA

Unit A  
Approximately 238 square feet

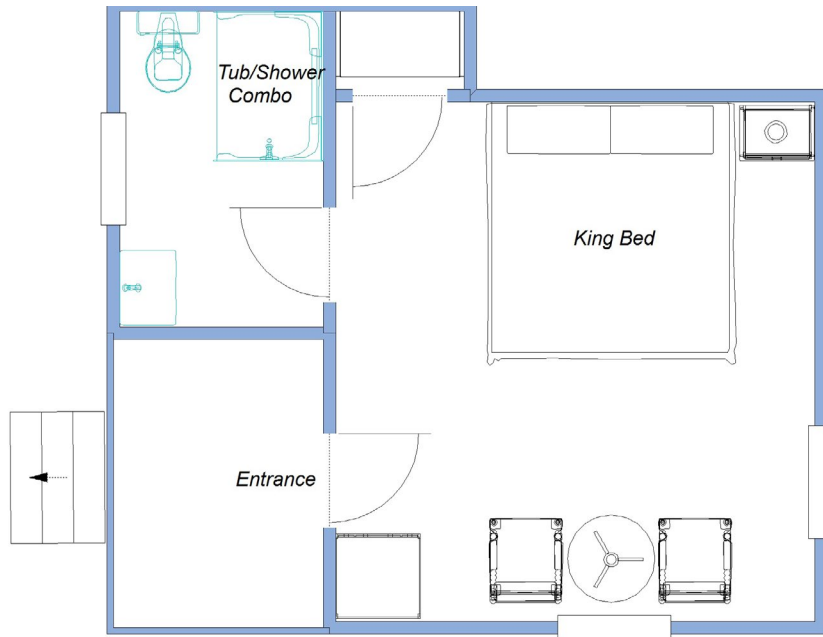


Unit B  
Approximately 412 square feet



# CHIPPEWA

Unit D  
Approximately 222 square feet



Unit F  
Approximately 410 square feet

