

# ONONDAGA

OG

beachfront



- 🏠 Longhouse; 10 one-room units
- 📍 Located on the beach between Oneida and Cheyenne
- 🚻 Bathroom with tub/shower combo

- ✚ Porch and mini fridge
- 🔥 All units have fire pits
- ♿ No handicap rooms

## Beds & Capacity by Unit

**Units 9 & 10:** Smaller than rooms 1 - 8  
Rooms 1/2, 3/4, 5/6 & 7/8 connect

	Unit #	1	2	3	4	5	6	7	8	9	10
Beds	Twin	1		1		1		1			
	Bunk										
	Double		2		2		2		2		
	Queen	1		1		1		1		1	1
	King										
Capacity	Minimum	2	2	2	2	2	2	2	2	NA	NA
	Normal	3	4	3	4	3	4	3	4	2	2
	Maximum	4	5	4	5	4	5	4	5	2	2

## Summer 2022 Pricing

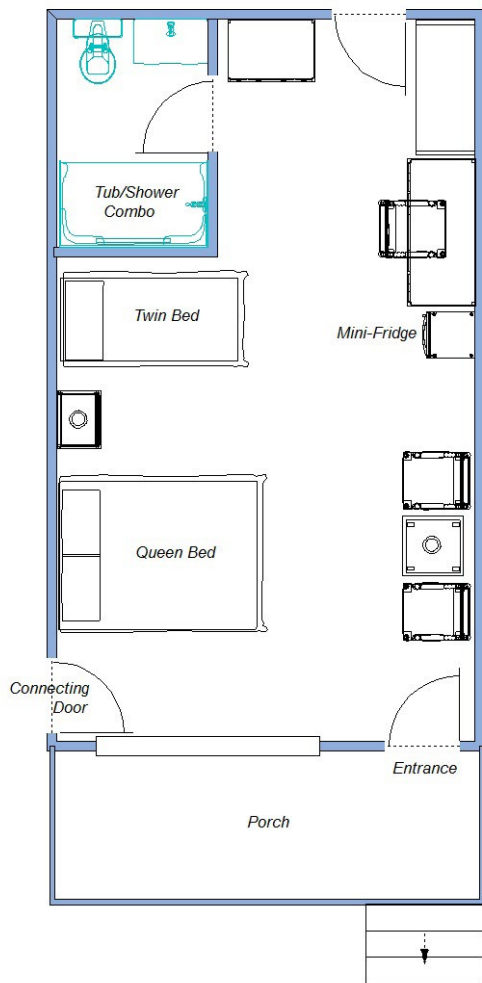
**Units 9 & 10:** Contact Registrar for single occupancy rates.  
**Units 1 - 8:** No single occupancy.

Week	Adult	7 - 13 yr old	1 - 6 yr old
Weeks 1 & 9	\$1,029.00	\$469.00	\$112.00
Weeks 2, 3, 7, & 8	\$1,113.00	\$504.00	\$119.00
Weeks 4, 5, & 6	\$1,148.00	\$525.00	\$126.00

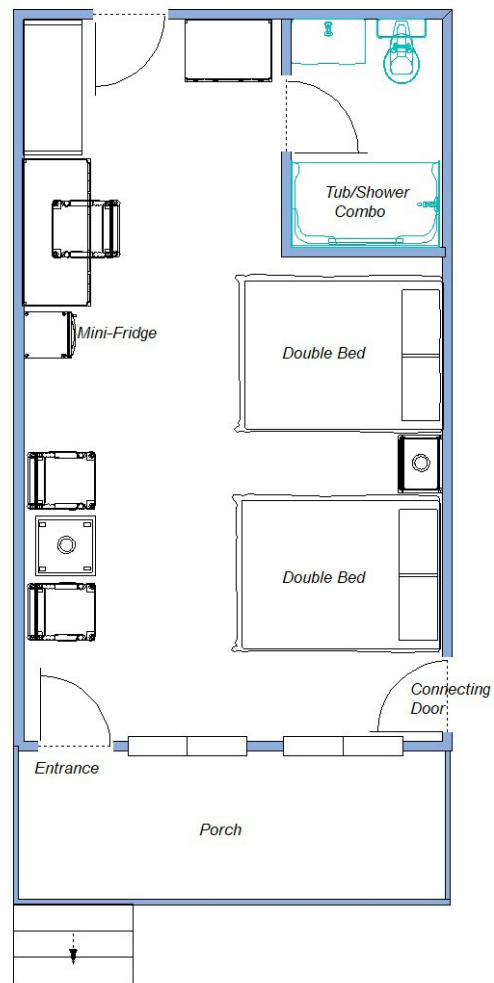
# ONONDAGA

Each unit is approximately 285 square feet

Units 1, 3, 5 & 7



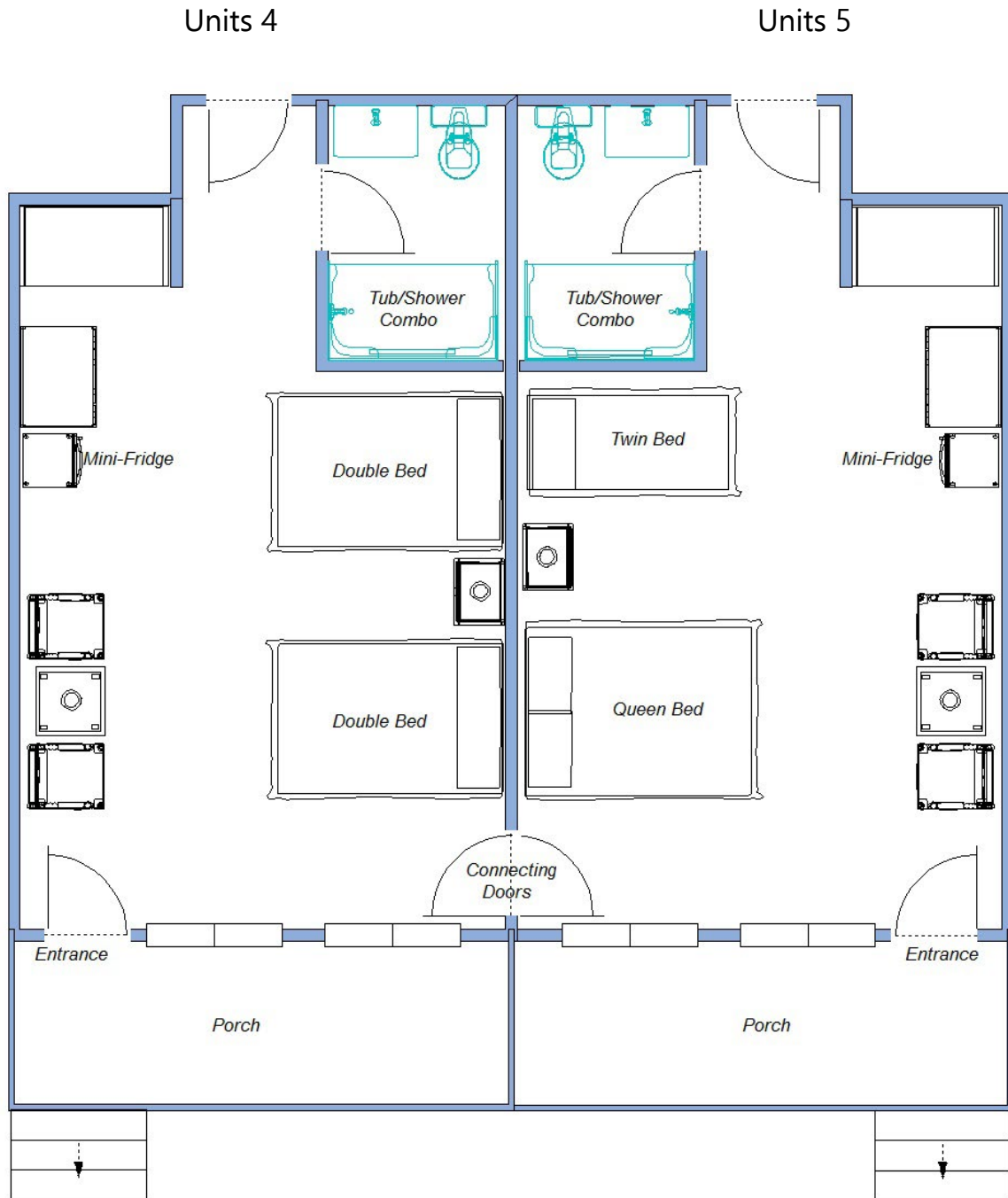
Units 2, 4, 6 & 8



Lake Pleasant

# ONONDAGA

Each unit is approximately 340 square feet



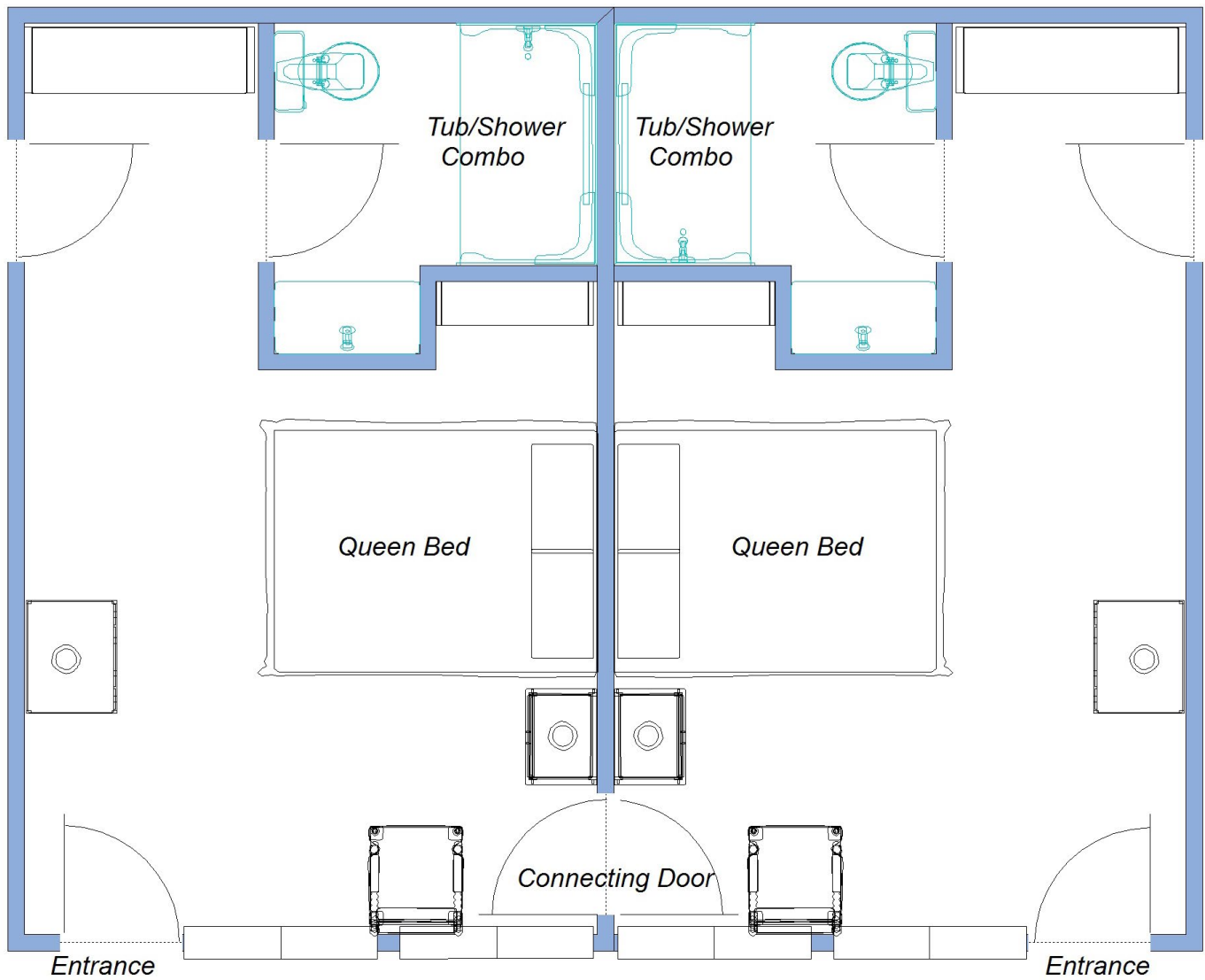
Lake Pleasant

# ONONDAGA

Each unit is approximately 223 square feet

Unit 10

Unit 9



Lake Pleasant