

# PURDY CENTER

PC



↑ Hotel Style; 58 one-room units

🕒 Located near the front entrance of Camp

♿ Non-handicap rooms have a bathroom with shower/tub combo

✚ Carpet, upscale dining room, lobby, social/game hall

🚫 No fire pits

♿ Rooms 205, 207, 209, & 211 are handicap accessible with walk in shower

## Beds & Capacity by Unit

	Unit #	106 - 112	205/207 209/211	201 - 204	206/208 210/212	301 - 312	217 - 228 313 - 328
Beds	Twin						
	Bunk						1
	Double	2		2	2	2	
	Queen		1				1
	King						
Capacity	Minimum	2	NA	2	2	2	3
	Normal	4	2	4	4	4	4
	Maximum	5	3	5	5	5	5

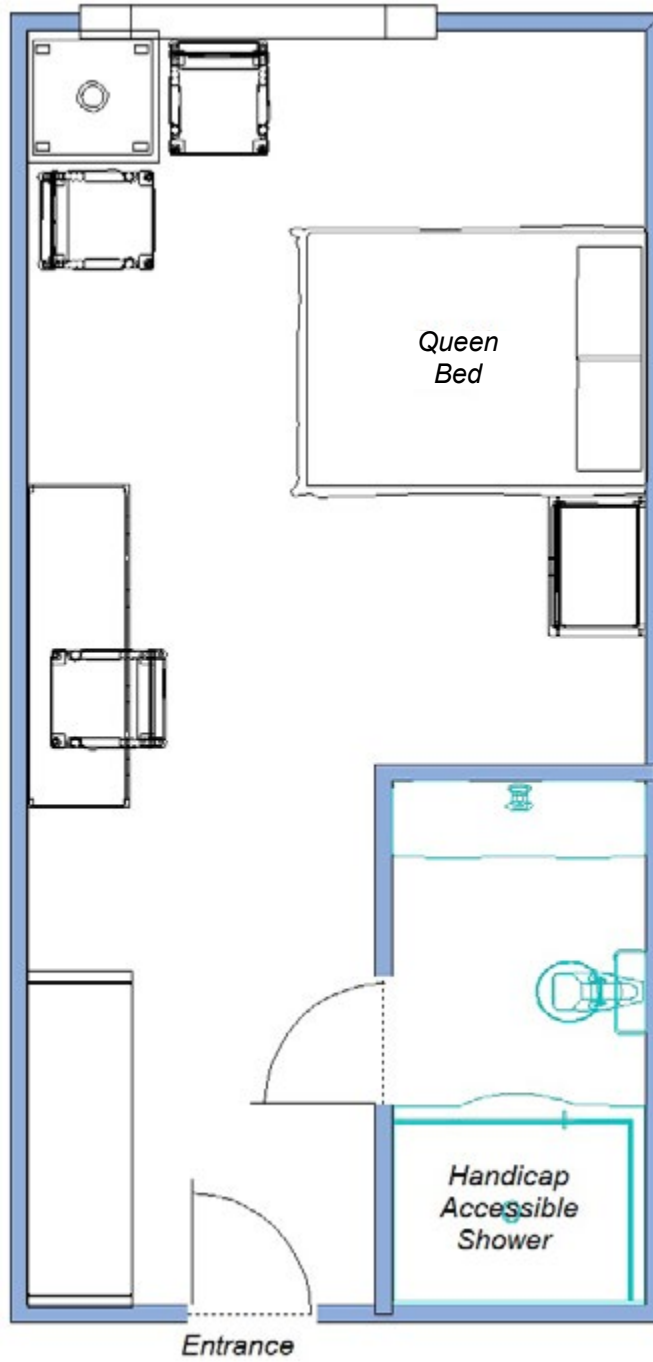
## Summer 2022 Pricing

Rooms 106 - 112, 205, 207, 209, 211, 201- 204, 206, 208, 210, 212, 301 - 312: Contact Registrar for single occupancy rates. Rooms 217 - 228, 313 - 328: No single occupancy.

	Week	Adult	7 - 13 yr old	1 - 6 yr old
Purdy Center Meals	Weeks 1 & 9	\$861.00	\$476.00	\$63.00
	Weeks 2, 3, 7, & 8	\$913.00	\$504.00	\$70.00
	Weeks 4, 5, & 6	\$938.00	\$525.00	\$77.00
Hill Meals	Weeks 1 & 9	\$735.00	\$378.00	\$63.00
	Weeks 2, 3, 7, & 8	\$787.50	\$406.00	\$70.00
	Weeks 4, 5, & 6	\$812.00	\$427.00	\$77.00

# PURDY CENTER

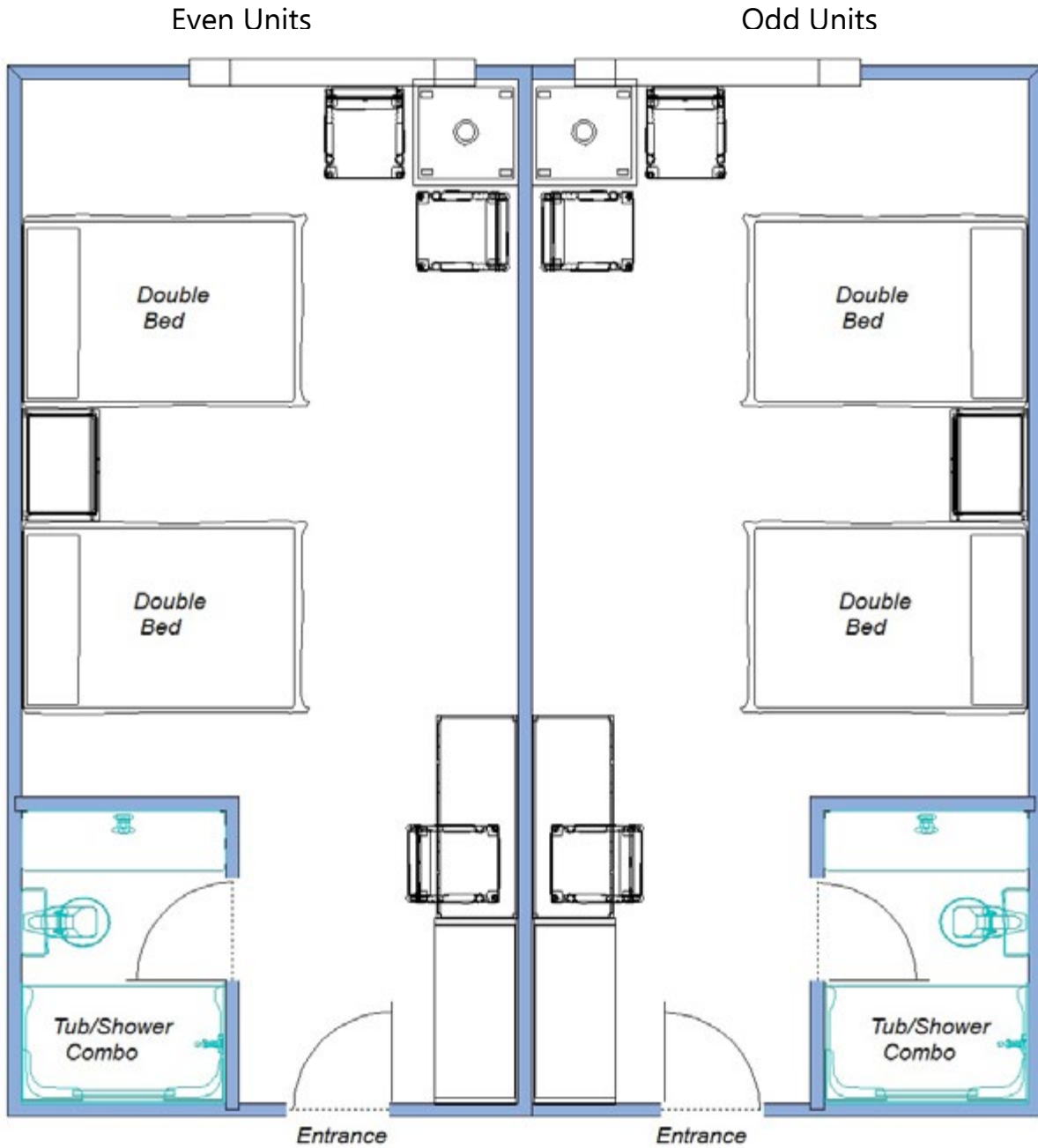
Units 205, 207, 209 & 211  
Handicap Accessible



# PURDY CENTER

Each unit is approximately 305 square feet  
Even units face toward Lake Pleasant

Units 106, 108, 110, 112  
Units 201-212 and  
Units 301 - 312



# PURDY CENTER

Each unit is approximately 305 square feet  
Even units face toward Lake Pleasant

Units 217-228 and  
Units 313 - 328

Even Units

Odd Units

