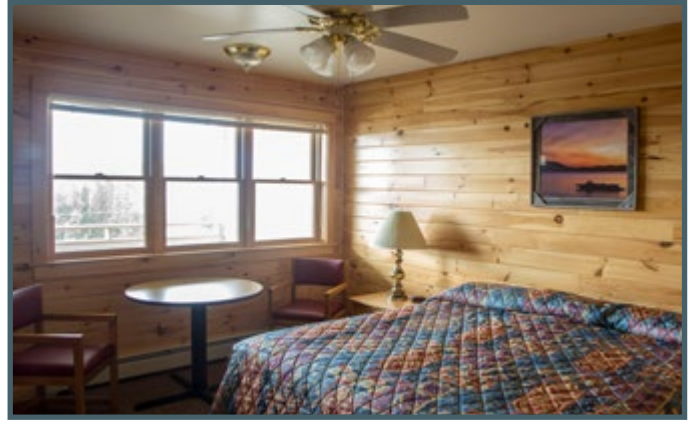


# SENECA

non-lakeside

SN



- 🏠 2 Story longhouse; 8 one-room units
- 📍 Located on Main Street between Tibbitts and Delaware
- ♿ All non-handicap units have a bathroom with tub/shower combo

- ✚ Private porch, microwave, mini fridge, and coffee pot
- 🚫 No fire pits
- ♿ Unit 14 is handicap accessible and has a walk in shower

## Beds & Capacity by Unit

King bed can be converted to 2 twin beds upon prior notice.

	Unit #	11	12	13	14	21	22	23	24
Beds	Twin								
	Bunk								
	Double								
	Queen								
	King	1	1	1	1	1	1	1	1
Capacity	Minimum	NA	NA	NA	NA	NA	NA	NA	NA
	Normal	2	2	2	2	2	2	2	2
	Maximum	3	3	3	3	3	3	3	3

## Summer 2023 Pricing

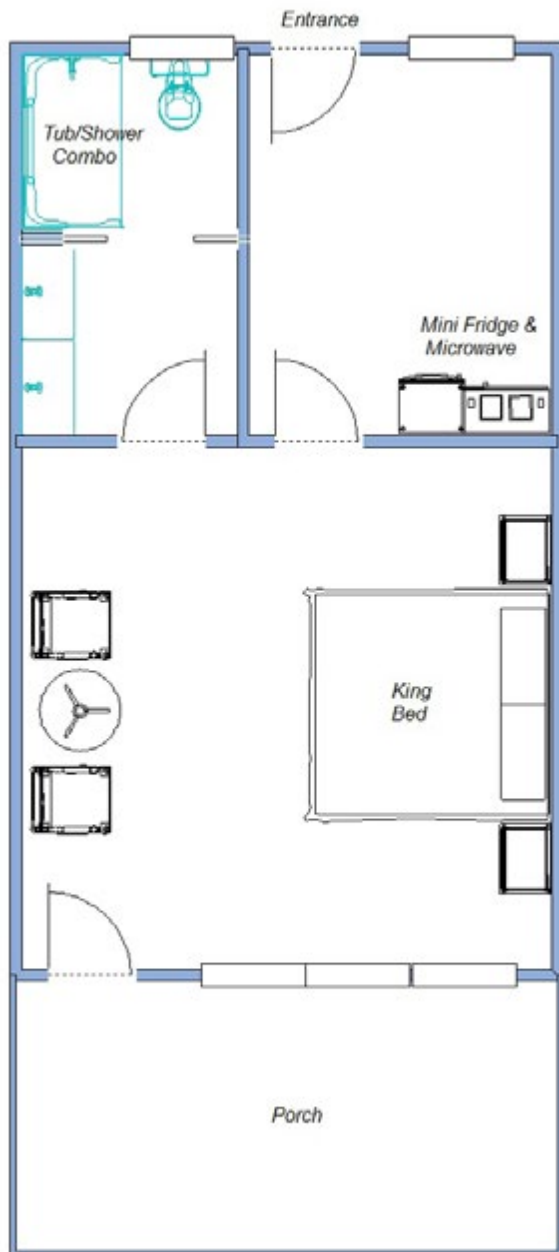
Contact Registrar for single occupancy rates.

Week	Adult	7 - 13 yr old	1 - 6 yr old
Weeks 1 & 9	\$836.50	\$427.00	\$73.50
Weeks 2, 3, 7, & 8	\$906.50	\$455.00	\$84.00
Weeks 4, 5, & 6	\$934.50	\$479.50	\$91.00

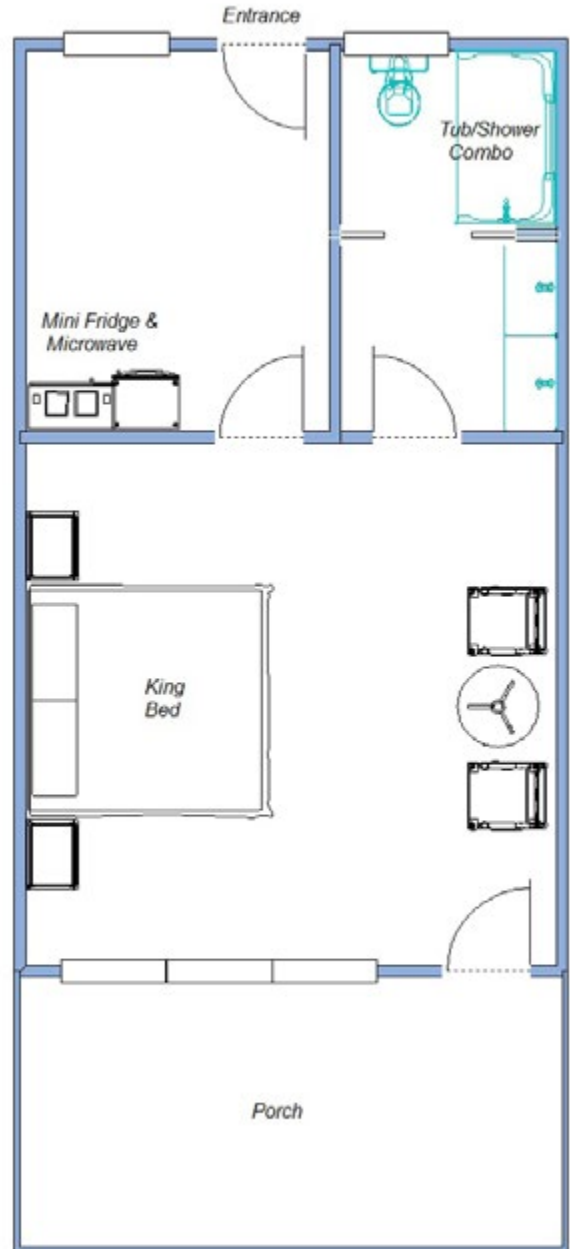
# SENECA

Units 11, 12, 13 & 14 Downstairs  
Units 21, 22, 23 & 24 Upstairs

Units 11, 13, 21 & 23  
Approximately 508 square feet



Units 12, 22 & 24  
Approximately 508 square feet



# SENECA

Unit 14: Handicap-Accessible  
Approximately 495 square feet

