

SHAWNEE

SH

non-lakeside



🏠 Longhouse; 7 one-room units

📍 Located on Main Street near Point tennis courts

♿ Units 4 & 5: bathroom with tub/shower combo

✚ Porch

🚫 No fire pits

♿ Units 1, 2, 3, 6, & 7 are handicap accessible with a walk in shower

Beds & Capacity by Unit

Units 2, 4, & 6: 2 twin beds can be converted to a king bed upon prior notice.

	Unit #	1	2	3	4	5	6	7
Beds	Twin		2		2		2	
	Bunk							
	Double							
	Queen	1		1		1		1
	King							
Capacity	Minimum	NA	2	NA	2	NA	2	NA
	Normal	2	2	2	2	2	2	2
	Maximum	3	3	3	3	3	3	3

Summer 2023 Pricing

Units 1, 3, 5, & 7: Contact Registrar for single occupancy rates.

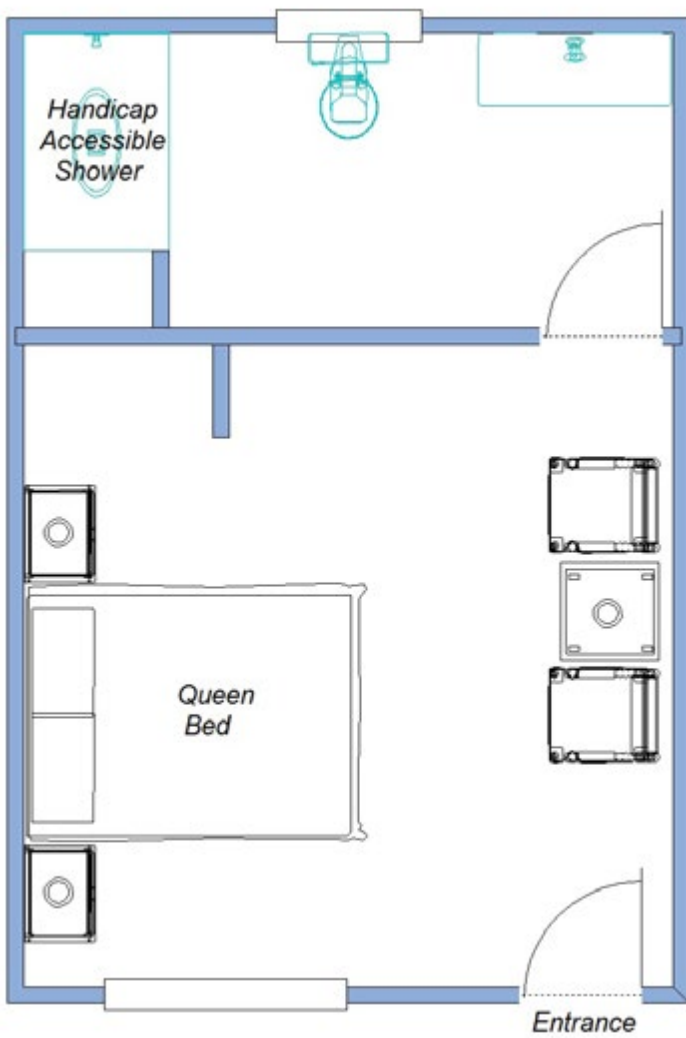
Units 2, 4, & 6: No single occupancy.

	Week	Adult	7 - 13 yr old	1 - 6 yr old
21,22	Weeks 1 & 9	\$808.50	\$409.50	\$66.50
	Weeks 2, 3, 7, & 8	\$868.00	\$448.00	\$77.00
	Weeks 4, 5, & 6	\$896.00	\$462.00	\$84.00

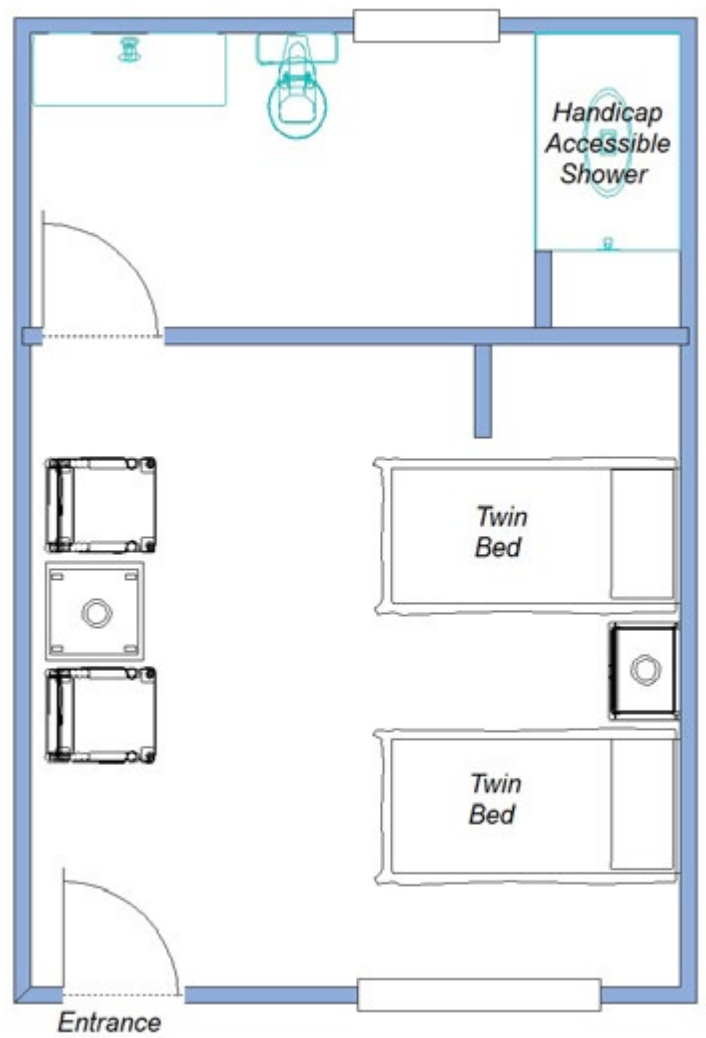
SHAWNEE

Each unit is approximately 298 square feet

Units 1, 3 & 7



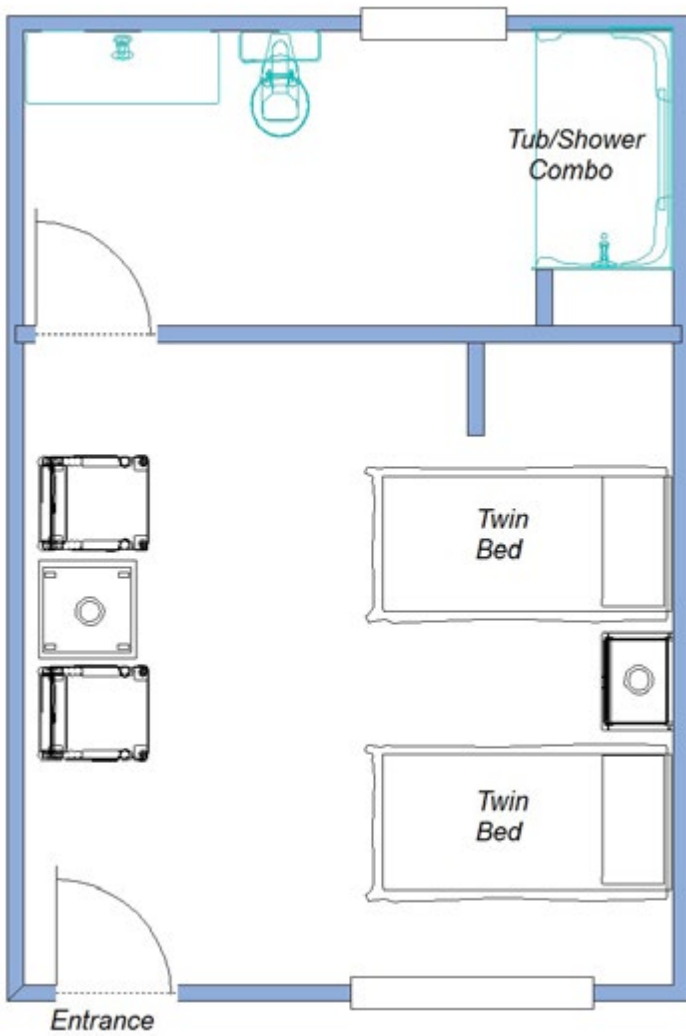
Units 2 & 6



SHAWNEE

Each unit is approximately 298 square feet

Unit 4



Unit 5

