

CHIPPEWA A, B, D, & F CP

lakeside



- 🏠 Cabins; A, & B: 2 rooms,
D: 1 room, F: 3 rooms
- 🕒 Located along the lake near the point
- 🚻 Bathroom with tub/shower combo,
Unit A: Bathroom with shower only
- ✚ View of lake
- 🔥 All units have fire pits
- ♿ No handicap rooms

Beds & Capacity by Unit

Units C, F, G, & H: 2 twin beds can be converted into a king bed upon prior notice.
Unit D: King bed can be converted into 2 twin beds upon prior notice.

	Unit	A	B	D	F
Beds	Twin	1	2		3
	Bunk				
	Double	1			2
	Queen				
	King		1	1	
Maximum Occupancy		4	5	3	7

CHIPPEWA

Unit A
Approximately 238 square feet

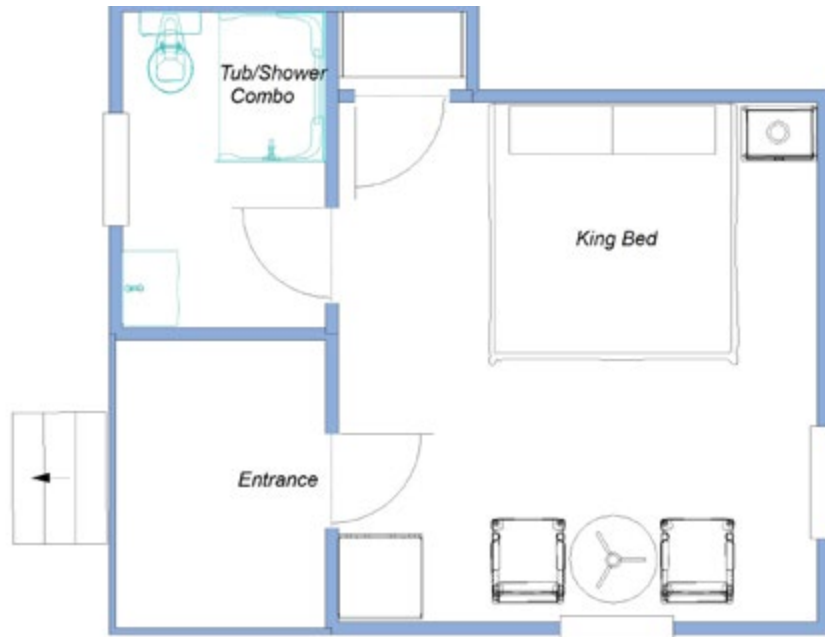


Unit B
Approximately 412 square feet



CHIPPEWA

Unit D
Approximately 222 square feet



Unit F
Approximately 410 square feet

