

Why?

As a church which is growing in numbers and ministries, we have been seeking a permanent building to help us as a church family, gather, grow and go.



From 2024, our new home in western Lausanne will be:

Consistent in a transient city,

Permanent for long-term residents and the local population,

Geographically accessible for English-speakers living, studying and working in a wide catchment area,

Ideally located for students at UNIL and EPFL at the heart of the university district,

Purpose built and equipped to enable us to serve efficiently,

Suitably sized for newcomers to feel welcome enough to join our church family,

Flexibly arranged and available throughout the week for outreach, and teaching, training and discipleship ministries to support our spiritual growth, and to equip us to spread the gospel while we're in Lausanne and wherever we go from here.

How?

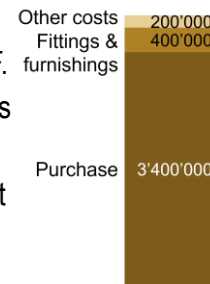
Moving home needs preparation, decision-making and hard work. As a church family we can all be involved.

Pray with thanksgiving for God's provision thus far:

- Ask for God's guidance in our preparations, that we would be able to work together for his glory.
- Entrust to him our relationships with the developers and contractors and their safety as they work.
- Commit to God the ministry of the church from this new home.

Give

The project will cost about 4 million CHF. We have already received generous gifts to the Capital Fund. We will be able to borrow up to 50%, but the more capital we have the less we need from the bank.



Do

There are plenty of ways to get involved practically. We can use the varied skills and experience in our church family to anticipate our activities in the new building and decide how to equip it to best meet our needs.

For details on getting involved (and more) there is up-to-date information on the website: www.westlakelausanne.com/building-campaign



Our New Home

a building to

Gather as a church family

Grow in faith and number

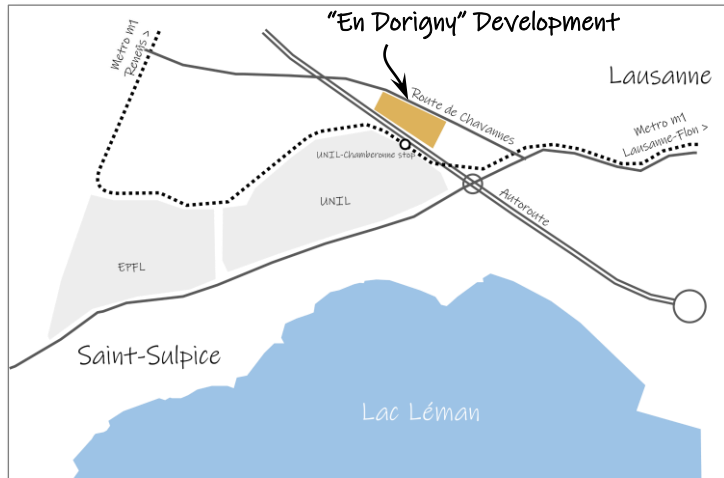
Go spread the good news



Westlake Church Lausanne
Rooted in the Gospel • Radical Transformation

Where?

What?

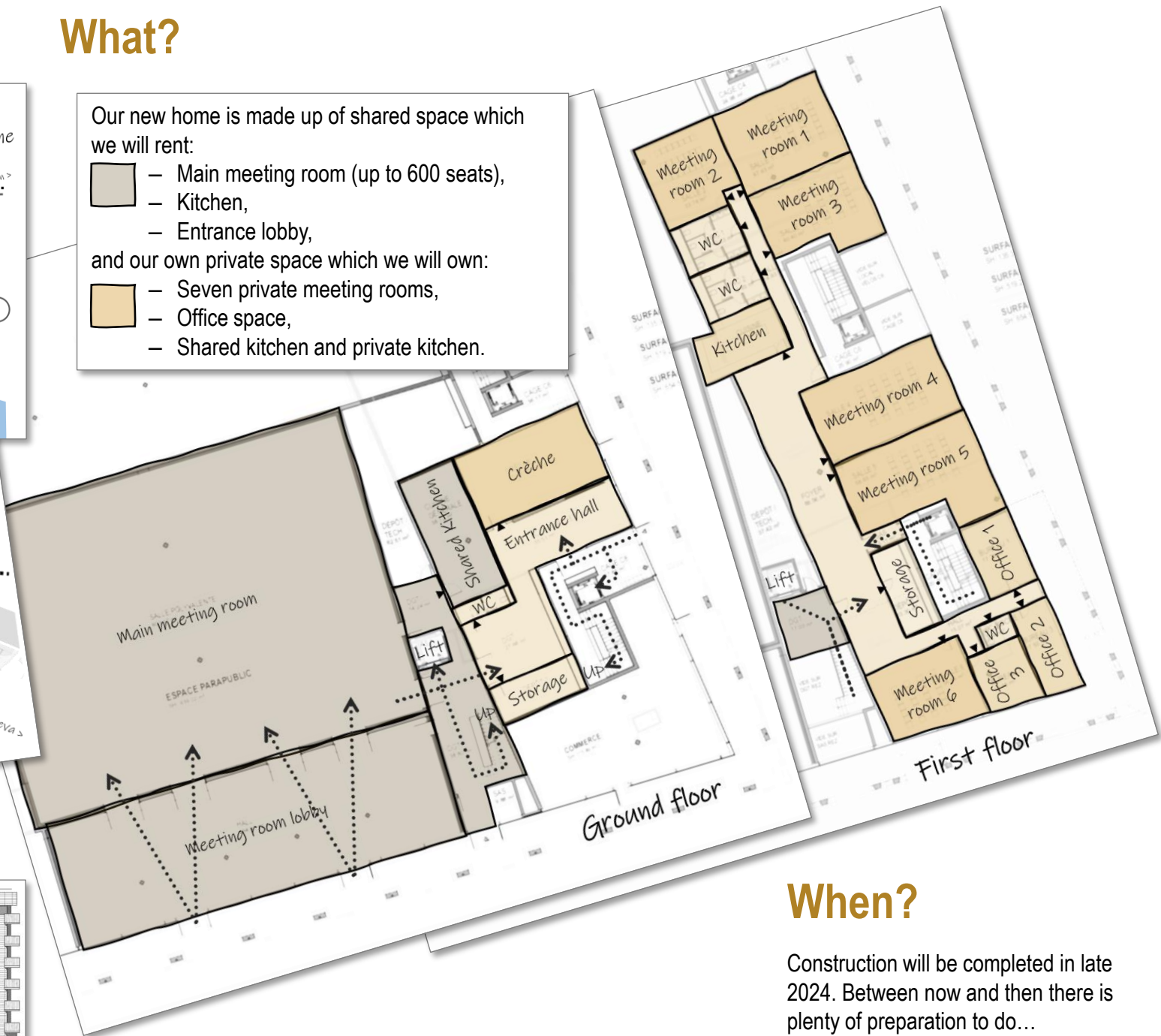
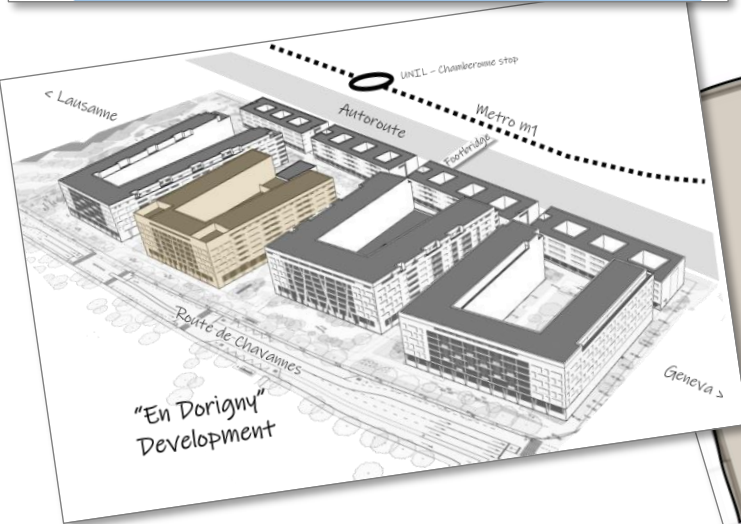


Our new home is made up of shared space which we will rent:

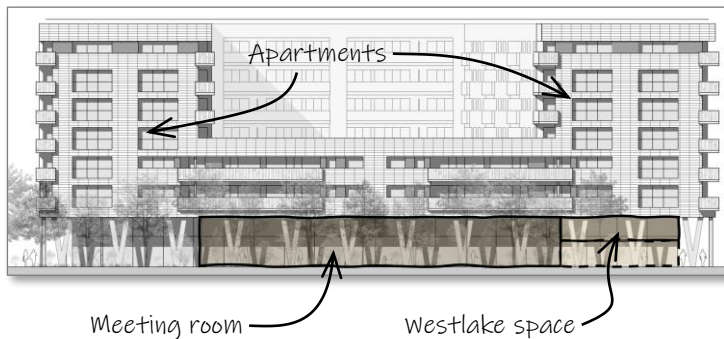
- Main meeting room (up to 600 seats),
- Kitchen,
- Entrance lobby,

and our own private space which we will own:

- Seven private meeting rooms,
- Office space,
- Shared kitchen and private kitchen.



The building



When?

Construction will be completed in late 2024. Between now and then there is plenty of preparation to do...

