

CHIPPEWA C, E, G, & H CP

lakeside efficiency



↑ 8 Cabins; C, G, & H: 2 rooms,
E: 3 rooms

Unit E: 2nd floor unit

🕒 Located along the lake near the point

🚿 Bathroom with tub/shower combo

✚ Efficiencies including a full kitchen with stove, microwave, refrigerator, and toaster oven

🔥 All units have fire pits

♿ No handicap rooms

Beds & Capacity by Unit

Units C, F, & H: 2 twin beds can be converted into a king bed upon prior notice.

	Unit	C	E	G	H
Beds	Twin	3	1	2	2
	Bunk		1		
	Double	1	2	1	
	Queen				1
	King				
Capacity	Minimum	3	4	3	3
	Normal	5	7	4	4
	Maximum	5	8	5	5

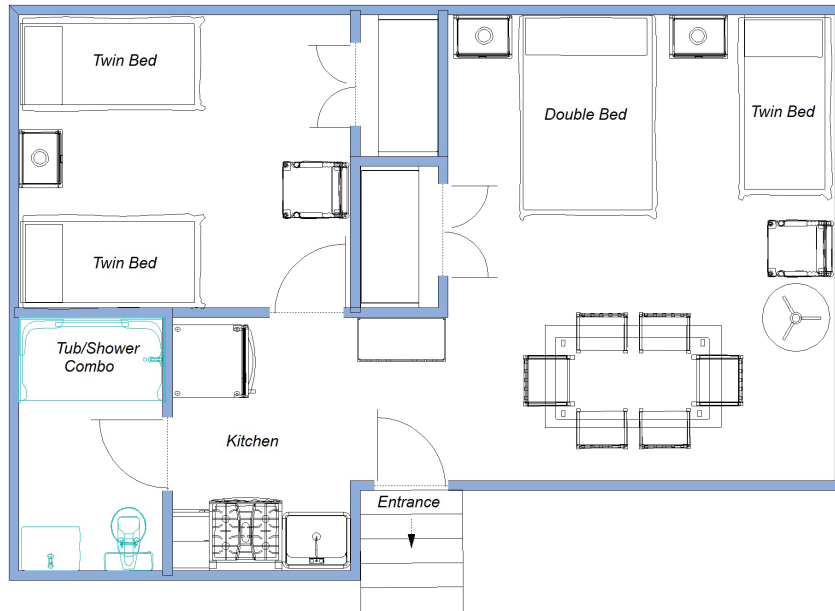
Summer 2024 Pricing

Includes maid service but NO MEALS. Optional meal plans in either dining room available. All non-efficiency units have meals on the Hill. Gratuities for Housekeepers not included.
No single occupancy.

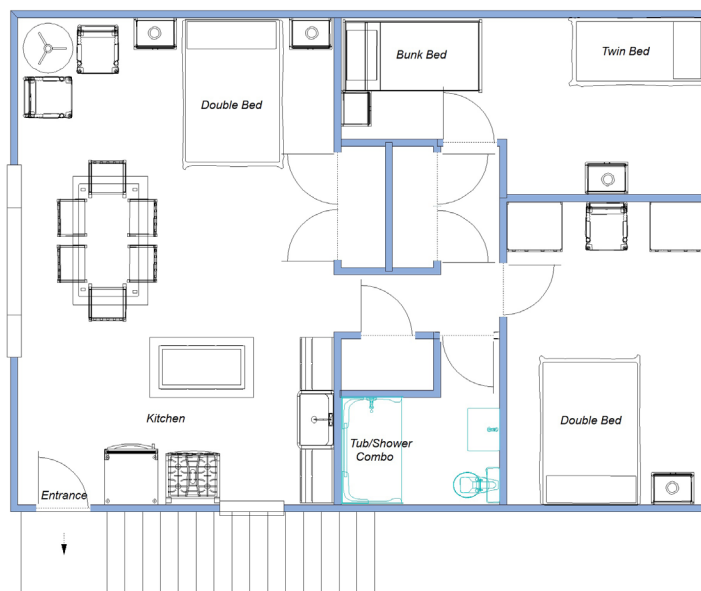
C, G, H	Weeks 1, 8, & 9	\$2,107.00 per week	\$175.00 per week, per person over 4 occupants
	Weeks 2, 3, & 7	\$2,264.50 per week	\$175.00 per week, per person over 4 occupants
	Weeks 4, 5, & 6	\$2,338.00 per week	\$175.00 per week, per person over 4 occupants
Unit C does not require additional fee for a 5th occupant			
E	Weeks 1, 8, & 9	\$2,919.00 per week	\$175.00 per week, per person over 7 occupants
	Weeks 2, 3, & 7	\$3,146.50 per week	\$175.00 per week, per person over 7 occupants
	Weeks 4, 5, & 6	\$3,248.00 per week	\$175.00 per week, per person over 7 occupants

CHIPPEWA

Unit C
Approximately 447 square feet

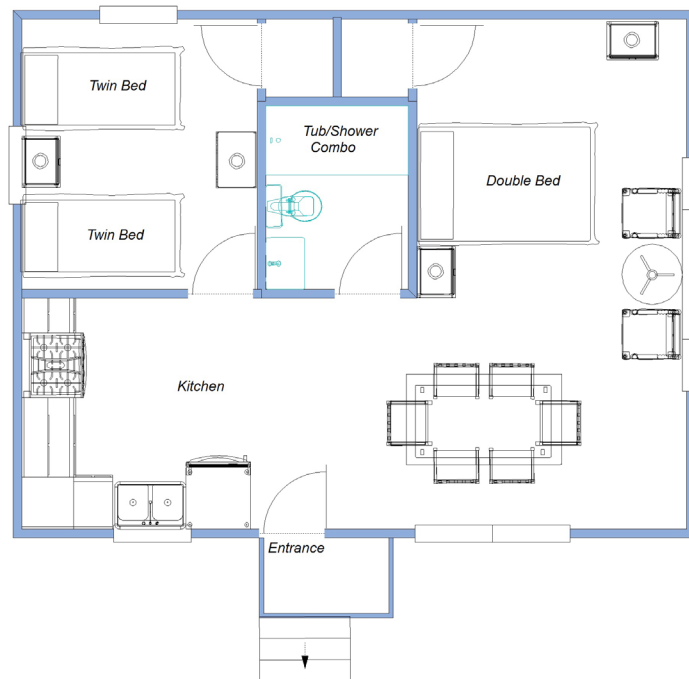


Unit E: Upstairs
Approximately 730 square feet



CHIPPEWA

Unit G
Approximately 500 square feet



Unit H
Approximately 500 square feet

