

ISLOTTA A, E, & F

Lakeside efficiency

IS



- 🏠 Cabins; 3 rooms,
- 🕒 Located along the lake near the point
- 🚿 Tub/shower combo

- ✚ Efficiencies include a full kitchen with stove, microwave, refrigerator, and toaster oven
- 🔥 All have fire pits
- ♿ No handicap rooms

Beds & Capacity by Unit

Units E: 2 twin beds can be converted into a king bed upon prior notice.

	Unit	A	E	F
Beds	Twin	2	2	2
	Bunk			
	Double	1	1	1
	Queen	1	1	1
	King			
Capacity	Minimum	4	4	4
	Unit G: 2 Adult Rates Included in Minimum			
	Normal	6	6	6
	Maximum	8	8	8

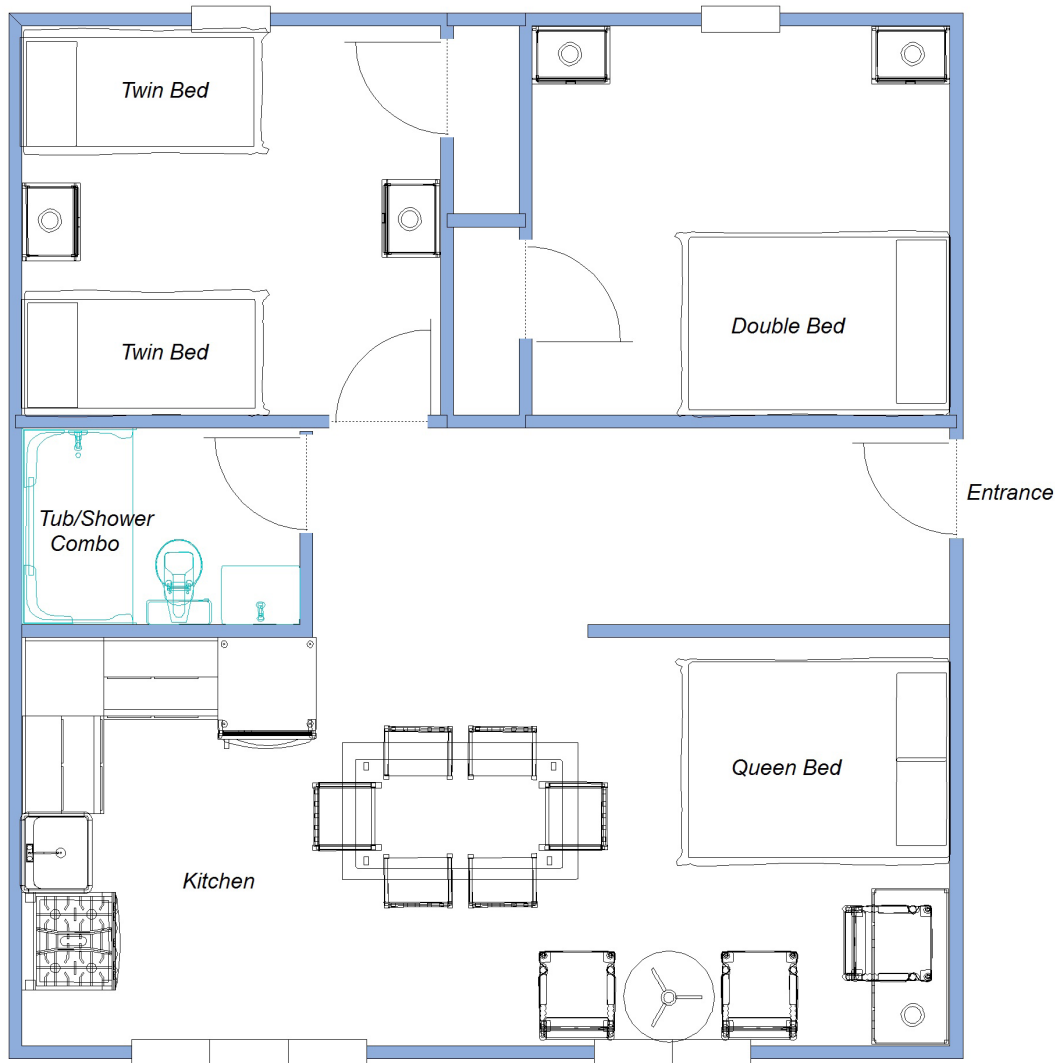
Summer 2024 Pricing

Includes maid service but NO MEALS. Optional meal plans in either dining room available. All non-efficiency units have meals on the Hill. Gratuities for Housekeepers not included. No single occupancy.

Weeks 1, 8, & 9	\$2,919.00 per week	\$175.00 per week, per person over 6 occupants
Weeks 2, 3, & 7	\$3,146.50 per week	\$175.00 per week, per person over 6 occupants
Weeks 4, 5, & 6	\$3,248.00 per week	\$175.00 per week, per person over 6 occupants

ISLOTTA

Unit A
Approximately 610 square feet



Lake Pleasant

ISLOTTA

Unit E



Unit F Approximately 626 square feet

