

WICHITA 11 & 21

beachfront efficiency

WH



- 🏠 Lodge; efficiency units
- 🕒 Located on the beachfront next to Arapaho
- 🚿 Bathroom with tub/shower combo

- ✚ Efficiency units including a full kitchen with stove, microwave, refrigerator, coffee pot, and toaster oven
- 🔥 One shared fire pit next to building
- ♿ No handicap rooms

Beds & Capacity by Unit

	Unit #	11	21
Beds	Twin	2	1
	Bunk		1
	Double		
	Queen	1	1
	King	1	
Capacity	Minimum	3	3
	Normal	6	5
	Maximum	7	5

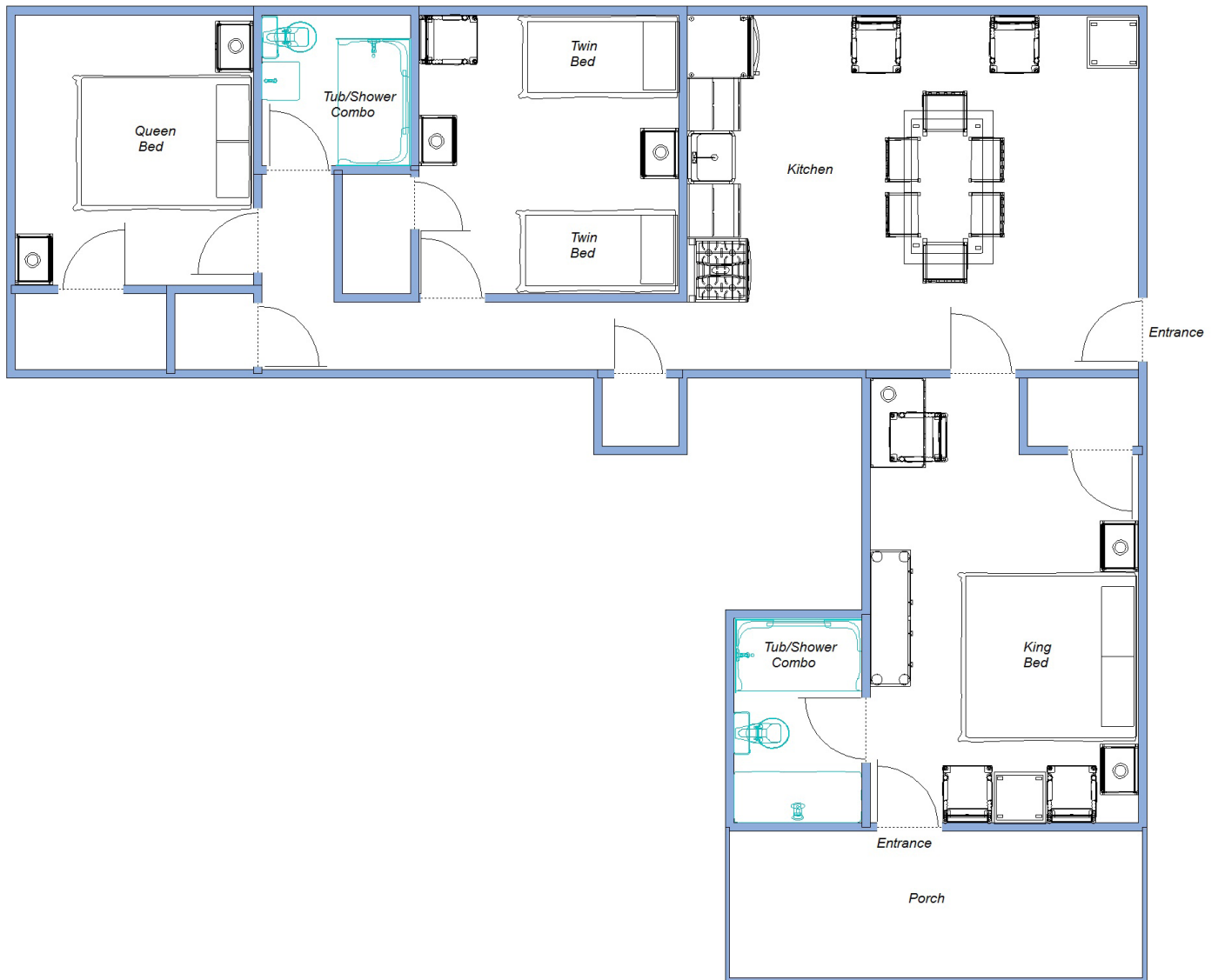
Summer 2024 Pricing

Includes maid service but NO MEALS. Optional meal plans in either dining room available. All non-efficiency units have meals on the Hill. Gratuities for Housekeepers not included. No single occupancy.

11	Weeks 1, 8, & 9	\$2,975.00 per week	\$175.00 per week, per person over 6 occupants
	Weeks 2, 3, & 7	\$3,206.00 per week	\$175.00 per week, per person over 6 occupants
	Weeks 4, 5, & 6	\$3,311.00 per week	\$175.00 per week, per person over 6 occupants
21	Weeks 1, 8, & 9	\$2,863.00 per week	Maximum 5, no additional guests
	Weeks 2, 3, & 7	\$3,087.00 per week	Maximum 5, no additional guests
	Weeks 4, 5, & 6	\$3,185.00 per week	Maximum 5, no additional guests

WICHITA

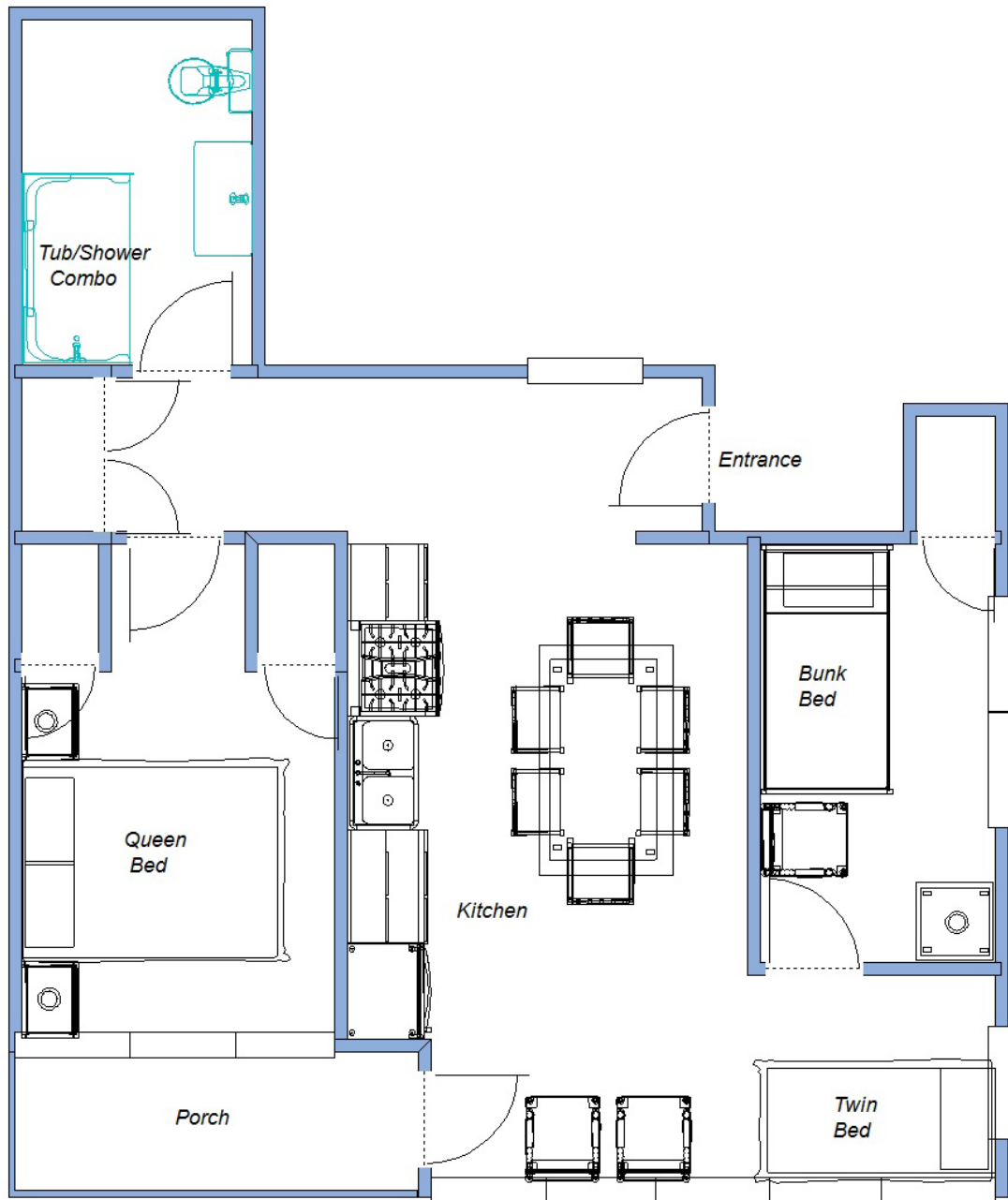
Unit 11
Approximately 915 square feet



Lake Pleasant

WICHITA

Unit 21: Upstairs
Approximately 580 square feet



Lake Pleasant