

# WICHITA 13 - 16 & 22 - 25 WH

## beachfront



- 📍 Lodge; 13, 14, 15, 22, 23, & 24: 1 room  
16 & 25: 2 rooms
- 🕒 Located on the beachfront next to Arapaho
- 🚻 Bathroom with tub/shower combo

- ✚ Porch
- 🔥 One shared fire pit next to building
- ♿ No handicap rooms

## Beds & Capacity by Unit

	Unit #	13	14	15	16	22	23	24	25
Beds	Twin								
	Bunk	1	1	1	1	1	1	1	1
	Double				1				1
	Queen		1	1	1	1	1	1	1
	King	1							
Capacity	Minimum	3	3	3	4	3	3	3	4
	Normal	4	4	4	6	4	4	4	6
	Maximum	5	5	5	6	5	5	5	6

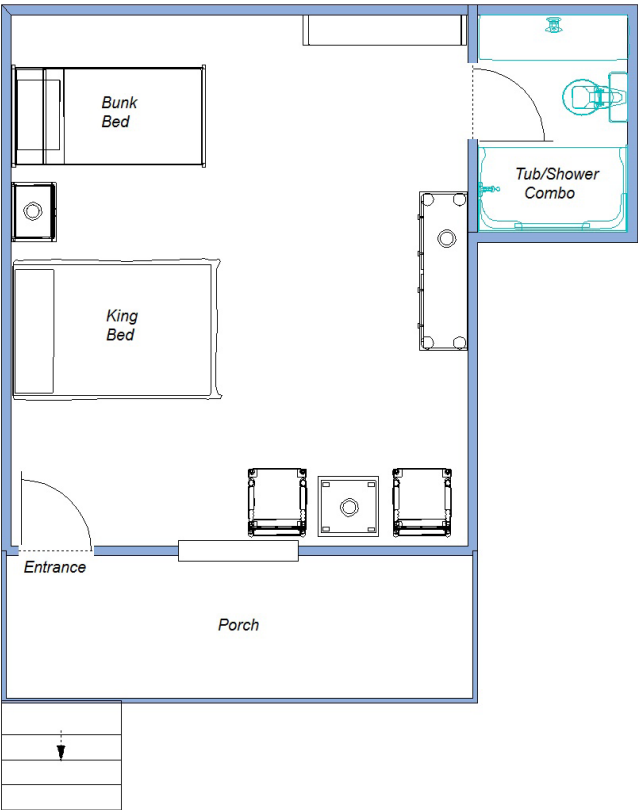
## Summer 2024 Pricing

No single occupancy.

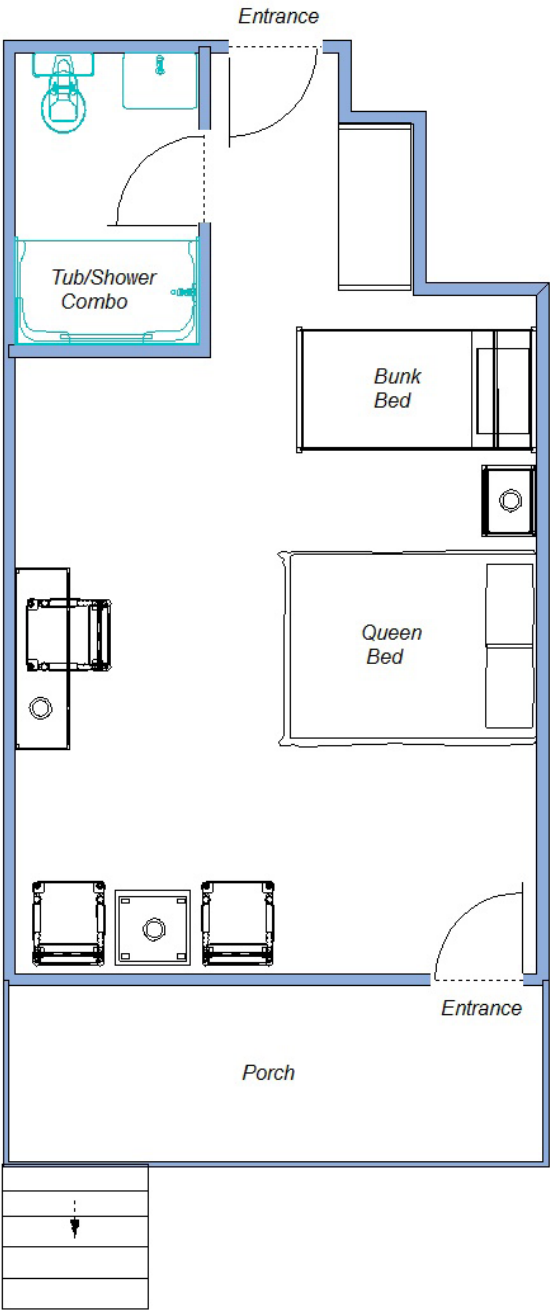
Week	Adult	7 - 13 yr old	1 - 6 yr old
Weeks 1, 8, & 9	\$1,074.50	\$504.00	\$108.50
Weeks 2, 3, & 7	\$1,151.50	\$542.50	\$115.50
Weeks 4, 5, & 6	\$1,197.00	\$567.00	\$122.50

# WICHITA

Unit 13  
Approximately 310 square feet



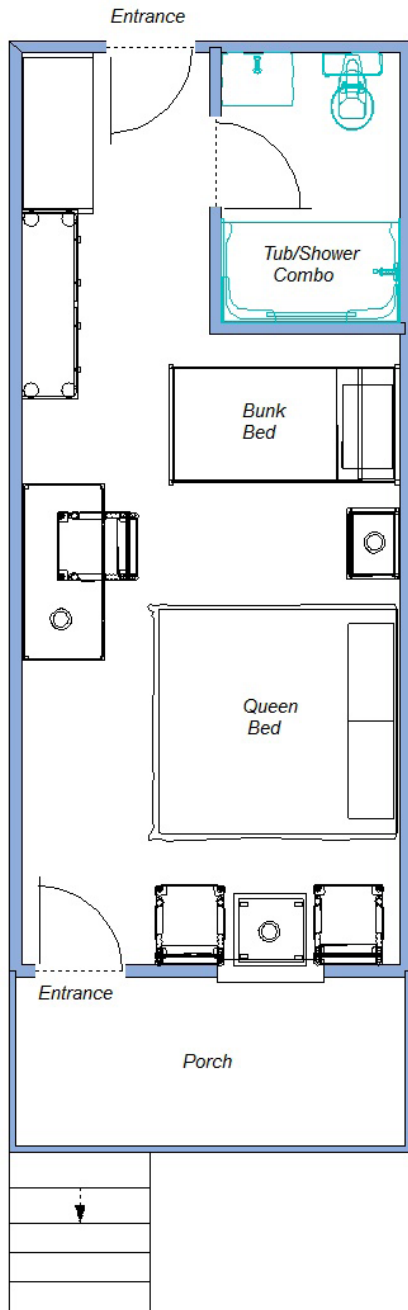
Unit 14  
Approximately 354 square feet



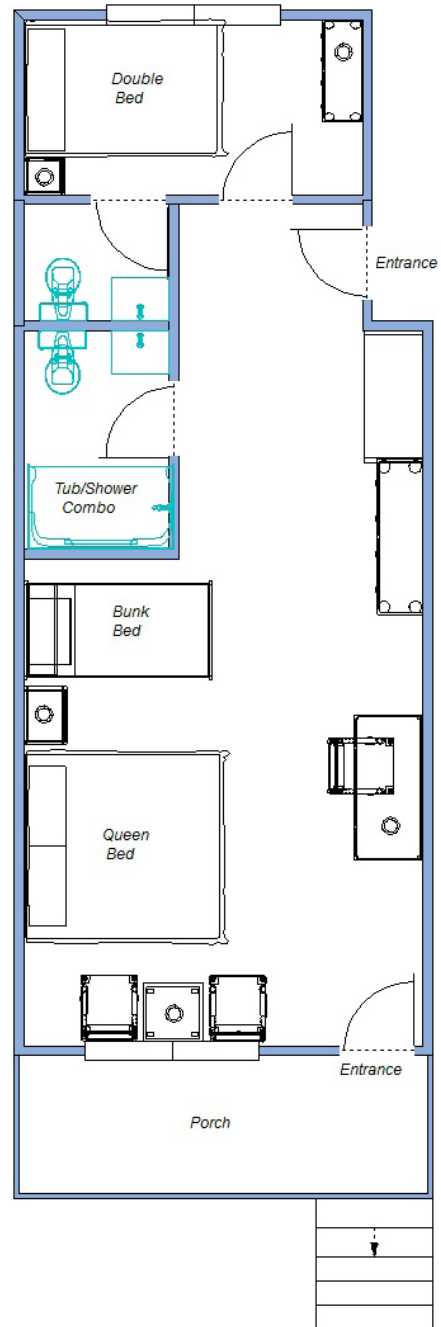
Lake Pleasant

# WICHITA

Unit 15  
Approximately 273 square feet



Unit 16  
Approximately 490 square feet

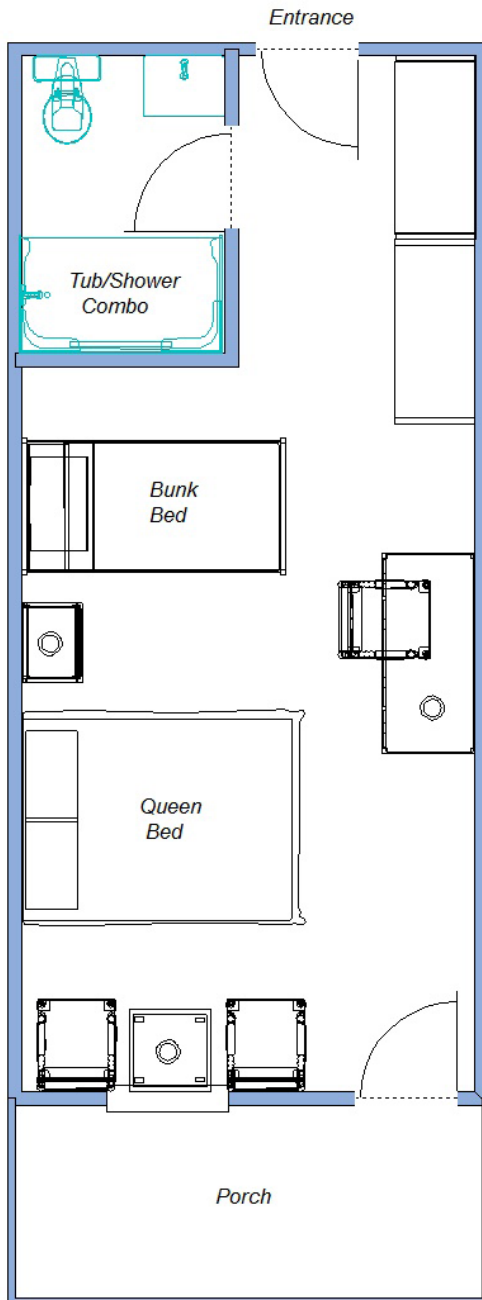


Lake Pleasant

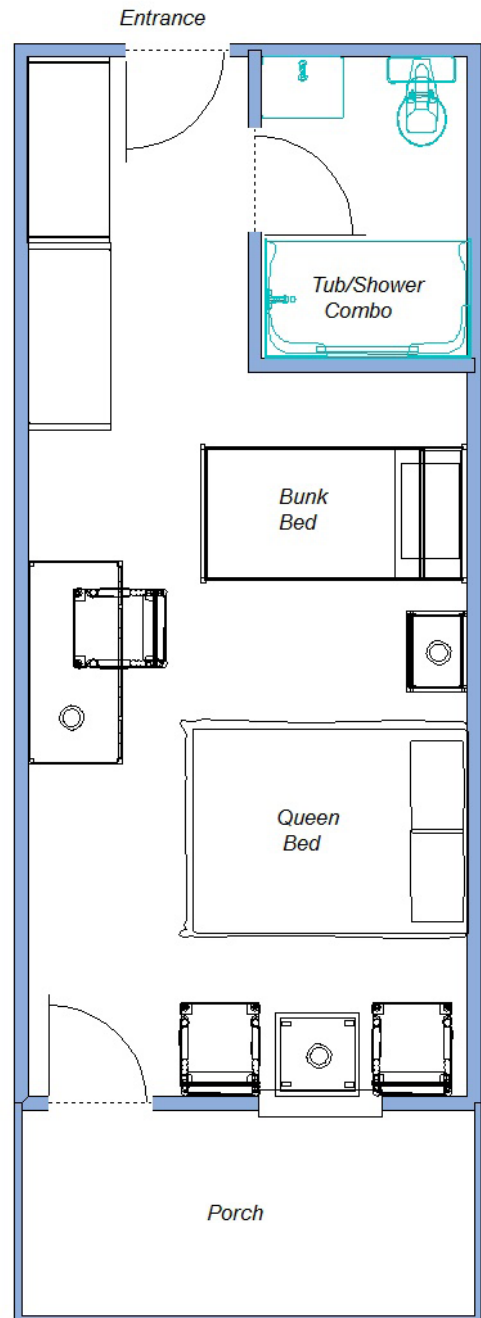
# WICHITA

Lake Pleasant

Unit 22: Upstairs  
Approximately 285 square feet

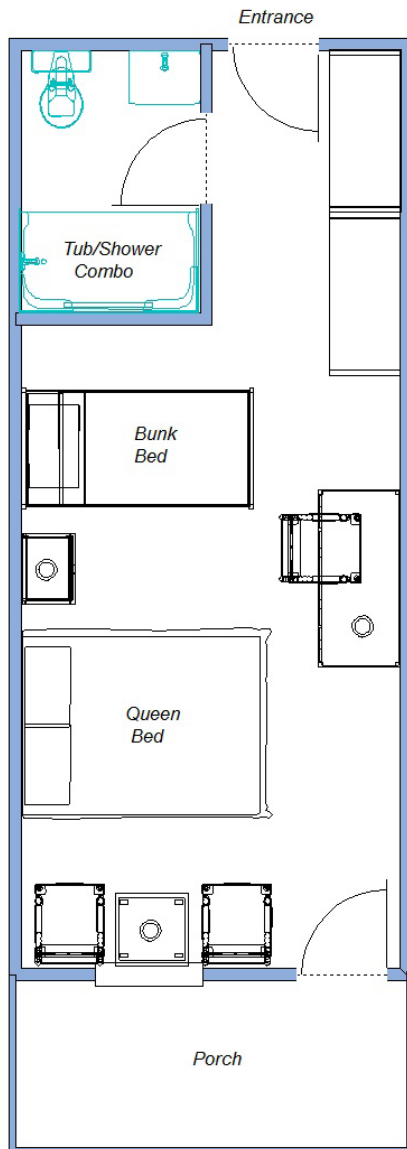


Unit 23: Upstairs  
Approximately 285 square feet



# WICHITA

Unit 24: Upstairs  
Approximately 280 square feet



Unit 25: Upstairs  
Approximately 385 square feet

