

CHIPPEWA A, B, D, & F CP

lakeside



- ↑ Cabins; A, & B: 2 rooms,
D: 1 room, F: 3 rooms
- 🕒 Located along the lake near the point
- 🚻 Bathroom with tub/shower combo,
Unit A: Bathroom with shower only

- ✚ View of lake
- 🔥 All units have fire pits
- ♿ No handicap rooms

Beds & Capacity by Unit

Units C, F, G, & H: 2 twin beds can be converted into a king bed upon prior notice.
Unit D: King bed can be converted into 2 twin beds upon prior notice.

	Unit	A	B	D	F
Beds	Twin	1	2		3
	Bunk				
	Double	1			2
	Queen				
	King		1	1	
Capacity	Minimum	2	2	NA	5
	Normal	3	4	2	7
	Maximum	4	5	3	7

Summer 2024 Pricing

Unit D: Contact Registrar for single occupancy rates.
Units A, B, & F: No single occupancy.

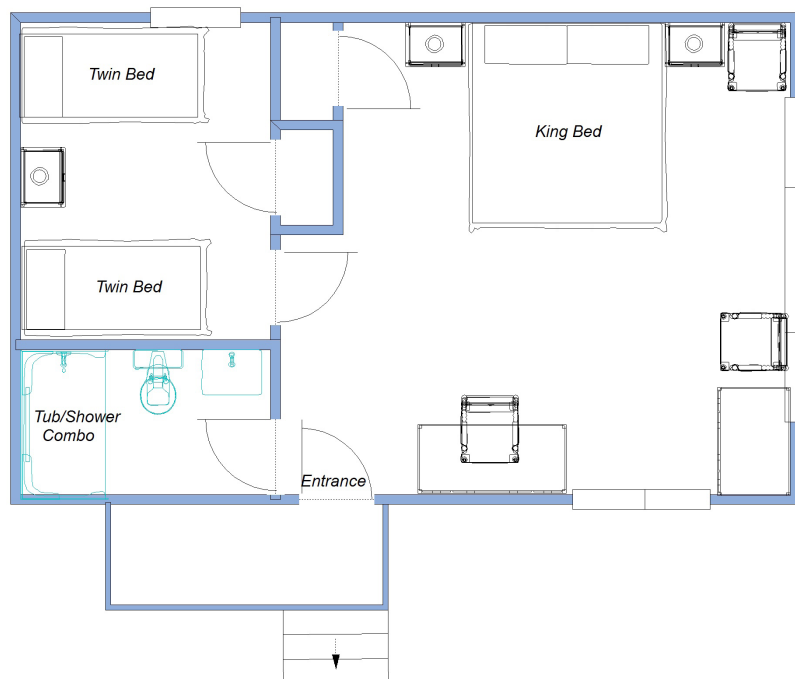
Week	Adult	7 - 13 yr old	1 - 6 yr old
Weeks 1, 8, & 9	\$1,130.50	\$518.00	\$115.50
Weeks 2, 3, & 7	\$1,225.00	\$556.50	\$122.50
Weeks 4, 5, & 6	\$1,260.00	\$581.00	\$129.50

CHIPPEWA

Unit A
Approximately 238 square feet

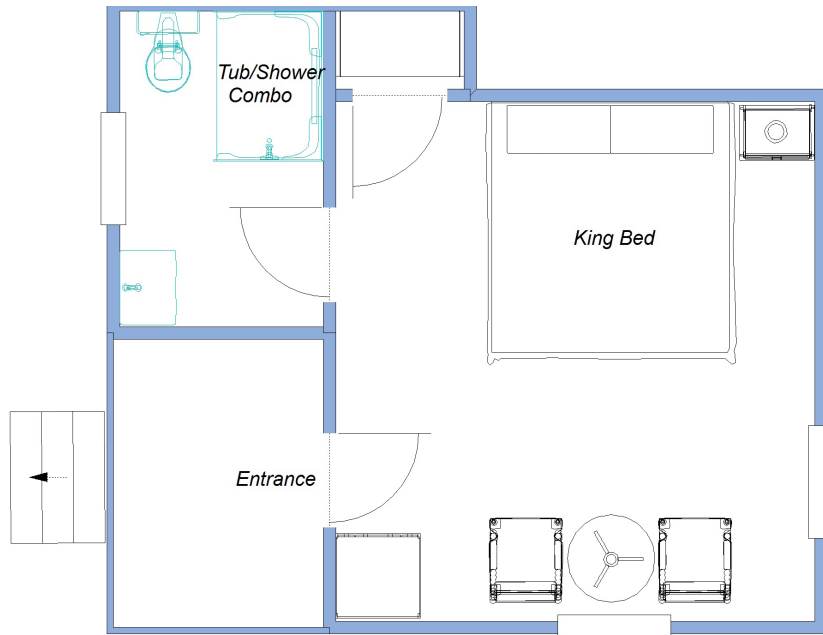


Unit B
Approximately 412 square feet



CHIPPEWA

Unit D
Approximately 222 square feet



Unit F
Approximately 410 square feet

