

# CHIPPEWA A, B, D, & F CP

---

## lakeside



- 🏠 Cabins; A, & B: 2 rooms, D: 1 room, F: 3 rooms
- 🕒 Located along the lake near the point
- 🚻 Bathroom with tub/shower combo,  
Unit A: Bathroom with shower only

- ✚ View of lake
- 🔥 All units have fire pits
- ♿ No handicap rooms

# Chippewa: Beds & Capacity by Unit

Units C, F, G, & H: 2 twin beds can be converted into a king bed upon prior notice.

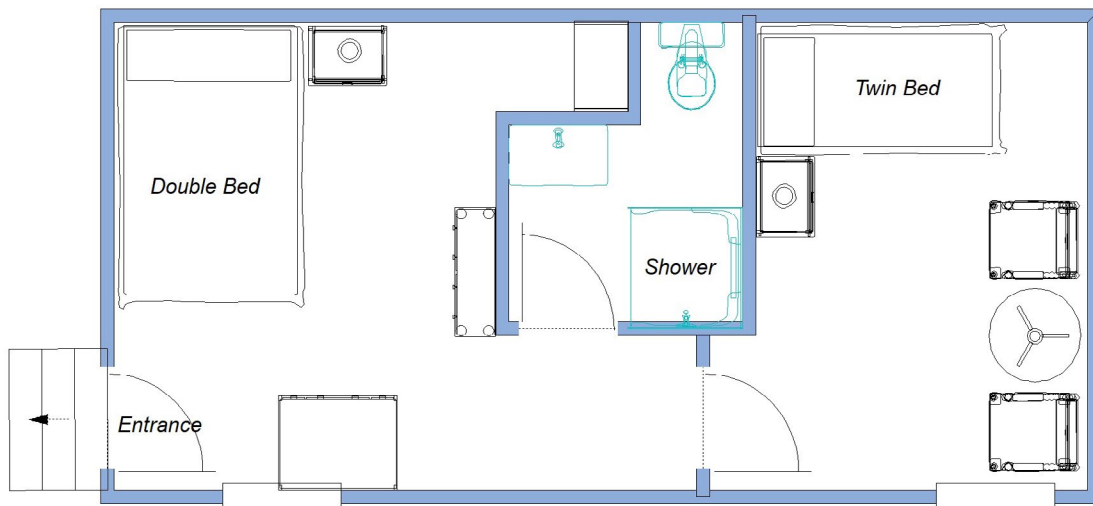
Unit D: King bed can be converted into 2 twin beds upon prior notice.

	Unit	A	B	D	F
Beds	Twin	1	2		3
	Double	1			2
	King		1	1	
Maximum Occupancy		4	5	3	7

## Chippewa: Floor Plans

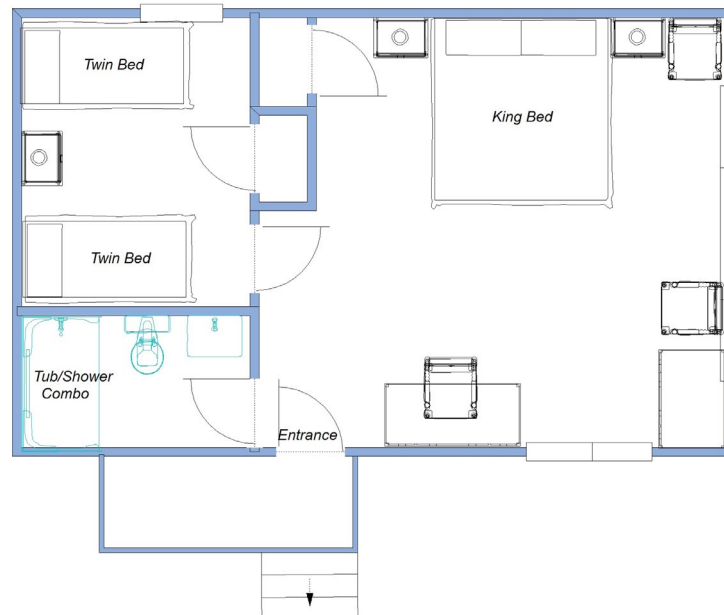
### Unit A

Approximately 238 square feet



### Unit B

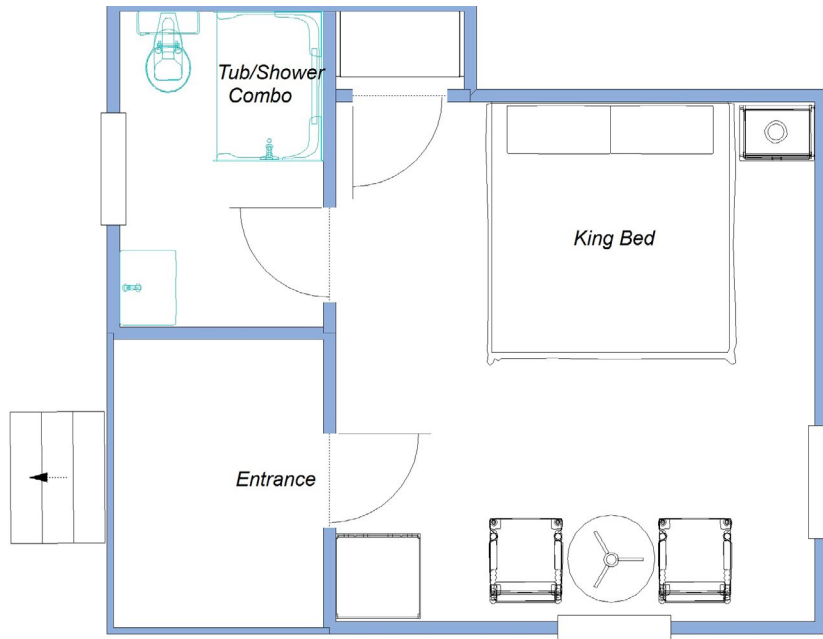
Approximately 412 square feet



# Chippewa: Floor Plans

## Unit D

*Approximately 222 square feet*



## Unit F

*Approximately 410 square feet*

