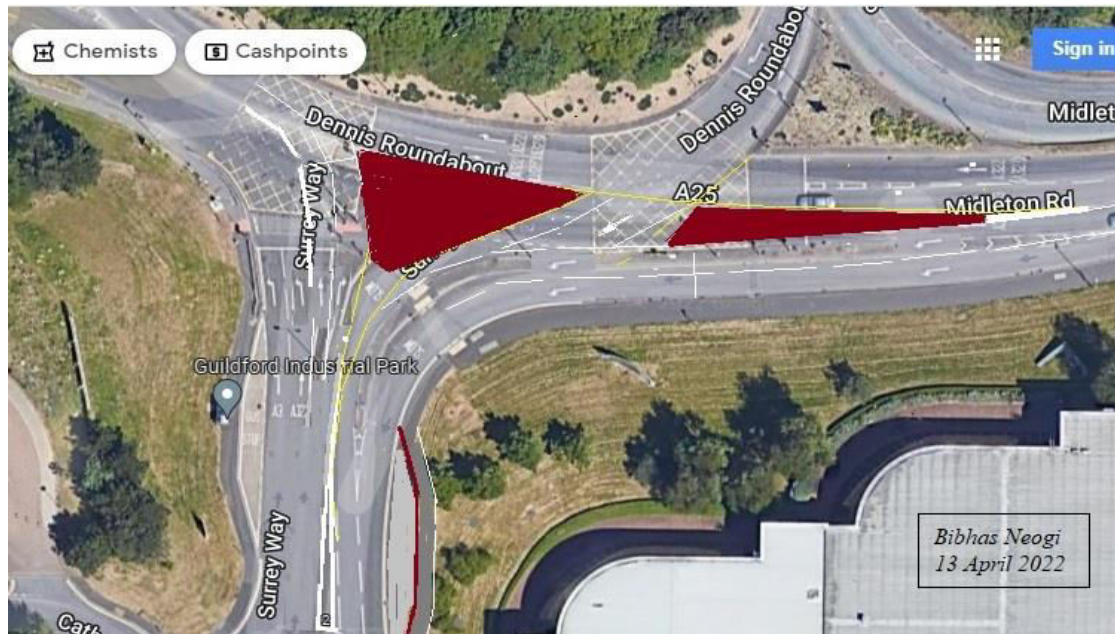
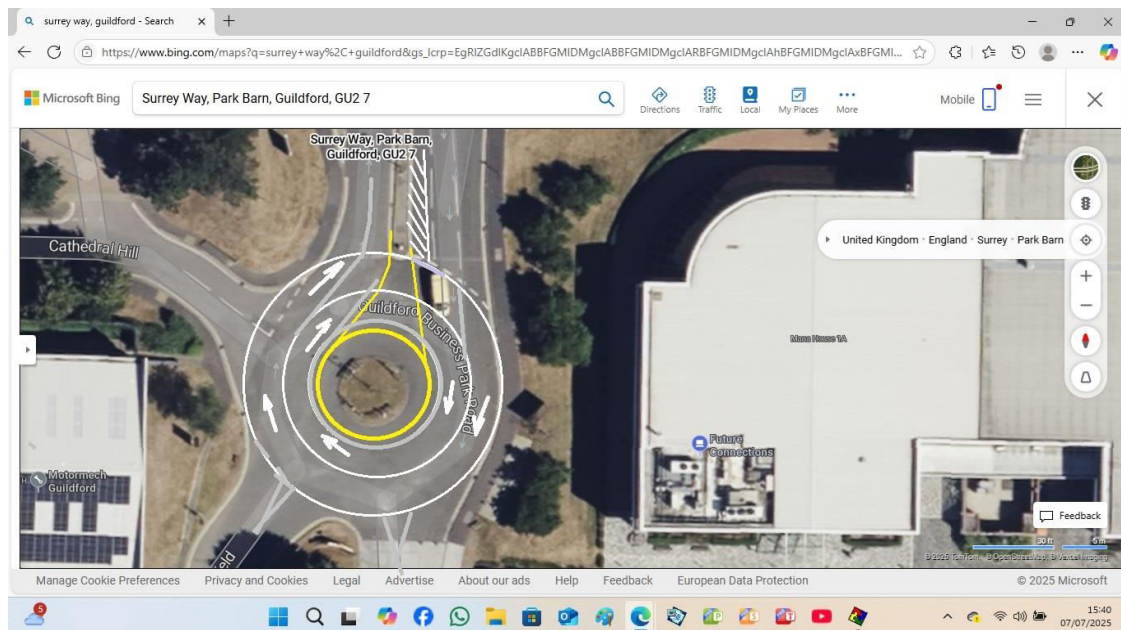


**Altered Dennis roundabout to improve flow into the southbound A3 on-slip from both the A25 and the A322 Worplesdon Road . Yellow boxes that are difficult for motorists to avoid encroaching are removed.**



**All traffic routed via Surrey Way for the A3 southbound on-slip**



**Surrey Way roundabout altered into a turn around. Exiting local traffic joins Surrey Way and proceeds to the A3, A322, A25 or turns around to re-enter Surrey Way.**