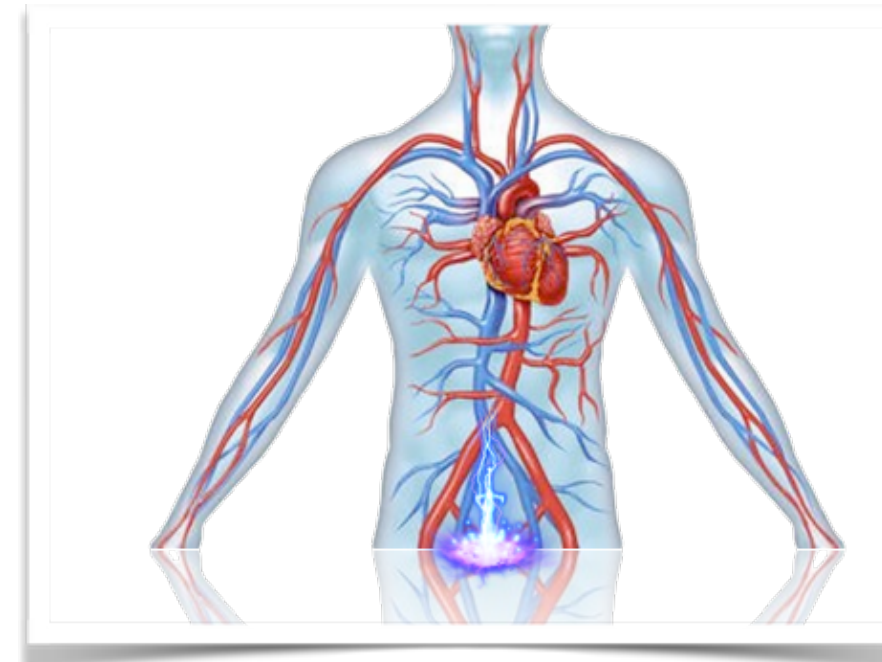




For who?

Package C



Heart & blood vessels

- * Those who suffer from; 'long covet', persistent 'Corona complaints'
- * inflammation sensitivity, cold/flu, jaw or wound inflammation etc.
- * thick (Oedema) and or aching legs, cold hands and or feet,
- * tingling and or limb weakness,
- * rapid loss of breath, lack of oxygen or other breathing difficulties,
- * blood clotting, slow flow of blood through the veins,
- * prevention weakened cerebral blood flow,
- * heart rhythm disturbances, chest pain,
- * blood pressure imbalance,
- * cholesterol imbalance,
- * blood sugar imbalance,
- * together with persistent fatigue and low in energy