

Tsuboi P2 Installation Progress

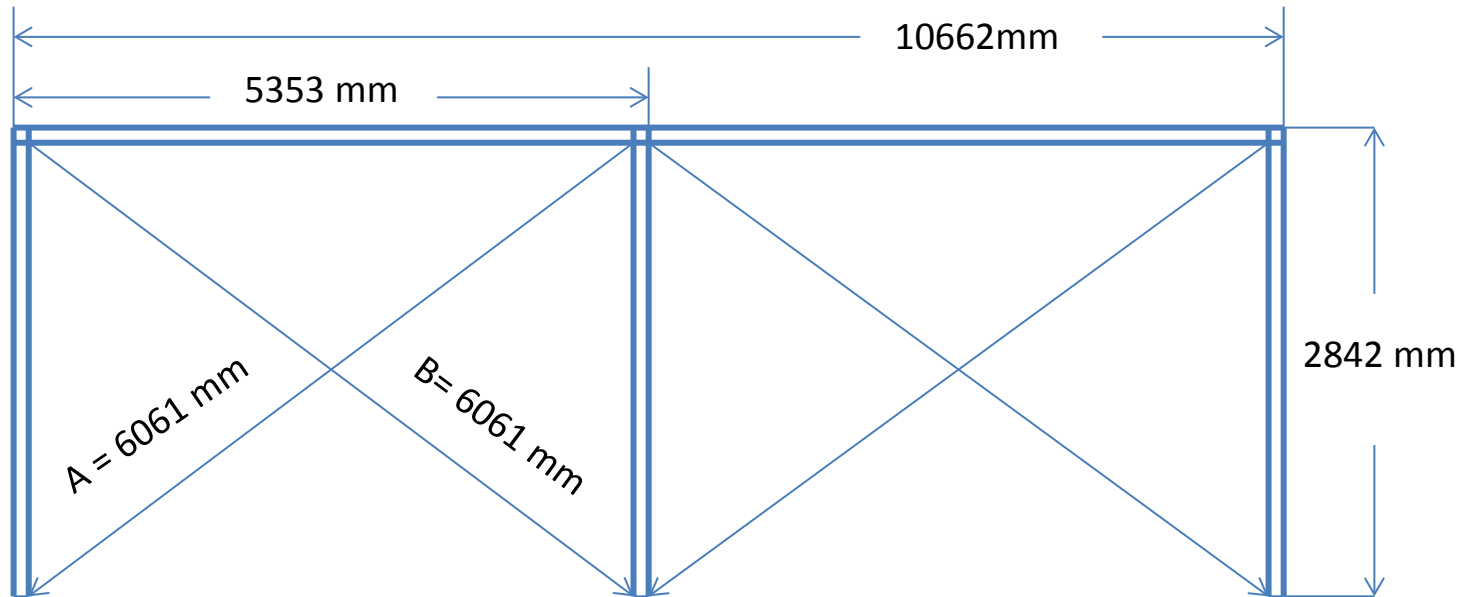
by Pongsak

3 P60- P2 Incubators



2 Rooms 2 Basic and 1 SAO

P60 - Base Channel

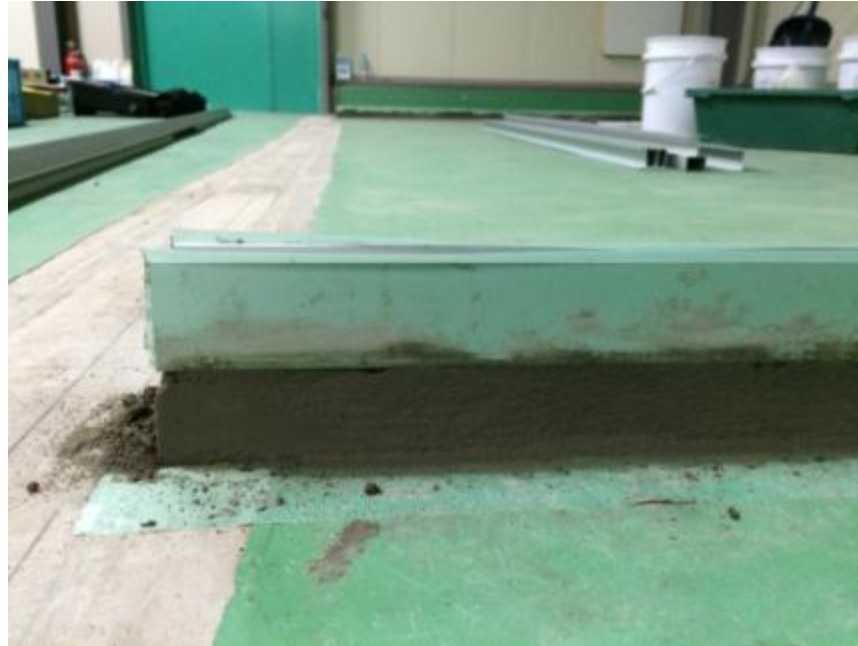


•TIP

If Base Channel not square will be effect to

- 1) Difficult to Install Side Wall
- 2) Difficult to Install Roof Panel
- 3) Door Gap is Not Equal top to Bottom

Cement



Before Cement

Paste waterproof tape to base channel and floor

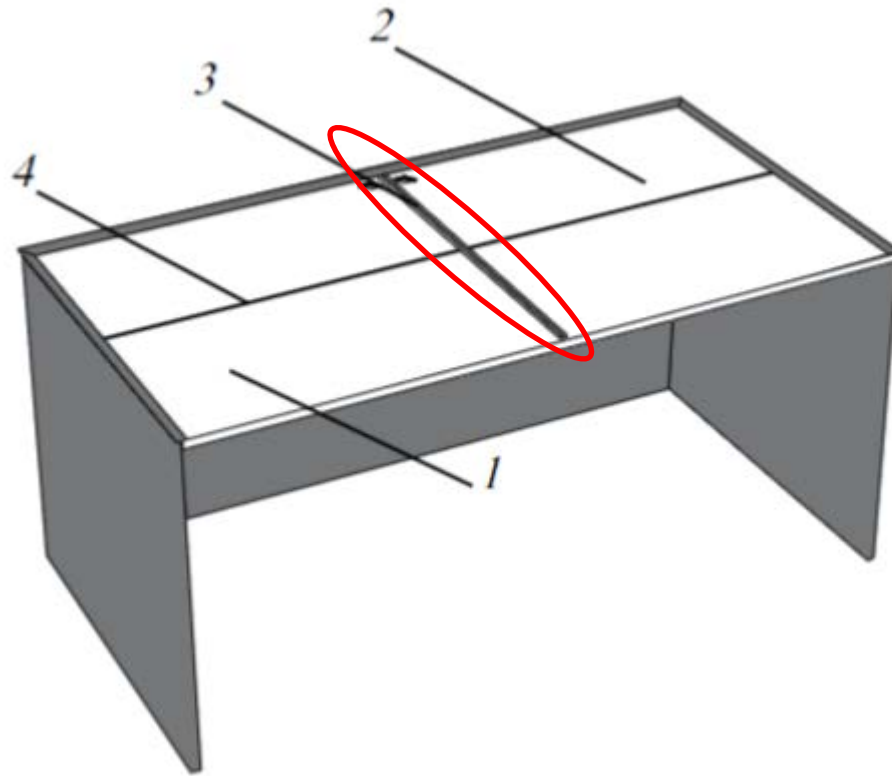
Side Wall Panel



Side Wall Panel

Make sure all side wall panels are vertical by use laser level check each panel during installation

Roof Panel



Silicone all inside extrusion , Install 2 rear roof panels then insert center roof extrusion and 2 front roof panels

Tip

- 1) Before installation force roof panel by hand at center roof extrusion side
- 2) Place rear damper to the holes (Not silicone) before install front roof panels

Console



- Push hot and cold water pipe down inside console
- Centre the console in front of the cabinet and support in an upright, but slightly forward tilted position.

Front Panels



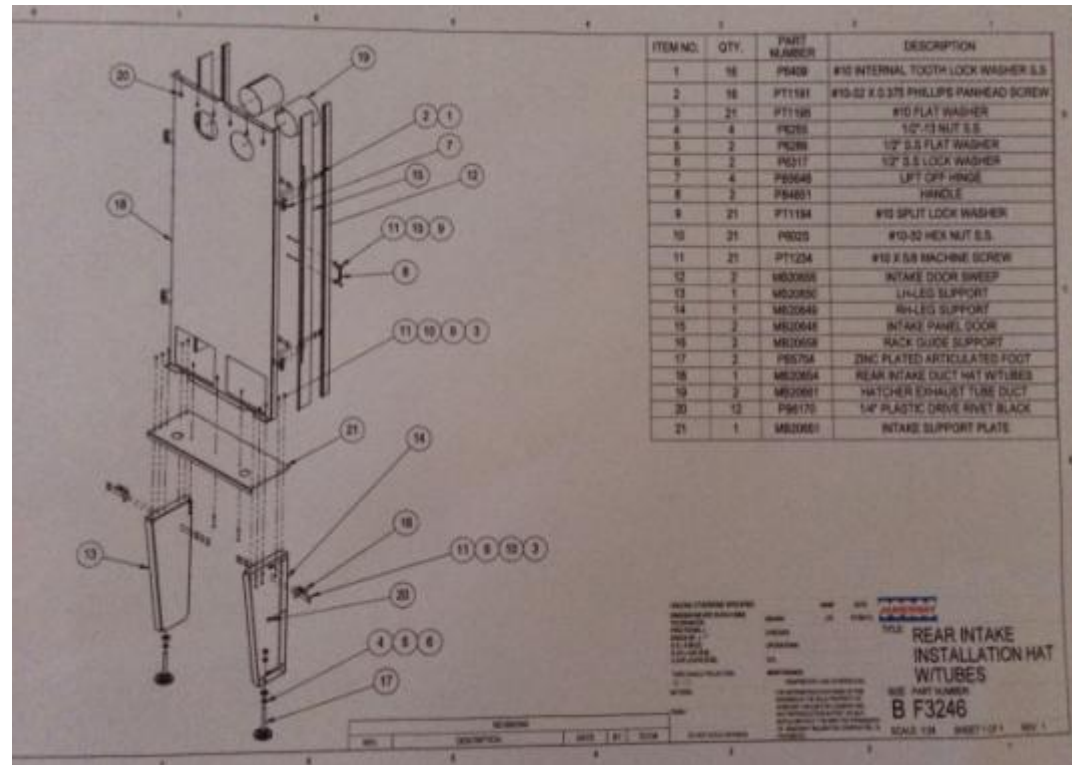
Line from front corner post extrusion left to right then install front panel , Adjust console position to same line with front panel

Doors



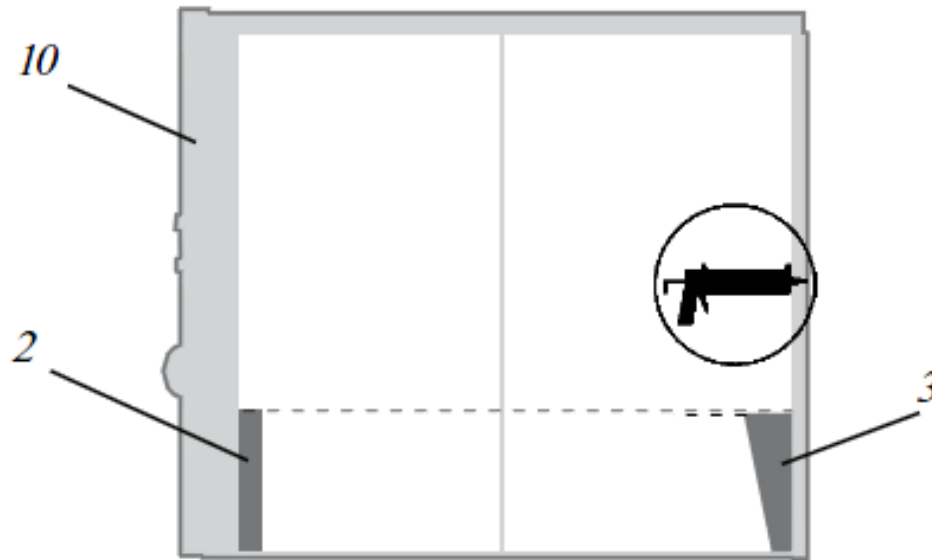
Adjust the door so that the console-door gap is equal top to bottom.

Rear Support and Intake Duct



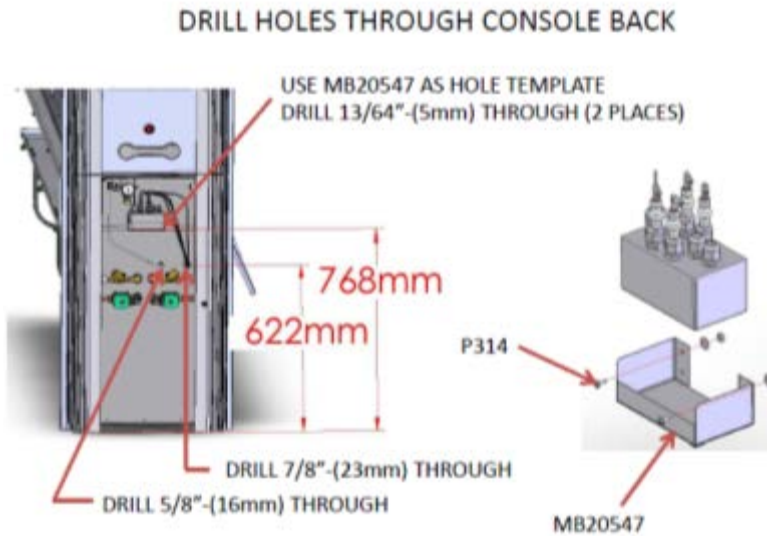
Measure from roof to ECU rear support = 1693 mm then fix ECU support with black drive rivet

Front Support



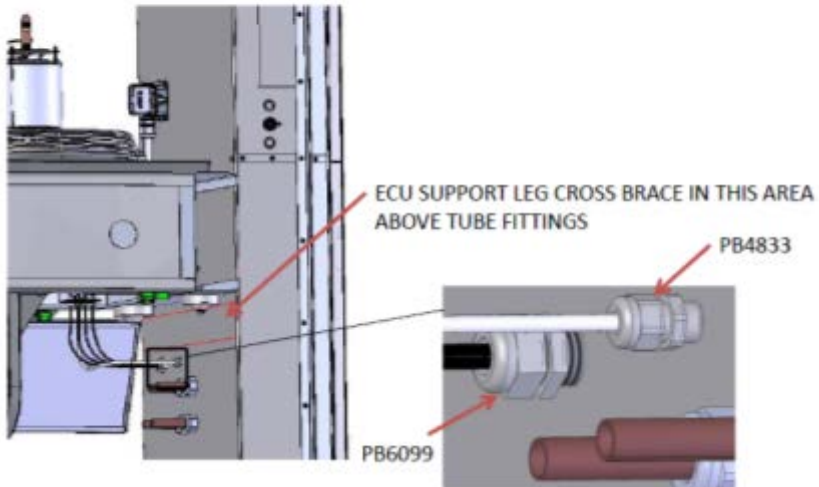
Ensure that the height of the rear support is 1/8 in. (2–3 mm) less than the height of the front support.

Humidification



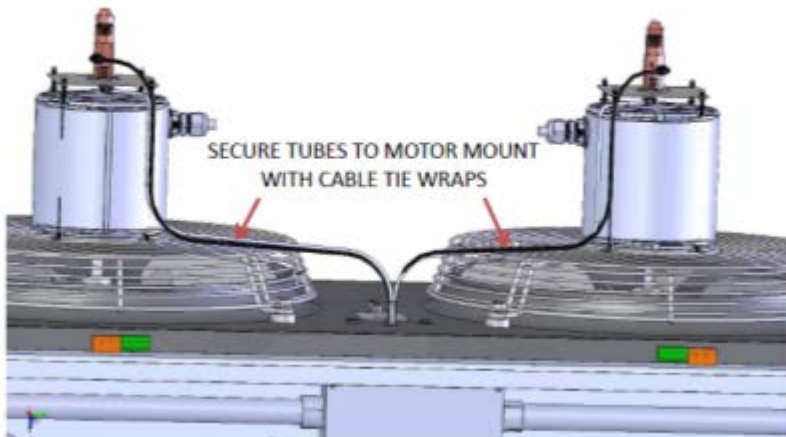
Humidification

TUBE ROUTING THROUGH BACK OF CONSOLE
(HEATING COILS AND SUPPORT LEG REMOVED FOR CLARITY)



Humidification

TUBE ROUTING THROUGH FAN ASSY



Light

