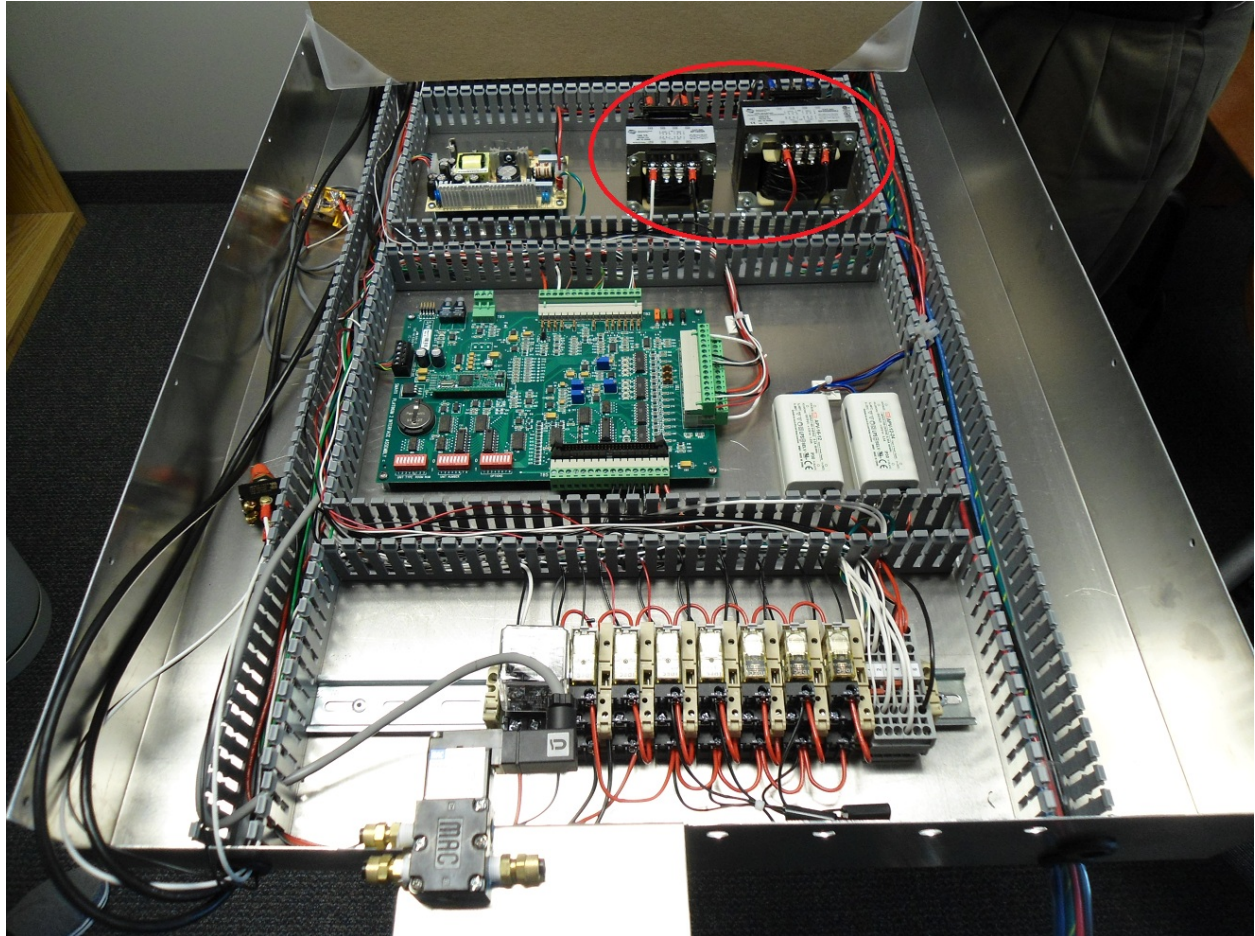


## Changing Transformer Jumpers for 380V Supply

In the following photo the two transformers where the jumpers need to be changed are circled red.



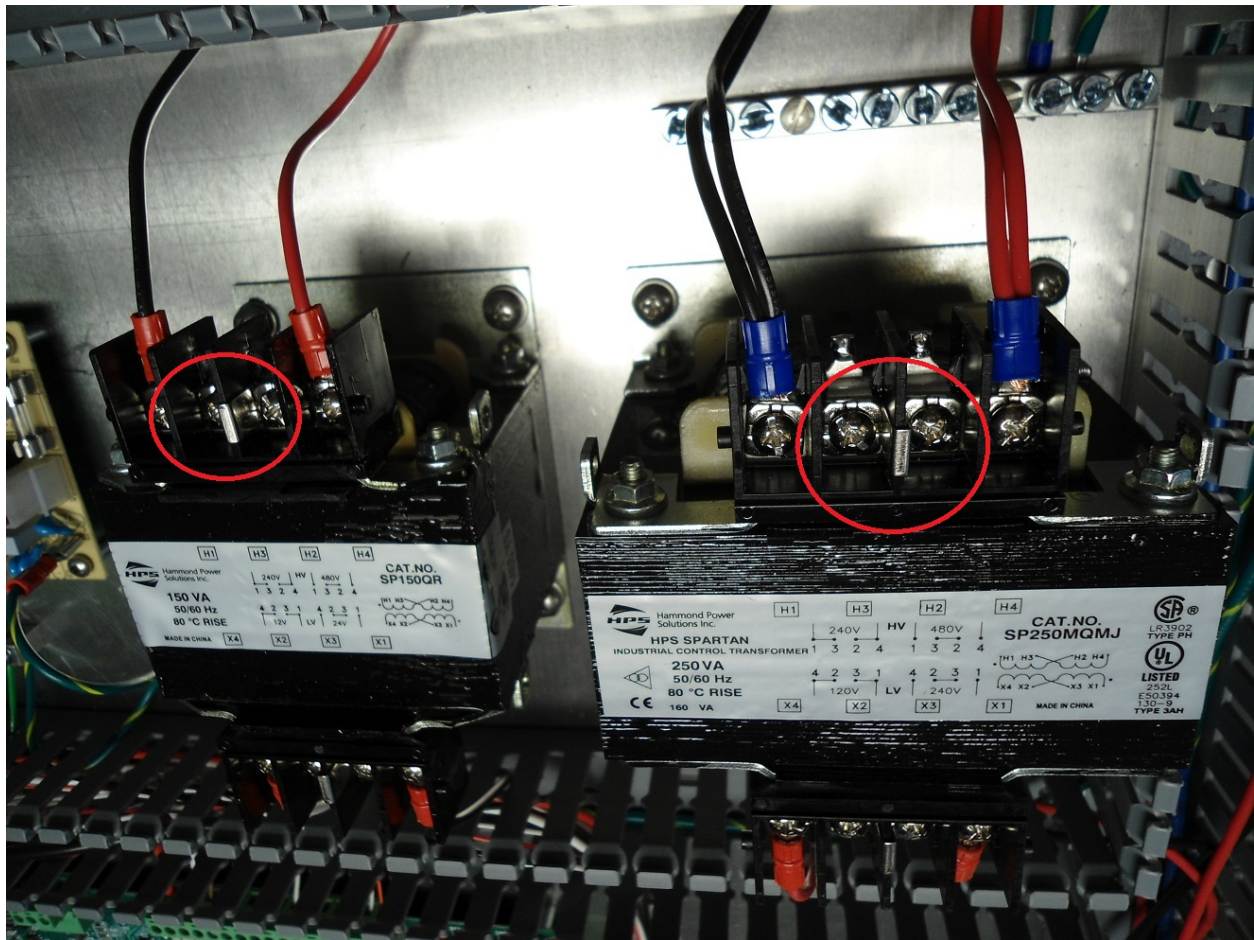
Locate the extra jumpers supplied inside parts bag.





Following photo shows the transformer jumpers as delivered from factory.

Each transformer has a single jumper mounted at the centre position on terminals H2 and H3.



Following photo shows the jumper configuration for 380V supply (220V phase to Neutral) circled in red.

Move the jumpers on each transformer to the H1 and H3 position, then add a second jumper from the parts bag to the H2 and H4 position.

Do not change the jumpers on the output terminals X1 to X4.

