



# Reference

Important note: Fairbanks eCatalogs, located on the [Intranet](#), are updated more frequently and are the best source for current product information.



---

## Standard Product Shipping Schedule - Notes

---

### Notes:

- All schedules are based from time of acceptance of formal order at Order Entry.
- Accessories have the same lead time as the corresponding scale.
- **Check with the Solutions Group for all modifications to standard product.**
- **Electronics and Hardware are not packaged for outdoor storage! Contact Solutions Group when this is required.**
- For any product requiring Export Packing add the following to the lead times:  
St. Johnsbury – 1 week  
Meridian – 2 weeks
- See pages 3 through 6 for shipping schedule of product.
- Cut-off time for orders is 3:00 P.M. Eastern Time.
- Lead times provided are based on single unit volume per item.
- Contact Customer Support for lead time when unit volume exceeds three (3) units per item. (six (6) for Omnicells, or two (2) for truck and rail).
- When Customer Support provides Omnicell lead time, it is based on availability at the time of the request and subject to availability at the time of order. Standard lead times are 8-12 weeks.

### Fairbanks Terms of Sale:


- Net 30 days from date of shipment.
- Equipment price due net 30 days from date of shipment of equipment with balance of order due net upon completion of installation.
- Other (define).
- Check with order or pay by credit card.

### Shipping Information Call:

Customer Service for **all products** — 800-451-4107

**\*Typical lead time may vary at times of heavy volume.  
Call Customer Service for the most accurate lead time.**

# Product Lead Times

Section	Product	FOB	Lead Time
<b>Bench Scales</b>			
	QuickSilver Series Platforms	St. J	2 days
	QuickSilver Intrinsically Safe	St. J	2 days
	NexWeigh Instrument	St. J	2 days
	NexWeigh Instrument with Ethernet TCP/IP	St. J	3 days
	FB2250 Series Instrument	St. J	2 days
	FB2255 Series Instrument	St. J	2 days
	Stainless Steel Bench Stand	St. J	2 days
	Series II	St. J	2 days*
	Series III	St. J	2 days*
	Series 5 Bench Scale	St. J	2 days
	Delta Series, 24 x 24	St. J	5 days
	Ultegra Series Parcel/Shipping Scale	St. J	1 day
	Ultegra <b>MAX</b> Parcel/Shipping Scale	St. J	2 days
	 Roller Conveyor Scale	St. J	5 weeks
	TeleWeigh Digital Health Scale	St. J	1 day
	Slimline Digital Health Scale	St. J	3 days
	Ultegra Series Health Scale	St. J	1 day
	Ultegra Baggage Scale	St. J	2 days

**Note: Contact Order Entry for lead time on multiple scale orders.**

## Counting Scales

Omega Counting Scales	St. J	1 day
-----------------------	-------	-------

## General Industrial

1100 Series	Meridian	2 days
1155 Series	Meridian	2 days
1124 Series	Meridian	2 days
BPP Series	Meridian	2 weeks

## Floor Scales


Yellow Jacket 3500 Series floor scales	St. J	2 days
Yellow Jacket floor scale kits	St. J	3 days
Yellow Jacket ramp, bumper guard, bolt-down plates	St. J	2 days
Yellow Jacket U-Shaped Floor Scale	St. J	2 days
Aegis Industrial Mild Steel floor scale kits	Meridian	1 to 2 days
Reliant	Meridian	1 day
Aegis Industrial Mild Steel (4' x 4' & 5' x 5')	Meridian	2 days
Aegis Industrial Mild Steel (all other sizes)	Meridian	6 days
Aegis Industrial, Stainless Steel (3' x 3', 4' x 4' & 5' x 5')	St. J	3 days
Aegis Industrial, Stainless Steel (all other sizes)	St. J	3 days
Aegis Industrial Mild Steel Accessories	Meridian	7 days
Aegis Industrial Stainless Steel Accessories	St. J	2 days
Aegis Lift Deck	St. J	2 weeks
Aegis Heavy Capacity	Meridian	4 weeks
Aegis Drum Scale (30" x 30" and all 30" accessories)	St. J	3 days
Aegis Drum Scale (38" x 38" and all 38" accessories)	St. J	2 weeks
Aegis Drum Scale with Backstop	St. J	3 days
Aegis Transport Scale	St. J	5 days
Aegis Xtreme-Duty Floor Scale	Meridian	4 weeks
Aegis Coil Scale	Meridian	4 weeks

***Floor Scales product modifications lead times on next page.***

# Product Lead Times

Section	Product	FOB	Lead Time
<b>Floor Scale Product Modifications — Mild &amp; Stainless Steel</b>			
3000-02	Floor Scale with Non-Standard Dimensions . . . . .	St. J/Meridian . . .	5 additional days
3001-02	Floor Scale with Smooth Deck . . . . .	St. J/Meridian . . . .	1 additional day
3002-02	Aegis Industrial Mild Steel with Stainless Steel hermetically sealed load cells . . . . .	Meridian . . . . .	1 additional day
3004-02	Aegis with ACC 2801 Intrinsic Safe Controller . . . . .	St. J/Meridian . . .	1 additional day
3005-02	Aegis with ACC 2802 Intrinsic Safe Controller . . . . .	St. J/Meridian . . .	1 additional day
3006-03	Ramps, Non-Standard Size . . . . .	St. J/Meridian . . .	7 additional days
3007-03	Pit Frames, Non-Standard Size . . . . .	St. J/Meridian . . .	3 additional days
3008-03	Bumper Guards, Non-Standard Size . . . . .	St. J/Meridian . . .	7 additional days
3009-03	Mild Steel Lifting Handles . . . . .	Meridian . . . . .	3 additional days
3010-03	SS Lifting Handles . . . . .	St. J. . . . .	3 additional days
3011-03	Ramps with Smooth Surface . . . . .	St. J/Meridian . . .	1 additional day
3012-03	Lower Capacity Load Cells . . . . .	St. J/Meridian . . .	1 additional day
3013-06	Stainless Steel potted load cells (LCF-HR-4050) and AccuQuest foot upgrade . . . . .	Meridian . . . . .	1 additional day
3015-11	Stainless steel load cell, welded cover and threaded ball-in-cup foot (4) . . . . .	St. J/Meridian . . . .	1 additional day
3016-12	Threaded ball-in-cup foot (4) . . . . .	Meridian . . . . .	1 additional day

## Forklift and Pallet Jack Scales

WF Series Forklift Scales . . . . .	Decatur, IL . . . . .	2 weeks
Pallet Weigh and Pallet Weigh Plus . . . . .	St. J . . . . .	4 to 5 days
 CP Series . . . . .	St.J . . . . .	9 weeks (5k) 9 weeks (10k)
FH Series . . . . .	St.J . . . . .	3 weeks
FHX Series . . . . .	St.J . . . . .	3 weeks

## Weighing Assemblies

9101 FB Series . . . . .	St.J . . . . .	In stock*
9102 FB Series . . . . .	St.J . . . . .	In stock*
9104 FB Series . . . . .	St.J . . . . .	In stock*
9106 FB Series . . . . .	St.J . . . . .	In stock*
9109 Series . . . . .	Hudson, MA . . . . .	1 week*
9120 Series . . . . .	Hudson, MA . . . . .	1 week*
Omnicell Accessories . . . . .	St. J . . . . .	1 week*

\* Typical lead time may vary at times of heavy volume.  
Call Customer Service for the most accurate lead time.

When Customer Support provides Omnicell lead time, it is based on availability at the time of the request and subject to availability at the time of order. Standard lead times are 8-12 weeks.

# Product Lead Times

Section	Product	FOB	Lead Time
<b>Instrumentation</b>			
	X Series Process Control Transmitter	St. J	2 weeks
	FB1100 Series	St. J	1 day
	NexWeigh Instrument	St. J	1 day
	NexWeigh Instrument with Ethernet TCP/IP	St. J	3 days
	FB2250 Series Instruments (ABS or SS)	St. J	1 day
	FB2255 Series Instruments	St. J	1 day
	X-Series Instrument	St. J	1 day
	X-Series Instrument Accessories	St. J	2 weeks
	FB6000 Series Analog Instruments FB6001, FB6002, FB6003, FB6005, FB6006, FB6007	St. J	2 days
	FB 2560 Instrument — Desk/Wall Mount	St. J	2 days
	FB 2560 Instrument — Rack Mount	St. J	3 days
	FB2560 Instrument — NEMA 4X	St. J	3 days
	FB2560 Instrument — Panel Mount	St. J	3 days
	FB4000 Desktop Instrument	St. J	2 days
	FB4000 NEMA 4X Instrument	St. J	2 days
	Fairbanks Intercom System	St. J	2 to 3 weeks
	Instrumentation Accessories	St. J	1 day
<b>Remote Displays</b>			
	1601 Remote Display	St. J	1 day
	1605 Remote Display	St. J	1 day
	1605 RF Remote Display	St. J	3 days
	1605T Remote Display	St. J	1 day
	1605T RF Remote Display	St. J	3 days
<b>Intrinsically Safe</b>			
	2800 Series	St. J	1 day
	2816 Series	St. J	1 day
	3052 Series	St. J	1 day

# Product Lead Times

Section	Product	FOB	Lead Time
<b>Printers</b>			
	LabelBank — DataBank . . . . .	St. J . . . . .	10 days
	Interface cables & connectors . . . . .	St. J . . . . .	1 day
	220 Series Tape Printer . . . . .	St. J . . . . .	1 day
	420 Series . . . . .	St. J . . . . .	3 days
	295 Series . . . . .	St. J . . . . .	1 day
	590 Series . . . . .	St. J . . . . .	1 day
	GC420d Series Label Printer (formerly 2844) . . . . .	St. J . . . . .	3 days
	PM43 Series . . . . .	St. J . . . . .	3 days
	PC43d Desktop Printer . . . . .	St. J . . . . .	3 days
	9403 Series . . . . .	St. J . . . . .	3 days
<b>Software</b>			
	DataBank & LabelBank Software . . . . .	St. J . . . . .	2 weeks
	Interact PC Software . . . . .	St. J . . . . .	1 week
	Interact Support Plans . . . . .	St. J . . . . .	1 week
<b>IM 6000 In-Motion Products</b>			
	IM 6000 . . . . .	St. J . . . . .	Inquire
<b>Special Products</b>			
	Monorail Scales . . . . .	St. J . . . . .	4 weeks

---

# Terms & Conditions

---



## TERMS AND CONDITIONS

The following provisions form part of the quotation as express Agreements between Fairbanks Scales ("Company") and the Buyer governing the terms and conditions of the sale, subject to modification only in writing signed by the local manager or an executive officer of the Company. In the event of any differences between these terms and conditions and those of Buyer, Buyer acknowledges that notwithstanding anything to the contrary, these terms and conditions shall prevail and Buyer's signing of this quotation or accepting the goods and services to be delivered hereunder shall be conclusive proof thereof.

1. If the order is under and according to a Company dealer or distributor contract with Buyer in force at the time of acceptance, the provisions of such contract will control, except as expressly otherwise provided on the face hereof.
2. Fairbanks Scales Inc. (the "Company") warrants and agrees that if, within one (1) year after installation or 15 months from date of shipment, whichever occurs first, any part purchased from the Company should fail because of defective material or workmanship in its manufacture, and the Company is notified promptly, in writing, of the nature of the defect, the Company will, (if Buyer's account with the Company is then and remains current), during normal working hours, repair or replace such part, free of charge, provided the Buyer pays travel expenses to and from the nearest Fairbanks Scales Customer Support Center, or Fairbanks Authorized Distribution Center, or in case of a replacement, shipping expenses from its factory. (Travel charges and shipping expenses so incurred during the first 30 days following installation will be paid by the Company.) It is the Company's sole discretion whether to replace or repair the part covered under this warranty. The Company reserves the right to replace any defective part with a repaired part from its warranty stock. Notwithstanding anything contained herein to the contrary, this warranty is voidable at the discretion of the Company if the product has been installed by anyone other than the Company or an authorized distributor of the Company or has been subjected to improper installation, misuse, negligent handling, alteration, accident, or improper repairs or modifications. Any warranties with respect to machinery, apparatus, accessories, articles, or materials not manufactured by the Company shall be limited to those of the respective manufacturer thereof, if any, which the Company may be permitted to pass on to the Buyer. Under this provision, the Company will be deemed to have manufactured only those articles bearing the Company's name-plate or trademark.
3. Unless and until all sums (however evidenced) payable in respect of the sale and delivery of the goods have been fully paid in money and satisfied:
  - (a) the goods shall remain strictly personal property, however affixed to realty, title thereof and ownership thereof shall remain in Company's name; and Buyer shall keep the property insured and free from liens or encumbrances, pay all taxes thereon, make good all loss, damage, or deterioration, and take all steps necessary to preserve the Company's title, including the execution and filing of all instruments necessary for such purpose.
  - (b) Company shall have, and in the event of default in the terms hereof, may exercise cumulatively and not in the alternative, all rights and remedies provided by the applicable laws of the jurisdiction, as if expressly herein so provided, and, insofar as permitted by such laws, may declare all sums payable hereunder immediately due and payable, may take possession of the property or any part thereof wherever found, and may sell the same at public or private sale on such terms as it may deem advisable, giving Buyer 10 days written notice of the time and place of the sale, at which Company may bid and become a Buyer, the proceeds of such sale shall be applied, in the order stated, to the costs and the expenses of search, seizure, removal, storage, advertisement, sale, collection and enforcement, to interest on the amount due and unpaid purchase price, and to any other sums owing to the Company by Buyer; any excess shall be remitted to Buyer and the Buyer shall forthwith pay any deficiency.
4. Except as otherwise expressly stated on the face of this acknowledgment: The goods shall be delivered F.O.B. cars, Company's factory; the prices charged shall be the Company's prices regularly established at time of shipment, all stated discounts shall apply to list prices; Buyer shall, in addition, pay all shipping and handling charges from factory, or their equivalent, and also taxes on the sale, delivery or use. Nevertheless, in all cases: Company reserves the right to elect terms of payment C.O.D., SDB/L, or Net 30 days after shipment and accounts past due shall bear interest at the highest lawful contract rate, and Buyer shall pay all costs and expenses, including attorney's fees, incurred in collecting the same.
5. The order is subject to cancellation by Buyer (a) only for standard products not the subject of the second sentence hereof, (b) only prior to shipment or commencement of any site work by or for the Company in connection therewith, and (c) then only on the payment to Company of 20% of the net price as agreed liquidated damages, which Buyer agrees to pay. Orders involving custom product or product to be manufactured or modified for a particular customer or its particular application are not subject to cancellation; any such attempted cancellation shall constitute a breach of contract, entitling the Company to all remedies available to it by law.
6. Shipment date and delays: At the time the order is placed, the Buyer will be notified of the shipping date of the scale. The Company will manufacture the scale in order to meet the shipping date. If the Buyer delays the shipment of the scale by more than five (5) days, within ten (10) working days, prior to the scheduled shipping date, a twenty percent (20%) charge will be assessed to the Buyer. Should the Buyer request delays on orders quoted which involve subcontractors, increases in cost from subcontractors will be borne by the Buyer.
7. THE COMPANY'S WARRANTIES AS SET FORTH HEREIN ARE EXCLUSIVE AND ARE IN LIEU OF, AND BUYER HEREBY WAIVES, ALL OTHER WARRANTIES, EXPRESS OR IMPLIED, INCLUDING, WITHOUT LIMITATION, ANY IMPLIED WARRANTIES OF MERCHANTABILITY AND/OR FITNESS FOR A PARTICULAR PURPOSE.
8. UNDER NO CIRCUMSTANCES SHALL THE COMPANY HAVE ANY LIABILITY FOR LIQUIDATED DAMAGES OR FOR INCIDENTAL, COLLATERAL, CONSEQUENTIAL OR SPECIAL DAMAGES OR FOR THE LOSS OF PROFITS, OR FOR ACTUAL LOSSES OR FOR LOSS OF PRODUCTION OR PROGRESS OF CONSTRUCTION, WHETHER RESULTING FROM DELAYS IN DELIVERY OR PERFORMANCE, BREACH OF WARRANTY, CLAIMS OF INCORRECT WEIGHING, CLAIMS OF OR FOR NEGLIGENT MANUFACTURE, ACTS OF GOD, OR OTHERWISE. THE AGGREGATE TOTAL LIABILITY OF THE COMPANY UNDER THIS CONTRACT, WHETHER FOR BREACH OF WARRANTY OR OTHERWISE, SHALL IN NO EVENT EXCEED THE CONTRACT PRICE. BUYER AGREES TO INDEMNIFY AND HOLD HARMLESS THE COMPANY FOR ALL CLAIMS BY THIRD PARTIES, WHETHER FOR BUSINESS LOSS, PERSONAL INJURY OR OTHERWISE, WHICH EXTEND BEYOND THE FOREGOING LIMITATIONS ON THE COMPANY'S LIABILITY.

# 2800 Control Drawing 1 of 12

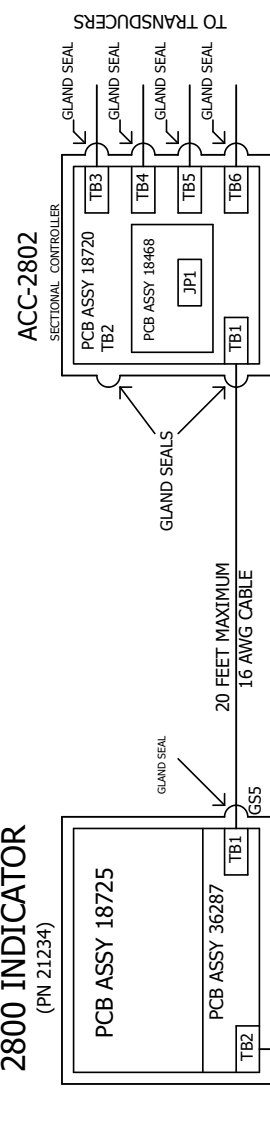
REV	DESCRIPTION	DATE	APP
1	Rev Sheets 4 and 8	01-17-01	
2	Rev Sheets 4 and 8	06-14-01	
3	Rev Sheets 4 and 8	07-04-01	
4	Add Sheets 9 & 10 per ECO 13469	07-02-03	MJQ
5	REV SHEETS 4 & 8 PER ECO 13552	06-26-04	MJQ
6	ADDED SHEETS 11 & 12 PER ECO 14036	6-9-09	GAL
7	REV SHEETS 9 & 10 PER ECO 14187	2-2-11	GAL
8	REV PER ECO 000048	2-01-19	BEM

NOTES:

1. Installation shall be in accordance with the National Electrical Code(ANSI/NFPA 70) and ANSI/ISA-RP12.6 "Installation of Intrinsically Safe Instrument Systems in Class I Hazardous (Classified) Locations."
2. Size of wires in cable between ACC-2825 and 2800 or between 2800 and ACC-2802 or between ACC-2802s shall not exceed wire size 16AWG.
3. Strain gage based transducers must be FM approved (for installations requiring FM approval) or CSA certified (for installations requiring CSA approval) for the hazardous locations where they are installed and have appropriate entity parameters.
4. ALL UNUSED GLAND SEALS ARE PLUGGED.
5. SEE SHEET 6 FOR 2800 GLAND SEAL LOCATIONS AND CABLE FUNCTIONS.

ENTITY OUTPUT PARAMETERS  
 FOR TB3, TB4, TB5 or TB6:  
 $Vt(Vo) = 7.02V$   
 $I_t(Io) = 190\text{ ma}$   
 $Po = 0.38\text{ W}$   
 $Ca(Co)\text{ GP A,B} 14\text{ uF}$   
 $La(Lo)\text{ GP A,B} 2.3\text{ mH}$   
 $Ca(Co)\text{ GP C,E} 42\text{ uF}$   
 $La(Lo)\text{ GP C,E} 9.2\text{ mH}$   
 $Ca(Co)\text{ GP D,F,G} 84\text{ uF}$   
 $La(Lo)\text{ GP D,F,G} 18.4\text{ mH}$

HAZARDOUS AREAS:  
 CL I II III Div 2 Gp A B C D E F G



**This Control Drawing for Instruments manufactured ON or AFTER 03/01/2019**

GROUPS A, B, C, D, E, F & G

2800 INDICATOR

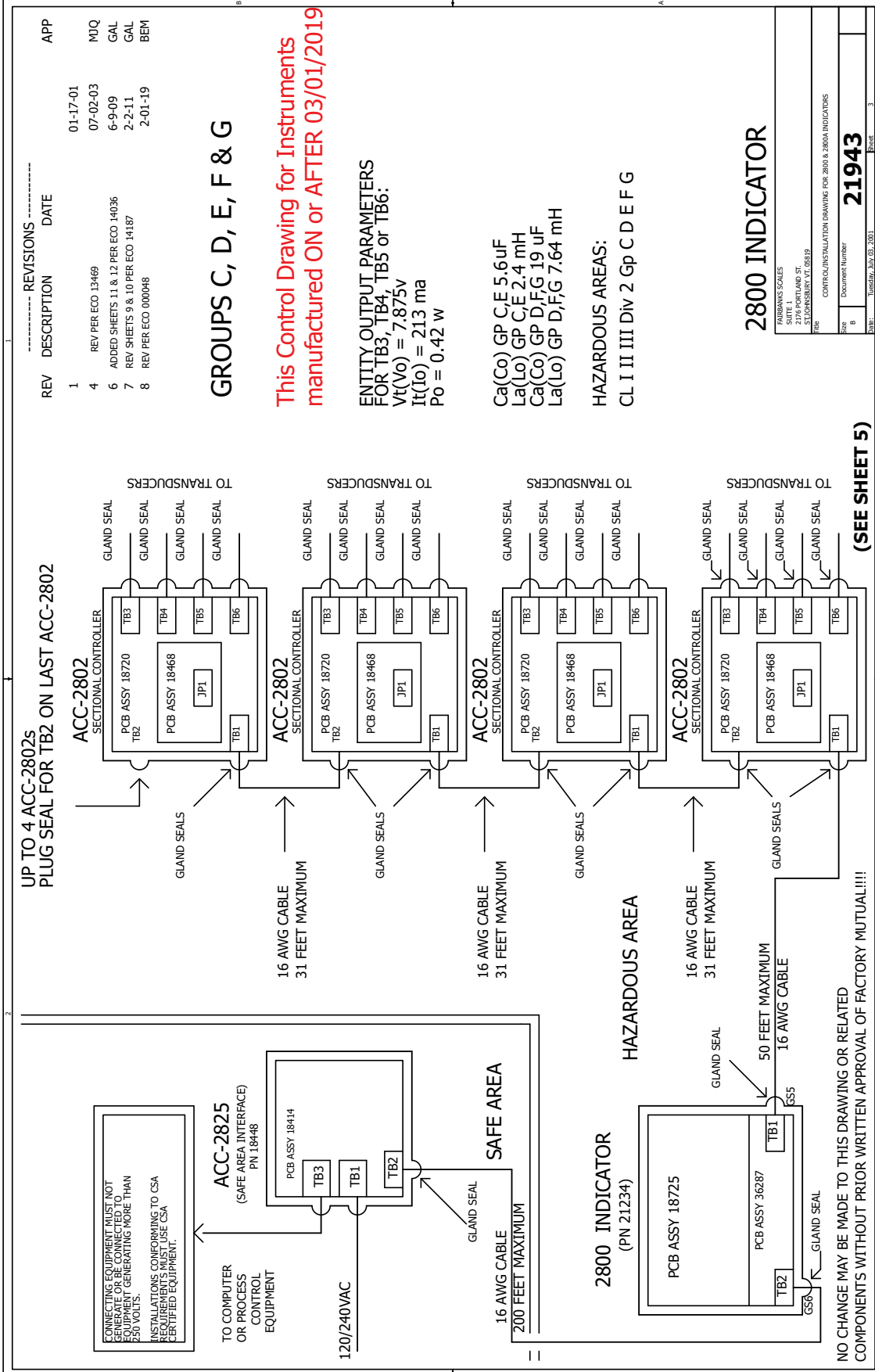
FAIRBANKS SCALES	
SHEET 1	
2176 PORTLAND ST.	
FAIRBANKS, ALASKA 99701	
CONTROL/INSTALLATION DRAWING FOR 2800 & 2802 INDICATORS	
Size	Document Number
B	<b>21943</b>
Date: 03/01/2019	Sheet
1	of 12

NO CHANGE MAY BE MADE TO THIS DRAWING OR RELATED COMPONENTS WITHOUT PRIOR WRITTEN APPROVAL OF FACTORY MUTUAL!





# 2800 Control Drawing 3 of 12



REV	DESCRIPTION	DATE	APP
1			
4	REV PER ECO 13469	01-17-01	MUQ
6	ADDED SHEETS 11 & 12 PER ECO 14036	07-02-03	GAL
7	REV SHEETS 9 & 10 PER ECO 14187	6-9-09	GAL
8	REV PER ECO 000048	2-2-11	GAL
		2-01-19	BEM

**GROUPS C, D, E, F & G**

**This Control Drawing for Instruments manufactured ON or AFTER 03/01/2019**

ENTITY OUTPUT PARAMETERS FOR TB3, TB4, TB5 or TB6:  
 $Vt(Vo) = 7.875V$   
 $It(Io) = 213\text{ ma}$   
 $Po = 0.42\text{ W}$

Ca(Co) GP C E 5.6uF  
 La(Lo) GP C E 2.4 mH  
 Ca(Co) GP D F G 19 uF  
 La(Lo) GP D F G 7.64 mH

**HAZARDOUS AREAS:**  
 CL I II III Div 2 Gp C D E F G

**2800 INDICATOR**

DRAWING SCALES	
SHEET 1	21943
2176 PORTLAND ST. SELDENBURG, VT. 05819	
CONTROL/INSTALLATION DRAWING FOR 2800 & 2800A INDICATORS	
Doc Number	21943
Date	Tuesday, July 03, 2001
Sheet	3

NO CHANGE MAY BE MADE TO THIS DRAWING OR RELATED COMPONENTS WITHOUT PRIOR WRITTEN APPROVAL OF FACTORY MUTUAL!!!!



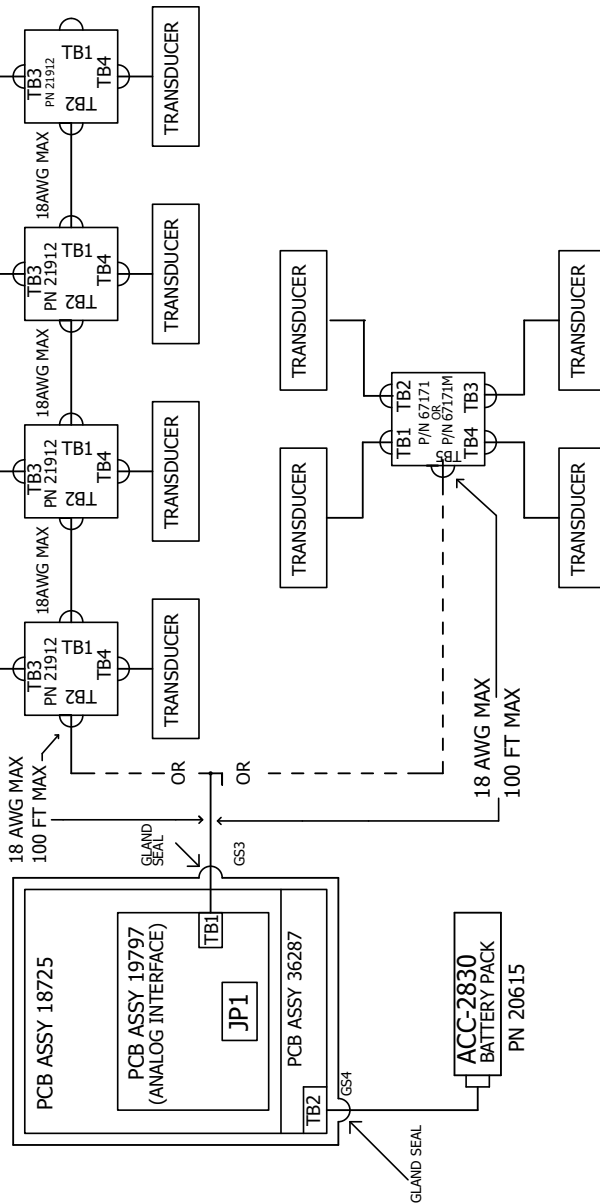
# 2800 Control Drawing 4 of 12

This Control Drawing for Instruments manufactured ON or AFTER 03/01/2019

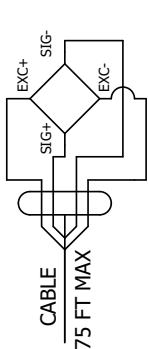
**NOTES:**

1. ALL UNUSED GLAND SEALS ARE PLUGGED.
2. MAXIMUM TRANSDUCER CABLE LENGTH/WIRE GAGE 75 FT/20AWG.
3. TWO TRANSDUCERS MAY PARALLELED REDUCING THE NUMBER OF PN 21912 BY HALF.

**2800A INDICATOR  
(PN 36449)**



REV	DESCRIPTION	DATE	APP
1			
2	22075 changed to 21912	01-17-01	
3	Added Sum Jct Box 67171	06-14-01	
4	REV PER ECO 13469	07-04-01	MJQ
5	REV PER ECO 13552	07-02-03	MJQ
6	ADDED SHEETS 11 & 12 PER ECO 14036	06-26-04	GAL
7	REV SHEETS 9 & 10 PER ECO 14187	6-9-09	GAL
8	REV PER ECO 000048	2-2-11	GAL
		2-01-19	BEM



**TYPICAL TRANSDUCER**

**ENTITY OUTPUT PARAMETERS FOR TB1 19797:**

- Vt(Vo) = 7.02v
- It(Io) = 250 ma
- Po = 0.88 w
- Ca(Co) GP A, B 14 uF
- La(Lo) GP A, B 2.3 mH
- Ca(Co) GP C, E 42 uF
- La(Lo) GP C, E 9.2 mH
- Ca(Co) GP D, F, G 84 uF
- La(Lo) GP D, F, G 18.4 mH

**HAZARDOUS AREAS:**

- CL I II III Div 1 Gp A B C D E F G
- CLI ZONE 0 AEX ia [Ia] IIC IIB

**GROUPS A, B, C, D, E, F & G  
GROUPS IIC & IIB**

FM APPROVED/CSA CERTIFIED  
STRAIN GAGE BASED TRANSDUCERS  
WITH SUITABLE PARAMETERS  
FOR CLASS, ZONE/DIVISION AND GROUP.

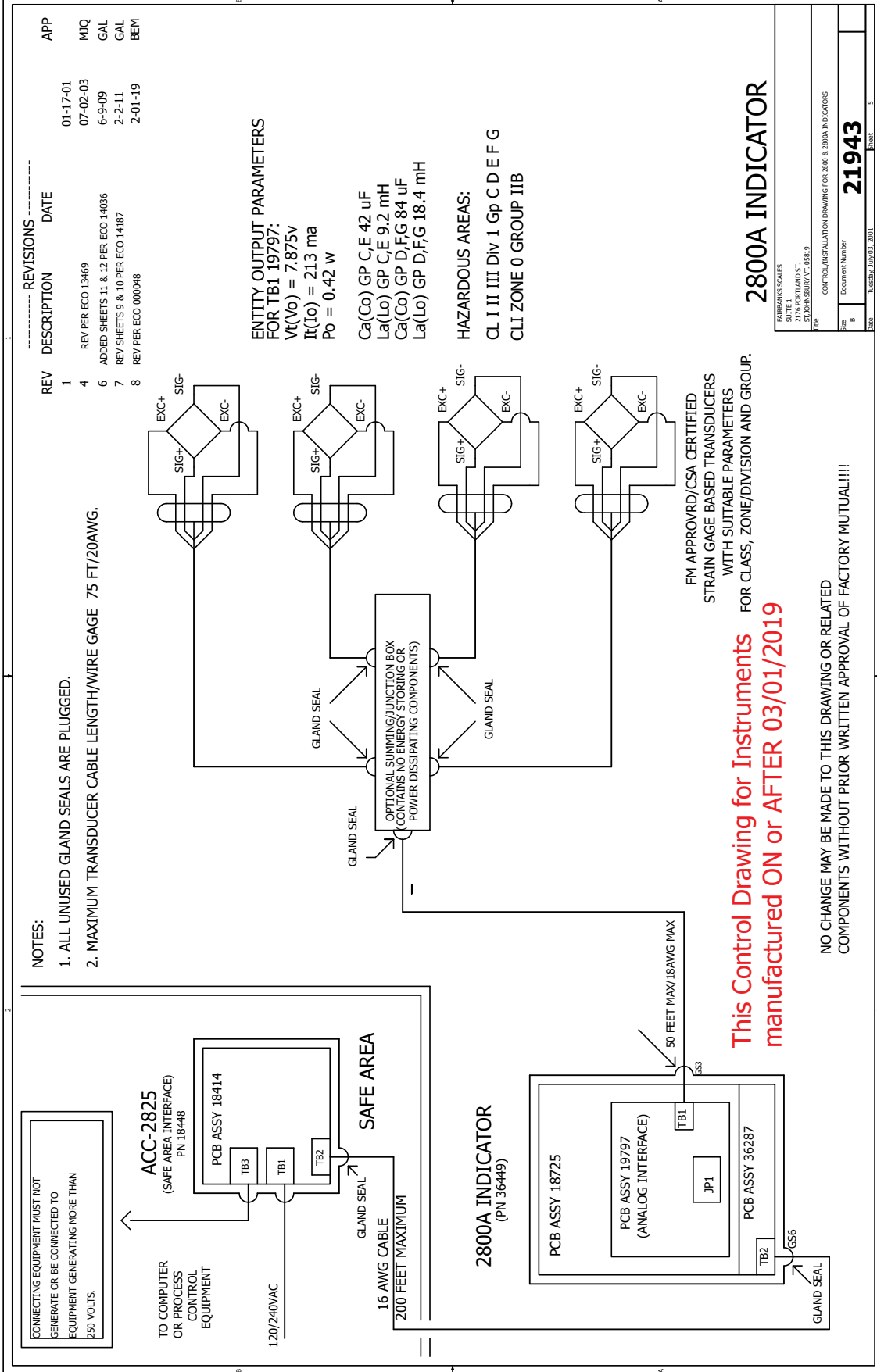
NO CHANGE MAY BE MADE TO THIS DRAWING OR RELATED COMPONENTS WITHOUT PRIOR WRITTEN APPROVAL OF FACTORY MUTUAL!

**2800A INDICATOR**

FAIRBANKS SCALES 2195 PORTLAND ST. STAMFORD, VT 05639	
CONTROL/INSTALLATION DRAWING FOR 2800 & 2800A INDICATORS	
Doc	Document Number
B	<b>21943</b>
Date	Issued: July 03, 2011
Sheet	4



# 2800 Control Drawing 5 of 12

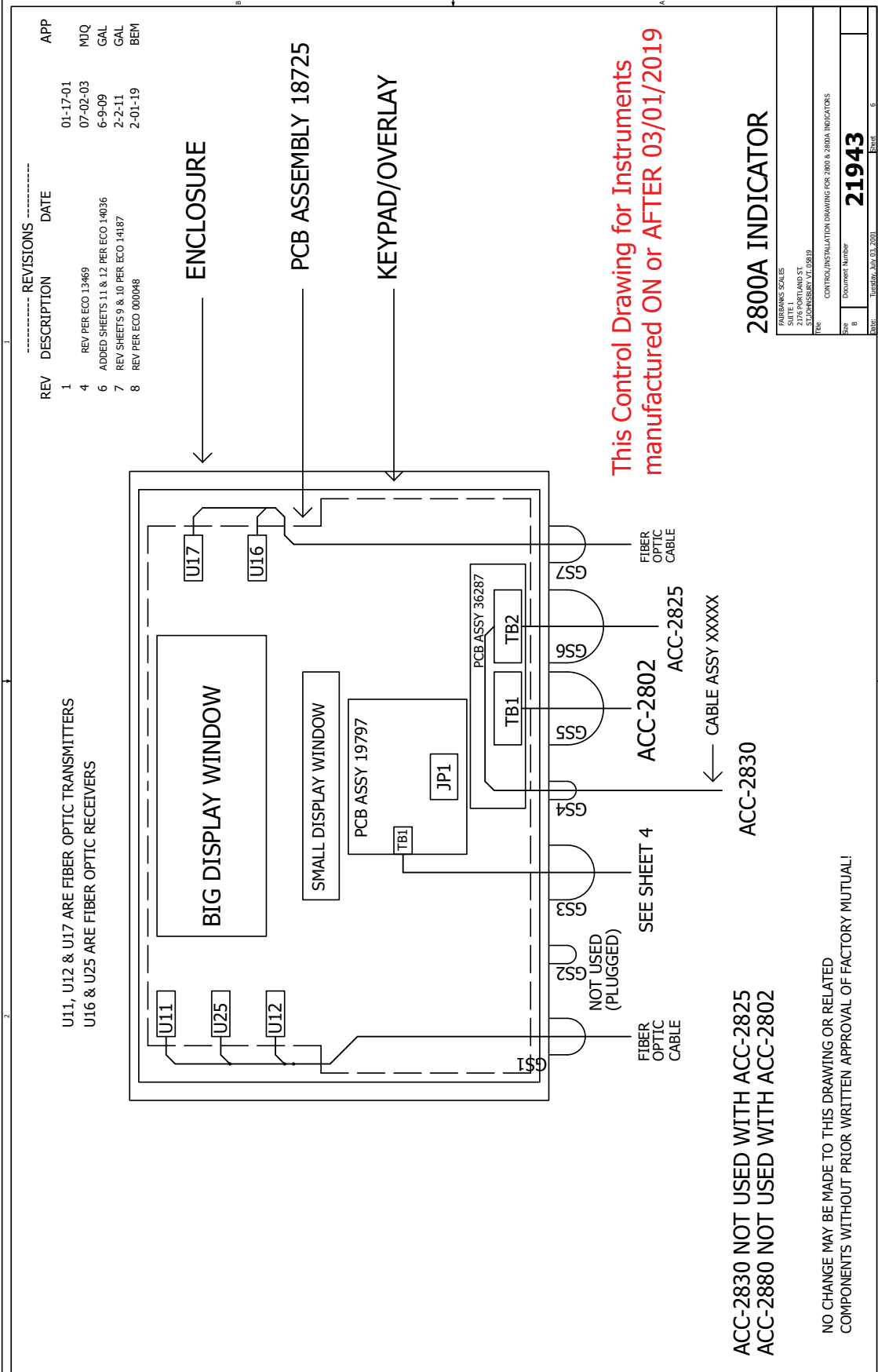


REV	DESCRIPTION	DATE	APP
1		01-17-01	MUQ
4	REV PER ECO 13469	07-02-03	GAL
6	ADDED SHEETS 11 & 12 PER ECO 14036	6-9-09	GAL
7	REV SHEETS 9 & 10 PER ECO 14187	2-2-11	GAL
8	REV PER ECO 000048	2-01-19	BEM

FAIRBANKS SCALES	
SITE 1	
2176 PORTLAND ST.	
SPRINGSBURY VT 05619	
TITLE CONTROL/INSTALLATOR DRAWING FOR 2800 & 3800A INDICATORS	
Docu	Document Number
<b>21943</b>	
DATE	Thursday, July 03, 2003
PAGE	5



# 2800 Control Drawing 6 of 12



REV	DESCRIPTION	DATE	APP
1			
4	REV PER ECO 13469	01-17-01	M0Q
6	ADDED SHEETS 11 & 12 PER ECO 14036	07-02-03	GAL
7	REV SHEETS 9 & 10 PER ECO 14187	6-9-09	GAL
8	REV PER ECO 000048	2-2-11	GAL
		2-01-19	BEM

This Control Drawing for Instruments manufactured ON or AFTER 03/01/2019

## 2800A INDICATOR

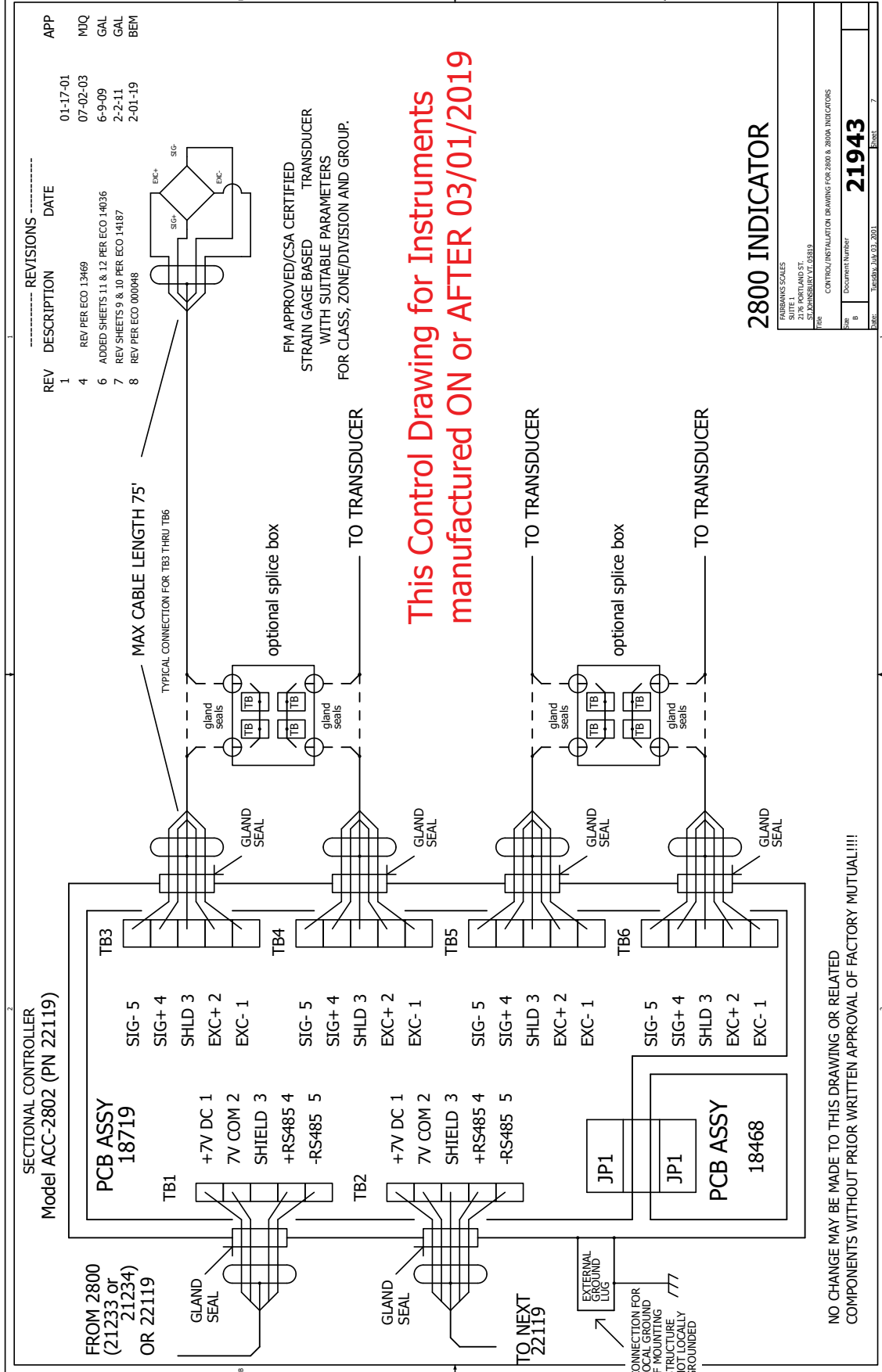
FAIRBANKS SCALES	
SUITE 200 WYLAND ST.	
STURBORN, VT 05819	
TITLE: CONTROL/INSTALLATION DRAWING FOR 2800 & 2800A INDICATORS	
Size	Document Number
B	<b>21943</b>
DATE: Tuesday, June 03, 2003	Page: 6

ACC-2830 NOT USED WITH ACC-2825  
ACC-2880 NOT USED WITH ACC-2802

NO CHANGE MAY BE MADE TO THIS DRAWING OR RELATED COMPONENTS WITHOUT PRIOR WRITTEN APPROVAL OF FACTORY MUTUAL!

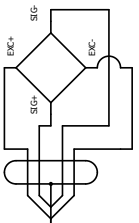


# 2800 Control Drawing 7 of 12



REV	DESCRIPTION	DATE
1		
4	REV PER ECO 13469	01-17-01
6	ADDED SHEETS 11 & 12 PER ECO 14036	07-02-03
7	REV SHEETS 9 & 10 PER ECO 14187	6-9-09
8	REV PER ECO 000948	2-2-11

APP	DATE
MJQ	01-17-01
GAL	07-02-03
GAL	6-9-09
BEM	2-2-11
	2-01-19



FM APPROVED/CSA CERTIFIED  
STRAIN GAGE BASED  
TRANSDUCER  
WITH SUITABLE PARAMETERS  
FOR CLASS, ZONE/DIVISION AND GROUP.

**This Control Drawing for Instruments  
manufactured ON or AFTER 03/01/2019**

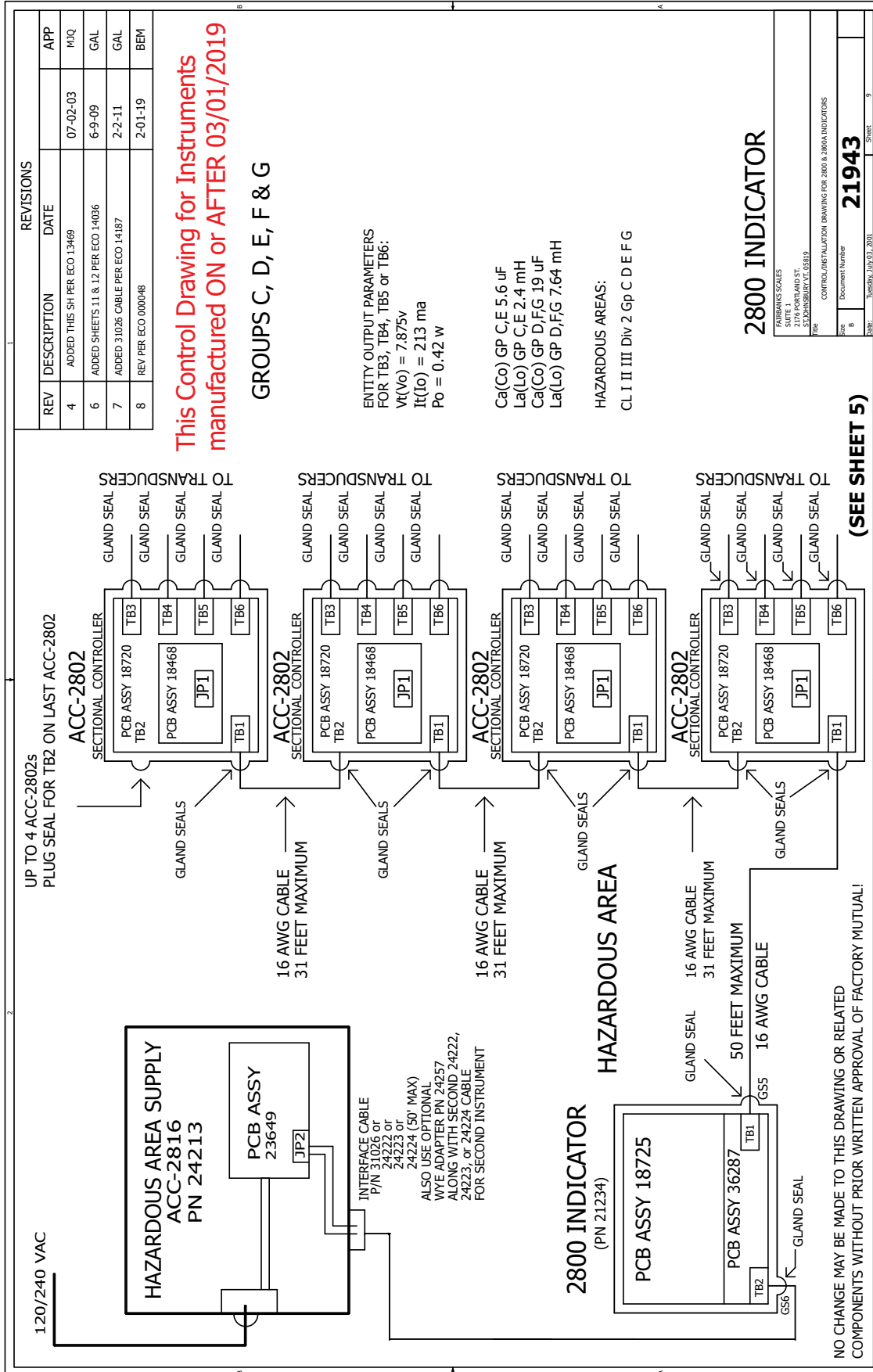
## 2800 INDICATOR

FAIRBANKS SCALES	
SUITE 1	
2176 PORTLAND ST	
FAIRBANKS, ALASKA 99701	
Title	
Scale	Document Number
B	<b>21943</b>
Spec	2800-01-03-2011
Sheet	7





# 2800 Control Drawing 9 of 12





# 2800 Control Drawing 11 of 12

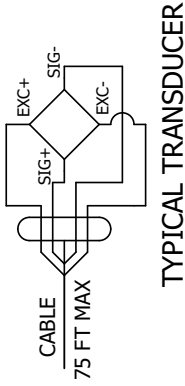
REV	DESCRIPTION	DATE
6	ADDED THIS SHEET PER ECO 14036	6-9-09
7	REV SHEETS 9 & 10 PER ECO 14187	2-2-11
8	REV PER ECO 000048	2-01-19

REVISIONS	DATE
6	6-9-09
7	2-2-11
8	2-01-19

APP	GAL	BEM

NOTES:  
 1. ALL UNUSED GLAND SEALS ARE PLUGGED.  
 2. MAXIMUM TRANSDUCER CABLE LENGTH/WIRE GAGE 75 FT/20AWG.

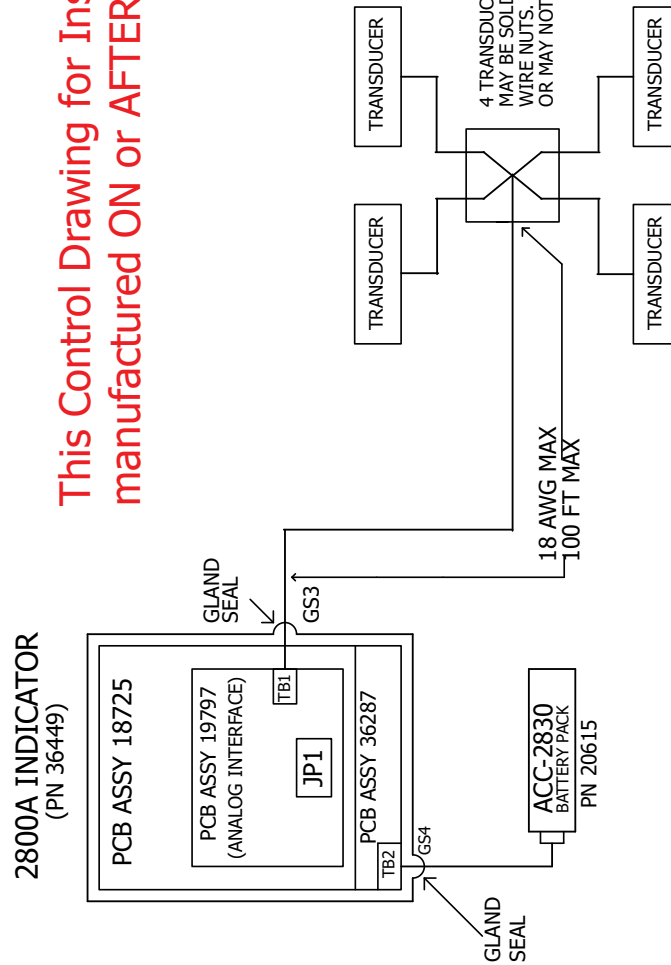
**This Control Drawing for Instruments manufactured ON or AFTER 03/01/2019**



**ENTITY OUTPUT PARAMETERS**

- FOR TBI 19797:
- Vt(Vo) = 7.02v
- It(Io) = 250 ma
- Po = 0.88 w
- Ca(Co) GP A, B 14 uF
- La(Lo) GP A, B 2.3 mH
- Ca(Co) GP C, E 42 uF
- La(Lo) GP C, E 9.2 mH
- Ca(Co) GP D, F, G 84 uF
- La(Lo) GP D, F, G 18.4 mH

**HAZARDOUS AREAS:**  
 CL I II III Div 1 Gp A B C D E F G  
 CLI ZONE 0 AEx ia [ia] IIC IIB



**GROUPS A, B, C, D, E, F & G**  
**GROUPS IIC & IIB**

FM APPROVED/CSA CERTIFIED  
 STRAIN GAGE BASED TRANSDUCERS  
 WITH SUITABLE PARAMETERS  
 FOR CLASS, ZONE/DIVISION AND GROUP.

NO CHANGE MAY BE MADE TO THIS DRAWING OR RELATED  
 COMPONENTS WITHOUT PRIOR WRITTEN APPROVAL OF FACTORY MUTUAL!

**2800A INDICATOR**

FAIRBANKS SCALES	
SUITE 1000	1000 W. MAIN ST.
ST. JOHNSBURY, VT 05491	
Title: CONTROL/INSTALLATION DRAWING FOR 2800 & 2800A INDICATORS	
Size: B	Document Number: <b>21943</b>
Scale:	Issue: Tuesday, Jun 03, 2014 11:58 AM

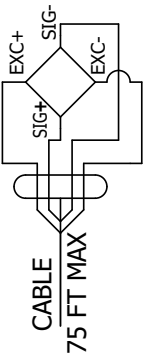
# 2800 Control Drawing 12 of 12

REVISIONS

REV	DESCRIPTION	DATE
6	ADDED THIS SHEET PER ECO 14036	6-9-09
7	REV SHEETS 9 & 10 PER ECO 14187	2-2-11
8	REV PER ECO 000048	2-01-19

APP GAL BEM

- NOTES:
- ALL UNUSED GLAND SEALS ARE PLUGGED.
  - MAXIMUM TRANSDUCER CABLE LENGTH/WIRE GAGE 75 FT/20AWG.



TYPICAL TRANSDUCER

ENTITY OUTPUT PARAMETERS FOR TB1 19797:

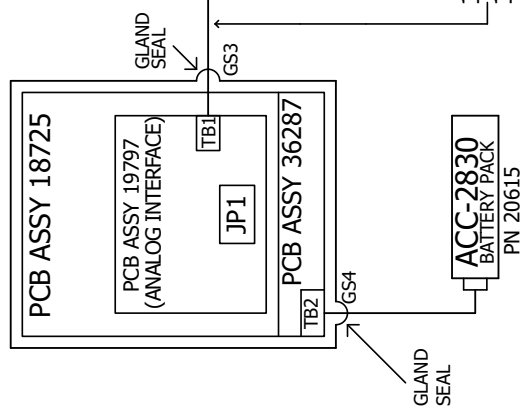
- Vt(Vo) = 7.02v
- It(Io) = 250 ma
- Po = 0.88 w
- Ca(Co) GP A, B4 uF
- La(Lo) GP A, B 2.3 mH
- Ca(Co) GP C, E 42 uF
- La(Lo) GP C, E 9.2 mH
- Ca(Co) GP D, F, G 84 uF
- La(Lo) GP D, F, G 18.4 mH

HAZARDOUS AREAS:

- CL I II III Div 1 Gp A B C D E F G
- CLI ZONE 0 AEx ia [ia] IIC IIB

This Control Drawing for Instruments manufactured ON or AFTER 03/01/2019

2800A INDICATOR (PN 36449)



SINGLE TRANSDUCER, TRANSDUCER CABLE MAY OR MAY NOT HAVE A CABLE SPLICE. CABLE CONNECTIONS MAY OR MAY NOT BE INSIDE AN ENCLOSURE.

GROUPS A, B, C, D, E, F & G GROUPS IIC & IIB

NO CHANGE MAY BE MADE TO THIS DRAWING OR RELATED COMPONENTS WITHOUT PRIOR WRITTEN APPROVAL OF FACTORY MUTUAL!

FM APPROVED/CSA CERTIFIED STRAIN GAGE BASED TRANSDUCERS WITH SUITABLE PARAMETERS FOR CLASS, ZONE/DIVISION AND GROUP.

2800A INDICATOR

FAIRBANKS SCALES	
SITE 1	
2176 PORTLAND ST	
FAIRBANKS, ALASKA 99701	
Title	
CONTROL/INSTALLATION DRAWING FOR 2800 & 2800A INDICATORS	
Size	Document Number
B	21943
Scale	Issue Date: 03/01/2019
Sheet	12



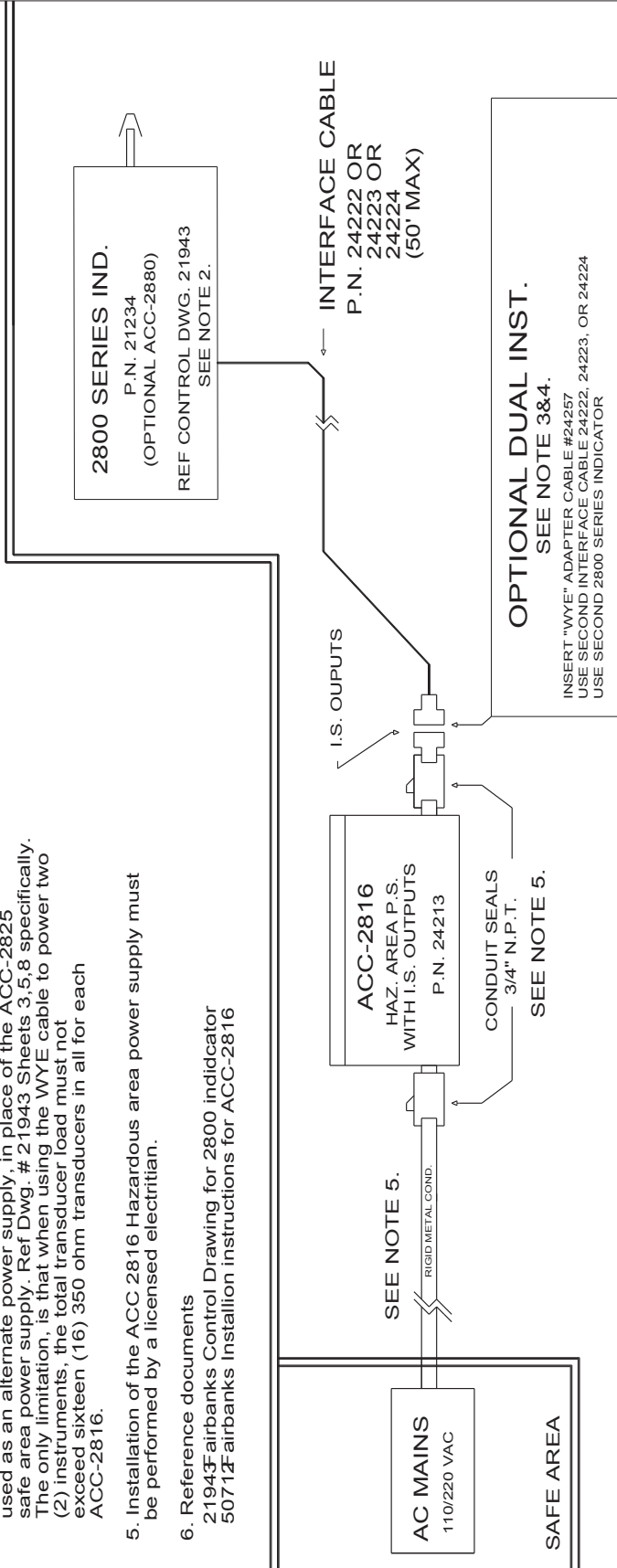
# 2816 Control Drawings

REVISIONS		
LTR	DESCRIPTION	DATE
1	RELEASED	3-7-03
2	REVISED HAZARDOUS AREAS: SPECS	5-13-03

NO CHANGE CAN BE MADE TO THIS DRAWING OR RELATED COMPONENTS WITHOUT PRIOR WRITTEN APPROVAL BY FACTORY MUTUAL.

**Notes:**

1. Installation shall be in accordance with the National Electric Code (ANSI/NFPA 70) and ANSI/ISA-RP 12.6 "Installation of Intrinsic Safety Instrument Systems in Class I Hazardous (Classified) Locations."
2. This drawing is to be used in conjunction with control drawing #21943. This drawing is an addendum to the 21943 drawing. It shows how the ACC-2816 Hazardous area power supply can be used as an alternate to the ACC-2825 safe area power supply, when connected with 2800 series indicators (ref 21943 dwg.)
3. Two (2) 2800 series instruments can be powered from one (1) ACC-2816 simultaneously with the use of "WYE" cable adapter #24257
4. The ACC 2816 Hazardous area power supply can be used as an alternate power supply in place of the ACC-2825 safe area power supply. Ref Dwg. # 21943 Sheets 3,5,8 specifically. The only limitation, is that when using the WYE cable to power two (2) instruments, the total transducer load must not exceed sixteen (16) 350 ohm transducers in all for each ACC-2816.
5. Installation of the ACC 2816 Hazardous area power supply must be performed by a licensed electrician.
6. Reference documents  
21943 Fairbanks Control Drawing for 2800 indicator  
50717 Fairbanks Installation instructions for ACC-2816



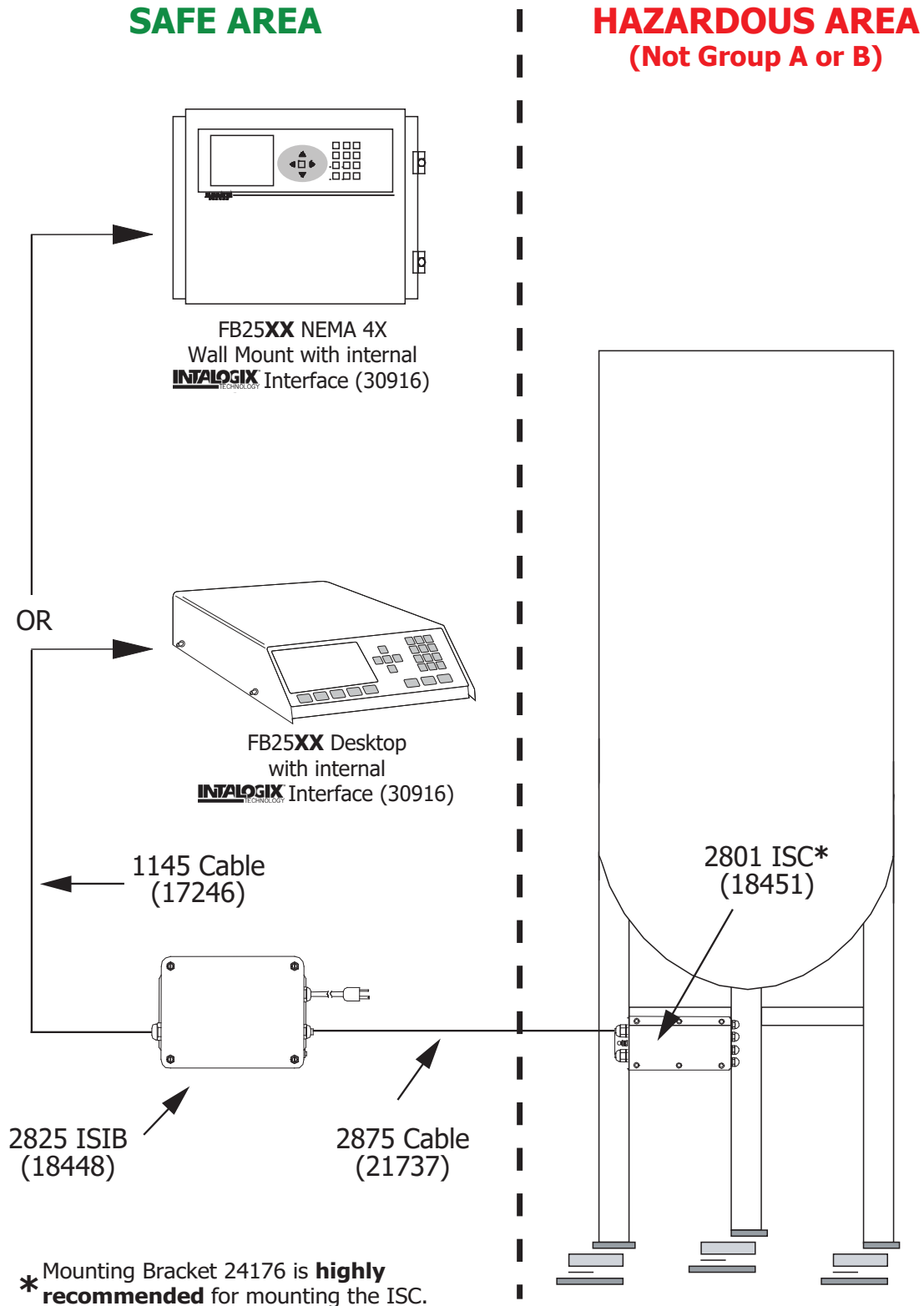
**HAZARDOUS AREAS:**

- EXPLOSION PROOF W/I.S. OUTPUTS, CL. I, DIV. I, GP. CD, T6
- DUST-IGNITION PROOF W/I.S. OUTPUTS, CL. II/III, DIV. I, GP. EFG, T6
- EXPLOSION PROOF W/I.S. OUTPUTS, CL. I, ZONE 1, GP. IIB, T6

UNLESS OTHERWISE SPECIFIED DIMENSIONS ARE IN INCHES METRIC DIMENSIONS ARE IN MILLIMETERS ANGLES ± 3 PLACE DECIMALS, + 2 PLACE DECIMALS, - MATERIAL	DR. GAD/RGB	DATE	Fairbanks Scales St. Johnsbury, Vermont
	CH. RGB	2-1-03	
	APP. MJQ	2-3-03	
THE MATERIAL AND INFORMATION CONTAINED HEREIN IS CONFIDENTIAL AND IS THE PROPERTY OF FAIRBANKS SCALES, AND IS NOT TO BE USED, DISCLOSED, COPIED, TRANSMITTED OR REPRODUCED WITHOUT THE EXPRESS WRITTEN PERMISSION OF FAIRBANKS.			FM CONTROLLED INTRINSICALLY SAFE ACC-2816 INSTALLATION DRAWING
FINISH	ACC-2816	SIZE	DRAWING NO. AND PART NO.
NEXT ASSY.	USED ON	C	24221
APPLICATION			SCALE NONE 1 OF 1 SHEET

# Application Reference Drawings

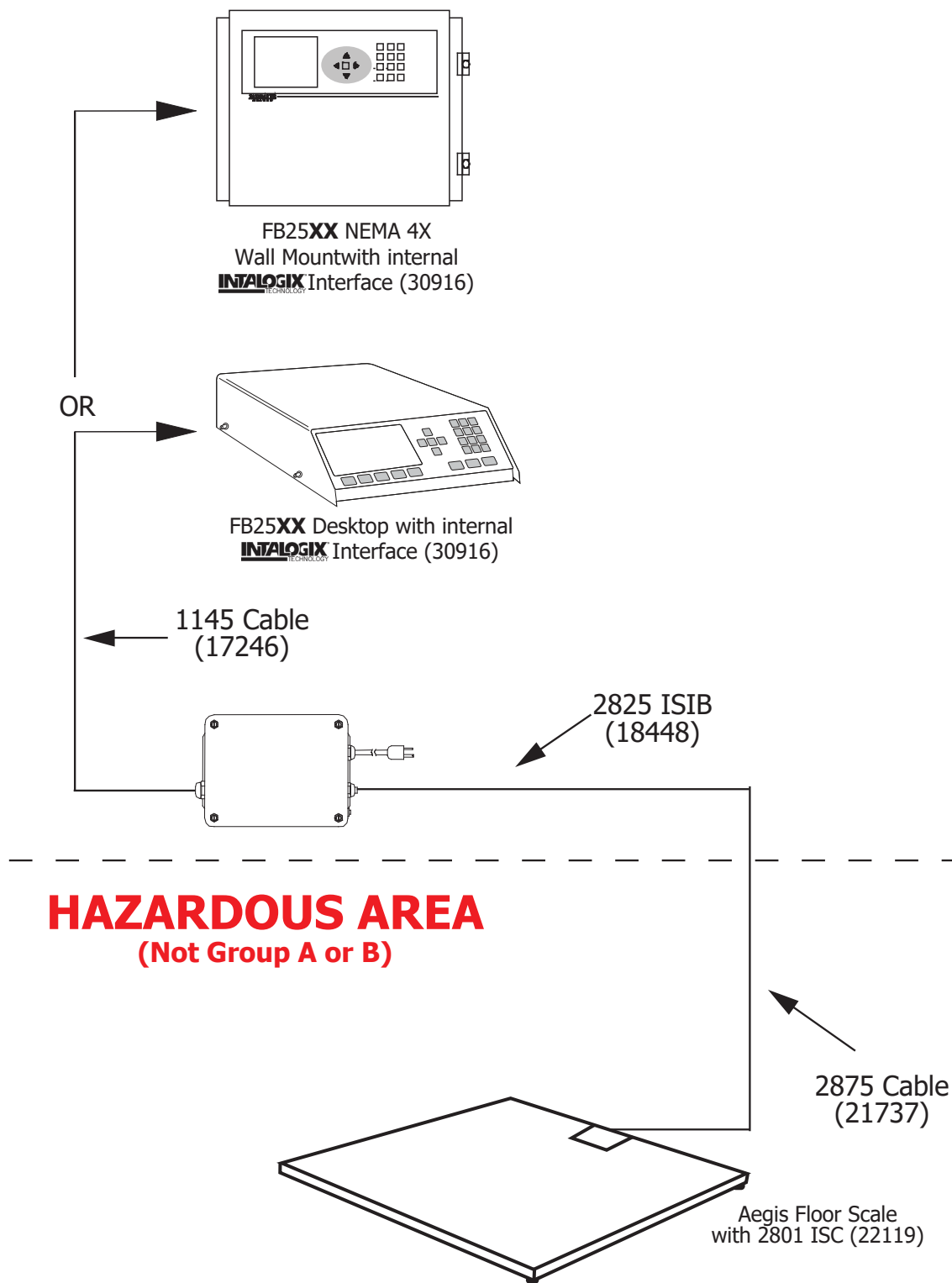
## Typical Tank Scale Application using FB25XX with ISIB & 2801 ISC



# Application Reference Drawings

## Typical Floor Scale Application using FB25XX with ISIB & 2801 ISC

**SAFE AREA**

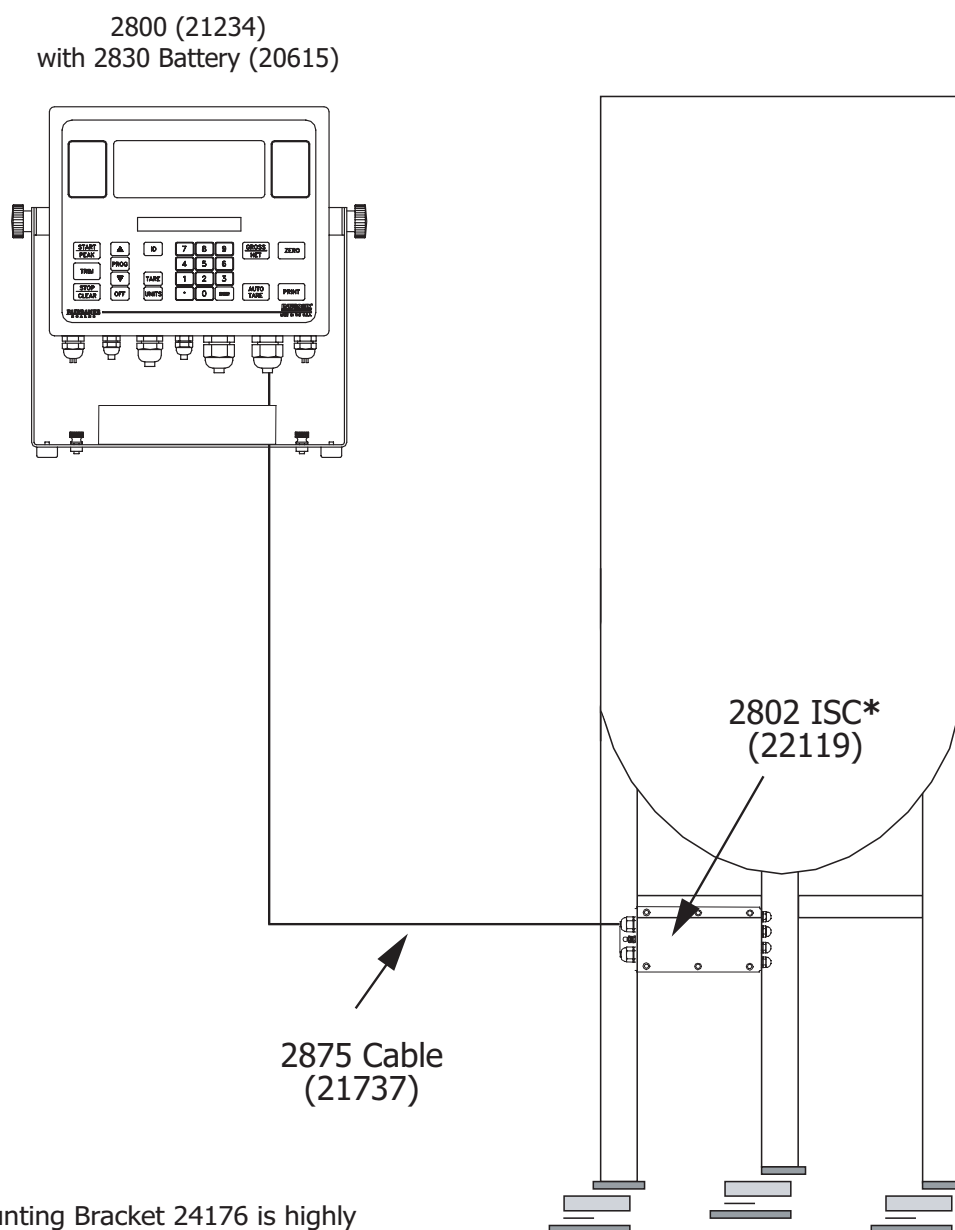


# Application Reference Drawings

## Typical Tank Scale Application using 2800 with 2802 ISC

SAFE AREA

HAZARDOUS AREA



\* Mounting Bracket 24176 is highly recommended for mounting the ISC.

---

# Application Reference Drawings

---

## Typical 2800 / Aegis Floor Scale Application with Intalogix Technology

**SAFE AREA**

**HAZARDOUS AREA**

