

HUMANS are COSMO-GEO-BIO-ELEKTRO-MAGNETIC beings

Within (very) limited deviations from the terrestrial and cosmic 'radiation fields' respectively, humans (and other living beings) can live a healthy life from conception to death. However, exposure to highly deviant fields will cause disease, respectively death can be the possible consequence.

One could list hundreds of literature references substantiating the above. To-the-point, reference is made here to a list, compiled by Professor Dr Martin Pall, of a dozen serious health effects due to EMF radiation, as identified in scientific research done even before 5G was introduced. Or read Arthur Firstenberg, *The INVISIBLE RAINBOW* with 160 pages of just substantiation of studies and tests.

For further substantiation of the above, perhaps an investigative look into public health statistics over the past 70 years could be taken. Special attention should then be paid to the simultaneity of the outbreak of 'pandemics' with the introduction of new communication technologies. Such a study could shed more light on the crucial negative impact of EMF radiation on our health. And this particularly in relation to 'rolling out 1G to 5G'.

An overview of the historical development of 0G to 5G can be found on Wikipedia. Health check related to EMF radiation.

Period 1980 - 1990

1G is being rolled out from about 1979-1980.

This is not done in all countries at the same time and usually takes several years to complete in a country (incidentally, this also applies to 2G to 5G).

The statistics on causes of death show a jump in this period for the following categories in particular * Endocrine, nutritional, metabolic (metabolic) diseases * Mental and behavioural disorders * Diseases of the nervous system and senses Period 1990 - 2000

2G is being rolled out from around 1990.

The aforementioned trend in cause of death continues mainly in pronounced form in the category (referring again to previous comment regarding the occurrence of 'illogical' table values):

* Psychological and behavioural disorders

Period 2000 - 2010

3G is being rolled out from around 2002.

Aforementioned cause of death trends continue to a pronounced extent in the categories: * Psychological and behavioural disorders.

* Diseases of the nervous system and senses.

* Furthermore, the first SARS-Covid outbreak occurs in 2002-2003

During this period, the REFLEX study is completed with the central conclusion: "EU Reflex study shows DNA damage caused by radiation from wireless devices and mobile phones."

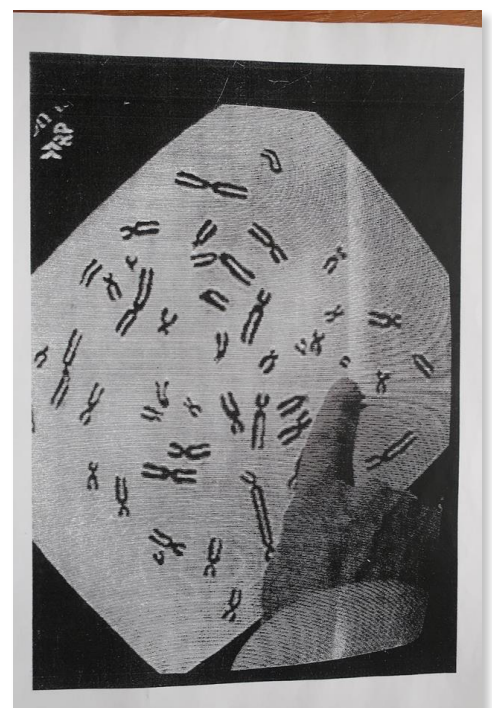
The picture on the right (EMF radiation damages DNA) is taken from a German TV report on the Reflex study. You can see here how the leader of that study, Prof Franz Adlkofer, points out a piece of DNA that has broken down as a result of EMF radiation.

Period 2010 - 2020

4G will be rolled out from around 2013.

The aforementioned trends continue to a pronounced extent in the categories:

* Mental and behavioural disorders.



- * Diseases of the nervous system and senses.
- * Furthermore, the second SARS-Covid (MERS) outbreak is taking place during 2013-2015.
- * And recently the third SARS-Covid (Covid 19) outbreak in 2019-2020-2021.

Summary

These periods associated with successively the roll-out of 1G, 2G, 3G and 4G and, over the course of the past year, even 5G have seen an extremely increased number of deaths in the categories of diseases that are now scientifically proven to be very well caused by the prevailing EMF radiation (Martin Pall list).

This is most obvious with the onset of 1G. A more precise statistical consideration of various diseases per year is needed to make the negative aspects of EMF radiation even more clearly visible, with then also very well possible transitions in this.

For example: initially, in just a few years, the most sensitive and weakest people die in bunches. Then the mortality rate drops slightly before rising steadily, although somewhat elevated and thus rather unobtrusively.

The results of the REFLEX study speak volumes about the dangers of wireless telecommunications!!! Our DNA is being damaged by it ... and that was only 2G and 3G respectively !!! It's up to you to further research and connect the dots for maintaining your own vitality.

Is it Covid-19 or EMF Sensitivity?

Symptoms of Covid-19	Symptoms of Radiation
• Brain fog	• Brain fog
• Dizziness	• Dizziness
• Fever or chills	• Fever or chills
• Cough	• Cough
• Shortness of breath	• Shortness of breath
• Difficulty breathing	• Difficulty breathing
• Fatigue	• Fatigue
• Muscle or body aches	• Muscle or body aches
• Headache	• Headache
• Dry, Sore throat	• Dry, Sore throat
• Nasal Congestion	• Nasal Congestion
• Nausea or vomiting	• Nausea or vomiting
• Diarrhea	• Diarrhea

Symptoms are similar. It's hard to know.

A private initiative of men and women for other men and women who care about Vitality for themselves, others and the future. Engaging with us means that you agree, as a man or a woman and on your own title, to the notice on www.myhappyfamily.com