

Simple Guide to LXQt: Based on PCLinuxOS Community Ed. 2022.04

Last Updated: 24 July 2022

The LXQt version on this .iso is 1.1.0.

Table of Contents

Simple Guide to LXQt: Based on PCLinuxOS Community Ed. 2022.04.....	1
Kernel Version.....	1
PCManFM-Qt (File Manager) Split View.....	1
Add a Trash Can to Your Desktop.....	2
Change the Desktop Wallpaper.....	4
Change the Theme.....	5
Add Quick Launchers to the Top Panel / Taskbar.....	7
How to Exit FocusWriter.....	10
Play an Internet Radio Stream with QMPlay2.....	10

Kernel Version

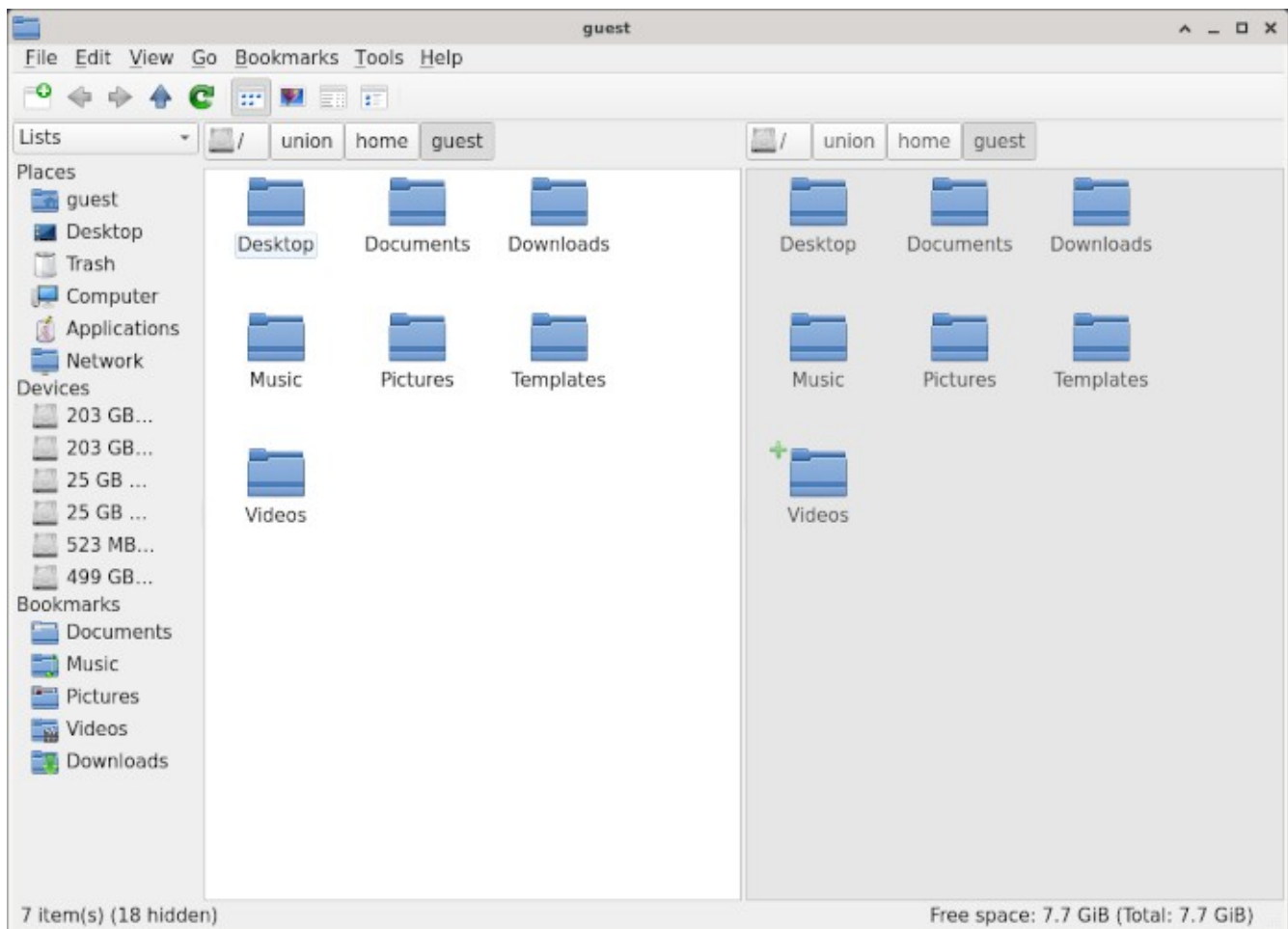
- 5.16.20
- You might wish to consider also installing an LTS (Long Term Support) kernel.
 - LTS kernels currently available in the PCLOS repositories:
 - 5.15.56 -- the 5.15.x series has an EOL (End of Life) of Oct. 2023
 - 5.10.114 -- the 5.10.x series has an EOL of Dec. 2026
 - 5.4.195 -- the 5.4.x series has an EOL of Dec. 2025
- Ika wrote an excellent tutorial on how to upgrade your kernel; it is clear and easy to follow:

<https://www.pclinuxos.com/forum/index.php/topic,137760.0.html>

"Kernel Upgrade -- How and Why." 4 June 2016.

PCManFM-Qt (File Manager) Split View

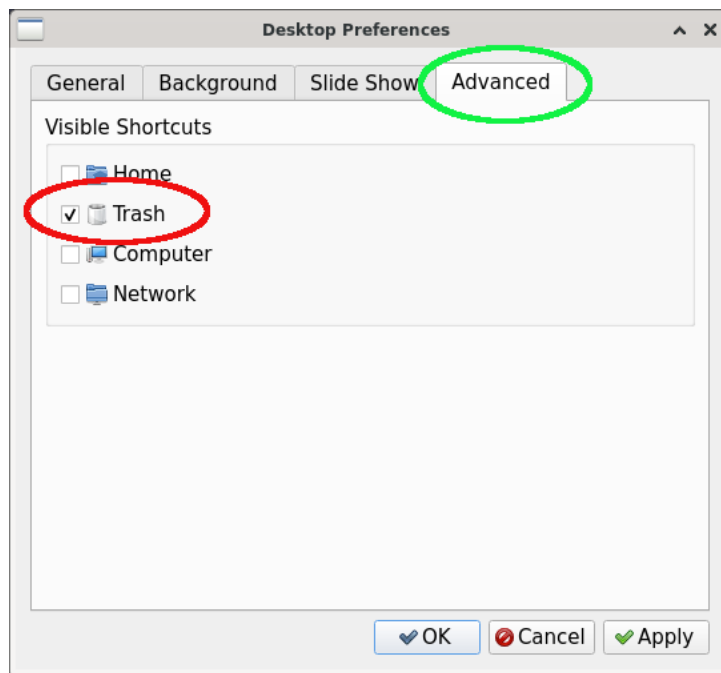
- For some reason, Daniel decided to configure the default behavior of the file manager, such that it opens in "Split View" mode (with two panes displaying):



- If you do not like this and want to have a single-pane display, from the View menu > deselect / uncheck the "Split View" option.
- Or, just press the F6 function key.

Add a Trash Can to Your Desktop

- From the main menu, go to Preferences > LXQt Settings > Desktop
- From the Desktop Preferences dialog window, click on the "Advanced" tab to bring it forward
- Select (tick) the box next to "Trash":

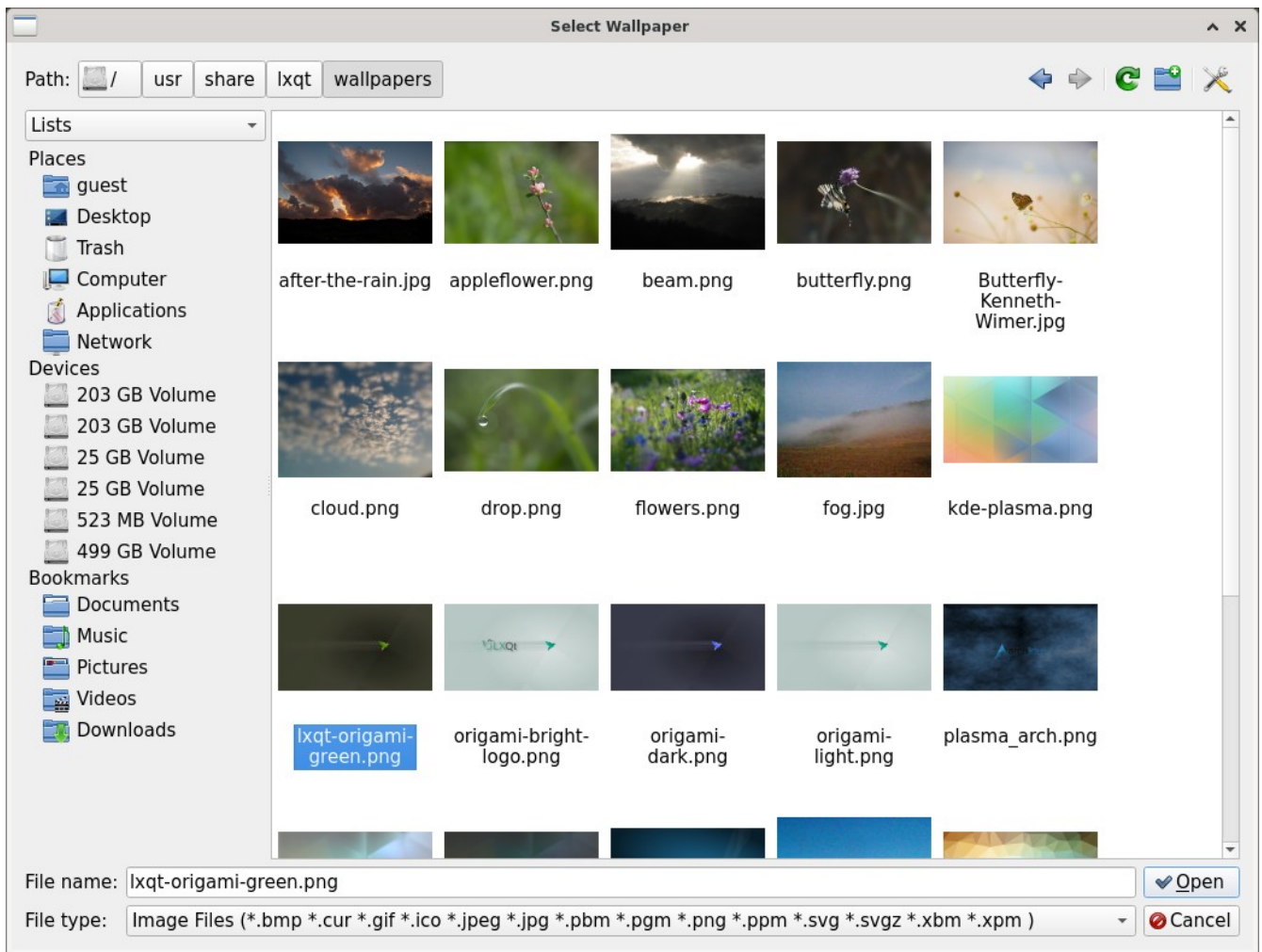


- Click the "Apply" button
- Close the "Desktop Preferences" dialog window
- A trash can icon should appear on your desktop:



Change the Desktop Wallpaper

- Right-click on an empty area of your desktop
- A dialog will appear. Select the "Desktop Preferences" option
- Click on the "Background" tab to bring it forward
- Look for the "Wallpaper image file" box
- Click on the "Browse" button next to that rectangle
- Using the file manager, navigate to the directory:
 - /usr/share/lxqt/wallpapers
- You will see some attractive (IMHO) wallpapers to choose from:



- There are a few wallpapers featuring Helix, the hummingbird mascot of LXQt:

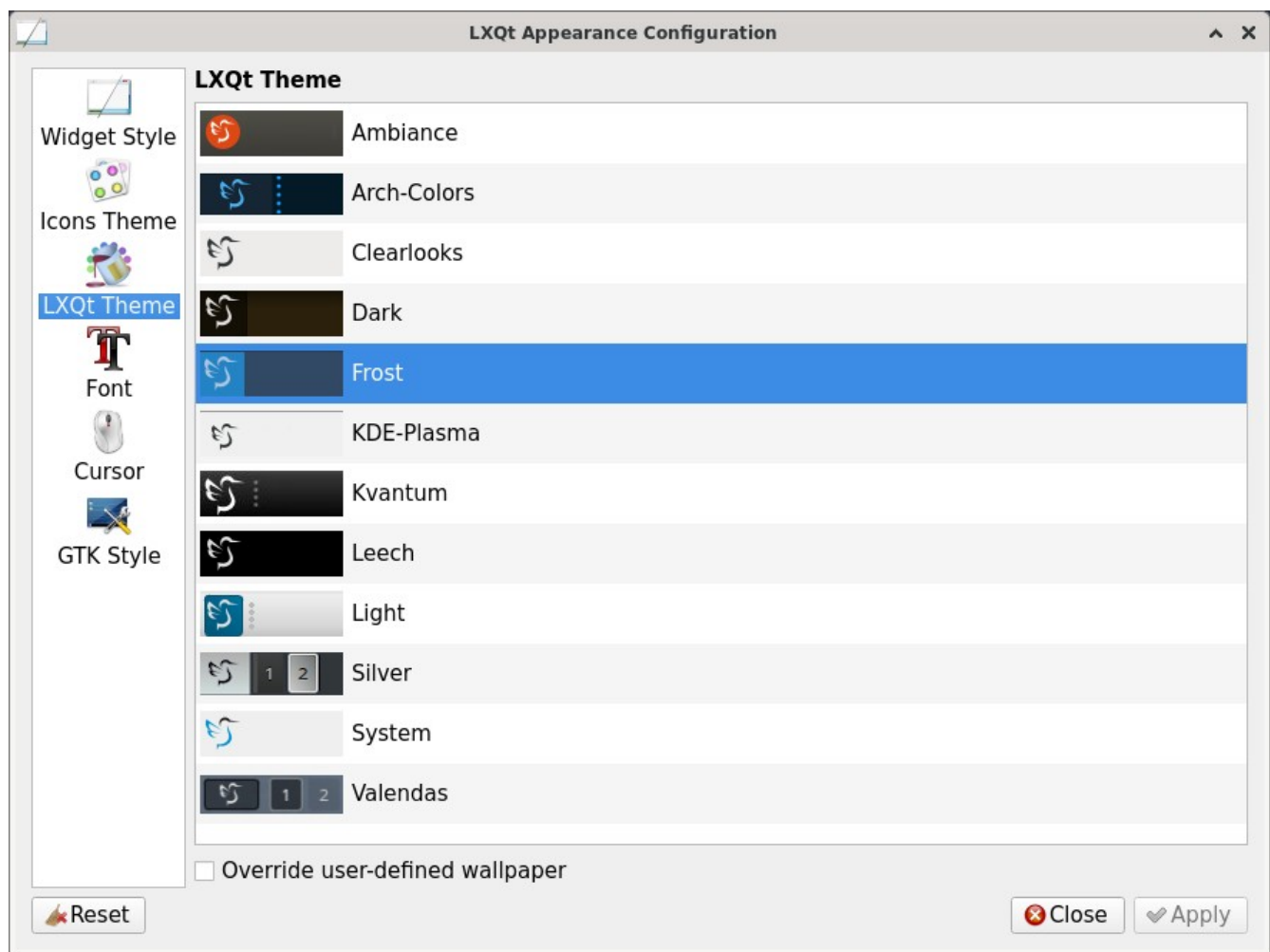


- As an option, of course, you can choose your own personal wallpaper. In that case, navigate to `/home/< yourusername >/Pictures`
- When you have chosen your desired wallpaper, click on the "Open" button
- Then, click on the "Apply" button
- Close the Desktop Preferences dialog window

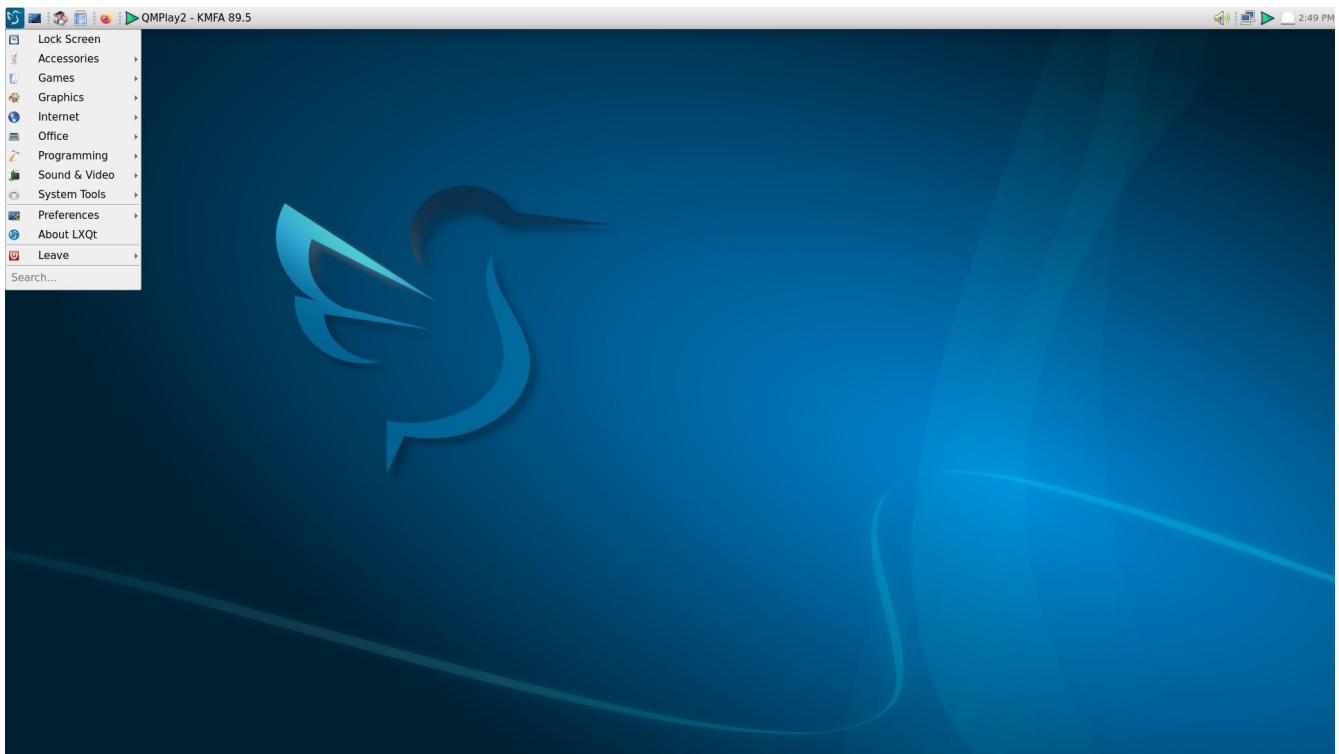
Change the Theme

Here are the bare-bones basics. (If you wish, it is possible to make extensive changes with your theming -- including the download of different icon sets, themes, etc. I have not used LXQt long enough to become a "theming guru"; I have been happy to use the stock / default themes).

- From the main menu, go to Preferences > LXQt Settings > Appearance.
- A dialog window will open. In the left panel, click on "LXQt Theme"
- You will see a list of the default choices that are available:



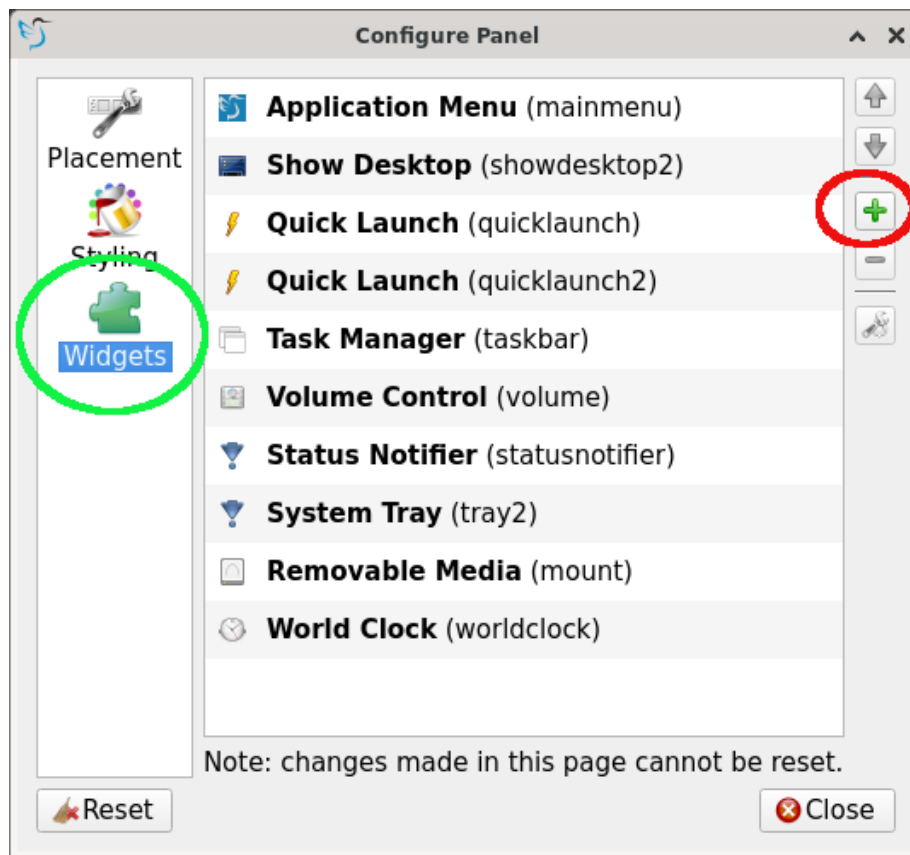
- Below is a screenshot with the "Light" theme applied:



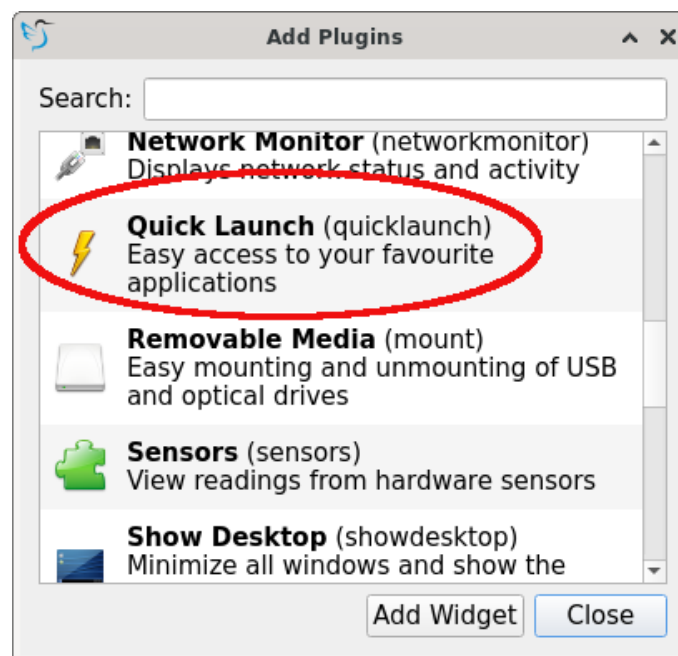
Add Quick Launchers to the Top Panel / Taskbar

On the left side of the top panel, you will notice an area that says "Drop application icons here"

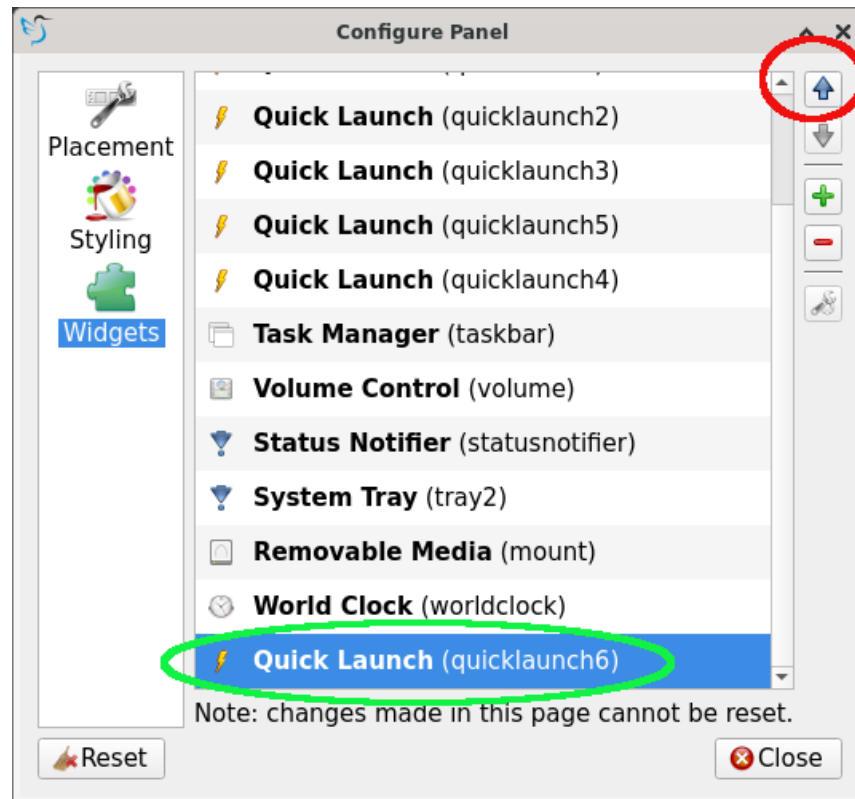
- You can drag-and-drop any application here, to create a quick launcher
 - For example, I immediately dropped the Firefox icon from the menu, into this area
- You can only use this 'pre-designated drop zone' once. Afterwards, to add a quick launcher, you must do the following:
- Right-click in an empty area of the top panel
- Choose the option "Manage Widgets"
- A dialog window will open. In the left panel, click on "Widgets"
- Next, click on the " + " [plus] icon:



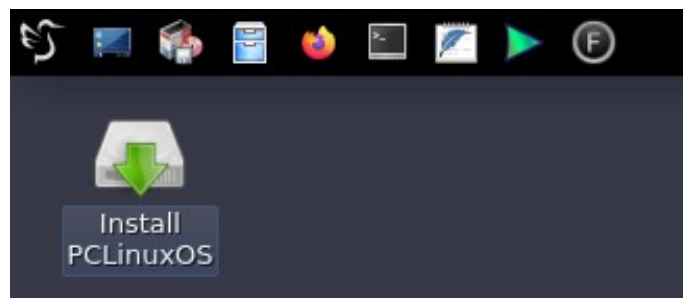
- Another dialog window will open. Scroll down and click on "Quick Launch" to select it.
- Then, click on the "Add Widget" button:



- An 'empty' launcher icon will be added to the far right side of the top panel / taskbar
- To change the location of that launcher area, right-click on the top panel and choose "Manage Widgets"
- In the "Configure Panel" dialog window, scroll down and select "Quick launch [number x]" at the bottom of the list
- Next, click on the " ↑ " [up arrow] several times in succession, to move it from the far right of the panel over to the left area:



- Finally, drag the application icon you wish to add there, and drop it into the designated launcher 'placeholder'
- Using this procedure, I added 5 quick launchers to the top panel: Firefox, QTerminal, FeatherPad, QMPlay2 and FocusWriter (as shown in the screenshot below):



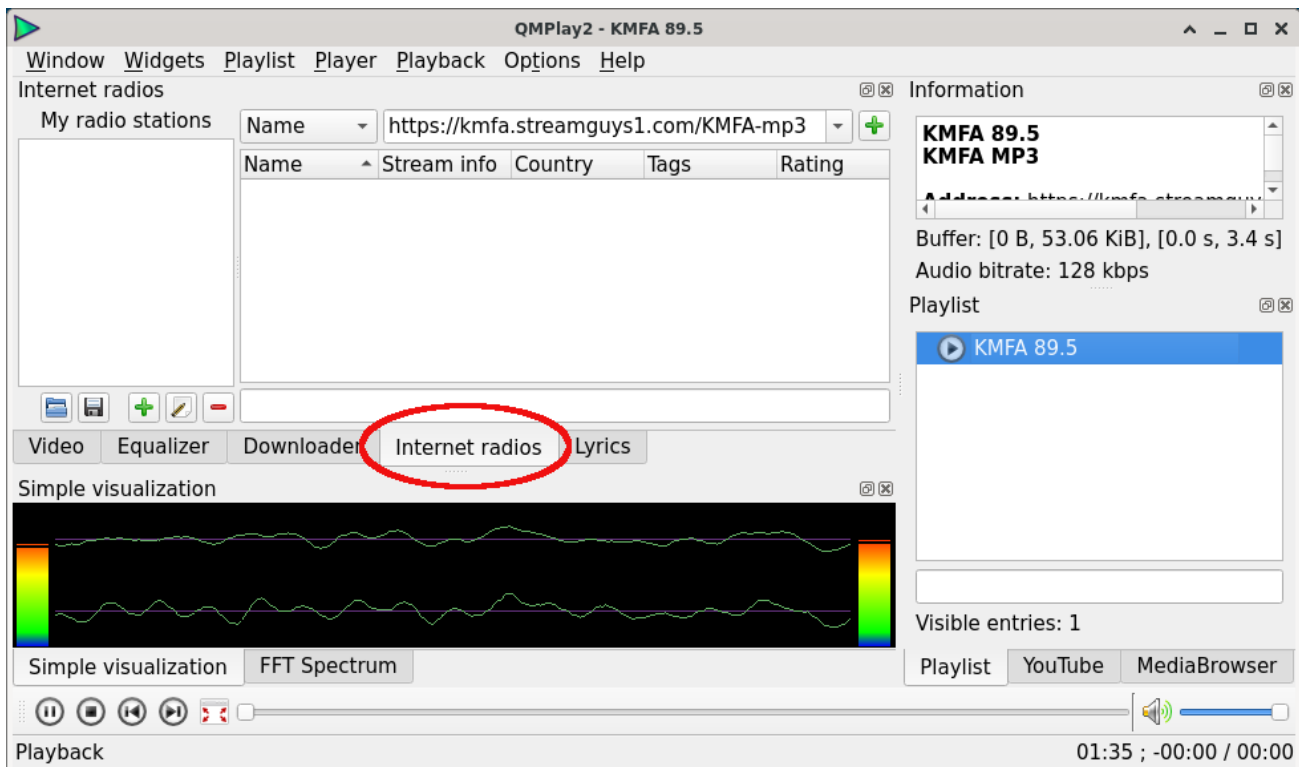
How to Exit FocusWriter

- The first time I opened FocusWriter, it immediately went into fullscreen mode and it took me a few minutes to figure out how to close it ...
- The F11 function key toggles between Fullscreen mode and Minimal (smaller) mode
- Or, you can type `Ctrl+Q` to close / quit the program
- *Note:* The `ESC` key does not produce any response. (It was the first thing that I tried)

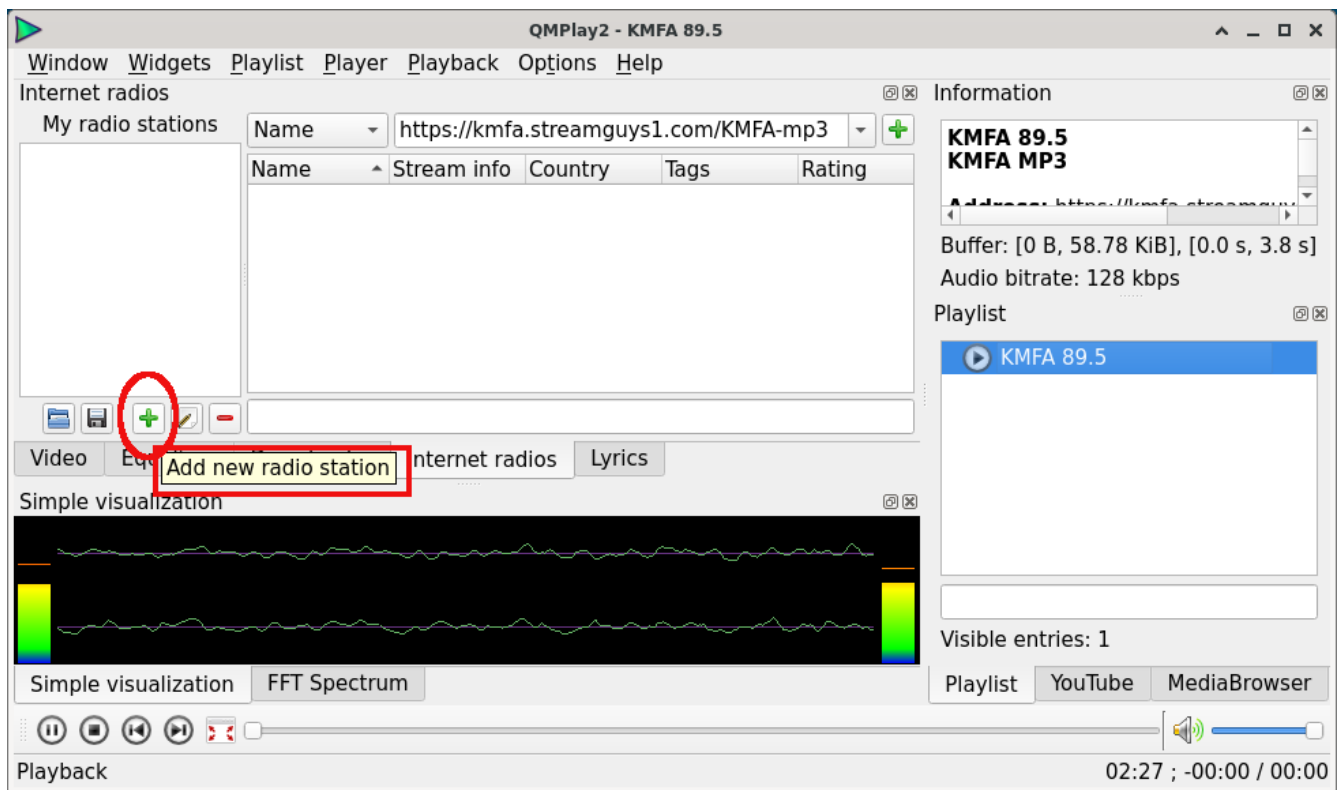
Play an Internet Radio Stream with QMPlay2

I often listen to internet radio streams while I'm working on the computer. Although I usually install VLC Media Player to do this, I decided to try QMPlay2 while I was running LXQt (since it came pre-installed). QMPlay2 worked well for this purpose.

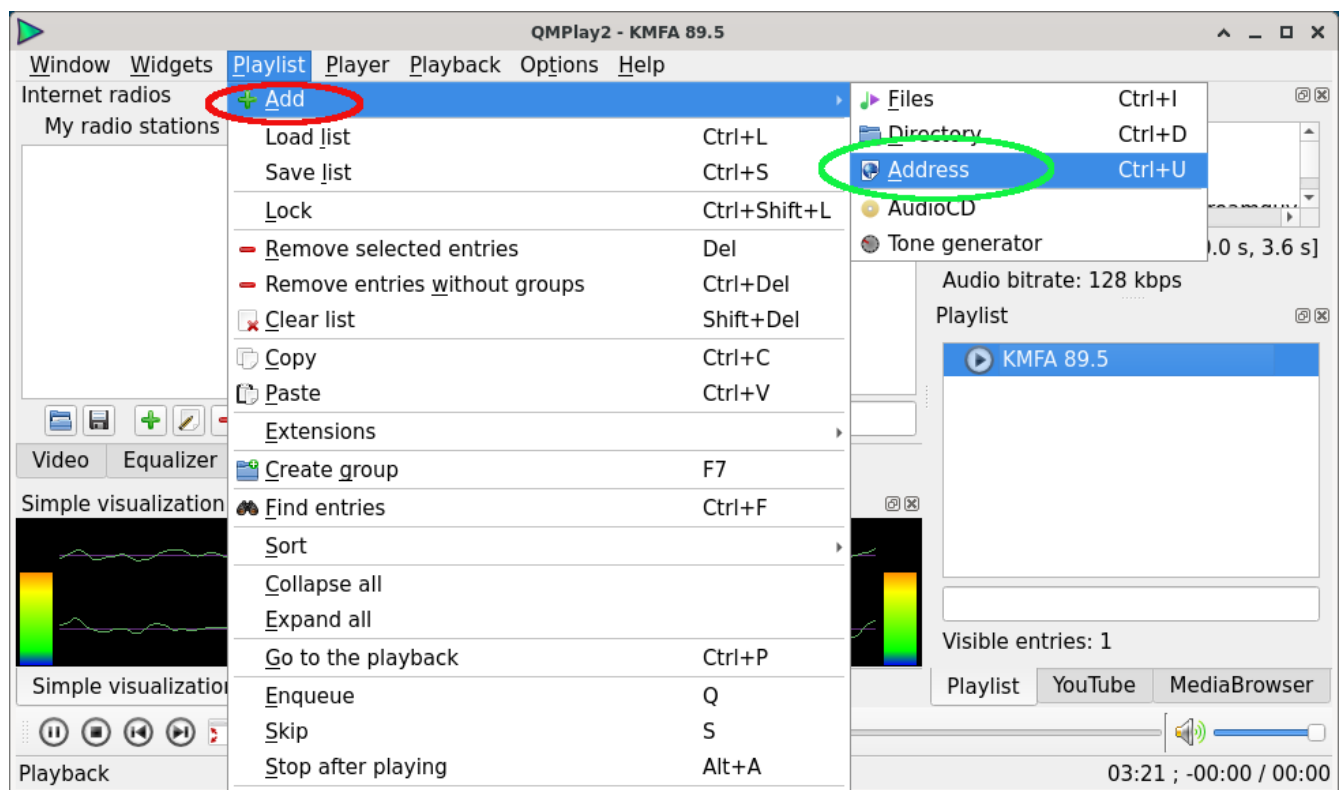
- To add a radio stream (.mp3 or other), do this:
- Open QMPlay2 and click on the "Internet radio" tabs to bring it forward:



- Click on the " + " [plus] button to add a new radio station:



- In the dialog window that opens, paste in the URL of your desired radio station
- Close the window and click on the "Play" button
- Or, you can also go to the Playlist menu > Add > Address:



- Then, paste in the URL of your desired radio station

If you like classical music, you might enjoy listening to these streams (two of my favorite stations):

<https://kmfa.streamguys1.com/KMFA-mp3>

(KMFA 89.5 FM [Austin, Texas])

WCPE 89.7 FM "The Classical Station" [North Carolina] has several different streams available (.aac and .mp3):

http://playerservices.streamtheworld.com/api/livestream-redirect/WCPE_FMAAC128.aac

http://playerservices.streamtheworld.com/api/livestream-redirect/WCPE_FM.mp3

I hope that you will find these tips helpful; maybe they will save you some time during your first adventure with the LXQt DE.