

# Bumble Bees of Saskatchewan



White-shouldered bumble bee  
(*Bombus appositus*)



Two-form bumble bee  
(*Bombus bifarius*)



Two-spotted bumble bee  
(*Bombus bimaculatus*)



Ashton cuckoo bumble bee  
(*Bombus bohemicus*)  
S1, tracked



Yellow head bumble bee  
(*Bombus flavifrons*)  
S5 Not tracked



Yellow head bumble bee 2  
(*Bombus flavifrons*)  
S5 Not tracked

Adapted from Bumble Bee Field Guide Bumble Bee Watch



Northern amber bumble bee  
(*Bombus borealis*)  
S5 Not tracked



Central bumble bee  
(*Bombus centralis*)  
S5 Not tracked



Cryptic bumble bee  
(*Bombus cryptarum*)  
SU, tracked



Yellow bumble bee  
(*Bombus fervidus*)  
S5 Not tracked



Yellow bumble bee 2  
(*Bombus fervidus*)  
S5 Not tracked



Frigid Bumble Bee  
(*Bombus frigidus*)  
S5 Not tracked



Fernald cuckoo bumble bee  
(*Bombus fernaldi*)  
S4 tracked



Brown-belted bumble bee  
(*Bombus griseocollis*)  
SU tracked

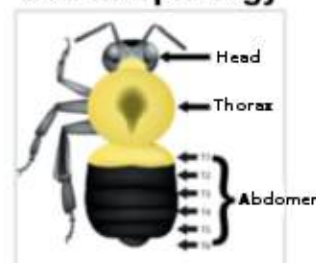


Hunt's bumble bee  
(*Bombus huntii*)  
S5 Not tracked



Common eastern bumble bee  
(*Bombus impatiens*)

## Bee Morphology



Adapted from Wildlife Preservation Canada

## Males and Females

Male bumble bees emerge later in the season and have some of the following characteristics:

1. Extra abdominal segment
2. Extra antenna segment
3. Thinner legs with no pollen baskets
4. Often longer / shaggier hair

Males are difficult to identify to species by color compared to females

## FEMALE MALE



Indiscriminate cuckoo bumble bee  
(*Bombus insularis*)  
S4 tracked



Black-tailed bumble bee  
(*Bombus melanopygus*)  
S5 Not tracked



Fuzzy-horned bumble bee  
(*Bombus mixtus*)  
S5 Not tracked



Nevada bumble bee  
(*Bombus nevadensis*)  
S5 Not tracked



Western bumble bee  
(*Bombus occidentalis*)  
S2, tracked



Confusing bumble bee  
(*Bombus perplexus*)  
S5 Not tracked



Red-belted bumble bee  
(*Bombus rufocinctus*)  
S5 Not tracked



Sanderson bumble bee  
(*Bombus sandersoni*)  
S5 Not tracked



Suckley cuckoo bumble bee  
(*Bombus suckleyi*)  
S1 tracked



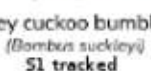
Forest bumble bee  
(*Bombus sylvicola*)  
S5 Not tracked



Tri-colored bumble bee  
(*Bombus ternarius*)  
S5 Not tracked



Yellow-banded bumble bee  
(*Bombus terricola*)  
S4, tracked



Half-black bumble bee  
(*Bombus vagans*)  
S5 Not tracked



Nearctic Bumble Bee  
(*Bombus vanacouverensis nearcticus*)  
S5 Not tracked

*B. vanacouverensis*  
ssp *Nearcticus*  
Polymorphic  
Varied coloration  
& stripe patterns.  
Yellow or white  
markings  
The red-tailed is  
" *B. bifarius* "