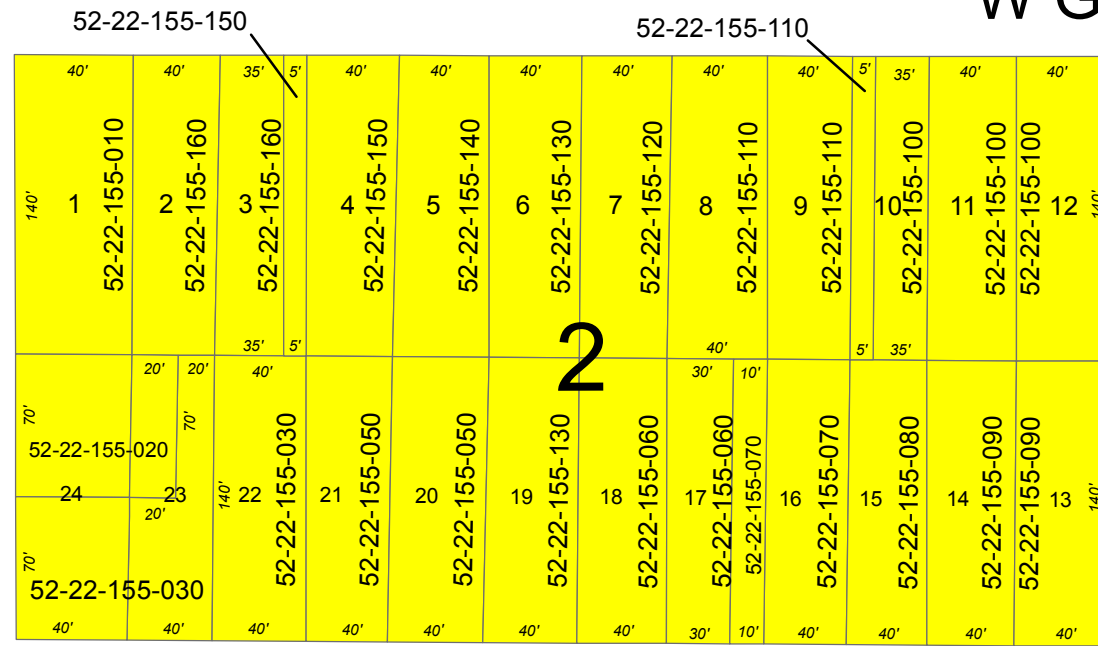
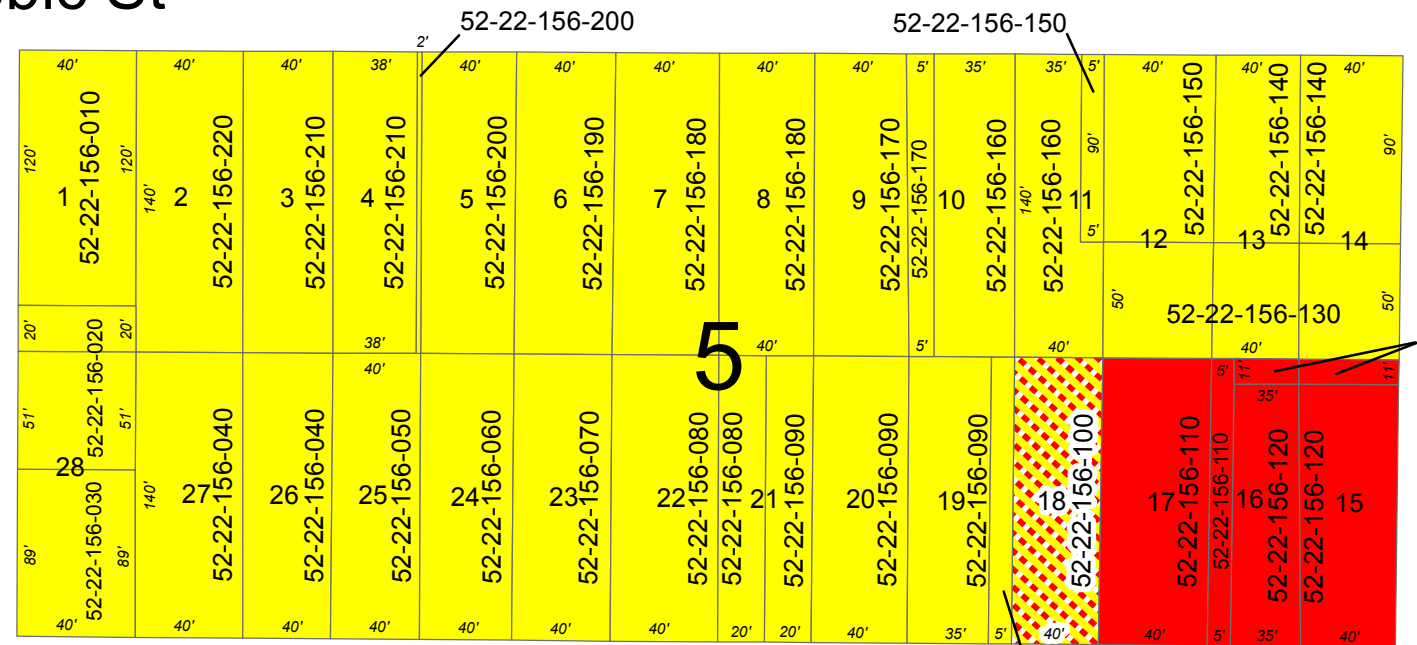


Case and Longyear Blocks 2-6

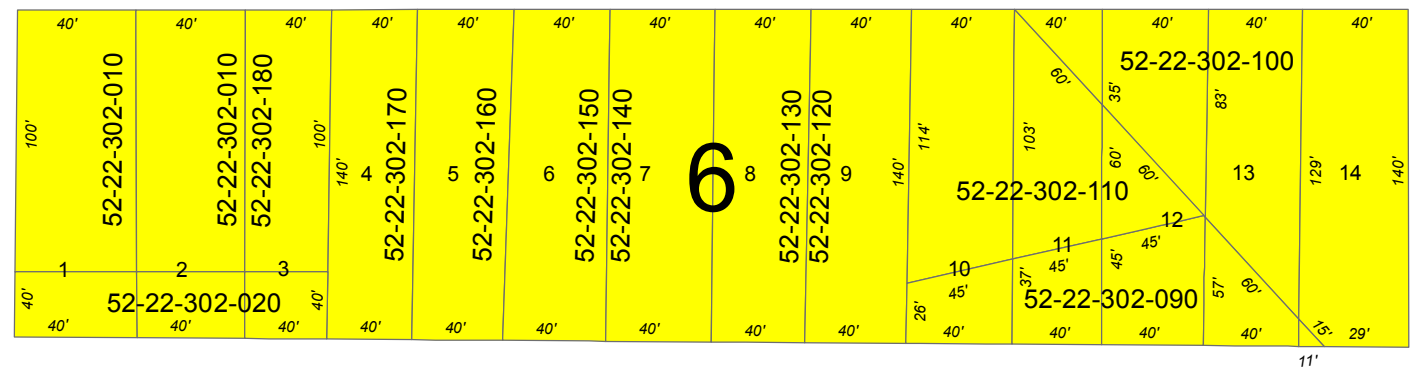
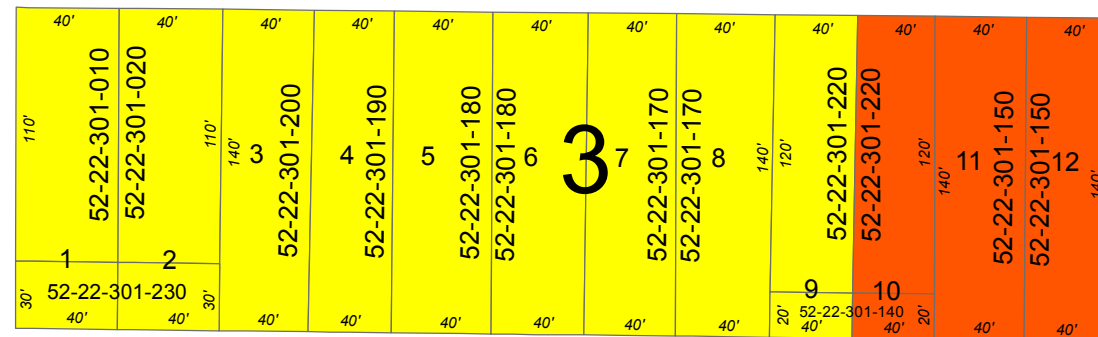
N Hemlock St



W Gogebic St

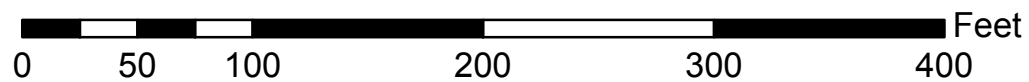
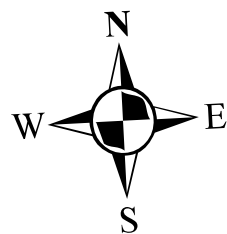


W Pewabic St



N Lowell St

N Lowell St



Zoning

- R-1 Single Family Residential
- C-2 Downtown Commercial
- C-1 Neighborhood Commercial
- R-1/C-1 Single Family Residential/Neighborhood Commercial