



IDENTITY LEATHER CRAFT

for people who make, mend or adapt things out of leather



Video tutorial from [Wrangler Star—U-tube—How to Make an Axe Sheath](#)

Making an Axe Head Sheath

Leather

[2-2.5mm veg tan shoulder](#) or [economy veg tan 2-2.8mm](#)— these leathers can be stamped and embossed

Alternatively use the [heavy weight stallion](#), or the heavy mellow leather (these are already dyed and won't need edge slicking)

Materials

5x [screwposts](#) to hold leather together (for thicker leather use 1290-)

1x [rapid rivet](#) to secure the strap

1 x Sam Browne button stud fastener for strap (or use [Line 20 press studs](#) and [setter](#))

[Mahogany Antique Gel](#) or [Identity Store Water-based leather stain Mahogany](#)

Useful Guides from The Identity Store:

[Guide to Setting Rivets and Press Studs](#)

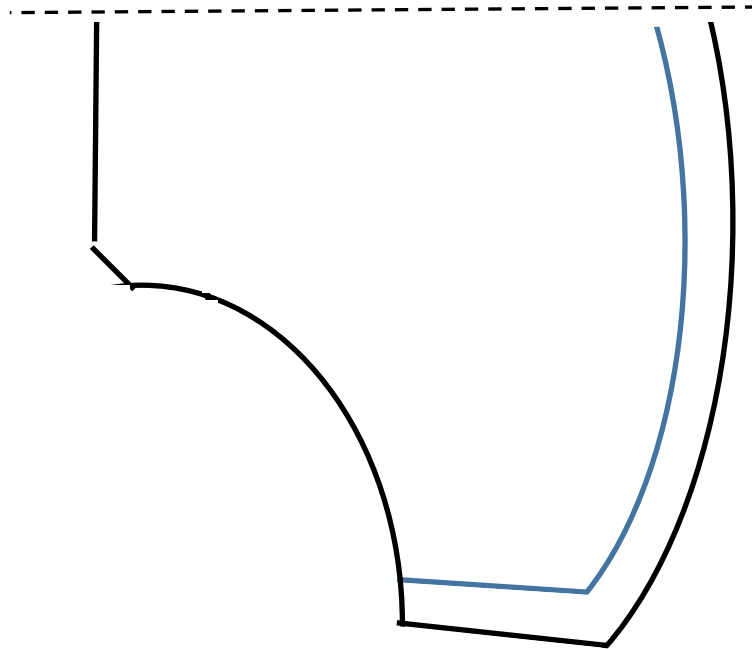
[Guide to getting a Professional Edge](#)

www.identityleathercraft.com

Axe Head Sheath— template shape

(Scale as required)

Fold line for template—
cut from
paper first



The blue line represent an inner welt for added protection and to allow for the thickness of the blade. Cut this thin band shape and glue in place.

Useful links:

The links below show some simple steps for making your axe head sheath – they can be stitched, riveted or held together with screwposts. We have included the latter option.

Basic : <https://www.youtube.com/watch?v=TpbS4BKF3sk>

More Advanced: <https://www.youtube.com/watch?v=Q6hHgTDMmGo>

Useful Link with idea for shape: <http://woodtrekker.blogspot.co.uk/2011/08/how-to-make-leather-axe-sheath.html>



www.theidentitystore.co.uk

The Identity Store Holt Lane Matlock Derbyshire DE4 3LY



Instructions:

1. Make up a paper template to the desired shape and fit for your axe head, bill-hook or tool.
2. Mark out the design on to a piece of thick, heavy duty leather.
3. Dampen the leather on the inside ('flesh' side) folded edge and press down to set a fold in place.
4. Mark out and make holes for the screw posts



5. Add a strong glue to the post threads and screw in place
6. Rivet the strap to the centre edge on the back of the sheath, then measure around the axe head for length and mark off where you will position the hole for the Sam Brown Button stud.
7. Make a hole for the stud in the sheath leather and screw in place with a dot of strong glue on the thread once again.
8. Make a hole and slit in the strap end for the Sam Browne to pass through.

Finally:

Dye if desired and rub with [Aussie Conditioner](#) or apply [Acrylic Resolene](#) to finish and protect the sheath and blade.

Useful Guides from The Identity Store:

[Guide to Setting Rivets and Press Studs](#)

[Guide to getting a Professional Edge](#)

www.identityleathercraft.com